



2022-2024 ENCLOSURE CATALOG NEW PRODUCT DIGEST

**7,800 new products have been added.
Please check them out!**



**CASE BOX RACK & CUSTOM
TAKACHI ELECTRONICS ENCLOSURE CO., LTD.**

IP68 HIGH PERFORMANCE

Outdoor Waterproof Box
for 5G Technology!

WG series



IP68

24-hour / 1m-depth

IP68 high performance waterproof enclosure.

Protected from immersion 24 hours at 1m depth.

Made of UV-resistant ASA material.

Wall mount bracket and pole mount bracket are available as optional parts.

6 Sizes



IP68 ENCLOSURE with VENT PLUG - WGV series

Catalog P5-10



6 Sizes

IP68 waterproof plastic enclosure with ventilation plug.

Equipped with the ventilation plug for enabling pressure equalization.

Ventilation plug protects the enclosure from deformation by equalizing pressure in environments where there are differences between strong daytime and low nighttime temperatures, as well as venting the gas generated within.



ECONOMICAL OUTDOOR BOX - OB series

Catalog P11-14

Cost efficient type rainproof outdoor network enclosure.

No rain entry by the seamless construction without gasket.

Made of UV-resistant ASA material.

Backside bracket equipped with pole mount slit & wall hanging hole.



3 Sizes

IoT SMALL PLASTIC CASE - SIC series

Catalog P25-28



Rounded design small plastic case ideal for use as IoT devices.

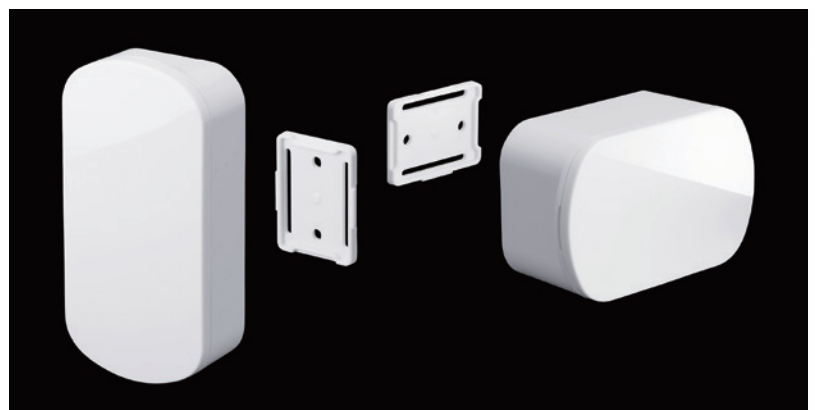
Easy assembly snap-in construction.

Despite the small size, the screwless construction provides ample internal space.

4 Sizes

WALL MOUNT IoT SMALL CASE - SIM series

Catalog P25-30



Rounded design wallmount small plastic case ideal for use as IoT devices.

Easily attached to, or detached from the wall by using the wall mounting bracket.

Made of UV-resistant ASA material.

4 Sizes

PORTABLE PLASTIC CASE - CSS • CS series

Catalog P81-90

1 SIZE ADDED

NEW SIZE



CR2450/CR2477 battery compartment model added to the CSS and CS series portable plastic cases.

Simple design case CS series and silicone cover type CSS series can be selected.

4 Battery types : CR2032 x 1, CR2032 x 2, CR2450 x 1/CR2477 x 1, and no battery compartment.

CSS series : 10 color variations / CS series : 2 color variations.

4 Sizes

IP67 KEY-FOB PLASTIC CASE - WC series

Catalog P49-56



IP67 portable plastic case made of double shot injection molded TPE Grip and ABS Body.

New AAA x 2 battery compartment model added.

Selectable from 3 types : CR2032, AAA x 2, and no battery compartment.

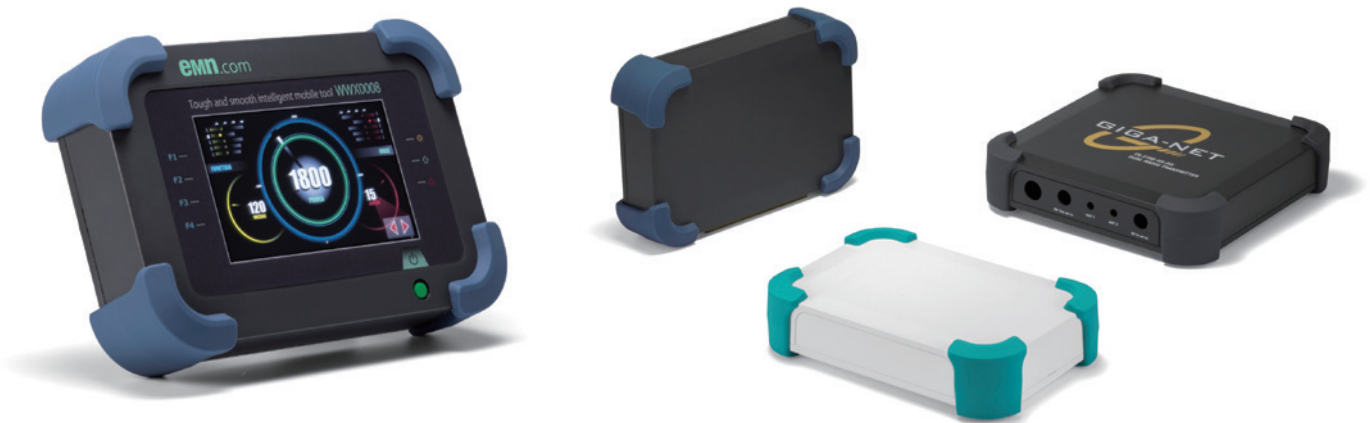
3 color variations : Black & Black, Black & Marine and White & Light gray.

1 SIZE ADDED

5 Sizes

SHOCKPROOF PLASTIC CASE - PFG series

Catalog P31-34



Rugged design plastic enclosure with silicone corner guards.

Application : Industrial tablet, Measuring equipment, Controller and Network device.

6 color combinations available with 3 corner guard colors.

5 Sizes

NETWORK PLASTIC BOX - PF series

Catalog P35-40

41 Sizes

5 SIZES ADDED

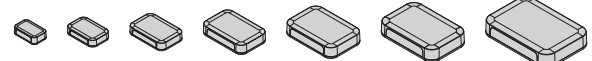


Flat designed plastic enclosure with detachable front/rear panels.

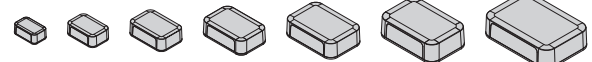
Five new sizes added, for a total of 41 size variations.

Made of ABS(UL94V-0) and available in Off-White and Dark Gray colors.

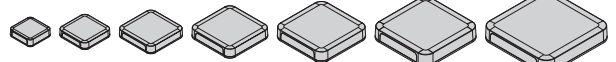
NEW



NEW



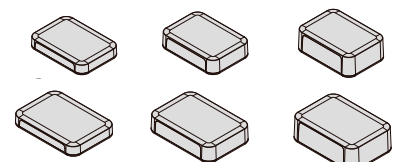
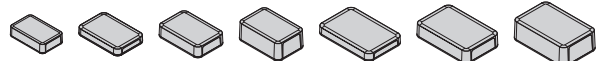
NEW



NEW



NEW





4 DISTINCT MODELS FOR DIFFERENT APPLICATIONS

Standard Model - AU series

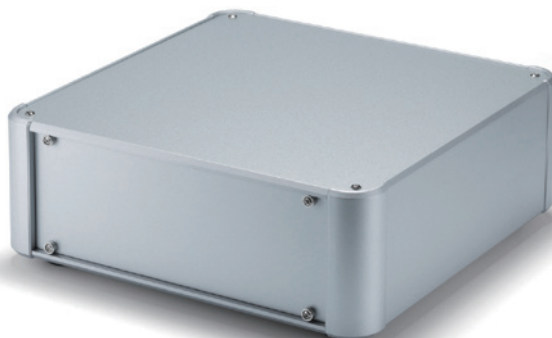
Standard model with front/rear sheet aluminium panels.



P151-154

Detachable Panel Model - AUP series

Easy maintenance with detachable front/rear panels.
An EMC shielded AUPE series is also available.



P155-162

Control Box Model - AUX series

Structure of extruded aluminium frames on 4 sides.

Suitable for control box use.

EMC shielded AUXE series is also available.



P163-170

Corner Guard Model AUG series

TPE Corner guard model.

An EMC shielded AUGS series is also available.



P171-178

PROVIDING VERSATILE ENCLOSURE SOLUTION

The aluminium case AU series has an assembly-type structure which allows it to be easily customizable. Both versatile and flexible, it is designed to be used as various devices from the classic audio amplifiers to next-gen IoT devices.

Select from a huge line-up of 117 different sizes based on your application type and ideas.

Measuring Equipment



Power Supply



Fiber Optic Transmitter



Industrial Embedded PC



IoT Gateway



Command Panel



Audio Amplifier



WALL MOUNT SUPPORT ARM - MAR series

Catalog P181-182

Wall mount support arm move easily to the preferred positions.

Suitable for mounting a touch panel controller on a machine.

Hole pitch of bracket is compatible with VESA standards.

3 Sizes



ALUMINIUM CASE with TILT LEG - EXPT series

Catalog P201-202



Aluminium enclosure with tilt leg for measurement instrument use.

Available in 16 different color combinations.

The tilt leg is non-slip design with elastomer (TPE) pad.

Tilt legs are also sold separately. See the TLW series on Page 222.

30 Sizes

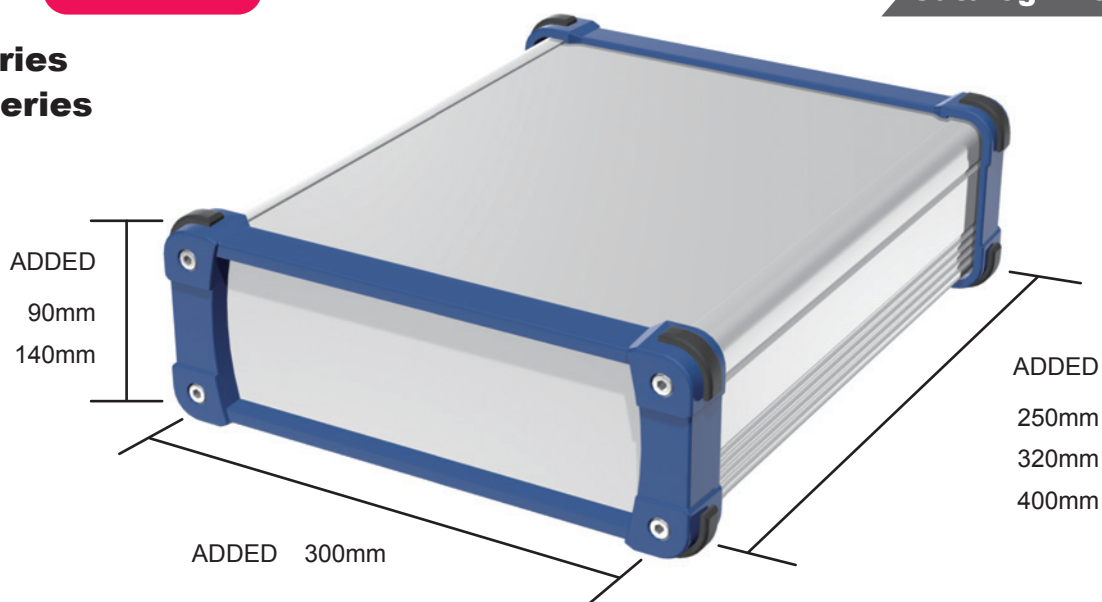
EXTRUDED ALUMINUM CASE - EX • EXP • EXPE • EXWF series

73 Sizes

6 SIZES ADDED

Catalog P203-216

EXP series
EXPE series



EX series



EXWF series



6 large sizes added - Extruded aluminum enclosure EX□ series.

Corner guard type - EXP series / EMC shielding type - EXPE series : P203 - 206

All aluminum type - EX series : P215 - 216

Waterproof flanged wallmount type - EXWF series : P213 - 214

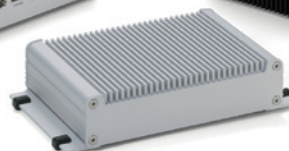
HEAT-SINK ENCLOSURE - EXH • EXHE • EXHF • EXHFE series

64 Sizes

6 SIZES ADDED

EMC TYPE ADDED

Catalog P239-254



Aluminum enclosure equipped with a highly efficient heat-sink top cover.

Added 6 large sizes and EMC shielding type, it became a huge line-up.

Heat-sink aluminium enclosure - EXH series : P243-244

EMC shielded heat-sink enclosure - EXHE series : P245-246

Flanged heat-sink aluminium enclosure - EXHF series : P247-248

EMC shielded flanged heat-sink enclosure - EXHFE series : P249-250

Raspberry Pi 4B HEAT-SINK CASE - RPH series

Catalog P129-138



Heat-sink top cover case exclusively for use with the Raspberry Pi 4 Model B.

Equipped with highly efficient heat-sink top cover.

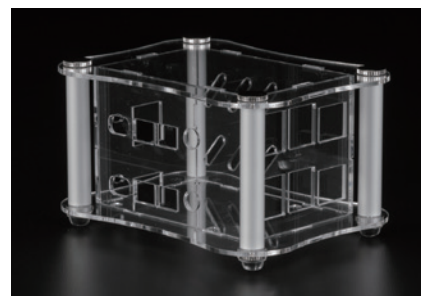
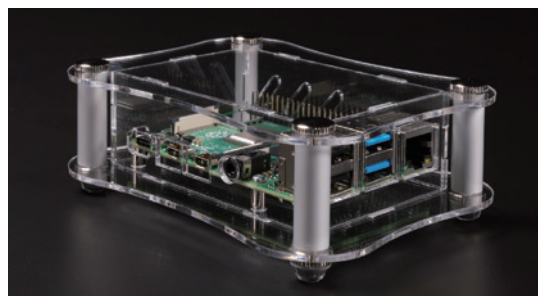
Constructed using diecast aluminium for strength and rigidity.

3 different Desktop, Flanged wall mount and DIN-rail mount types are available.

It is a high-performance case yet extremely affordable.

Raspberry Pi 4B ACRYLIC CASE - RPA series

Catalog P135-136



Curved transparent acrylic Raspberry Pi case with corner support columns.

You can enjoy a unique and luxurious design.

3 different Single desktop, Dual desktop and Single flanged types are available.

SKELETON ACRYLIC CASE - SKL series

Catalog P111-114



Curved transparent acrylic case with corner support columns.

Usable as a display enclosure for a unique and luxurious outlook.

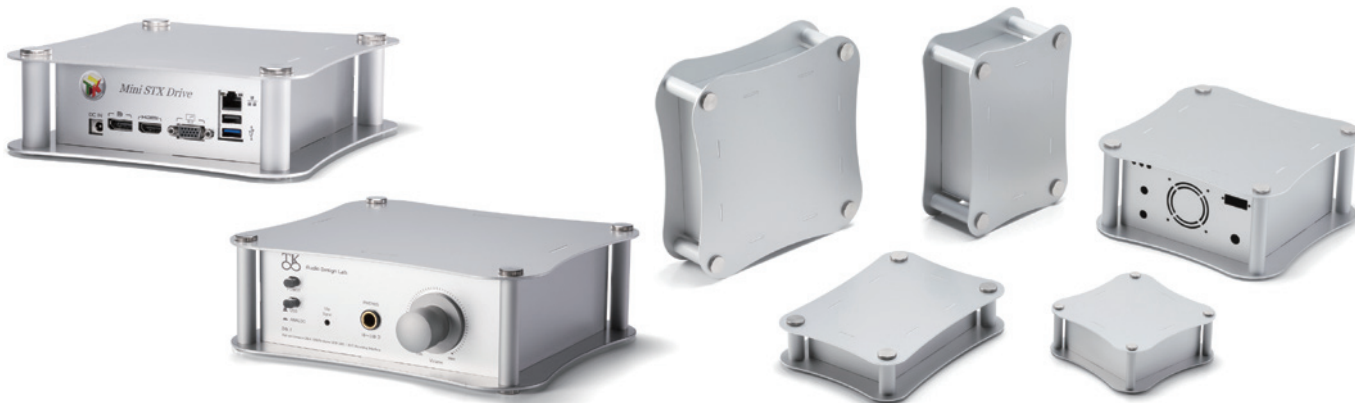
With a structure using extruded aluminum pillars, stronger than a normal acrylic case.

Knurled thumb screws for easy hand assembly.

6 Sizes

ARC DESIGN ENCLOSURE - ALR series

Catalog P145-148



Curved arc designed aluminium enclosure.

Elegant design with columns at the corners.

Suitable to be used for embedded computers, audio amplifiers and power supply enclosures.

6 Sizes

IP65 PLASTIC SWITCH BOX - BCSB series

Catalog P329-330



Waterproof plastic switch box with 1 ~ 4 $\Phi 22$ hole(s) on the top cover.

$\Phi 22$ knock-outs on 2 opposite ends for easy wiring access if required.

IP65 protection is maintained with waterproof switches and the exclusive cable glands installed.

4 Sizes

EMBEDDED BATTERY BOX - BC series

Catalog P125-128



Screw mount embedded battery box.

Suitable to be installed into enclosures with material thickness of 1.0mm to 3.5mm.

5 different battery layouts : AA x 2, AA x 3, AA x 4, AAA x 2 and AAA x 4.

With lead-wire and without lead-wire can be selected.

FIBER OPTIC PORT DUSTPROOF PLUG

Catalog P344



Fiber optic port dustproof plug.

Suitable for the three types of connector slots : SFP, QSFP, and CXP.

USB CONNECTOR DUSTPROOF COVER / CAP

Catalog P341-342



Two types of covers for female connectors added.

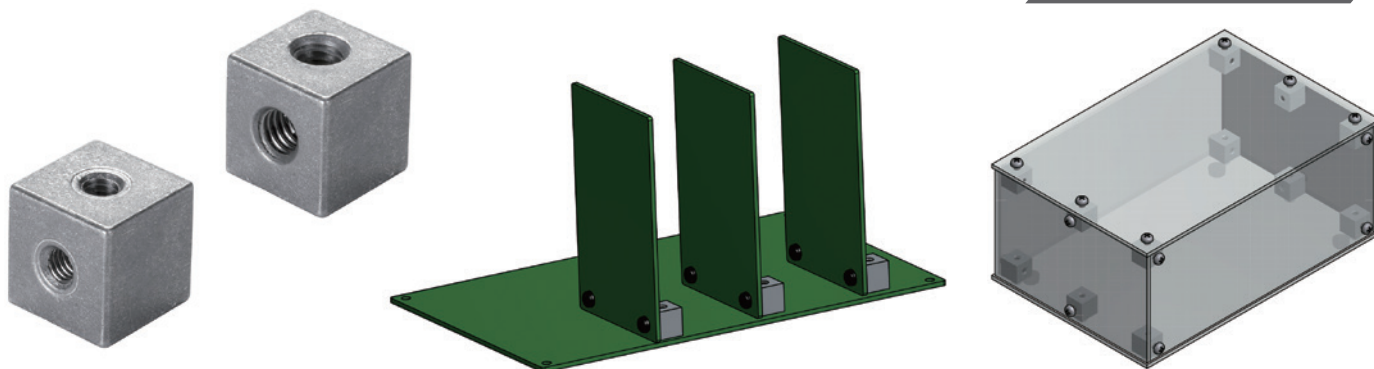
For USB type C : USB-C-3C

For USB3.0 Micro B : USB3C-21

Added male connector for USB type C : USB3C-3

CUBE STANDOFF - CUBE series

Catalog P120



10 threaded cube shape standoff with a thread on 4 faces.

M3 and M4 thread models available.

Conveniently usable when installing PCB or metal plate upright.

ADHESIVE STANDOFF - AST series

Catalog P121



Quick and easy installation adhesive standoffs.

Steel nut is installed, it has sufficient thread strength.

Convenient for installing PCBs into enclosures without the need for customization.

M2.3 • M2.6 • M3 thread and 5~20mm length are available.



8 Sizes

TAPPING STANDOFF - TPS series

Catalog P122

M4 SIZE ADDED



Female standoff with tapping screw.

Tapping screw head allows for easy installation onto existing enclosure boss mount.

M2.3 • M2.6 • M3 thread and 4~12mm length are available.



TAKACHI ELECTRONICS ENCLOSURE CO., LTD.

www.takachi-enclosure.com

3-21-16, Higashi-ryoke, Kawaguchi,
Saitama, JAPAN 332-0003

TEL. +81-48-222-5409

sales@takachi-el.co.jp

