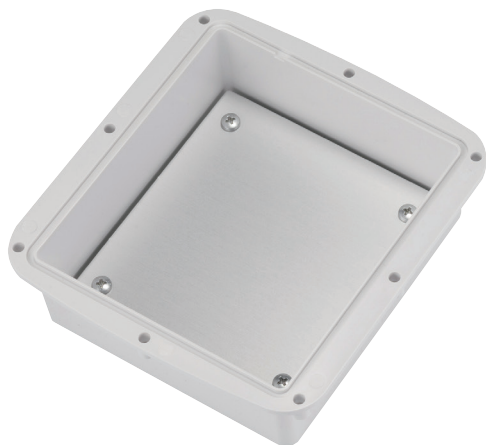
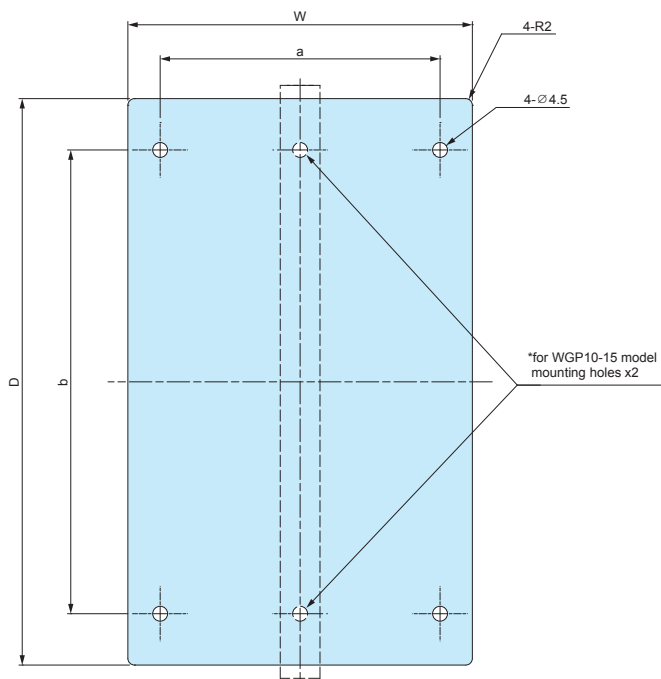


**WGP** series

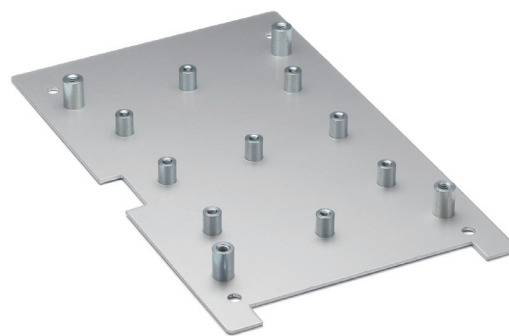
**MOUNTING PLATE for WG • WGV**



**WGP dimensions**



■ DXF/DWG/PDF/STP drawings available on our website.



■ Hole milling, clinching spacer customizations are available. See page Custom-7 ~ Custom-10 and our website for more details.

■ Material / Finish : A1100P (t=1.5mm) / Silver anodized

**Product no. / Details**

■ Mounting screws included.

Product no.	W	D	a	b	Suitable models	Weight (g)
WGP10-15	60	112	-	97	WG • WGV10-15-6, WG • WGV10-15- 8	30
WGP15-16	105	117	84.5	90	WG • WGV15-16-6, WG • WGV15-16- 8	54
WGP15-21	104	171	84.5	140	WG • WGV15-21-6, WG • WGV15-21- 9	76
<b>NEW</b> WGP17-25	120	200	100	176	WG • WGV17-25-8, WG • WGV17-25-11	100
<b>NEW</b> WGP23-25	175	185	152	168	WG • WGV23-25-8, WG • WGV23-25-11	133

**MT4-8T**

**PCB MOUNTING SCREW**

■ Self-tapping screws for board mounting on bosses inside WG and WGV series enclosures.



**Product no. / Details**

Product no.	Material	Finish	Pack of
MT4-8T (Bind tapping M4-8)	Steel	Trivalent chromate	20