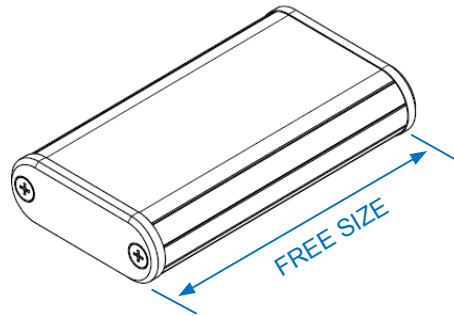
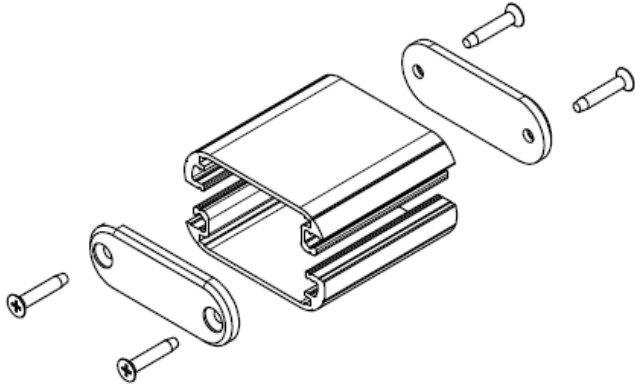


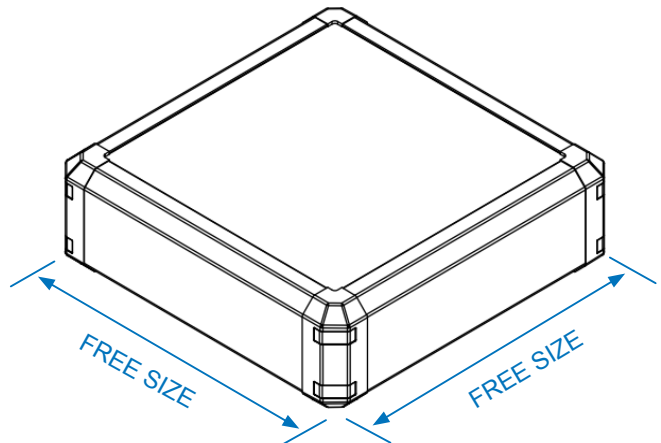
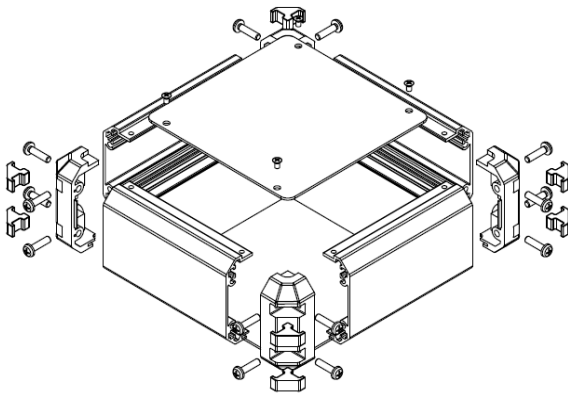
VARIETY OF CUSTOM SIZED ENCLOSURES

Extruded models are adjustable in extrusion length (depth) in 0.1mm or 1.0mm intervals.
Sheet-metal models are adjustable in W/D/H dimensions in 1.0mm intervals.

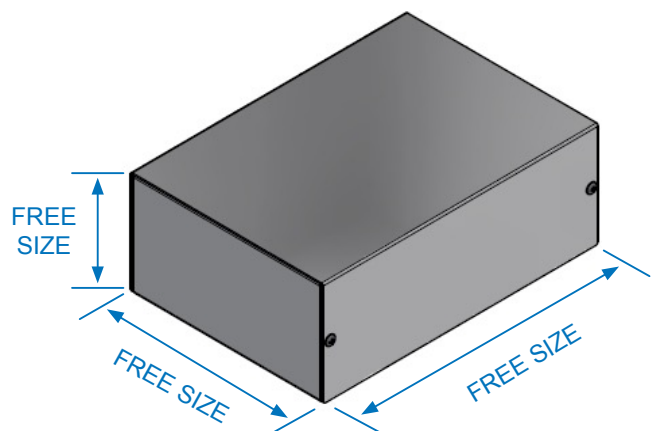
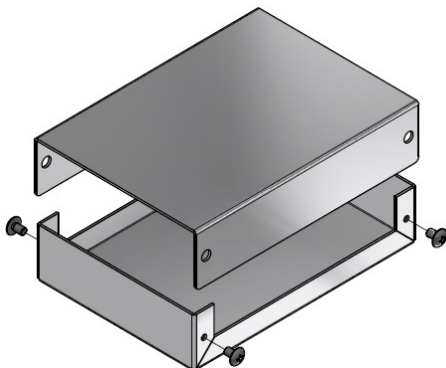
EXTRUDED ALUMINIUM MODEL



4 SIDE-EXTRUDED ALUMINIUM MODEL



SHEET METAL MODEL



More custom sized models are available.

https://www.takachi-enclosure.com/cat/flexible_size

INQUIRING CUSTOM SIZED ENCLOSURES

- 1 Navigate to the free-size product page you wish to inquire on our website and click on the button indicated by the → arrow.



Custom sized shock-proof design instrument enclosure.
Corner guards are designed to be both aesthetically pleasing, and impact resistant.

Selectable 22 different Width/Height profiles and specified length (depth) from 40 to 500mm in 1mm intervals.
16 different color combinations can be specified.

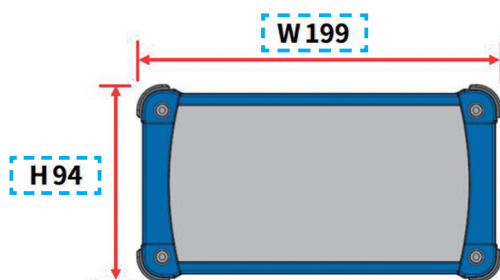


CUSTOM SIZE WEB QUOTATION	3D View - Silver/Navy	3D View - 16 color types
3D View - With tilt legs	Exploded view	Color code

■ If there is no "WEB QUOTATION" click button, please send us your inquiry from the "INQUIRY FORM" on the CONTACT tab on our website.

- 2 Go to the CUSTOM SIZE WEB QUOTATION page and enter your preferred dimensions.

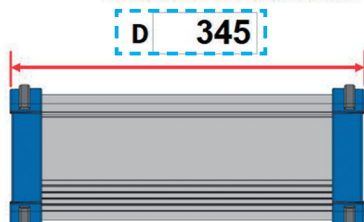
STEP1 Select required width / height.



Select	W	H	Select	W	H
<input type="checkbox"/>	69	34	<input type="checkbox"/>	151	81
<input type="checkbox"/>	69	44	<input type="checkbox"/>	151	101
<input type="checkbox"/>	69	59	<input type="checkbox"/>	199	56
<input type="checkbox"/>	89	39	<input type="checkbox"/>	199	74
<input type="checkbox"/>	89	49	<input checked="" type="checkbox"/>	199	94
<input type="checkbox"/>	89	64	<input type="checkbox"/>	199	119
<input type="checkbox"/>	116	41	<input type="checkbox"/>	244	64
<input type="checkbox"/>	116	56	<input type="checkbox"/>	244	89
<input type="checkbox"/>	116	71	<input type="checkbox"/>	244	114
<input type="checkbox"/>	151	46	<input type="checkbox"/>	300	90
<input type="checkbox"/>	151	61	<input type="checkbox"/>	300	140

STEP2 Specify size D(depth) ... Enter dimensions in 1mm intervals.

Available from 40 to 500mm



*NOTE: Specified size D(depth) ≠ available internal dimension

Available internal dimension = **D dimension - 20mm**

Please take caution when calculating required D dimension.

- 3 After entering the quantity, click on the button indicated by the → arrow to generate a Product No.

STEP4 **Quantity** ※Quantity can be specified up to 5 slots.

10 pcs

▶Add quantity



▶ **GENERATE PRODUCT NO.**

Product No. **EXPS199 – 94 – 345SN** ※Please use this model number when ordering.

- 4 After entering your details and the message in our INQUIRY FORM, click on the CONFIRM button.

STEP5 **INQUIRY FORM**

Fill out the inquiry form and send it. We will give you quotation by Email.
Inquiry from the country where the distributor is located will be answered by the distributor.

Fields marked with ★ are required

Product No. **EXPS199-94-345SN** Quantity ★ 10

E-mail ★ jiro@takachi-el.co.jp

Company ★ TAKACHI ELECTRONICS ENCLOSURE CO., LTD.

Your name ★ ☐ Mr. ☒ Ms. First name Jiro Last name Takachi

Country ★

Message
I would like a quote for 10 pieces of EXPS199-94-345SN.

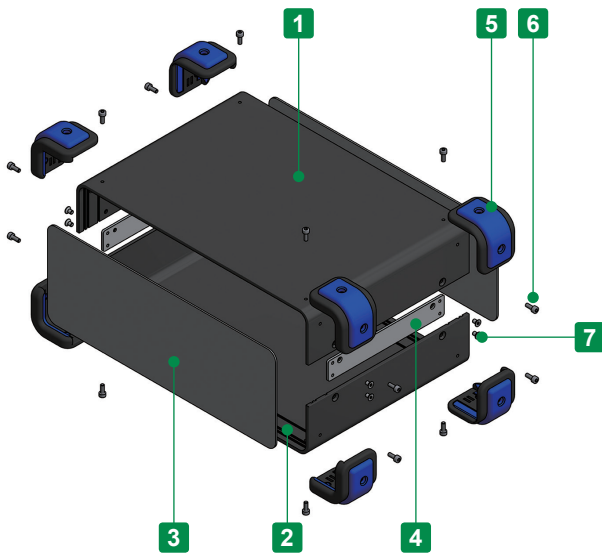
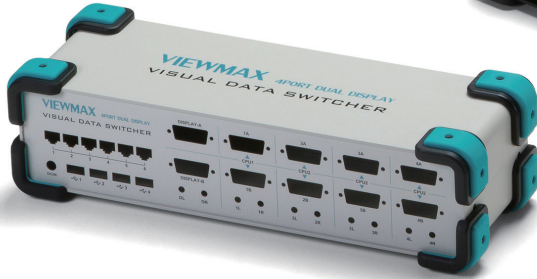


▶ **CONFIRM**

Our privacy policy have been designed to ensure that personal information is not misused or used for purposes other than it is intended for.
[PRIVACY POLICY](#)

- 5 A TAKACHI sales representative will get in touch with you with a quote via e-mail.





- Custom sized aluminium case with shockproof and anti-slip corner guards.
- Adjustable width from 100 to 450mm, and height from 80mm to 400mm in 1mm intervals.
- Selectable in 11 different depth variations, ranging from 100 to 340mm.
- 15 color types available with new SILVER case variations; 5 corner guard colors, and 3 case colors.
- G (Light gray) color type is slated to be discontinued in 2025.
- Standard size UCG series is also available.
See UCG series product page for more information.

Accessories (Optional parts)



Custom Sized Mounting Plate
UCSC series
See UCSC pages



Elastomer handle FM200 series
See page FM200 • MH-1

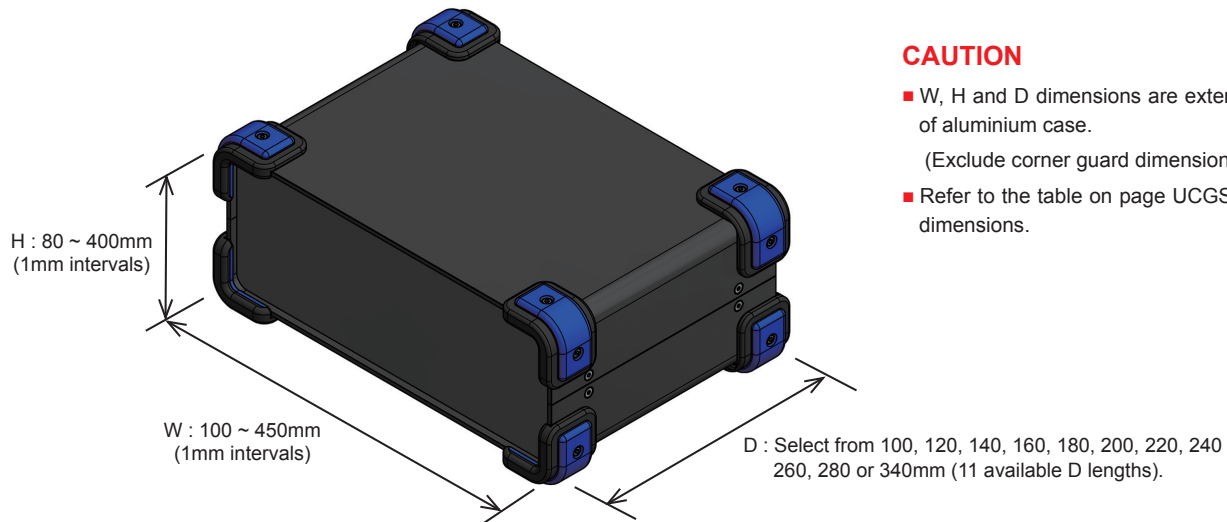
Components

No.	Part name	Pcs	Material	Color / Finish
1	Top cover	1	Extruded aluminium A6063S-T5	Black • Light gray • Metallic silver / Painted
2	Bottom cover	1	Extruded aluminium A6063S-T5	Black • Light gray • Metallic silver / Painted
3	Panel	2	Aluminium A1100P t=1.5	Black • Light gray / Painted Metallic silver / Painted (Conductive inside)
4	Joint plate	2	Steel SPCC t=2.0	Trivalent chromate
5	Corner guard	8	PP + Silicone	Black • Gray • Navy • Emerald • Red
6	Corner guard screw (Hexagonal M3-8)	16	Steel	Black trivalent chromate
7	Case screw (Hexagonal M3 flat head)	12	Steel	Black trivalent chromate

■ 2 Hexagonal wrenches included. (Large type : corner guard screws • Small type : case screws)

1 Dimensions

To select W and H dimensions in 1mm intervals, and select D length from the list below.



CAUTION

- W, H and D dimensions are external dimensions of aluminium case.
(Exclude corner guard dimensions)
- Refer to the table on page UCGS-3 for available dimensions.

2 Color

To select color code from the table below.

Code	B B Black / Black	B G Black / Gray	B N Black / Navy	B E Black / Emerald	B R Black / Red
Color					
Code	G B Light gray / Black	G G Light gray / Gray	G N Light gray / Navy	G E Light gray / Emerald	G R Light gray / Red
Color					
Code	NEW S B Silver / Black	NEW S G Silver / Gray	NEW S N Silver / Navy	NEW S E Silver / Emerald	NEW S R Silver / Red
Color					

Product No.

To determine a product number, fill W, H, D and select Color code in the following blank boxes.

Product no. UCGS - -

W H D Color code

Numbering example: W:222 x H:122 x D:280 and GE color code → **UCGS222-122-280GE**

Refer to the chart on page UCGS-3 for available sizes.

Lead Time

Custom Size Only
Custom Size + Hole Milling

9 business days (1 ~ 3 pcs)
12 business days (1 ~ 3 pcs)

Order Inquiry

For more information, contact us here at sales@takachi-el.co.jp

UCGS Size Chart

Refer to the table below for available sizes.

CAUTION

*D = 100mm : W dimension is limited to a maximum of 200mm.

*D = 120mm and 140mm : W dimension is limited to a maximum of 250mm.

*Max H dimension : W dimension * 1.5, up to a maximum of 400mm.

*Corner radius : D lengths of 100, 120 and 140 = R5 • Other D lengths = R8

■ [—] sizes are not available.

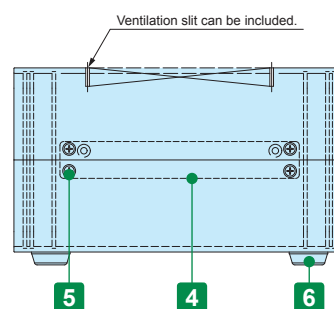
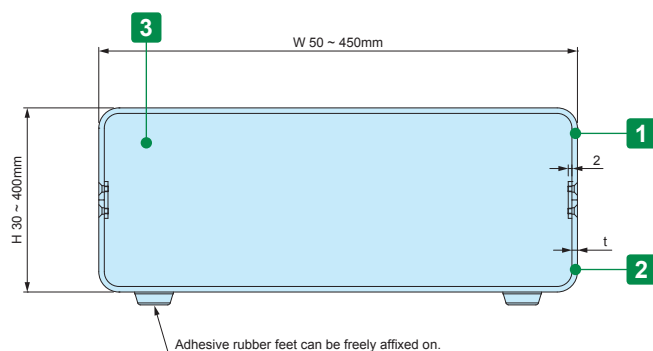
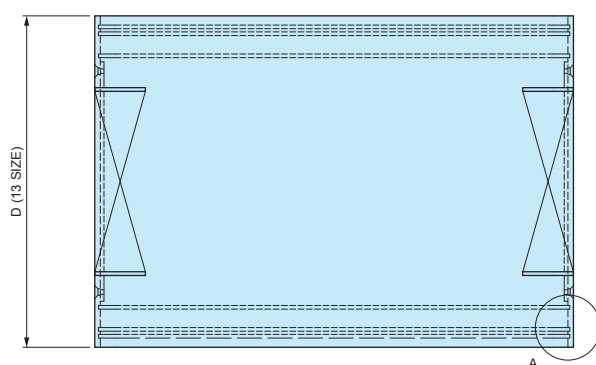
D	W \ H	80 ~ 100	101 ~ 125	126 ~ 150	151 ~ 175	176 ~ 200	201 ~ 225	226 ~ 250	251 ~ 275	276 ~ 300	301 ~ 325	326 ~ 350	351 ~ 375	376 ~ 400
100	100 ~ 150	○	○	○	○	○	○	—	—	—	—	—	—	—
	151 ~ 200	○	○	○	○	○	○	○	○	○	—	—	—	—
120	100 ~ 150	○	○	○	○	○	○	—	—	—	—	—	—	—
	151 ~ 200	○	○	○	○	○	○	○	○	○	—	—	—	—
	201 ~ 250	○	○	○	○	○	○	○	○	○	○	○	○	—
140	100 ~ 150	○	○	○	○	○	○	—	—	—	—	—	—	—
	151 ~ 200	○	○	○	○	○	○	○	○	○	—	—	—	—
	201 ~ 250	○	○	○	○	○	○	○	○	○	○	○	○	—
160	100 ~ 150	○	○	○	○	○	○	—	—	—	—	—	—	—
	151 ~ 200	○	○	○	○	○	○	○	○	○	—	—	—	—
	201 ~ 250	○	○	○	○	○	○	○	○	○	○	○	○	—
	251 ~ 300	○	○	○	○	○	○	○	○	○	○	○	○	○
	301 ~ 350	○	○	○	○	○	○	○	○	○	○	○	○	○
	351 ~ 400	○	○	○	○	○	○	○	○	○	○	○	○	○
180	100 ~ 150	○	○	○	○	○	○	—	—	—	—	—	—	—
	151 ~ 200	○	○	○	○	○	○	○	○	○	—	—	—	—
	201 ~ 250	○	○	○	○	○	○	○	○	○	○	○	○	—
	251 ~ 300	○	○	○	○	○	○	○	○	○	○	○	○	○
	301 ~ 350	○	○	○	○	○	○	○	○	○	○	○	○	○
	351 ~ 400	○	○	○	○	○	○	○	○	○	○	○	○	○
200	100 ~ 150	○	○	○	○	○	○	—	—	—	—	—	—	—
	151 ~ 200	○	○	○	○	○	○	○	○	○	—	—	—	—
	201 ~ 250	○	○	○	○	○	○	○	○	○	○	○	○	—
	251 ~ 300	○	○	○	○	○	○	○	○	○	○	○	○	○
	301 ~ 350	○	○	○	○	○	○	○	○	○	○	○	○	○
	351 ~ 400	○	○	○	○	○	○	○	○	○	○	○	○	○
220	100 ~ 150	○	○	○	○	○	○	—	—	—	—	—	—	—
	151 ~ 200	○	○	○	○	○	○	○	○	○	—	—	—	—
	201 ~ 250	○	○	○	○	○	○	○	○	○	○	○	○	—
	251 ~ 300	○	○	○	○	○	○	○	○	○	○	○	○	○
	301 ~ 350	○	○	○	○	○	○	○	○	○	○	○	○	○
	351 ~ 400	○	○	○	○	○	○	○	○	○	○	○	○	○
240	100 ~ 150	○	○	○	○	○	○	—	—	—	—	—	—	—
	151 ~ 200	○	○	○	○	○	○	○	○	○	—	—	—	—
	201 ~ 250	○	○	○	○	○	○	○	○	○	○	○	○	—
	251 ~ 300	○	○	○	○	○	○	○	○	○	○	○	○	○
	301 ~ 350	○	○	○	○	○	○	○	○	○	○	○	○	○
	351 ~ 400	○	○	○	○	○	○	○	○	○	○	○	○	○
260	100 ~ 150	○	○	○	○	○	○	—	—	—	—	—	—	—
	151 ~ 200	○	○	○	○	○	○	○	○	○	—	—	—	—
	201 ~ 250	○	○	○	○	○	○	○	○	○	○	○	○	—
	251 ~ 300	○	○	○	○	○	○	○	○	○	○	○	○	○
	301 ~ 350	○	○	○	○	○	○	○	○	○	○	○	○	○
	351 ~ 400	○	○	○	○	○	○	○	○	○	○	○	○	○
280	100 ~ 150	○	○	○	○	○	○	—	—	—	—	—	—	—
	151 ~ 200	○	○	○	○	○	○	○	○	○	—	—	—	—
	201 ~ 250	○	○	○	○	○	○	○	○	○	○	○	○	—
	251 ~ 300	○	○	○	○	○	○	○	○	○	○	○	○	○
	301 ~ 350	○	○	○	○	○	○	○	○	○	○	○	○	○
	351 ~ 400	○	○	○	○	○	○	○	○	○	○	○	○	○
340	100 ~ 150	○	○	○	○	○	○	—	—	—	—	—	—	—
	151 ~ 200	○	○	○	○	○	○	○	○	○	—	—	—	—
	201 ~ 250	○	○	○	○	○	○	○	○	○	○	○	○	—
	251 ~ 300	○	○	○	○	○	○	○	○	○	○	○	○	○
	301 ~ 350	○	○	○	○	○	○	○	○	○	○	○	○	○
	351 ~ 400	○	○	○	○	○	○	○	○	○	○	○	○	○



- Custom sized case with extruded aluminium covers for rigidity and toughness.
Adjustable width from 50 to 450mm, and height from 30mm to 400mm in 1mm intervals.
- Selectable in 13 different depth variations, ranging from 60 to 340mm.
- 7 different color types available with new SILVER case variations. G (Light gray) color type is slated to be discontinued in 2025.

UCS dimensions ■ DXF/DWG/PDF drawings available on our website.

Accessories (Optional parts)



■ See page UCS • UCGS • UCK-P for further details of t dimensions and A section.

Components

No.	Part name	Pcs	Material	Color / Finish
1	Top cover	1	Extruded aluminium A6063S-T5	Black • Light Gray • Metallic silver / Painted
2	Bottom cover	1	Extruded aluminium A6063S-T5	Black • Light Gray • Metallic silver / Painted
3	Panel	2	Aluminium A1100P t=1.5	Black • Light gray / Painted Metallic silver / Painted (Conductive inside)
4	Joint plate	2	Steel SPCC t=2.0	Trivalent chromate
5	Screw (M3 flat head)	12	Steel	Black trivalent chromate
6	Rubber feet	4	Synthetic rubber	Black

■ Panels are covered with a protective film on one side.

1 Dimensions

To select W and H in 1mm intervals, and D length the table below.

Dimensions	Available dimensions
W (width)	50 ~ 450mm (1mm intervals)
H (height)	30 ~ 400mm (1mm intervals)
D (depth)	60, 80, 100, 120, 140, 160, 180, 200, 220, 240, 260, 280, 340mm (13 available D lengths)

■ Refer to the chart on page UCS-3 for available dimensions.

2 Color

To select color code from the table below.

Code	BB	BG	NEW BS	GG	GB	NEW SS	NEW SB
	Black	Black / Light gray	Black / Silver	Light gray	Light gray / Black	Silver	Silver / Black
Color							

3 Corner Radius

To select corner radius on Top/Bottom covers from the table below.

Code	Corner Radius	Available H dimensions	Available D dimensions
3	R3	Internal H = 26mm or larger	Only for 60, 80, 100, 120, 140 models.
5	R5	Internal H = 30mm or larger	All 13 models
8	R8	Internal H = 36mm or larger	All 13 models

4 Vent Slit

To select ventilation slit.

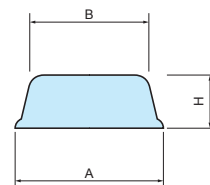
Code	Slit type	Pitch and Positions	Available D dimensions
K	No ventilation slit	—	All 13 models
L	2 x 30mm	See drawings for more details	10 models (D = 120 ~ 340mm)
M	2 x 20mm	See drawings for more details	10 models (D = 120 ~ 340mm)

5 Rubber Feet

To select rubber feet size from the table below.

Code	A	B	H
S	10.8	10.2	3
M	15.4	14.8	5.1
L	21	17	7

■ Adhesive rubber feet can be freely affixed on.



Product No.

To determine a product number, fill W, H, D and select Color code in the following blank boxes.

Product no. UCS - -

1 W **1 H** **1 D** **2 Color code** **3 Corner Radius** **4 Vent Slit** **5 Rubber feet**

Numbering example: W:140 x H:45 x D:180, BB color code, Corner R5, No vent slit, and S size rubber feet.

➔ **UCS140-45-180BB5KS**

Refer to the chart on page UCS-3 for available sizes.

Lead Time

Custom Size Only
Custom Size + Hole Milling

9 business days (1 ~ 3 pcs)
12 business days (1 ~ 3 pcs)

Order Inquiry

For more information, contact us here at sales@takachi-el.co.jp

UCS Size Chart

Refer to the below chart for available sizes.

CAUTION

*For D = 60, 80 or 100mm : H dimension is limited to a minimum of 30mm

*For D = 120mm and 140mm : H dimension is limited to a minimum of 31mm.

*For D = 160mm ~ 280mm : H dimension is limited to a minimum of 36mm.

*For D = 340mm : H dimension is limited to a minimum of 37mm.

*Max H dimension : W dimension * 1.5, up to a maximum of 400mm.

■ [—] sizes are not available.

D	H W	30 ~ 100	101 ~ 125	126 ~ 150	151 ~ 175	176 ~ 200	201 ~ 225	226 ~ 250	251 ~ 275	276 ~ 300	301 ~ 325	326 ~ 350	351 ~ 375	376 ~ 400
60	50 ~ 100	○	○	○	—	—	—	—	—	—	—	—	—	—
	101 ~ 150	○	○	○	○	○	○	—	—	—	—	—	—	—
	151 ~ 200	○	○	○	○	○	○	○	○	○	—	—	—	—
80	50 ~ 100	○	○	○	—	—	—	—	—	—	—	—	—	—
	101 ~ 150	○	○	○	○	○	○	—	—	—	—	—	—	—
	151 ~ 200	○	○	○	○	○	○	○	○	○	—	—	—	—
100	50 ~ 100	○	○	○	—	—	—	—	—	—	—	—	—	—
	101 ~ 150	○	○	○	○	○	○	—	—	—	—	—	—	—
	151 ~ 200	○	○	○	○	○	○	○	○	○	—	—	—	—
120	50 ~ 100	○	○	○	—	—	—	—	—	—	—	—	—	—
	101 ~ 150	○	○	○	○	○	○	—	—	—	—	—	—	—
	151 ~ 200	○	○	○	○	○	○	○	○	○	—	—	—	—
	201 ~ 250	○	○	○	○	○	○	○	○	○	○	○	○	—
140	50 ~ 100	○	○	○	—	—	—	—	—	—	—	—	—	—
	101 ~ 150	○	○	○	○	○	○	—	—	—	—	—	—	—
	151 ~ 200	○	○	○	○	○	○	○	○	○	—	—	—	—
	201 ~ 250	○	○	○	○	○	○	○	○	○	○	○	○	—
160	50 ~ 100	○	○	○	—	—	—	—	—	—	—	—	—	—
	101 ~ 150	○	○	○	○	○	○	—	—	—	—	—	—	—
	151 ~ 200	○	○	○	○	○	○	○	○	○	—	—	—	—
	201 ~ 250	○	○	○	○	○	○	○	○	○	○	○	○	—
	251 ~ 300	○	○	○	○	○	○	○	○	○	○	○	○	○
	301 ~ 350	○	○	○	○	○	○	○	○	○	○	○	○	○
	351 ~ 400	○	○	○	○	○	○	○	○	○	○	○	○	○
	401 ~ 450	○	○	○	○	○	○	○	○	○	○	○	○	○
180	50 ~ 100	○	○	○	—	—	—	—	—	—	—	—	—	—
	101 ~ 150	○	○	○	○	○	○	—	—	—	—	—	—	—
	151 ~ 200	○	○	○	○	○	○	○	○	○	—	—	—	—
	201 ~ 250	○	○	○	○	○	○	○	○	○	○	○	○	—
	251 ~ 300	○	○	○	○	○	○	○	○	○	○	○	○	○
	301 ~ 350	○	○	○	○	○	○	○	○	○	○	○	○	○
	351 ~ 400	○	○	○	○	○	○	○	○	○	○	○	○	○
	401 ~ 450	○	○	○	○	○	○	○	○	○	○	○	○	○

[illegible]

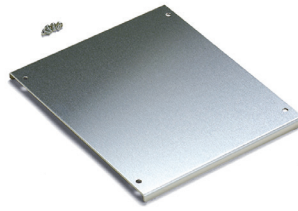
UCSC SERIES

CUSTOM SIZED ALUMINIUM MOUNTING PLATE for UCS • UCGS

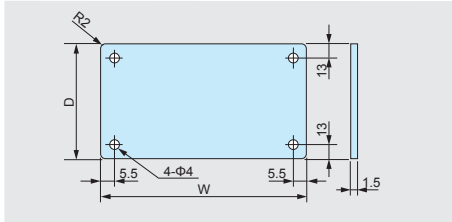
A type



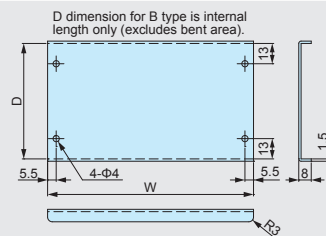
B type



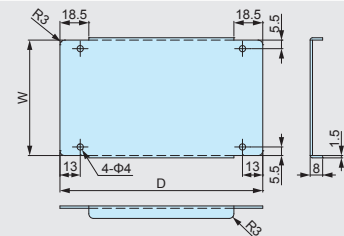
C type



For small to middle sized cases.
Suitable for light load mounting.



For middle to large sized cases. Wider W dimension assists in preventing the mounting plate from bending when heavy loads are mounted on.



For middle to large sized cases. Wider D dimension assists in preventing the mounting plate from bending when heavy loads are mounted on.

Components

Part name	Material	Color / Finish
Mounting plate	Aluminium A1050P t=1.5	Unfinished
Screw	Steel M3-5	Trivalent chromate

UCSC actual dimensions

Case D dimension	Mounting plate W dimension	Mounting plate D dimension
60 ~ 100	Case W dimension - 17 mm	Case D dimension - 22 mm
120	Case W dimension - 18 mm	Case D dimension - 26 mm
140	Case W dimension - 18 mm	Case D dimension - 46 mm
160 ~ 180	Case W dimension - 19 mm	Case D dimension - 50 mm
340	Case W dimension - 19.4 mm	Case D dimension - 50 mm

Confirm Product No.

Specify case dimensions and mounting plate type.

Product no. UCSC

- -
 Case W dimension Case D dimension Type
 (A, B or C)

Example : Case W dimension = 140 mm, D dimension = 180 mm, and A type mounting plate.

UCSC 140-180-A

*Actual mounting plate dimension is 121mm x 130mm.

Refer to the above chart for actual mounting plate dimensions.

Lead time

Custom Size Only
Custom Size + Hole Milling

4 business days (1 ~ 3 pcs)
8 business days (1 ~ 3 pcs)

Order Inquiry

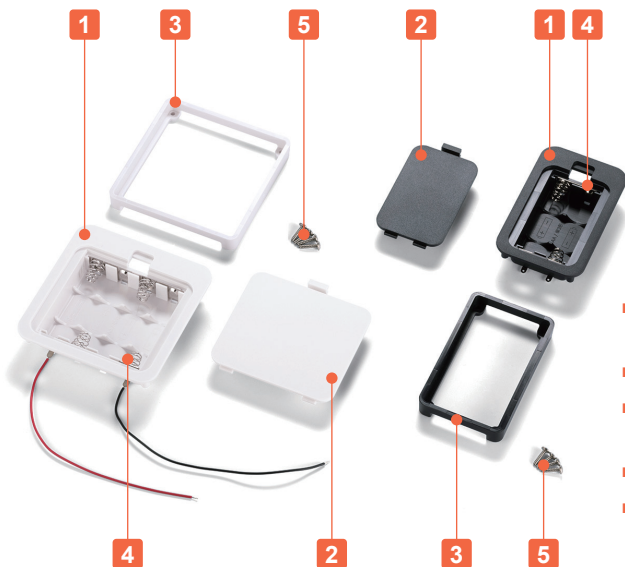
For more information, contact us here at sales@takachi-el.co.jp



Technical Data

Operating temperature: -10°C ~ +60°C

Mount Example



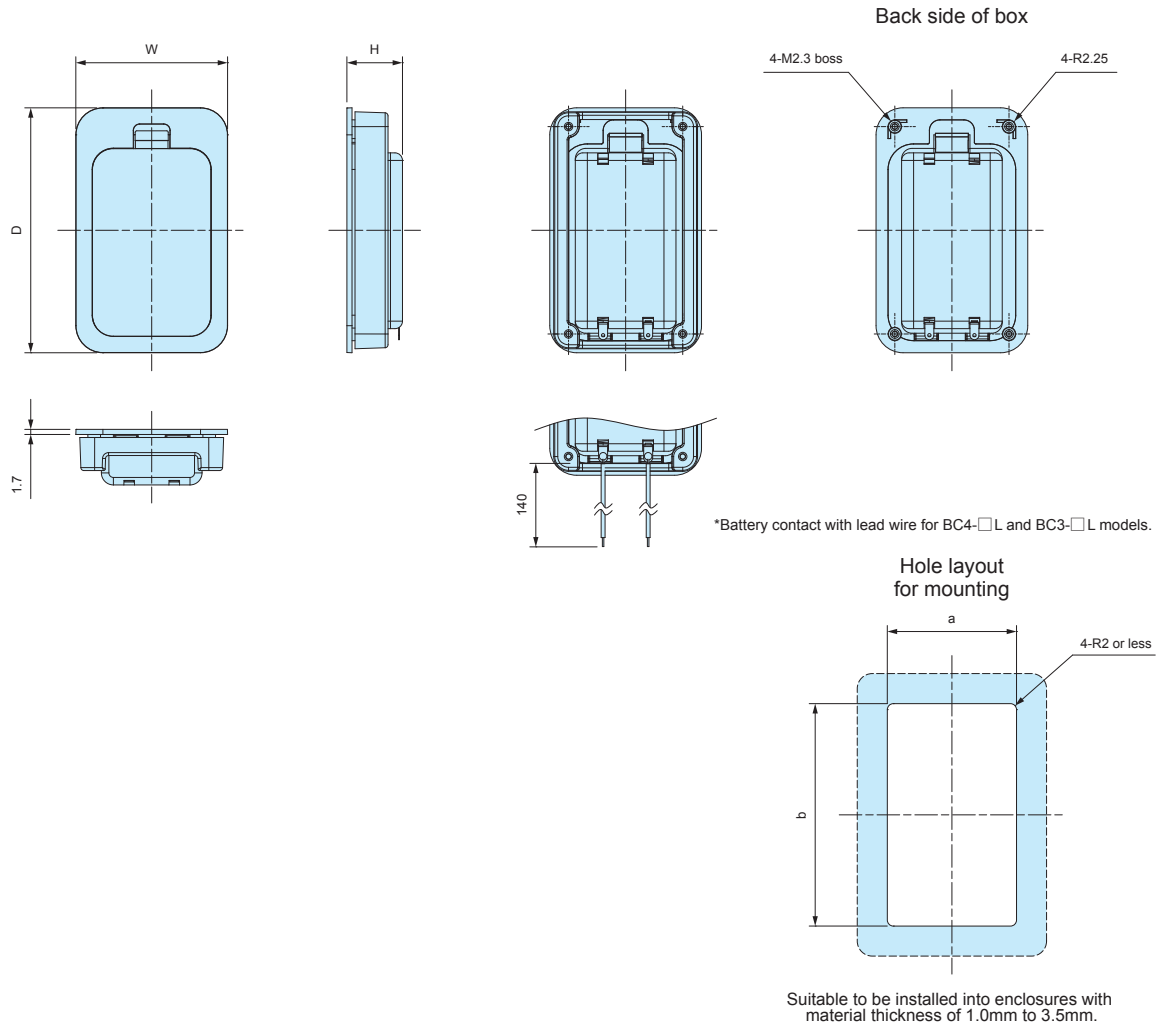
- Suitable to be installed into enclosures with material thickness of 1.0mm to 3.5mm.
- Cover can be opened/closed without any tool for easy battery replacement.
- 5 different battery layouts are available as AA x 2, AA x 3, AA x 4, AAA x 2 and AAA x 4. Each layout comes in 2 models: with lead-wire, and without lead-wire.
- ⊕ ⊖ markings prevents incorrect placement of battery.
- The dimensions of alkaline or manganese batteries may vary depending on country and brand. Use optional battery cushion sponge to prevent rattling.

Components

No.	Part name	Pcs	Material	Color / Finish
1	Box	1	ABS UL94V-0	Black • Off-white
2	Cover	1	ABS UL94V-0	Black • Off-white
3	Frame	1	ABS UL94V-0	Black • Off-white
4	Battery contact Lead wire (BC-L models)	1 set	Battery contact : Brass & steel wire Lead wire : PVC + Copper wire (UL1007 AWG26)	Nickel plated Black • Red
5	Self-tapping screw	4	Steel	Nickel plated

BC dimensions

- DXF/DWG/PDF/STP drawings available on our website.
- The shape and position of battery contacts vary by model.



Type: Without Lead Wire

Product no. / Details

Product no.		Dimensions					Battery layout	Weight (g)
● Black	● Off-white	W	H	D	a	b		
BC4-2-B	BC4-2-W	40	14.8	78.5	32.5	71	*AAA x 2	24.5
BC4-4-B	BC4-4-W	62	14.8	78.5	54.5	71	*AAA x 4	34.5
BC3-2-B	BC3-2-W	50.5	18.5	81.5	43	74	*AA x 2	31.5
BC3-3-B	BC3-3-W	65.5	18.5	81.5	58	74	*AA x 3	39
BC3-4-B	BC3-4-W	80.5	18.5	81.5	73	74	*AA x 4	46

*Alkaline or manganese batteries

Type: With Lead Wire

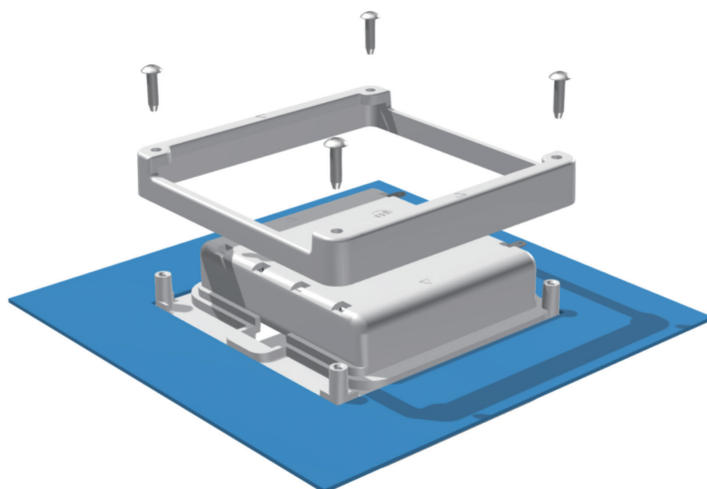
Product no. / Details

Product no.		Dimensions					Battery layout	Weight (g)
● Black	● Off-white	W	H	D	a	b		
BC4-2L-B	BC4-2L-W	40	14.8	78.5	32.5	71	*AAA x 2	25.5
BC4-4L-B	BC4-4L-W	62	14.8	78.5	54.5	71	*AAA x 4	35.5
BC3-2L-B	BC3-2L-W	50.5	18.5	81.5	43	74	*AA x 2	32.5
BC3-3L-B	BC3-3L-W	65.5	18.5	81.5	58	74	*AA x 3	40
BC3-4L-B	BC3-4L-W	80.5	18.5	81.5	73	74	*AA x 4	47

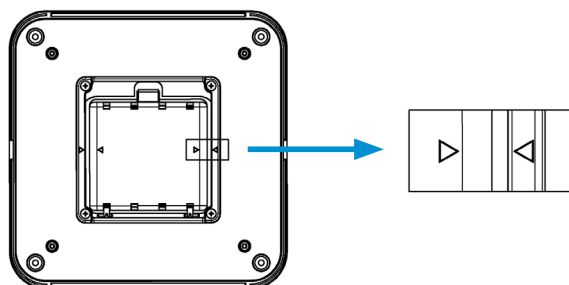
*Alkaline or manganese batteries

How to mount on the enclosures

- Insert battery box into the milled hole first, and fit the frame on the back side. Once mounted, secure the frame with screws.



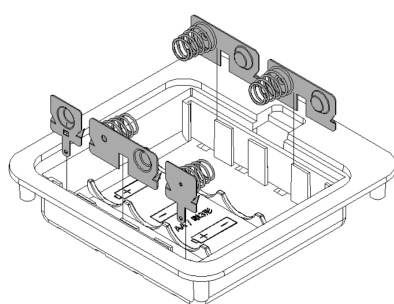
- For BC3-4□ models, ▷ markings are shown on the frame. Install by matching the markings.



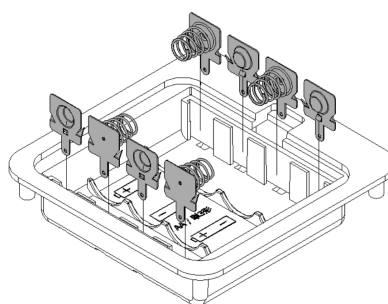
Parallel circuit conversion on BC series battery box

- BC-3□ models can be converted from a series to a parallel circuit. See below illustration for further details.
- IT series (IT-3 models) optional battery contacts can be used for parallel circuit conversion. (See website for more information)
- Use caution when installing or replacing the terminals to avoid the damage to the material.
- Parallel series conversion is available via our customization services.

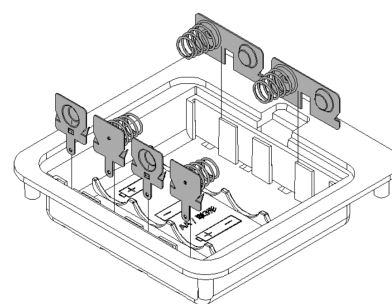
Conversion Example



Series Circuit (Standard)

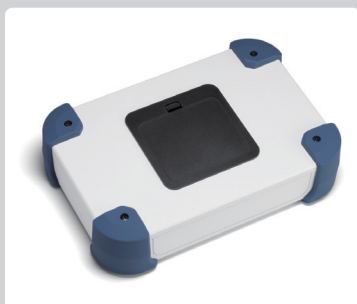


Parallel Circuit (4 batteries)



Parallel Circuit (2 batteries x 2)

Customization Available



For more information, contact us here:

Online form: https://www.takachi-enclosure.com/contact/form_contact
E-mail : sales@takachi-el.co.jp