

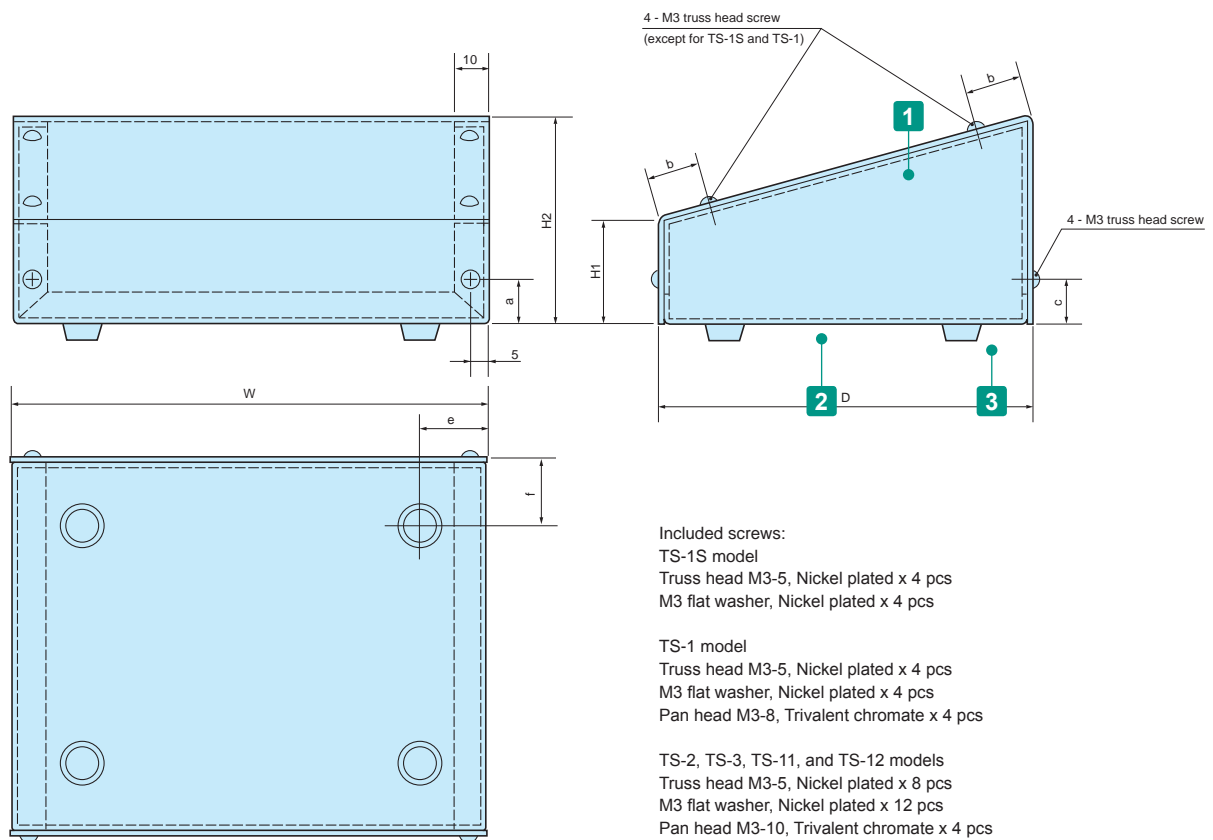
## TS SERIES

## SLOPED DESKTOP ENCLOSURE



## TS dimensions

■ Detailed DXF/DWG drawings available online.



## Components

No.	Part name	Pcs	Material	Color / Finish
1	Cover	1	Aluminium A1050P t=1.0	Silver / Hairline brushed & Anodized
2	Base	1	Aluminium A1100P t=1.0	Black
3	Rubber feet	4	Synthetic rubber	Black

## Product no. / Dimensions

Product no.	W	H1	H2	D	a	b	c	e	f	Weight (g)
TS-10-8	100	30	47.5	75	15	—	23	12	13	100
TS-14-10	140	35	58	100	17.5	—	29	15	16	175
TS20-15	200	35	70	150	15	15	15	20	21	315
TS29-21	290	50	99	210	15	20	15	25	26	615
NEW TS35-27	350	63	120	270	18	18	18	30	31.5	1,276
TS11-15	110	35	70	150	15	15	15	15	16	205
TS15-20	150	60	107	200	15	15	15	20	21	380

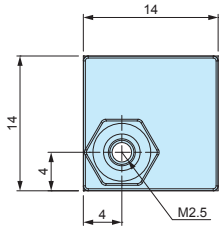
**AST** series**INSERT NUT ADHESIVE STANDOFF**

- Double-sided adhesive tape allows the standoff to be mounted quickly and easily; allows PCB mounting in non-boss enclosures.
- Convenient for installing PCBs into enclosures without the need for customization.
- Please ensure that surface is cleaned and grease-free before adhering.
- Once removed, it cannot be adhered on again.

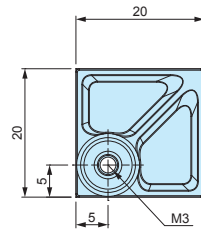
**AST dimensions**

- DXF/DWG/PDF/STP drawings available on our website.

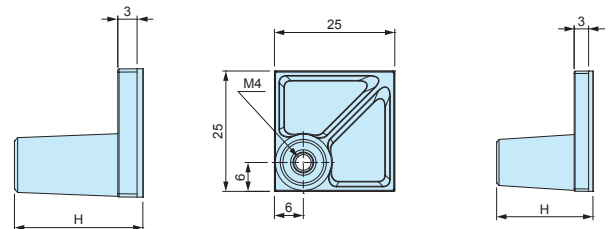
AST2.5-□



AST3-□



AST4-□

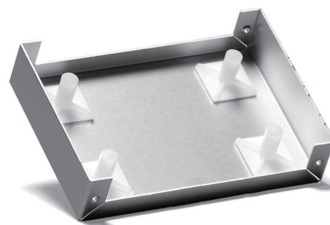
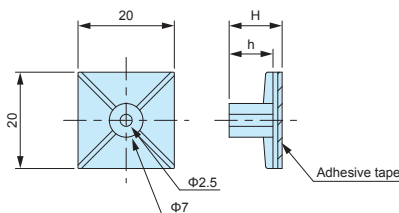
**Product no. / Details**

Product no	H dimension	Included screw	Recommended PCB thickness (mm)	Recommended torque (N · m)	Weight (g)	Pack of	Product no	Pack of
AST2.5-5B	5	M2.5-5 pan head	1.0 ~ 2.0	0.3	0.6 (1 piece)	4	AST2.5-5B-P	100
AST2.5-10B	10	M2.5-5 pan head	1.0 ~ 2.0	0.3	0.8 (1 piece)	4	AST2.5-10B-P	100
AST3-6B	6	M3-6 pan head	1.0 ~ 3.0	0.4	1.5 (1 piece)	4	AST3-6B-P	100
AST3-10B	10	M3-6 pan head	1.0 ~ 3.0	0.4	1.6 (1 piece)	4	AST3-10B-P	100
AST3-15B	15	M3-6 pan head	1.0 ~ 3.0	0.4	1.8 (1 piece)	4	AST3-15B-P	100
AST3-20B	20	M3-6 pan head	1.0 ~ 3.0	0.4	2.1 (1 piece)	4	AST3-20B-P	100
AST4-10.5B	10.5	M4-8 pan head	1.0 ~ 3.5	0.8	2.6 (1 piece)	4	AST4-10.5B-P	50
AST4-20B	20	M4-8 pan head	1.0 ~ 3.5	0.8	3.2 (1 piece)	4	AST4-20B-P	50

**Bulk package**

- Base material / color : Nylon 66 (UL94V-2) / Black
- Nut • screw material / finish : Steel / Trivalent chromate

- Bulk packaging is available. See "Bulk package" column above.
- Screws are not included for bulk packages.

**ASR** series**ADHESIVE PCB STANDOFF****ASR dimensions**

- DXF/DWG/PDF drawings available on our website.

**Technical Data**

Recommended torque : 0.4N · m

- M3 tapping screw use adhesive standoff.  
Recommended to be used with EM-3 or EM-3-6 self-tapping screws (See page 398).
- Please ensure that surface is cleaned and grease-free before adhering.
- Once removed, it cannot be adhered on again.

**Product no. / Details**

- Material / Color: Nylon 66 (UL94V-2) / Natural

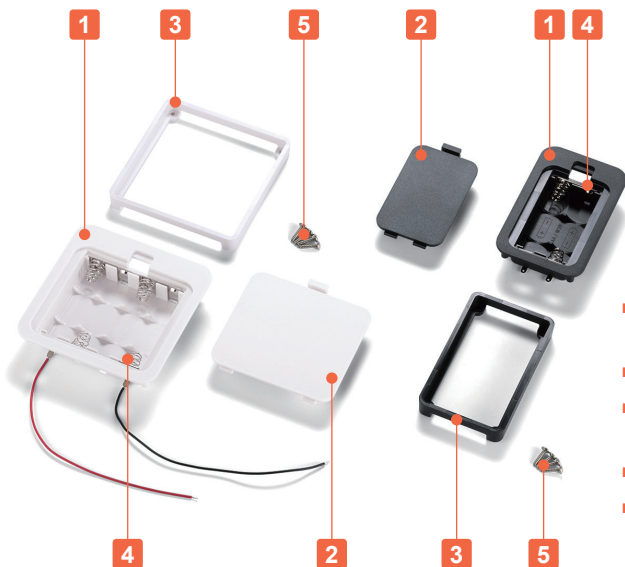
Product no	H	h	Weight (g)	Pack of
ASR- 5	5.1	3.1	0.9 (1 piece)	10
ASR- 6	6.4	4.4	1.0 (1 piece)	10
ASR- 7	7.2	5.1	0.9 (1 piece)	10
ASR- 8	8.1	6.3	0.9 (1 piece)	10
ASR- 9	9	7	1.0 (1 piece)	10
ASR-11	11	9	1.0 (1 piece)	10
ASR-13	12.7	10.7	1.2 (1 piece)	10
ASR-14.5	14.7	12.8	1.1 (1 piece)	10
ASR-16	15.9	13.9	1.3 (1 piece)	10
ASR-19	19.1	17.1	1.4 (1 piece)	10



## Technical Data

Operating temperature: -10°C ~ +60°C

## Mount Example



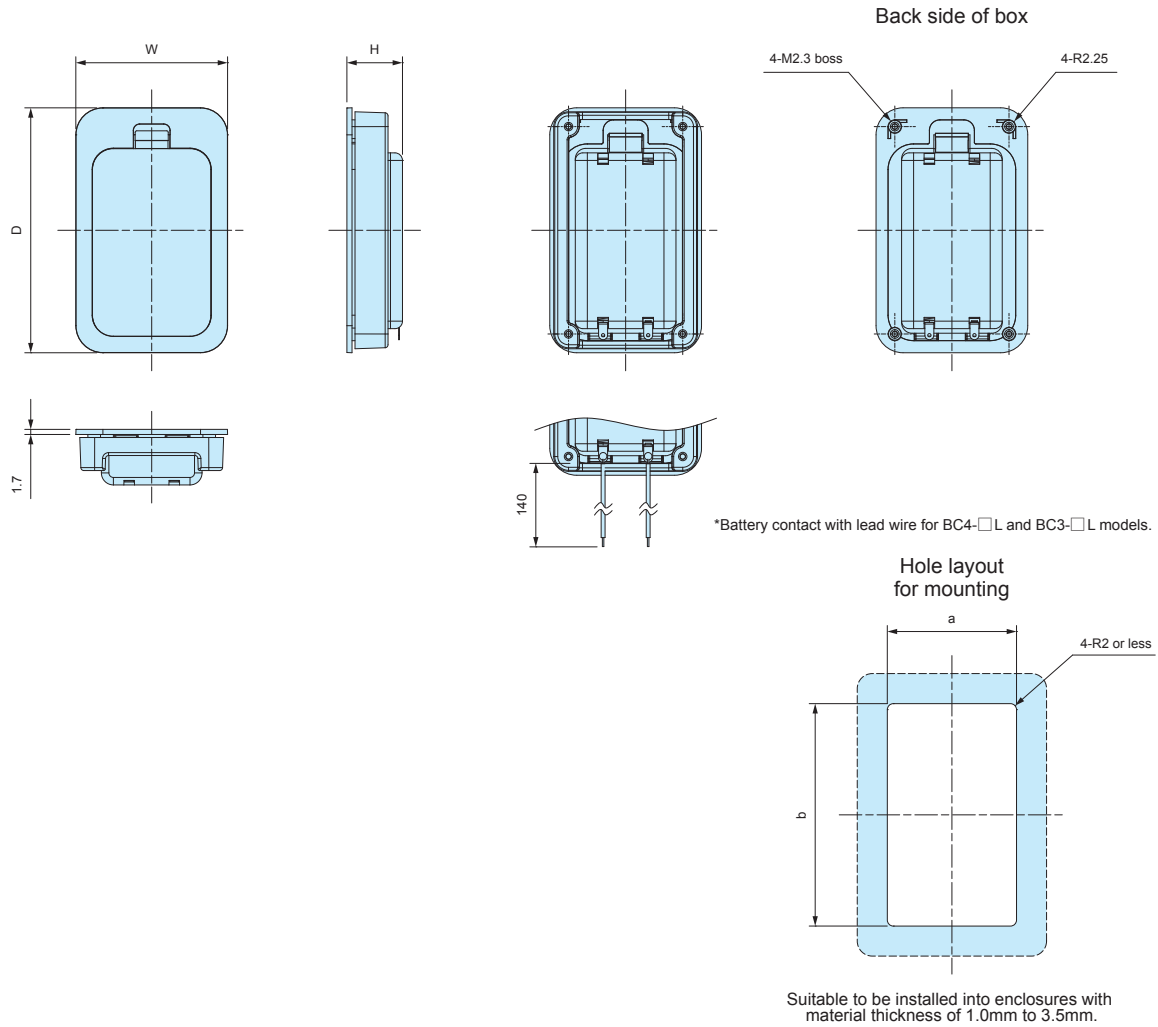
- Suitable to be installed into enclosures with material thickness of 1.0mm to 3.5mm.
- Cover can be opened/closed without any tool for easy battery replacement.
- 5 different battery layouts are available as AA x 2, AA x 3, AA x 4, AAA x 2 and AAA x 4. Each layout comes in 2 models: with lead-wire, and without lead-wire.
- ⊕⊖ markings prevents incorrect placement of battery.
- The dimensions of alkaline or manganese batteries may vary depending on country and brand. Use optional battery cushion sponge to prevent rattling.

## Components

No.	Part name	Pcs	Material	Color / Finish
1	Box	1	ABS UL94V-0	Black • Off-white
2	Cover	1	ABS UL94V-0	Black • Off-white
3	Frame	1	ABS UL94V-0	Black • Off-white
4	Battery contact Lead wire (BC-L models)	1 set	Battery contact : Brass & steel wire Lead wire : PVC + Copper wire (UL1007 AWG26)	Nickel plated Black • Red
5	Self-tapping screw	4	Steel	Nickel plated

## BC dimensions

- DXF/DWG/PDF/STP drawings available on our website.
- The shape and position of battery contacts vary by model.



## Type: Without Lead Wire

### Product no. / Details

Product no.		Dimensions					Battery layout	Weight (g)
● Black	● Off-white	W	H	D	a	b		
BC4-2-B	BC4-2-W	40	14.8	78.5	32.5	71	*AAA x 2	24.5
BC4-4-B	BC4-4-W	62	14.8	78.5	54.5	71	*AAA x 4	34.5
BC3-2-B	BC3-2-W	50.5	18.5	81.5	43	74	*AA x 2	31.5
BC3-3-B	BC3-3-W	65.5	18.5	81.5	58	74	*AA x 3	39
BC3-4-B	BC3-4-W	80.5	18.5	81.5	73	74	*AA x 4	46

\*Alkaline or manganese batteries

## Type: With Lead Wire

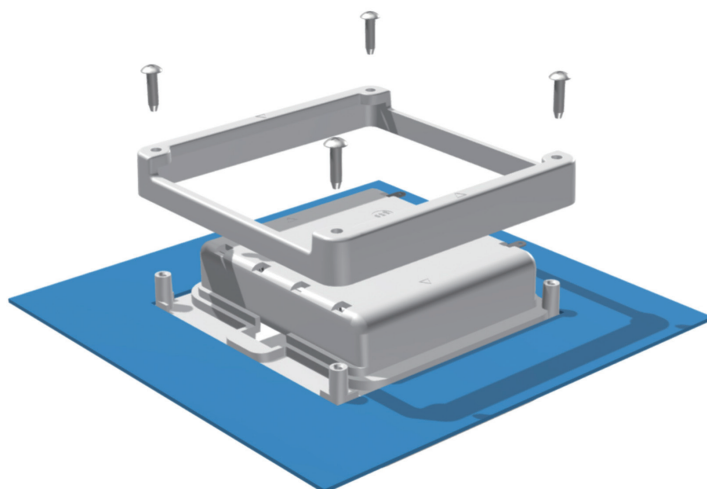
### Product no. / Details

Product no.		Dimensions					Battery layout	Weight (g)
● Black	● Off-white	W	H	D	a	b		
BC4-2L-B	BC4-2L-W	40	14.8	78.5	32.5	71	*AAA x 2	25.5
BC4-4L-B	BC4-4L-W	62	14.8	78.5	54.5	71	*AAA x 4	35.5
BC3-2L-B	BC3-2L-W	50.5	18.5	81.5	43	74	*AA x 2	32.5
BC3-3L-B	BC3-3L-W	65.5	18.5	81.5	58	74	*AA x 3	40
BC3-4L-B	BC3-4L-W	80.5	18.5	81.5	73	74	*AA x 4	47

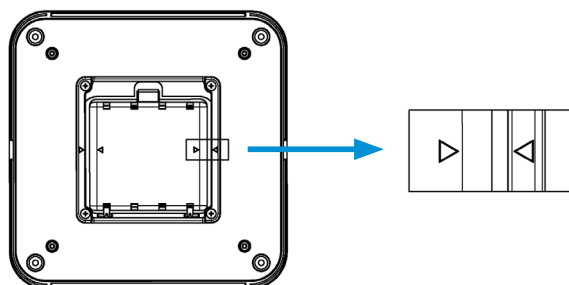
\*Alkaline or manganese batteries

# How to mount on the enclosures

- Insert battery box into the milled hole first, and fit the frame on the back side. Once mounted, secure the frame with screws.



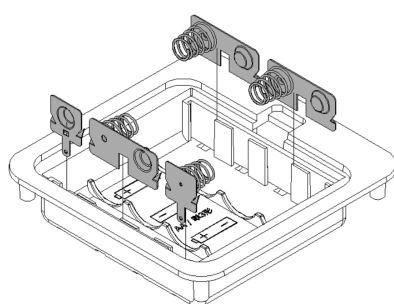
- For BC3-4□ models, ▷ markings are shown on the frame. Install by matching the markings.



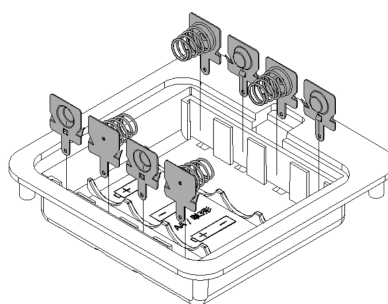
## Parallel circuit conversion on BC series battery box

- BC-3□ models can be converted from a series to a parallel circuit. See below illustration for further details.
- IT series (IT-3 models) optional battery contacts can be used for parallel circuit conversion. (See website for more information)
- Use caution when installing or replacing the terminals to avoid the damage to the material.
- Parallel series conversion is available via our customization services.

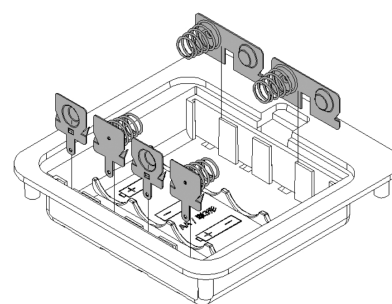
## Conversion Example



Series Circuit (Standard)

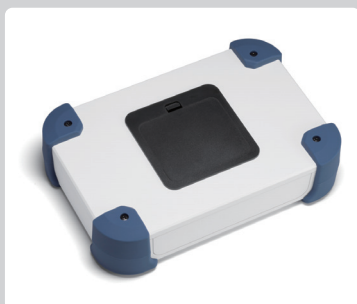


Parallel Circuit (4 batteries)



Parallel Circuit (2 batteries x 2)

## Customization Available



For more information, contact us here:

Online form: [https://www.takachi-enclosure.com/contact/form\\_contact](https://www.takachi-enclosure.com/contact/form_contact)  
E-mail : [sales@takachi-el.co.jp](mailto:sales@takachi-el.co.jp)