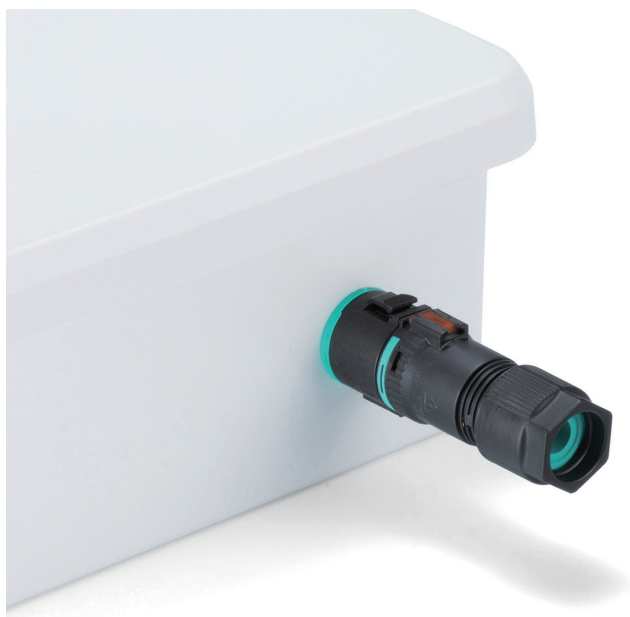
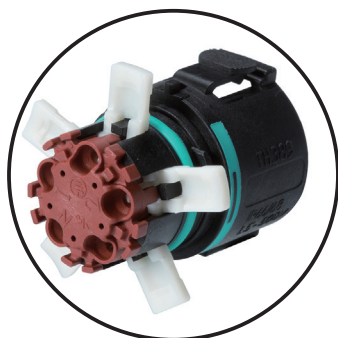


# THS389E series

## IP68 UL CERTIFIED SNAP-LOCK SCREWLESS MINI PANEL-MOUNT CONNECTOR



### SCREWLESS



- Screwless terminal block for high-speed connection.
- 4P and 5P pole terminal models are available.
- UL2238 / C22.2 No. 182.3 certified products.

### PUSH PULL EASY CLICK !



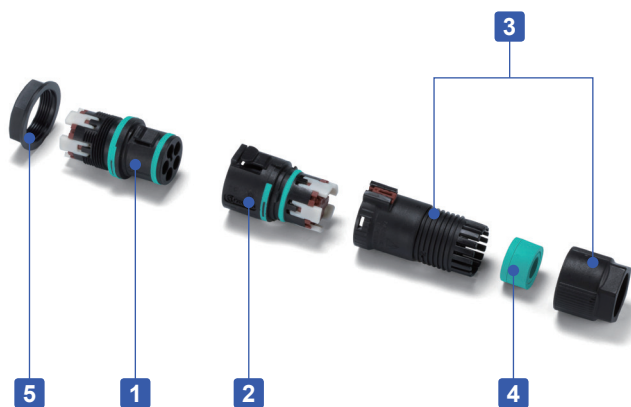
- Easy connection / disconnection through the use of the snap-lock mechanism while installed on panels or enclosures.

#### Technical Data

Protection class : IP68 0.5bar/1h (1 hour / 5m depth)  
 Operating temperature : -40°C ~ +100°C  
 EN61984 compliant.

#### Specifications

Rated voltage	AC500V (EN61984)
	AC600V (UL2238/C22.2 No.182.3)
Rated current	17.5A (EN61984)
	10A (UL2238/C22.2 No.182.3)
Applicable wire (Stranded • Single)	0.25mm <sup>2</sup> ~ 1.5mm <sup>2</sup>
Impulse withstand voltage	2.5kV
Number of insertion/extraction	100 times



#### Components

No.	Part name	Pcs	Material	Color / Finish
1	Plug	1	PA66GF (UL94V-0) • TPE	Black • Green
2	Socket	1	PA66GF (UL94V-0) • TPE	Black • Green
3	Cable gland	1	PA66 (UL94V-2)	Black
4	Sealing insert	1	TPE	Green
3	Lock nut	1	PA66 (UL94V-2)	Black

■ PA66 = Polyamide 66

■ PA66GF = Glass fiber filled polyamide 66

Accessories (Optional parts)



Sealing insert  
See page Tool-5



Sealing plug • socket cap  
See page Cap-1



Exclusive tightening tool  
See page Tool-5



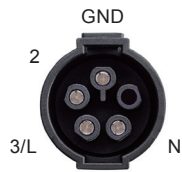
Exclusive locking tool  
See page Tool-1

Terminal sequence

Cable side



THS389E-4P-SP



THS389E-4P-PS



THS389E-5P-SP



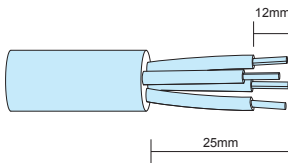
THS389E-5P-PS



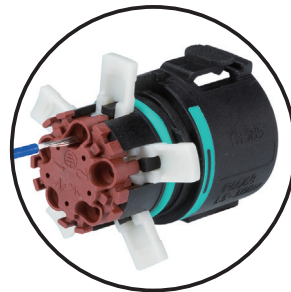
Panel-mount side



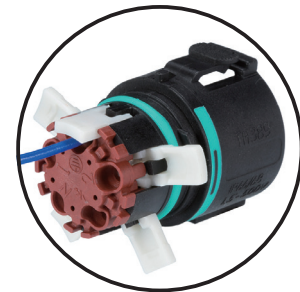
Wire connection diagram



■ Ready the wiring.



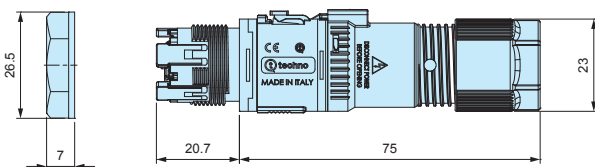
■ Lift the lever and insert wire.



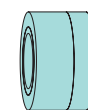
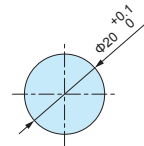
■ Close / drop the lever to complete the connection.

THS389E dimensions

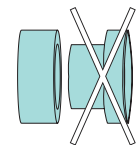
■ DXF/DWG/PDF drawings available on our website.



Sealing insert



Cable diameter  
 $\Phi 7\text{mm} \sim \Phi 9\text{mm}$



Cable diameter  
 $\Phi 9\text{mm} \sim \Phi 13.5\text{mm}$

■ Applicable cable size range can be expanded by removing the inner sealing insert.

Product no. / Details

Product no.	Cable side / Panel-mount side	Cable range	Number of poles	Mounting thickness (mm)
THS389E-4P-SP	Socket / Plug	$\Phi 7.0 \sim \Phi 13.5$	4P	1 ~ 3
THS389E-4P-PS	Plug / Socket	$\Phi 7.0 \sim \Phi 13.5$	4P	1 ~ 3
THS389E-5P-SP	Socket / Plug	$\Phi 7.0 \sim \Phi 13.5$	5P	1 ~ 3
THS389E-5P-PS	Plug / Socket	$\Phi 7.0 \sim \Phi 13.5$	5P	1 ~ 3

# THS389 series

# IP68 UL CERTIFIED SNAP-LOCK SCREWLESS MINI CONNECTOR

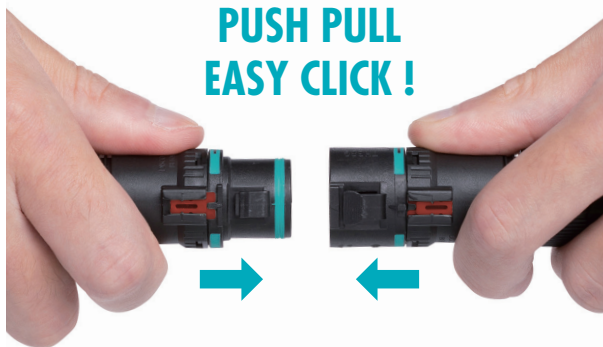


## SCREWLESS



- Screwless terminal block for high-speed connection.
- 4P and 5P pole terminal models are available.
- UL2238 / C22.2 No. 182.3 certified products.

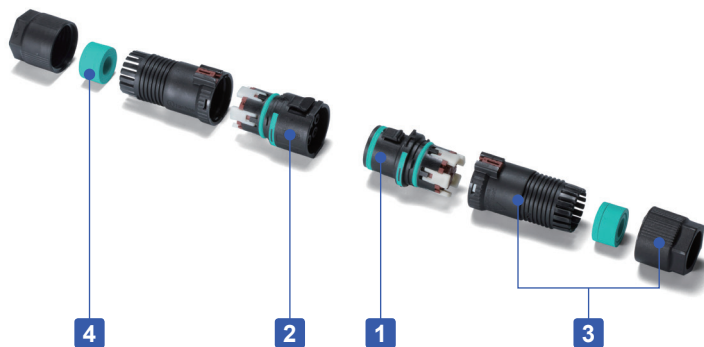
## PUSH PULL EASY CLICK !



- Easy connection / disconnection through the use of the snap-lock mechanism.

### Technical Data

Protection class : IP68 0.5bar/1h (1 hour / 5m depth)  
 Operating temperature : -40°C ~ +100°C  
 EN61984 compliant.



### Specifications

Rated voltage	AC500V (EN61984)
	AC600V (UL2238/C22.2 No.182.3)
Rated current	17.5A (EN61984)
	10A (UL2238/C22.2 No.182.3)
Applicable wire (Stranded • Single)	0.25mm <sup>2</sup> ~ 1.5mm <sup>2</sup>
Impulse withstand voltage	2.5kV
Number of insertion/extraction	100 times

### Components

No.	Part name	Pcs	Material	Color / Finish
1	Plug	1	PA66GF (UL94V-0) • TPE	Black • Green
2	Socket	1	PA66GF (UL94V-0) • TPE	Black • Green
3	Cable gland	2	PA66 (UL94V-2)	Black
4	Sealing insert	2	TPE	Green

■ PA66 = Polyamide 66  
 ■ PA66GF = Glass fiber filled polyamide 66

Accessories (Optional parts)



Sealing insert  
See page Tool-5



Exclusive bracket  
See page Tool-1



Sealing plug • socket cap  
See page Cap-1



Exclusive tightening tool  
See page Tool-5

Terminal sequence

Plug side (Male)



THS389-4P



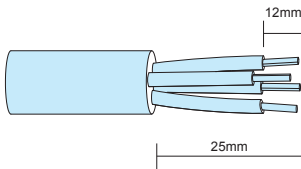
THS389-5P



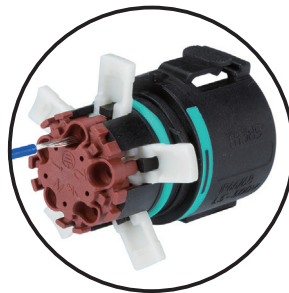
Socket side (Female)



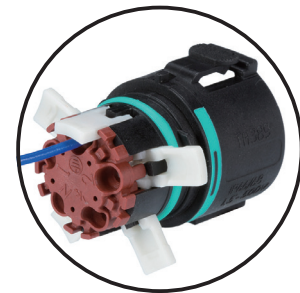
Wire connection diagram



■ Ready the wiring.



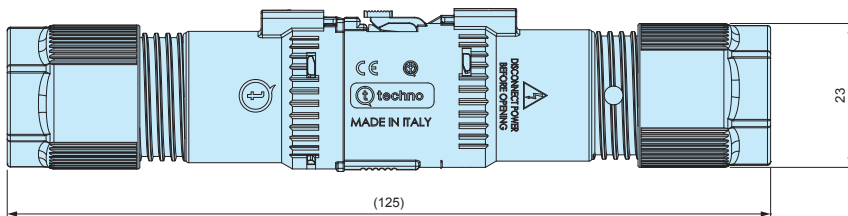
■ Lift the lever and insert wire.



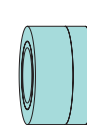
■ Close / drop the lever to complete the connection.

THS389 dimensions

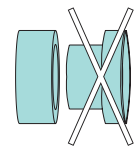
■ DXF/DWG/PDF drawings available on our website.



Sealing insert



Cable diameter  
Φ7mm ~ Φ9mm



Cable diameter  
Φ9mm ~ Φ13.5mm

■ Applicable cable size range can be expanded by removing the inner sealing insert.

Product no. / Details

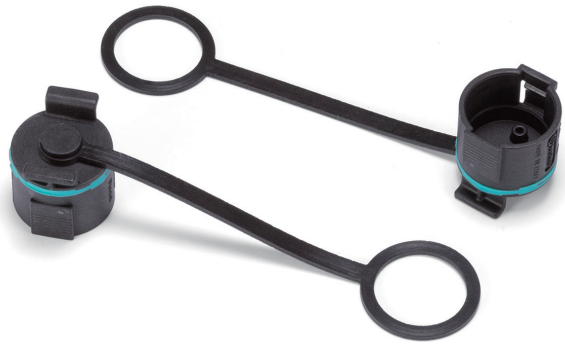
Product no.	Cable range	Number of poles
THS389-4P	Φ7.0 ~ Φ13.5	4P
THS389-5P	Φ7.0 ~ Φ13.5	5P



# SEALING PLUG CAP for THB389 • 389E • THS389 • 389E



■ DXF/DWG/PDF drawings available on our website.



Installation example



- Protect plug from dust or foreign objects when not in use. Material : Cap / Polyamide 66 • Ring / Silicone.
- Sealing plug caps are not waterproof.

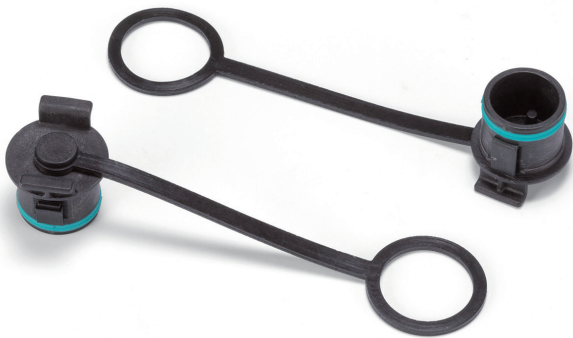
**Product no. / Details**

Product no.	Suitable models
6DB055400	THB389 • 389E • THS389 • 389E - Plug side

# SEALING SOCKET CAP for THB389 • 389E • THS389 • 389E



■ DXF/DWG/PDF drawings available on our website.



Installation example



- Protect socket from dust or foreign objects when not in use. Material : Cap / Polyamide 66 • Ring / Silicone.
- Sealing socket caps are not waterproof.

**Product no. / Details**

Product no.	Suitable models
6DB055300	THB389 • 389E • THS389 • 389E - Socket side

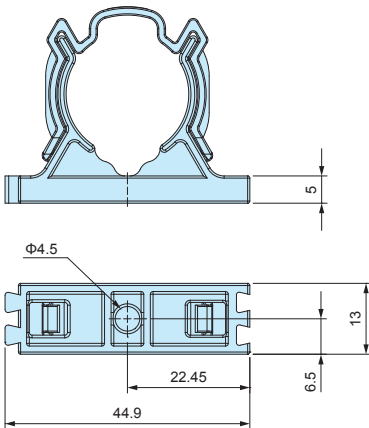
# EXCLUSIVE BRACKET for THB389 • THS389



Installation example



■ Use when affixing / securing the connector onto a surface.



**Product no. / Details**

■ PA66 = Polyamide 66

Product no.	Material / Color	Suitable models
6000589CC	PA66 / Black	THB389 • THS389

# EXCLUSIVE LOCKING TOOL for THB389E • THS389E



Plug side installation



Socket side installation

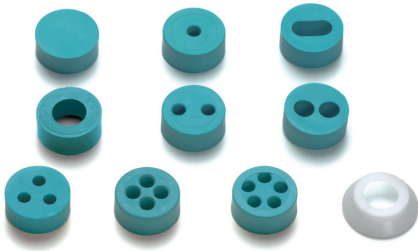
■ Exclusive Locking Tool for THB389E • THS389E

**Product no. / Details**

■ PA66 = Polyamide 66

Product no.	Material / Color	Suitable models
6000532KC	PA66 / Black	THB389E • THS389E - Panel mount side

# SEALING INSERT for THA • THB • THS



- Optional sealing insert for THA209, THB387L, 387LE, 389, 389E, 390, 399Y, 400, 402T, 405, 406, THS389 and 389E.  
(Not applicable to be used for THB381, 381E, 387, 387E, 391 and 392 series.)
- Recommended to be used to change the compatible wire diameter, or for installation of multiple wires.
- 6000087LF cap can be used to prevent the rubber bushing from protruding, as well as stabilizing the waterproof performance when using wire of diameter 7.0mm or smaller.

Product no. / Details

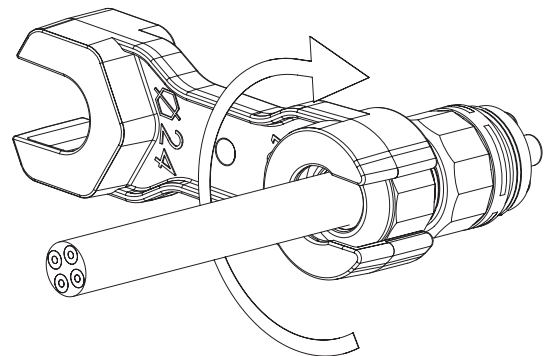
Product no.	Appearance	Cable range	Material	Pack of
600013700		Blind insert without hole	TPE	10
600012700		11mm x 5.5mm	TPE	10
600037000		Φ4.0 ~ Φ6.5mm	TPE • POM	10 each
604001100		Φ5.5 ~ Φ9.5mm Use fixing cap for cables sized Φ7.0mm or smaller	TPE • POM	10 each
600013600		Φ2.0 ~ Φ4.0mm	TPE • POM	10 each
600012500		Φ2.0 ~ Φ4.0mm	TPE • POM	10 each
600030600		Φ4.5 ~ Φ6.0mm	TPE	10
600012600		Φ2.0 ~ Φ4.0mm	TPE	10
600018200		Φ2.0 ~ Φ3.5mm	TPE	10
600022400		Φ2.5 ~ Φ3.5mm	TPE	10
6000087LF		Cap for cables sized Φ7.0mm or smaller	POM	10

■ 6000087LF cap cannot be used with 600030600 and 600022400

# EXCLUSIVE TIGHTENING TOOL for THB • THS



How to use



- Dedicated locking tool for tightening of the cable gland cap.

Product no. / Details

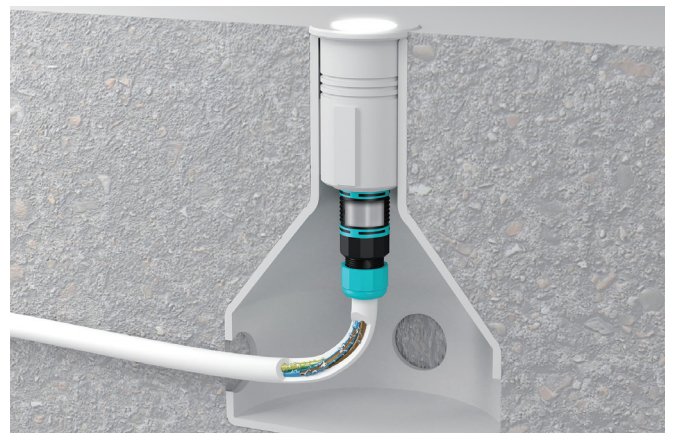
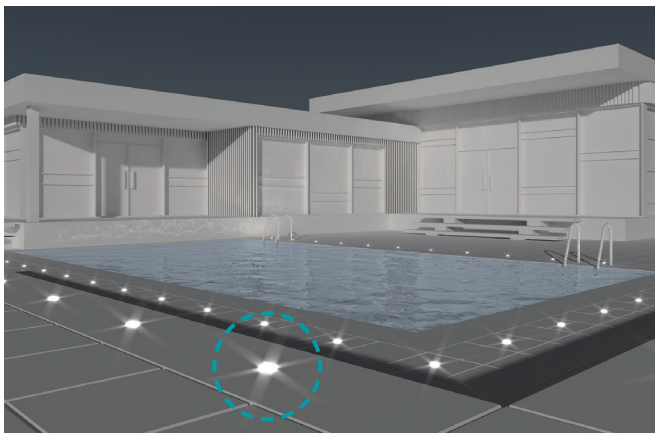
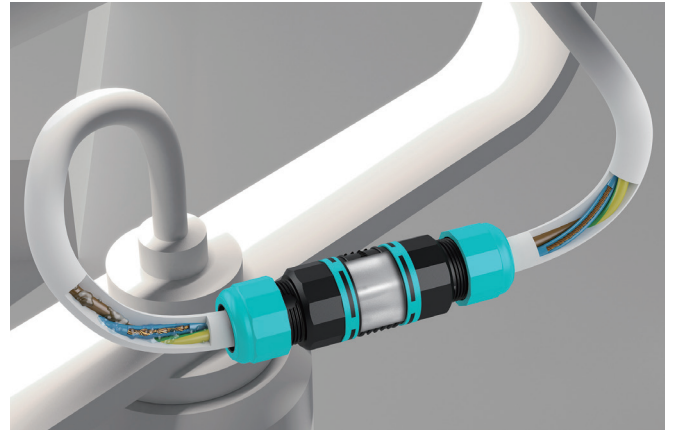
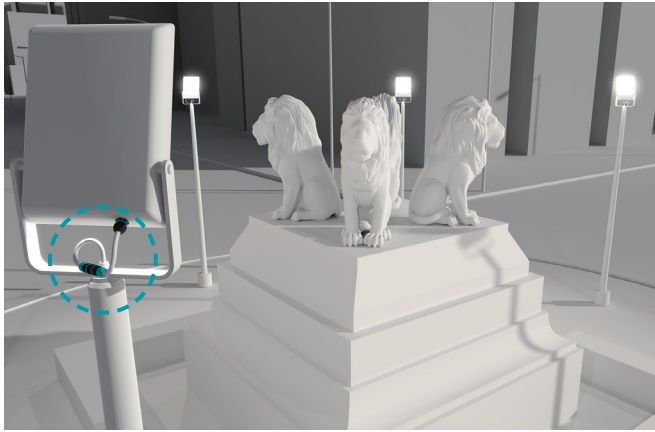
Product no.	Material / Color	Suitable models
6000337BC	PA66GF / Black	THB387 • 387E • 387L • 387LE • 389 • 389E • 390 • 390T • 391 • 392 • 399Y • 400 • 402T • 405 • 406 • THS389 • 389E

■ PA66GF = Glass fiber filled polyamide 66



# Application Example - Waterproof Connector

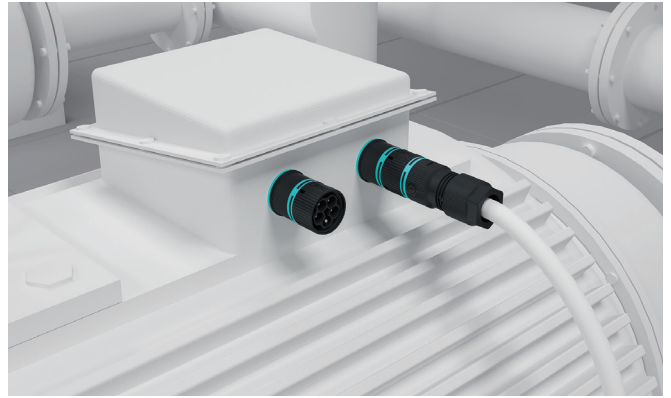
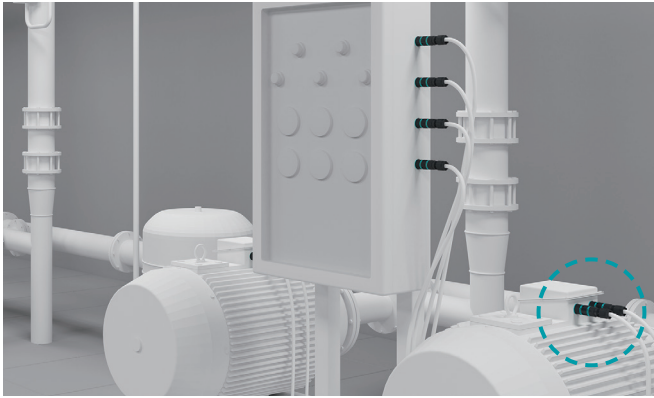
## Outdoor LED Lighting Connection



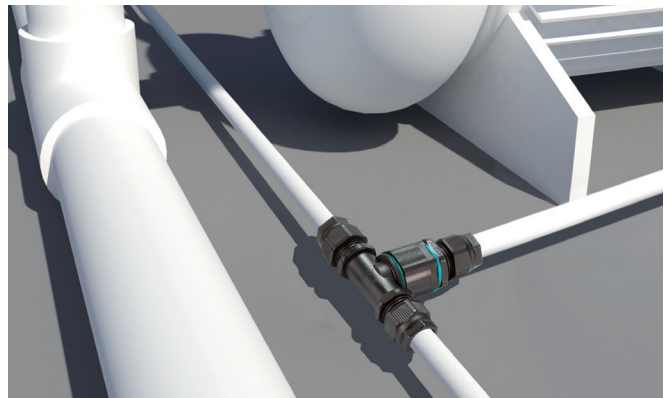
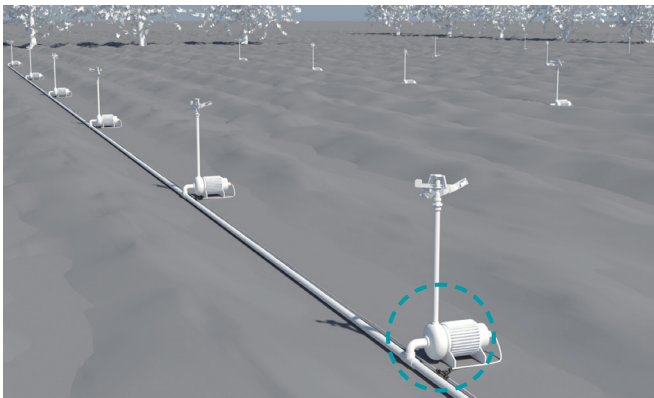
Application Example-1



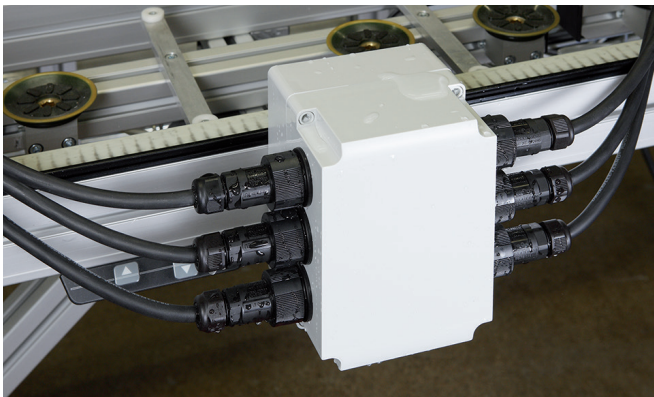
### Industrial Motor Connection



### Sprinkler System Connection



### Power / Sensor Signal Relay in Factory Automation



### Machinery



### Circuit Breaker Connector



### Underground • Underfloor Wiring

