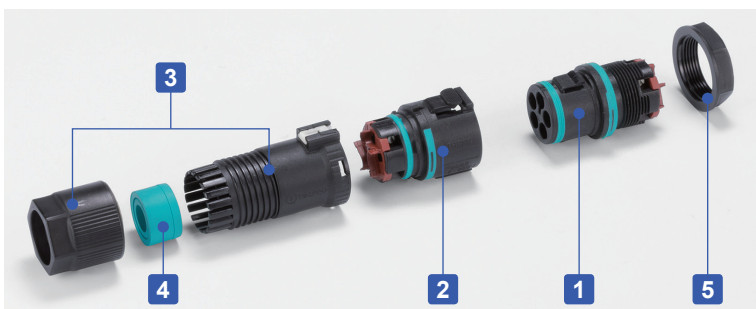




- IP68 snap-lock mini panel-mount connector for easy and frequent connection / disconnection.
- Can be attached / detached while installed on panels or enclosures.
- 4P and 5P pole models are available.
- Plug-socket panel-mount type consisting of the plug side (male) and socket side (female).

Technical Data

Protection class : IP68 0.5bar/1h (1 hour / 5m depth)
 Operating temperature : -40°C ~ +100°C
 EN61984 compliant.



■ Shown above is SP (Socket / Plug) type.

Specifications

Rated voltage	AC500V
Rated current	17.5A
Applicable wire	Stranded wire 0.25mm ² ~ 1.5mm ²
Impulse withstand voltage	2.5kV

Components

■ PA66 = Polyamide 66
 ■ PA66GF = Glass fiber filled polyamide 66

No.	Part name	Pcs	Material	Color / Finish
1	Plug	1	PA66GF (UL94V-0) • TPE	Black • Green
2	Socket	1	PA66GF (UL94V-0) • TPE	Black • Green
3	Cable gland	2	PA66 (UL94V-2)	Black
4	Sealing insert	2	TPE	Green
5	Lock nut	1	PA66 (UL94V-2)	Black

Accessories (Optional parts)



Sealing insert
See page Tool-5



Sealing plug • socket cap
See page Cap-1



Exclusive tightening tool
See page Tool-5



Exclusive locking tool
See page Tool-1

Terminal sequence

Cable side



THB389E-4P-SP



THB389E-4P-PS



THB389E-5P-SP



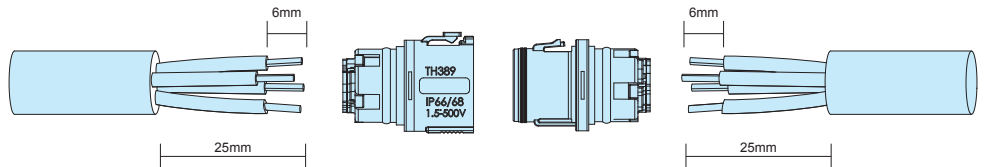
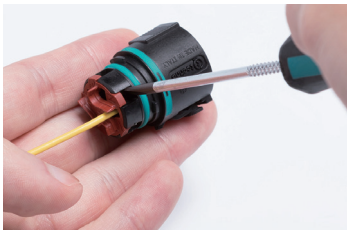
THB389E-5P-PS



Panel-mount side



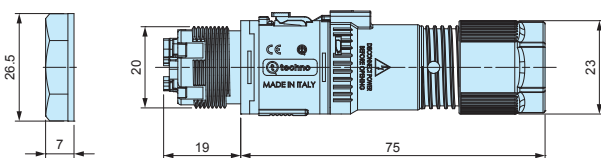
Wire connection diagram



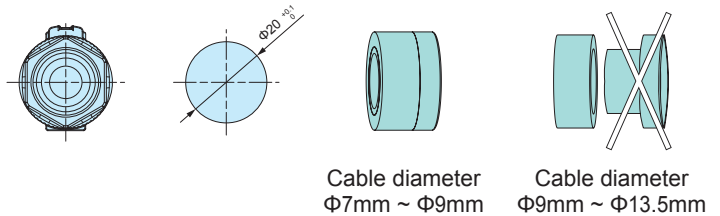
- Screw type connection method; soldering or special tools are not required.
- Screwdriver flathead tip width of 3mm is recommended.
- Screws may be screwed in firmly. Use a screwdriver with proper grip handles to loosen it.

THB389E dimensions

■ DXF/DWG/PDF drawings available on our website.



Sealing insert



- Applicable cable size range can be expanded by removing the inner sealing insert.

Product no. / Details

Product no.	Cable side / Panel mount side	Cable range	Number of poles	Mounting thickness (mm)
THB389E-4P-SP	Socket / Plug	Φ7.0 ~ Φ13.5	4P	1 ~ 3
THB389E-4P-PS	Plug / Socket	Φ7.0 ~ Φ13.5	4P	1 ~ 3
THB389E-5P-SP	Socket / Plug	Φ7.0 ~ Φ13.5	5P	1 ~ 3
THB389E-5P-PS	Plug / Socket	Φ7.0 ~ Φ13.5	5P	1 ~ 3



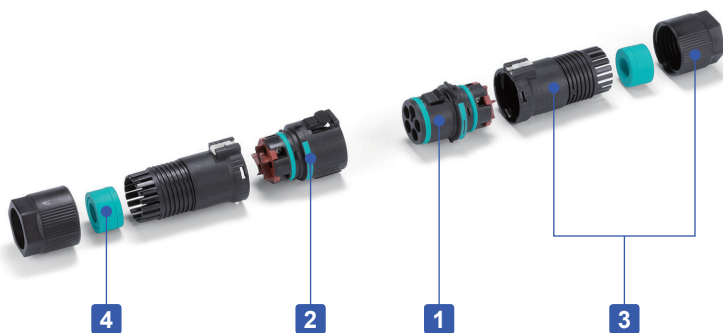
- IP68 snap-lock connector for easy and frequent connection / disconnection.
- 4P and 5P pole models are available.
- Plug-socket connector type consisting of the plug side (male) and socket side (female).

Technical Data

Protection class : IP68 0.5bar/1h (1 hour / 5m depth)
 Operating temperature : -40°C ~ +100°C
 EN61984 compliant.

Specifications

Rated voltage	AC500V
Rated current	17.5A
Applicable wire	Stranded wire 0.25mm ² ~ 1.5mm ²
Impulse withstand voltage	2.5kV



Components

No.	Part name	Pcs	Material	Color / Finish
1	Plug	1	PA66GF (UL94V-0) • TPE	Black • Green
2	Socket	1	PA66GF (UL94V-0) • TPE	Black • Green
3	Cable gland	2	PA66 (UL94V-2)	Black
4	Sealing insert	2	TPE	Green

■ PA66 = Polyamide 66
 ■ PA66GF = Glass fiber filled polyamide 66

Accessories (Optional parts)



Sealing insert
See page Sealing Insert-2



Exclusive bracket
See page Tool-1



Sealing plug • socket cap
See page Cap-1



Exclusive tightening tool
See page Tool-4

Terminal sequence

Plug side (Male)



THB389-4P



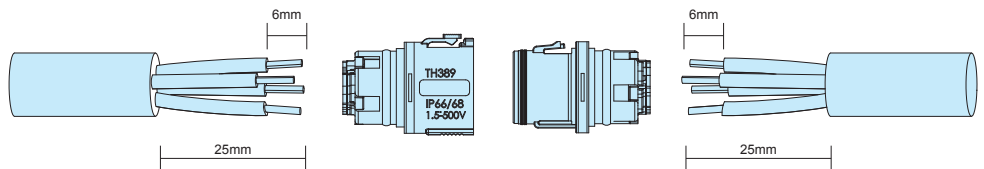
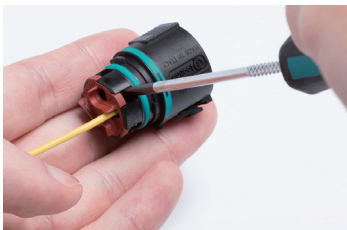
THB389-5P



Socket side (Female)



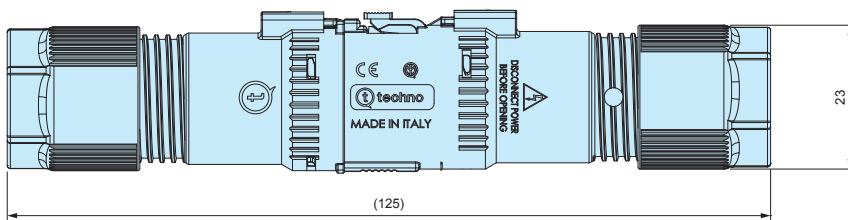
Wire connection diagram



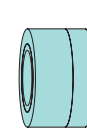
- Screw type connection method; soldering or special tools are not required.
- Screwdriver flathead tip width of 3mm is recommended.
- Screws may be screwed in firmly. Use a screwdriver with proper grip handles to loosen it.

THB389 dimensions

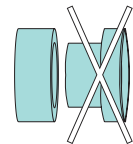
■ DXF/DWG/PDF drawings available on our website.



Sealing insert



Cable diameter
Φ7mm ~ Φ9mm



Cable diameter
Φ9mm ~ Φ13.5mm

- Applicable cable size range can be expanded by removing the inner sealing insert.

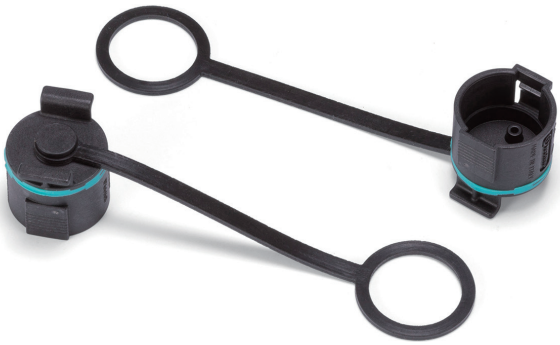
Product no. / Details

Product no.	Cable range	Number of poles
THB389-4P	Φ7.0 ~ Φ13.5	4P
THB389-5P	Φ7.0 ~ Φ13.5	5P

SEALING PLUG CAP for THB389 • 389E • THS389 • 389E



■ DXF/DWG/PDF drawings available on our website.



Installation example



- Protect plug from dust or foreign objects when not in use. Material : Cap / Polyamide 66 • Ring / Silicone.
- Sealing plug caps are not waterproof.

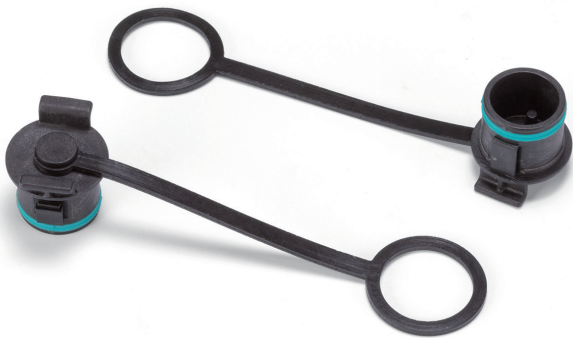
Product no. / Details

Product no.	Suitable models
6DB055400	THB389 • 389E • THS389 • 389E - Plug side

SEALING SOCKET CAP for THB389 • 389E • THS389 • 389E



■ DXF/DWG/PDF drawings available on our website.



Installation example



- Protect socket from dust or foreign objects when not in use. Material : Cap / Polyamide 66 • Ring / Silicone.
- Sealing socket caps are not waterproof.

Product no. / Details

Product no.	Suitable models
6DB055300	THB389 • 389E • THS389 • 389E - Socket side

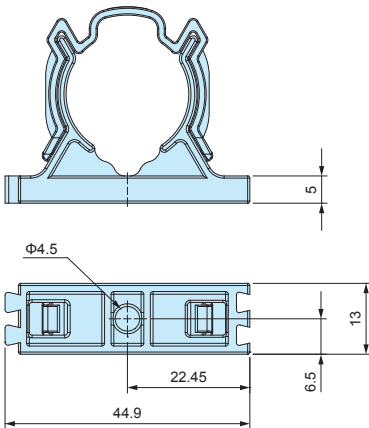
EXCLUSIVE BRACKET for THB389 • THS389



Installation example



■ Use when affixing / securing the connector onto a surface.



Product no. / Details

■ PA66 = Polyamide 66

Product no.	Material / Color	Suitable models
6000589CC	PA66 / Black	THB389 • THS389

EXCLUSIVE LOCKING TOOL for THB389E • THS389E



Plug side installation



Socket side installation

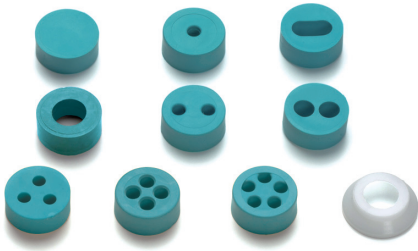
■ Exclusive Locking Tool for THB389E • THS389E

Product no. / Details

■ PA66 = Polyamide 66

Product no.	Material / Color	Suitable models
6000532KC	PA66 / Black	THB389E • THS389E - Panel mount side

SEALING INSERT for THA • THB • THS



- Optional sealing insert for THA209, THB387L, 387LE, 389, 389E, 390, 399Y, 400, 402T, 405, 406, THS389 and 389E.
(Not applicable to be used for THB381, 381E, 387, 387E, 391 and 392 series.)
- Recommended to be used to change the compatible wire diameter, or for installation of multiple wires.
- 6000087LF cap can be used to prevent the rubber bushing from protruding, as well as stabilizing the waterproof performance when using wire of diameter 7.0mm or smaller.

Product no. / Details

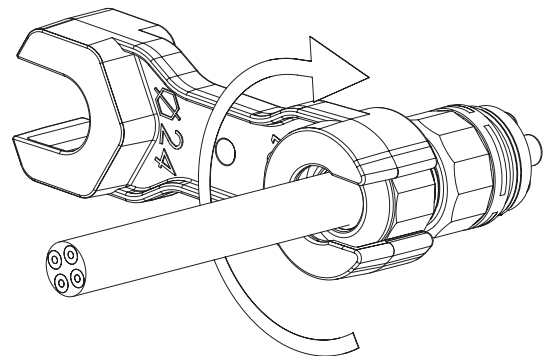
Product no.	Appearance	Cable range	Material	Pack of
600013700		Blind insert without hole	TPE	10
600012700		11mm x 5.5mm	TPE	10
600037000		Φ4.0 ~ Φ6.5mm	TPE • POM	10 each
604001100		Φ5.5 ~ Φ9.5mm Use fixing cap for cables sized Φ7.0mm or smaller	TPE • POM	10 each
600013600		Φ2.0 ~ Φ4.0mm	TPE • POM	10 each
600012500		Φ2.0 ~ Φ4.0mm	TPE • POM	10 each
600030600		Φ4.5 ~ Φ6.0mm	TPE	10
600012600		Φ2.0 ~ Φ4.0mm	TPE	10
600018200		Φ2.0 ~ Φ3.5mm	TPE	10
600022400		Φ2.5 ~ Φ3.5mm	TPE	10
6000087LF		Cap for cables sized Φ7.0mm or smaller	POM	10

■ 6000087LF cap cannot be used with 600030600 and 600022400

EXCLUSIVE TIGHTENING TOOL for THB • THS



How to use



- Dedicated locking tool for tightening of the cable gland cap.

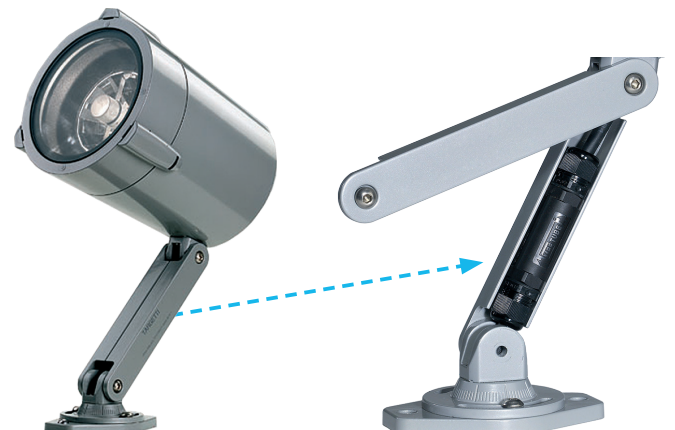
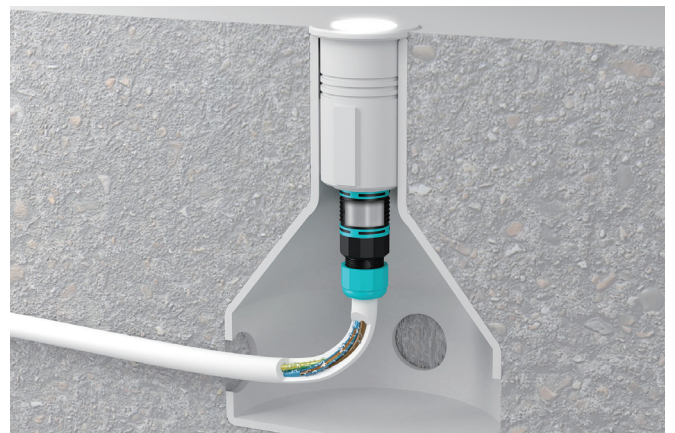
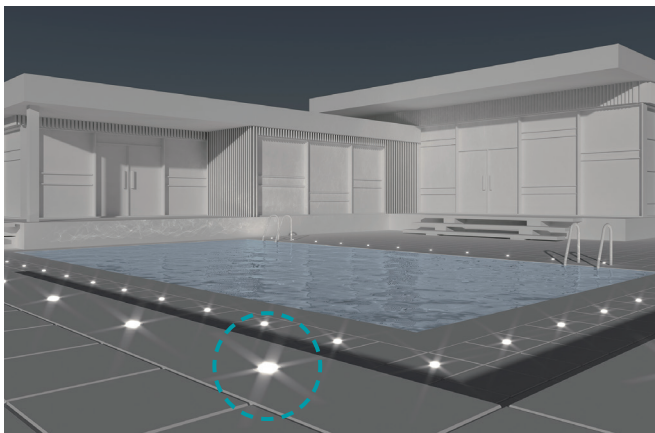
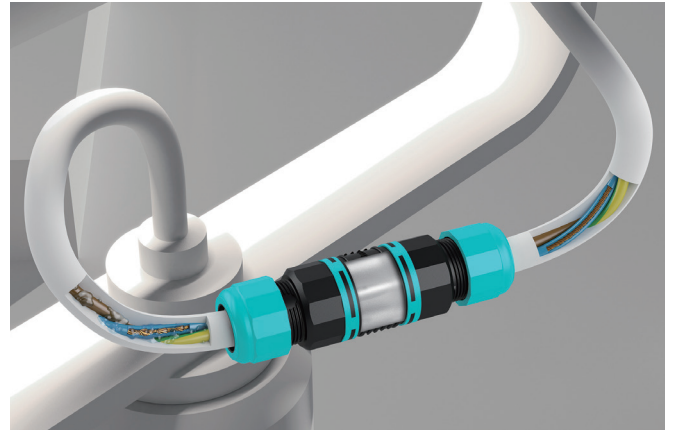
Product no. / Details

Product no.	Material / Color	Suitable models
6000337BC	PA66GF / Black	THB387 • 387E • 387L • 387LE • 389 • 389E • 390 • 390T • 391 • 392 • 399Y • 400 • 402T • 405 • 406 • THS389 • 389E

■ PA66GF = Glass fiber filled polyamide 66

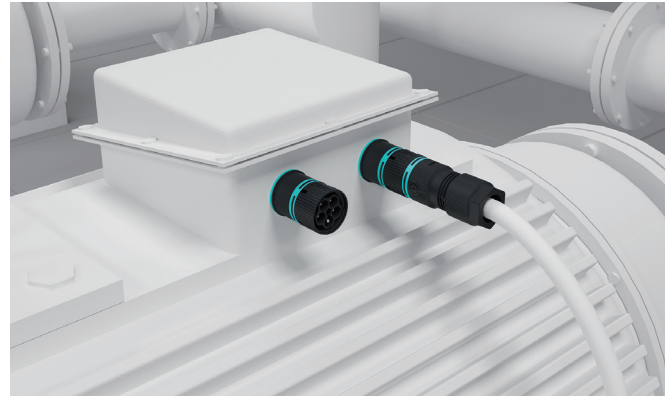
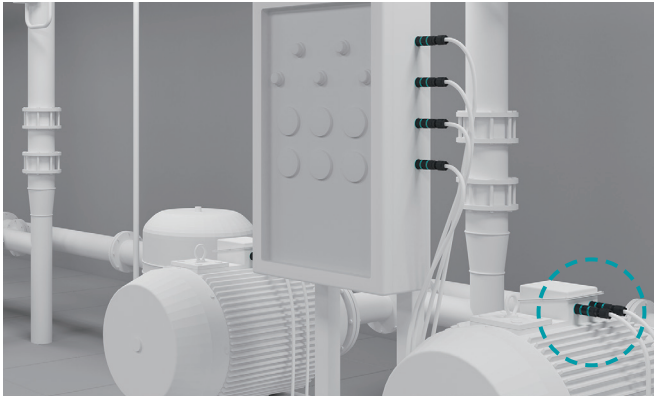
Application Example - Waterproof Connector

Outdoor LED Lighting Connection

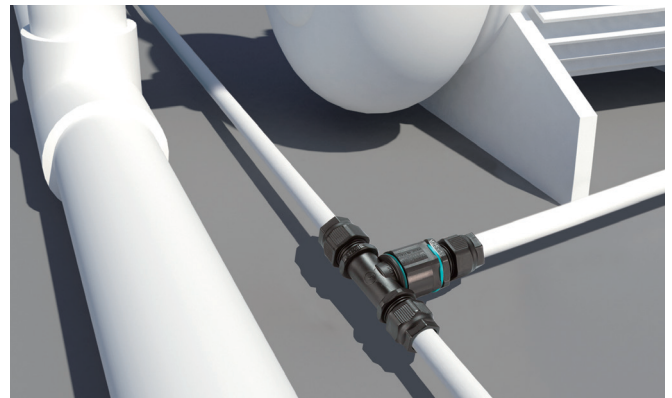
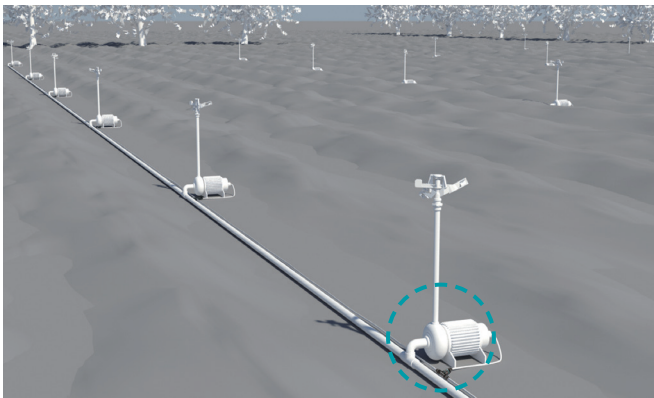


Application Example-1

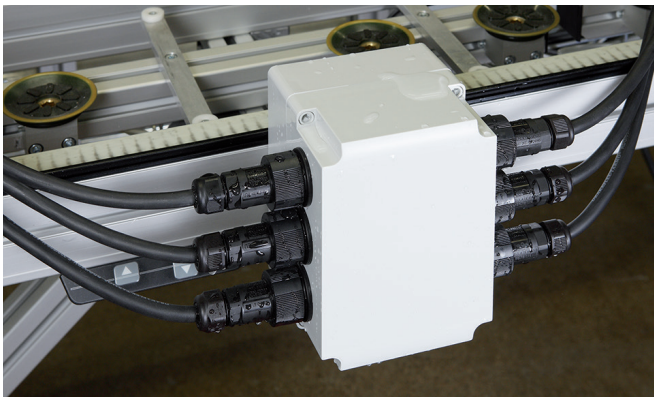
Industrial Motor Connection



Sprinkler System Connection



Power / Sensor Signal Relay in Factory Automation



Machinery



Circuit Breaker Connector



Underground • Underfloor Wiring

