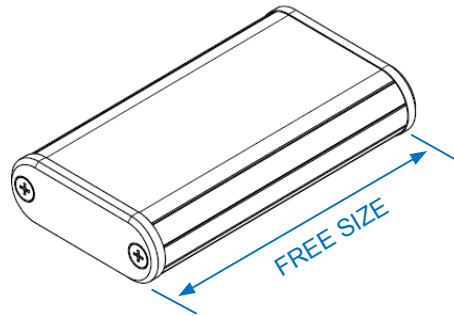
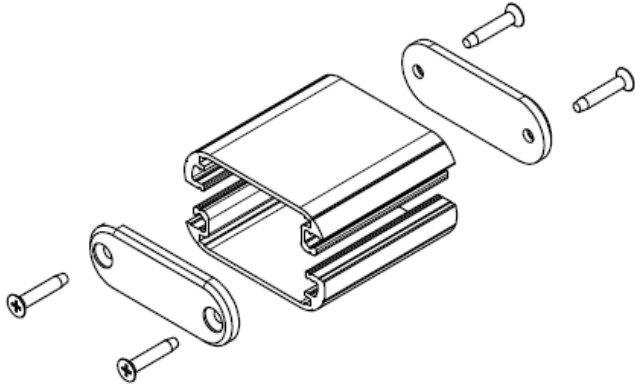


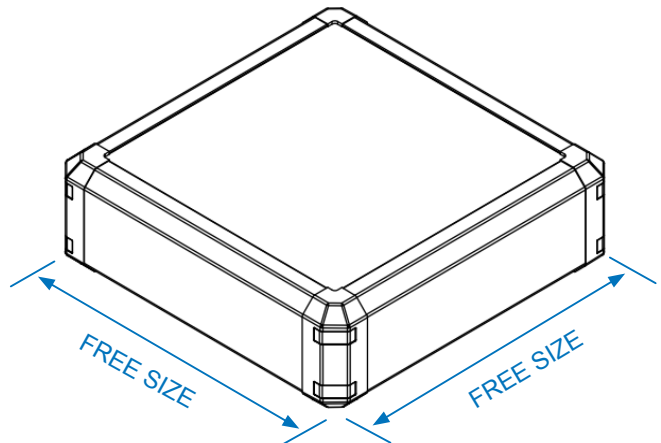
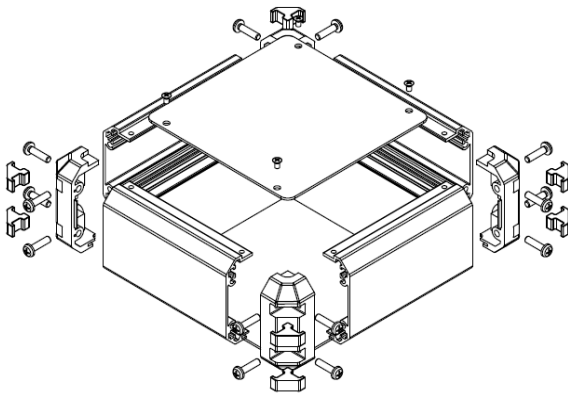
VARIETY OF CUSTOM SIZED ENCLOSURES

Extruded models are adjustable in extrusion length (depth) in 0.1mm or 1.0mm intervals.
Sheet-metal models are adjustable in W/D/H dimensions in 1.0mm intervals.

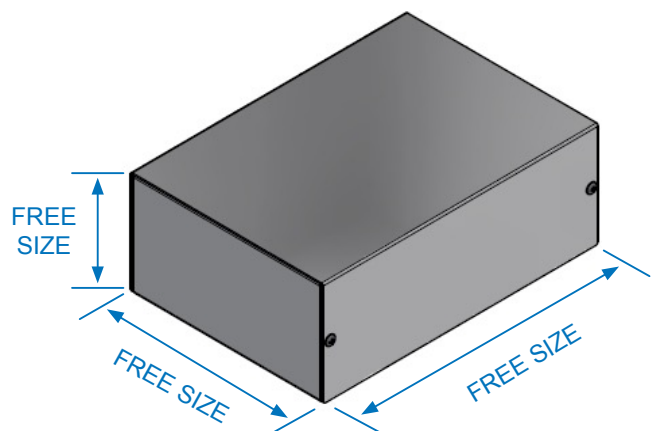
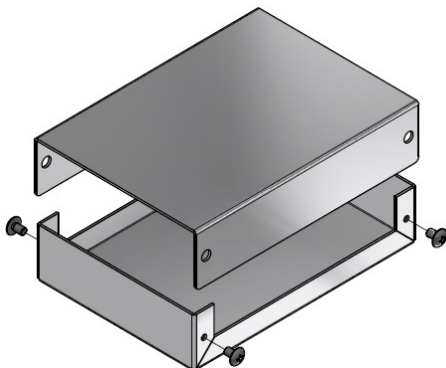
EXTRUDED ALUMINIUM MODEL



4 SIDE-EXTRUDED ALUMINIUM MODEL



SHEET METAL MODEL



More custom sized models are available.

https://www.takachi-enclosure.com/cat/flexible_size

INQUIRING CUSTOM SIZED ENCLOSURES

- 1 Navigate to the free-size product page you wish to inquire on our website and click on the button indicated by the → arrow.



Custom sized shock-proof design instrument enclosure.
Corner guards are designed to be both aesthetically pleasing, and impact resistant.

Selectable 22 different Width/Height profiles and specified length (depth) from 40 to 500mm in 1mm intervals.
16 different color combinations can be specified.

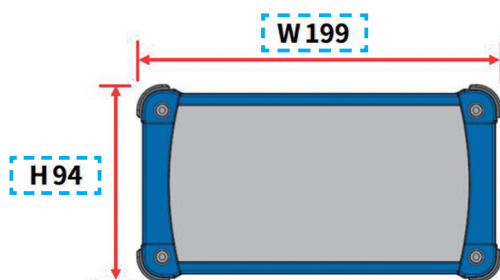


CUSTOM SIZE WEB QUOTATION	3D View - Silver/Navy	3D View - 16 color types
3D View - With tilt legs	Exploded view	Color code

■ If there is no "WEB QUOTATION" click button, please send us your inquiry from the "INQUIRY FORM" on the CONTACT tab on our website.

- 2 Go to the CUSTOM SIZE WEB QUOTATION page and enter your preferred dimensions.

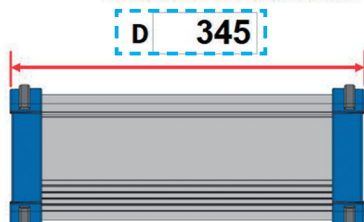
STEP1 Select required width / height.



Select	W	H	Select	W	H
<input type="checkbox"/>	69	34	<input type="checkbox"/>	151	81
<input type="checkbox"/>	69	44	<input type="checkbox"/>	151	101
<input type="checkbox"/>	69	59	<input type="checkbox"/>	199	56
<input type="checkbox"/>	89	39	<input type="checkbox"/>	199	74
<input type="checkbox"/>	89	49	<input checked="" type="checkbox"/>	199	94
<input type="checkbox"/>	89	64	<input type="checkbox"/>	199	119
<input type="checkbox"/>	116	41	<input type="checkbox"/>	244	64
<input type="checkbox"/>	116	56	<input type="checkbox"/>	244	89
<input type="checkbox"/>	116	71	<input type="checkbox"/>	244	114
<input type="checkbox"/>	151	46	<input type="checkbox"/>	300	90
<input type="checkbox"/>	151	61	<input type="checkbox"/>	300	140

STEP2 Specify size D(depth) ... Enter dimensions in 1mm intervals.

Available from 40 to 500mm



*NOTE: Specified size D(depth) ≠ available internal dimension

Available internal dimension = **D dimension - 20mm**

Please take caution when calculating required D dimension.

- 3 After entering the quantity, click on the button indicated by the → arrow to generate a Product No.

STEP4 Quantity ※Quantity can be specified up to 5 slots.

10 pcs

▶Add quantity



▶ GENERATE PRODUCT NO.

Product No. **EXPS199 – 94 – 345SN** ※Please use this model number when ordering.

- 4 After entering your details and the message in our INQUIRY FORM, click on the CONFIRM button.

STEP5 INQUIRY FORM

Fill out the inquiry form and send it. We will give you quotation by Email.
Inquiry from the country where the distributor is located will be answered by the distributor.

Fields marked with ★ are required

Product No.	EXPS199-94-345SN	Quantity ★	10
E-mail ★	jiro@takachi-el.co.jp		
Company ★	TAKACHI ELECTRONICS ENCLOSURE CO., LTD.		
Your name ★	<input type="radio"/> Mr. <input checked="" type="radio"/> Ms.	First name	Jiro
		Last name	Takachi
Country ★			
Message	I would like a quote for 10 pieces of EXPS199-94-345SN.		



▶ CONFIRM

Our privacy policy have been designed to ensure that personal information is not misused or used for purposes other than it is intended for.
[PRIVACY POLICY](#)

- 5 A TAKACHI sales representative will get in touch with you with a quote via e-mail.





SIMPLE ALUMINIUM SHEET METAL BOX with COVER



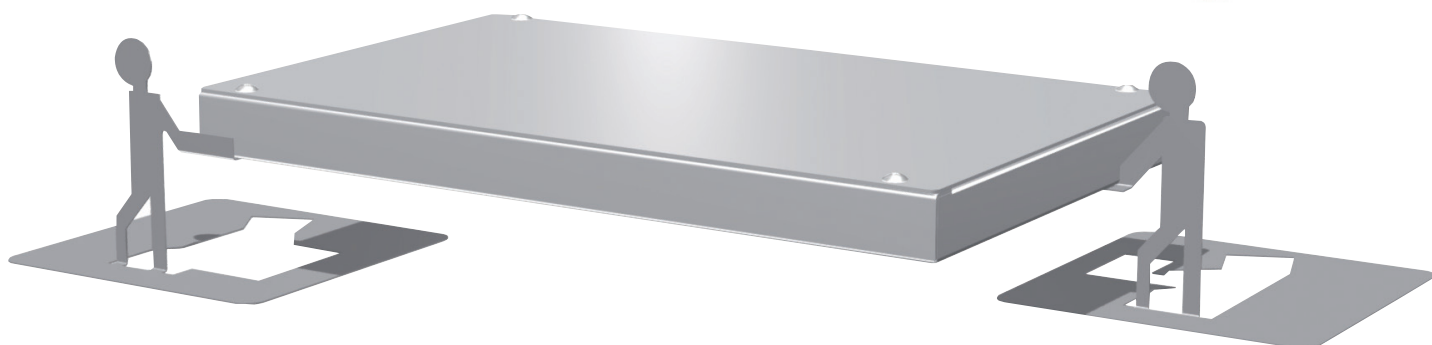
6 Additional Sizes

Low-cost lineup of chassis cases released!

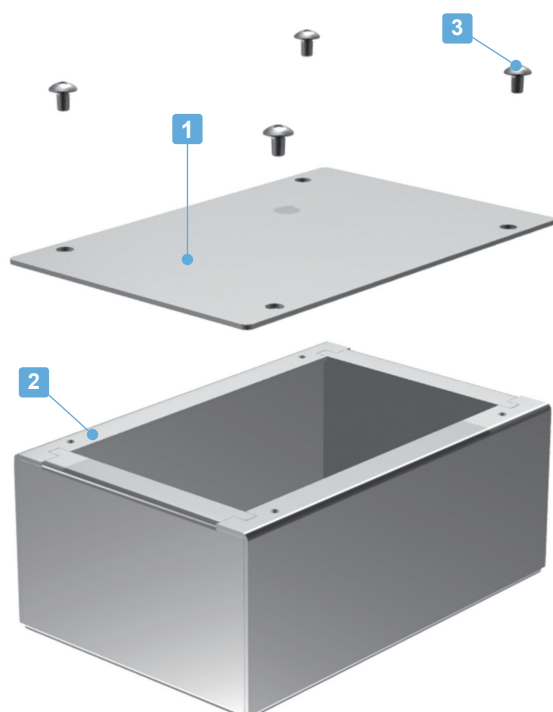
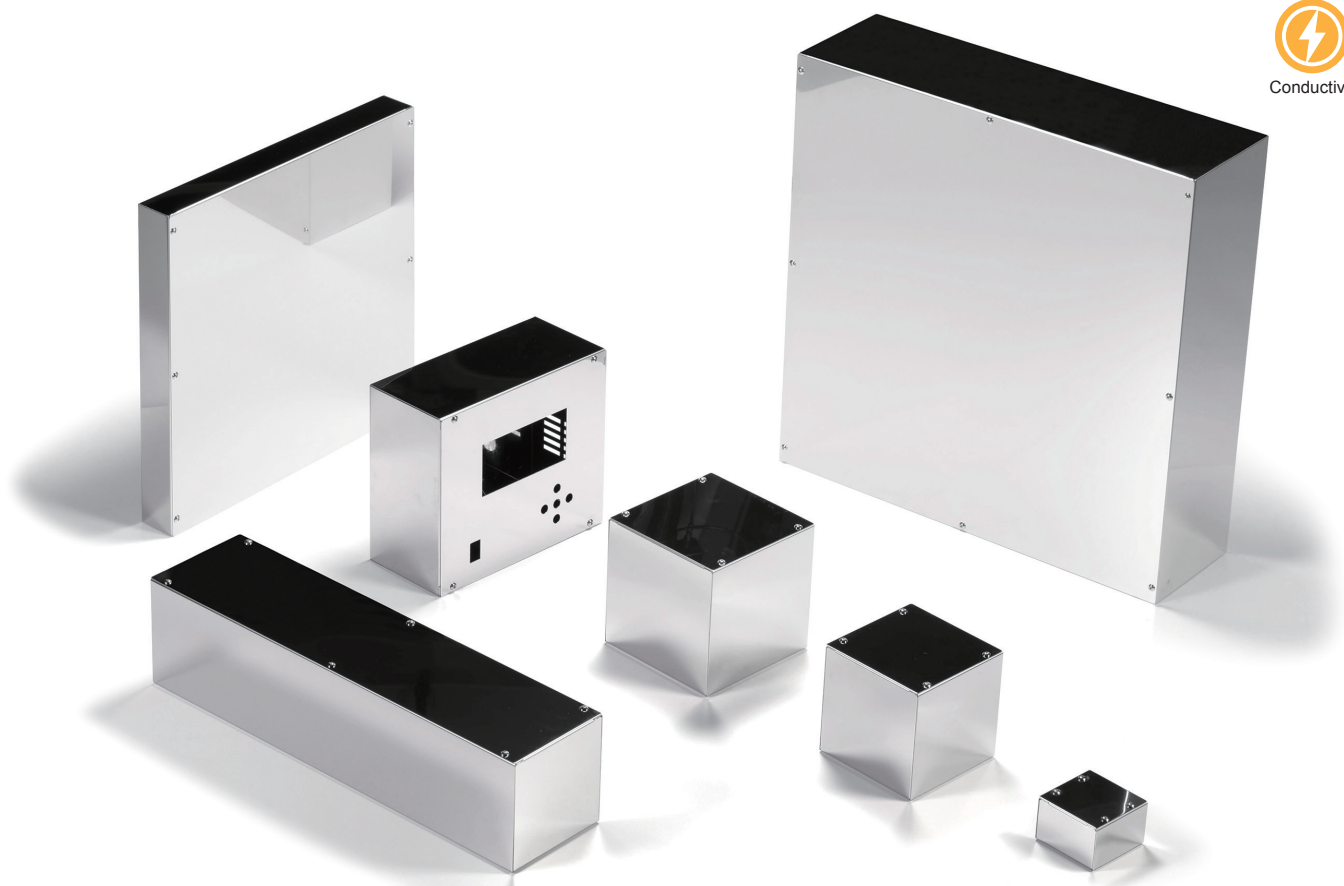


← Customizable Sizes Expanded →

CUSTOM SIZED ALUMINIUM BOX
CUSTOM SIZED STAINLESS STEEL BOX



**CASE BOX RACK & CUSTOM
TAKACHI ELECTRONICS ENCLOSURE CO., LTD.**



- Adjustable sizes available in 1mm intervals, with W and D dimensions from 60 ~ 400mm, and H dimension from 20 ~ 120mm.
- Detachable top cover allows easy assembly and maintenance access.
- Made of stainless steel (SUS304) for superior weather and corrosion resistance.
- Stainless steel (SUS304) allows the enclosure to be conductive.
- Best suited for the instruments located in medical facilities, food plant, or clean room.

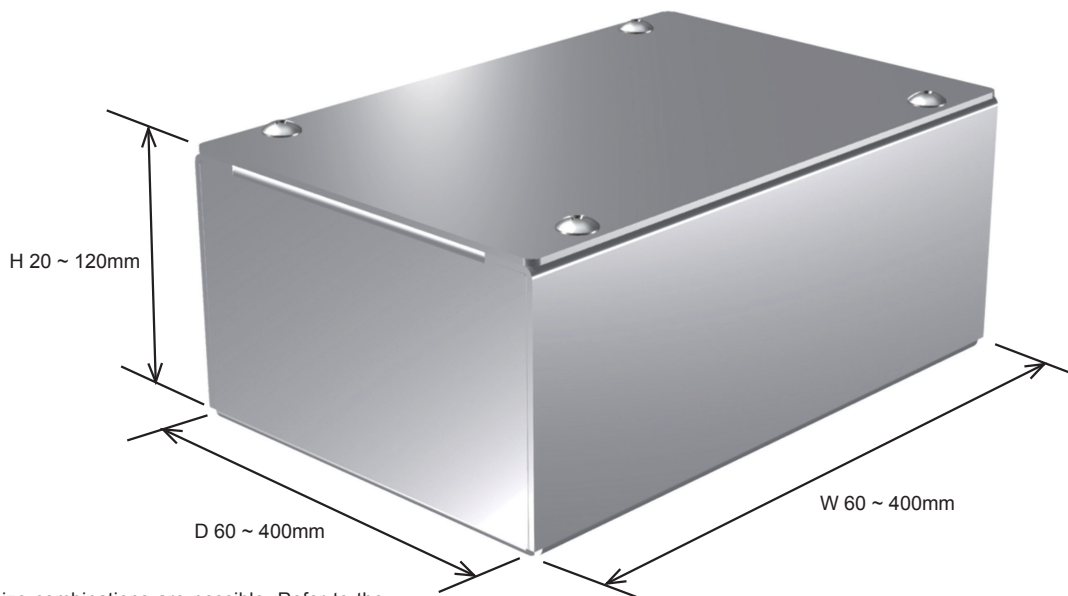
Components

No.	Part name	Pcs	Material	Color / Finish
1	Cover	1	Stainless steel SUS304 t = 0.8	Bright annealed
2	Base	1	Stainless steel SUS304 t = 0.8	Bright annealed
3	Screw (M3-5 truss head)	4 / 6 / 8	Stainless steel	Unfinished

■ Cover and Base are covered with a protection film on one side.

Dimensions

To select W, H and D dimensions in 1mm intervals.



Caution : Not all size combinations are possible. Refer to the chart on page TCS-3 for further details.
The width of the folded base part will differ depending on W and D dimensions.
See page TCS-3 ~ 4 for further details.

Product No.

To determine a product number, fill W, H and D in the following blank boxes.

[illegible]

Numbering example: W:250 x H:100 x D:300 ➡ **TCS250-100-300**

Lead Time

Custom Size Only
Custom Size + Hole Milling

7 business days (1 ~ 3 pcs)
8 business days (1 ~ 3 pcs)

Order Inquiry

For more information, contact us here at sales@takachi-el.co.jp

Accessories (Optional parts)



Rubber feet B series
See page Feet-1



Insert nut adhesive standoff AST series
See page 121

TCS Size Table

Refer to the table below for available dimensions.

W and D = 200mm or smaller : Folded area width = W8.5mm, D5.5mm

W or D = 201mm or larger : Folded area width = W10.0mm, D10.0mm

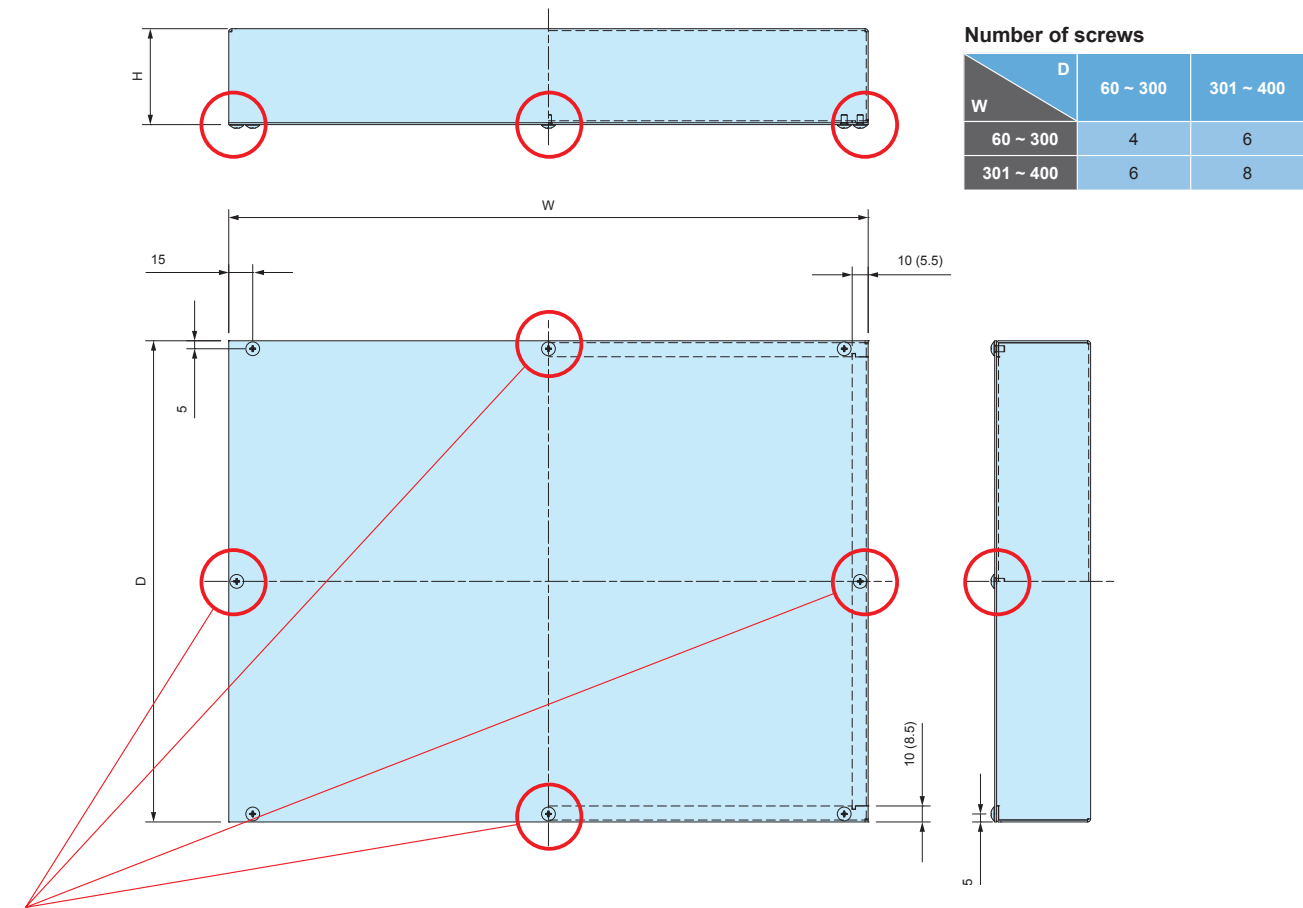
See TCS dimensions on page TCS-4 for further details.

■ 「—」 sizes are not available.

W	H	D	60 ~ 99	100 ~ 125	126 ~ 150	151 ~ 175	176 ~ 200	201 ~ 225	226 ~ 250	251 ~ 300	301 ~ 325	326 ~ 350	351 ~ 375	376 ~ 400
60 ~ 99	20 ~ 39	—	○	○	○	○	○	—	—	—	—	—	—	—
	40 ~ 50	—	○	○	○	○	○	○	○	○	○	○	○	○
	51 ~ 70	—	○	○	○	○	○	○	○	○	○	○	○	○
100 ~ 125	20 ~ 39	—	○	○	○	○	○	—	—	—	—	—	—	—
	40 ~ 50	—	○	○	○	○	○	○	○	○	○	○	○	○
	51 ~ 70	—	○	○	○	○	○	○	○	○	○	○	○	○
	71 ~ 100	—	—	○	○	○	○	○	○	○	○	○	○	○
	101 ~ 120	—	—	○	○	○	○	○	○	○	○	○	○	○
126 ~ 150	20 ~ 39	—	○	○	○	○	○	—	—	—	—	—	—	—
	40 ~ 50	—	○	○	○	○	○	○	○	○	○	○	○	○
	51 ~ 70	—	○	○	○	○	○	○	○	○	○	○	○	○
	71 ~ 100	—	—	○	○	○	○	○	○	○	○	○	○	○
	101 ~ 120	—	—	○	○	○	○	○	○	○	○	○	○	○
151 ~ 175	20 ~ 39	—	○	○	○	○	○	—	—	—	—	—	—	—
	40 ~ 50	—	○	○	○	○	○	○	○	○	○	○	○	○
	51 ~ 70	—	○	○	○	○	○	○	○	○	○	○	○	○
	71 ~ 100	—	—	○	○	○	○	○	○	○	○	○	○	○
	101 ~ 120	—	—	○	○	○	○	○	○	○	○	○	○	○
176 ~ 200	20 ~ 39	—	○	○	○	○	○	—	—	—	—	—	—	—
	40 ~ 50	—	○	○	○	○	○	○	○	○	○	○	○	○
	51 ~ 70	—	○	○	○	○	○	○	○	○	○	○	○	○
	71 ~ 100	—	—	○	○	○	○	○	○	○	○	○	○	○
	101 ~ 120	—	—	○	○	○	○	○	○	○	○	○	○	○
201 ~ 225	40 ~ 50	—	○	○	○	○	○	○	○	○	○	○	○	○
	51 ~ 70	—	○	○	○	○	○	○	○	○	○	○	○	○
	71 ~ 100	—	—	○	○	○	○	○	○	○	○	○	○	○
	101 ~ 120	—	—	○	○	○	○	○	○	○	○	○	○	○
226 ~ 250	40 ~ 50	—	○	○	○	○	○	○	○	○	○	○	○	○
	51 ~ 70	—	○	○	○	○	○	○	○	○	○	○	○	○
	71 ~ 100	—	—	○	○	○	○	○	○	○	○	○	○	○
	101 ~ 120	—	—	○	○	○	○	○	○	○	○	○	○	○
251 ~ 300	40 ~ 50	—	○	○	○	○	○	○	○	○	○	○	○	○
	51 ~ 70	—	○	○	○	○	○	○	○	○	○	○	○	○
	71 ~ 100	—	—	○	○	○	○	○	○	○	○	○	○	○
	101 ~ 120	—	—	○	○	○	○	○	○	○	○	○	○	○
301 ~ 325	40 ~ 50	—	○	○	○	○	○	○	○	○	○	○	○	○
	51 ~ 70	—	○	○	○	○	○	○	○	○	○	○	○	○
	71 ~ 100	—	—	○	○	○	○	○	○	○	○	○	○	○
	101 ~ 120	—	—	○	○	○	○	○	○	○	○	○	○	○
326 ~ 350	40 ~ 50	—	○	○	○	○	○	○	○	○	○	○	○	○
	51 ~ 70	—	○	○	○	○	○	○	○	○	○	○	○	○
	71 ~ 100	—	—	○	○	○	○	○	○	○	○	○	○	○
	101 ~ 120	—	—	○	○	○	○	○	○	○	○	○	○	○
351 ~ 375	40 ~ 50	—	○	○	○	○	○	○	○	○	○	○	○	○
	51 ~ 70	—	○	○	○	○	○	○	○	○	○	○	○	○
	71 ~ 100	—	—	○	○	○	○	○	○	○	○	○	○	○
	101 ~ 120	—	—	○	○	○	○	○	○	○	○	○	○	○
376 ~ 400	40 ~ 50	—	○	○	○	○	○	○	○	○	○	○	○	○
	51 ~ 70	—	○	○	○	○	○	○	○	○	○	○	○	○
	71 ~ 100	—	—	○	○	○	○	○	○	○	○	○	○	○
	101 ~ 120	—	—	○	○	○	○	○	○	○	○	○	○	○

TCS dimensions

■ DXF/DWG/PDF drawings available on our website.



*Note:
An additional set of screw holes (on each corresponding side) will be required for assembly if W or D dimension is 301mm or larger.
Values within () are for W / D dimensions of 200 mm or smaller.

CUSTOMIZED EXAMPLE

LASER CUTTING
Lead Time : 8 business days



LASER CUTTING + INKJET PRINTING
Lead Time : 11 business days

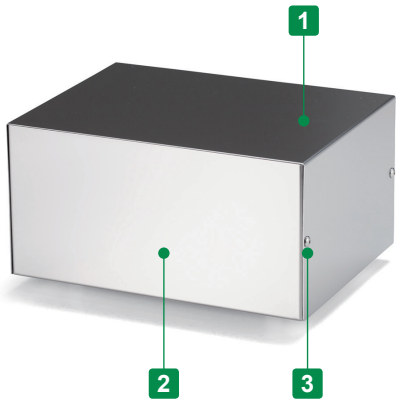


MBS SERIES

CUSTOM SIZED STAINLESS STEEL ENCLOSURE



- Adjustable sizes available in 1mm intervals, with W dimensions from 50 ~ 500mm, D dimensions from 50 ~ 500mm, and H dimensions from 20 ~ 250mm.
- SUS304 stainless steel allows the enclosure to be conductive.



CUSTOMIZED EXAMPLE

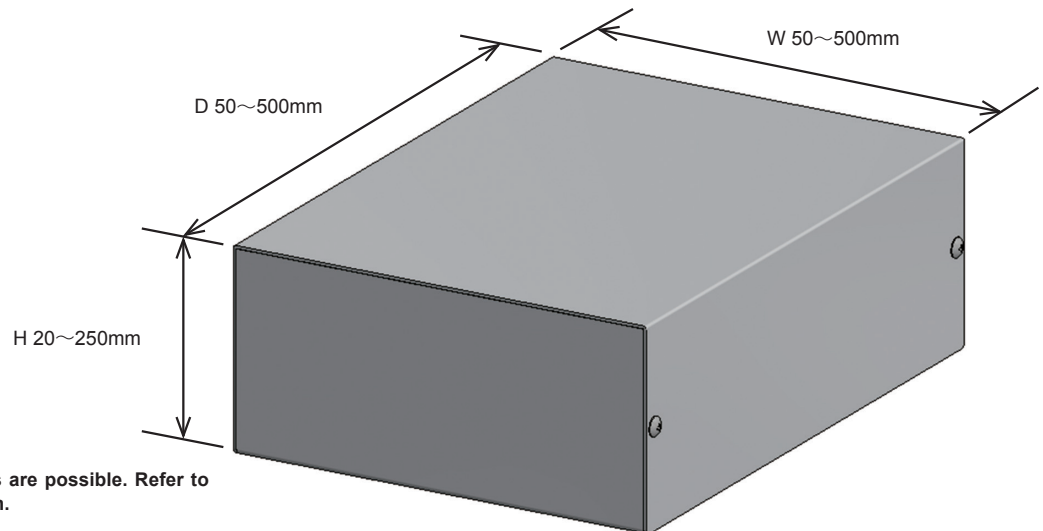


Components

No.	Part name	Pcs	Material	Color / Finish
1	Cover	1	Stainless steel SUS304	Bright annealed (BA)
2	Base	1	Stainless steel SUS304	Bright annealed (BA)
3	Screw (Truss M3-5)	4 or 6	Stainless steel	Unfinished

1 Specify Dimensions

Specify dimensions in 1mm intervals.



Caution : Not all size combinations are possible. Refer to chart for more information.

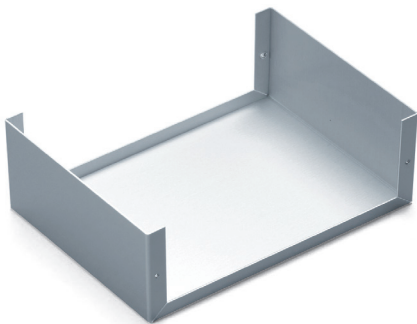
■ Panel thickness and base types vary by W / H / D dimensions.

Refer to the chart on page MBS-3 for A08, B10 or B12 type selection by W, H & D dimensions.

Base Type A

[A08] Type

W : 200 • H : 100 • D : 500 or smaller
Type A : Standard • Panel thickness : 0.8mm



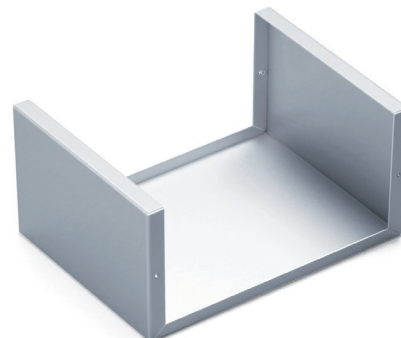
Base Type B

[B10] Type

W : 300 • H : 225 • D : 400 or smaller
Type B : Reinforced • Panel thickness : 1.0mm

[B12] Type

W : 500 • H : 250 • D : 500 or smaller
Type B : Reinforced • Panel thickness : 1.2mm



Confirm Product No.

Confirm an assigned product number in the following order format as below.

Product no. MBS

122	-	70	-	130		A		08
W		H		D		Base type		Panel thickness

Example : W = 122 mm, H = 70 mm, D = 130 mm, A base type in panel thickness of 0.8mm.

Lead time

Custom Size Only
Custom Size + Hole Milling

9 business days (1 ~ 3 pcs)
10 business days (1 ~ 3 pcs)

Order Inquiry

For more information, contact us here at sales@takachi-el.co.jp

MBS Type Chart

Refer to the below chart for A08, B10 or B12 type selection by W, H & D dimensions.

[A08] Type

Standard • Panel thickness : 0.8mm

[B10] Type

Reinforced • Panel thickness : 1.0mm

[B12] Type

Reinforced • Panel thickness : 1.2mm

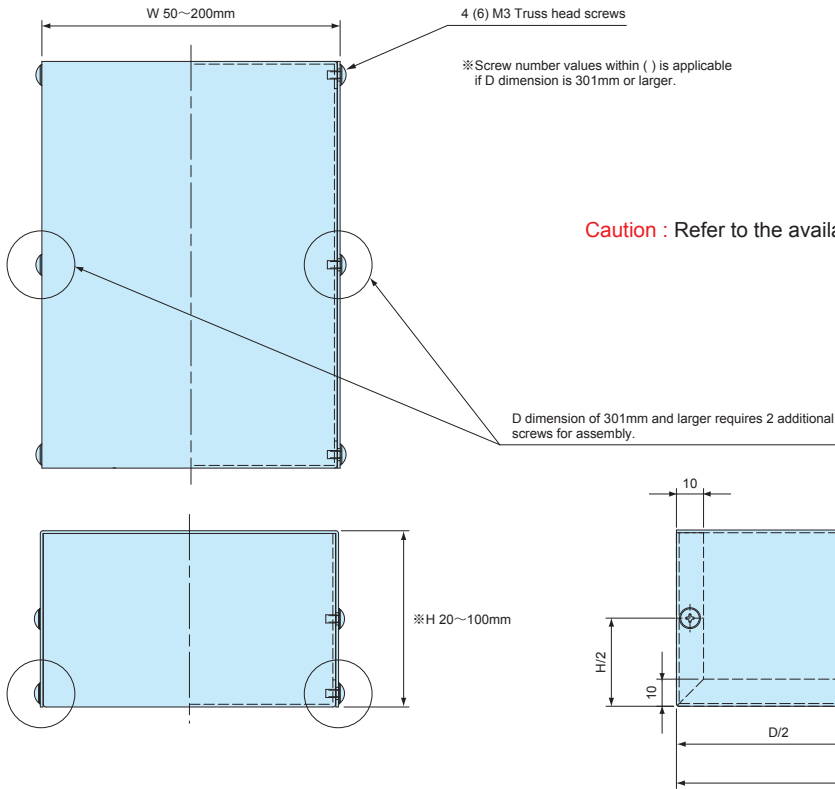
■ [—] sizes are not available.

W	H	D	4 screw fixing points										6 screw fixing points							
			50~79	80~99	100~125	126~150	151~175	176~200	201~225	226~250	251~275	276~300	301~325	326~350	351~375	376~400	401~425	426~450	451~475	476~500
50~99	20~35	A08	A08	A08	A08	A08	A08	A08	A08	A08	A08	A08	A08	A08	A08	A08	A08	A08	A08	A08
	36~50	—	A08	A08	A08	A08	A08	A08	A08	A08	A08	A08	B10	B10	B10	B10	B12	B12	B12	B12
100~150	20~50	A08	A08	A08	A08	A08	A08	A08	B10	B10	B10	B10	B12	B12	B12	B12	B12	B12	B12	B12
	51~75	—	—	A08	A08	A08	A08	A08	B10	B10	B10	B10	B12	B12	B12	B12	B12	B12	B12	B12
	76~100	—	—	—	A08	A08	A08	A08	B10	B10	B10	B10	B12	B12	B12	B12	B12	B12	B12	B12
151~200	20~50	—	A08	A08	A08	A08	A08	A08	B10	B10	B10	B10	B12	B12	B12	B12	B12	B12	B12	B12
	51~75	—	—	A08	A08	A08	A08	A08	B10	B10	B10	B10	B12	B12	B12	B12	B12	B12	B12	B12
	76~100	—	—	—	B10	B10	B10	B10	B10	B10	B10	B10	B12	B12	B12	B12	B12	B12	B12	B12
	101~125	—	—	—	—	B10	B10	B10	B10	B10	B10	B10	B12	B12	B12	B12	B12	B12	B12	B12
	126~150	—	—	—	—	—	B10	B10	B10	B10	B10	B10	B12	B12	B12	B12	B12	B12	B12	B12
201~250	20~50	—	B10	B10	B10	B10	B10	B10	B10	B10	B10	B10	B12	B12	B12	B12	B12	B12	B12	B12
	51~75	—	—	B10	B10	B10	B10	B10	B10	B10	B10	B10	B12	B12	B12	B12	B12	B12	B12	B12
	76~100	—	—	—	B10	B10	B10	B10	B10	B10	B10	B10	B12	B12	B12	B12	B12	B12	B12	B12
	101~125	—	—	—	—	B10	B10	B10	B10	B10	B10	B10	B12	B12	B12	B12	B12	B12	B12	B12
	126~150	—	—	—	—	—	B10	B10	B10	B10	B10	B10	B12	B12	B12	B12	B12	B12	B12	B12
	151~175	—	—	—	—	—	—	B10	B10	B10	B10	B10	B12	B12	B12	B12	B12	B12	B12	B12
251~300	176~200	—	—	—	—	—	—	—	B10	B10	B10	B10	B12	B12	B12	B12	B12	B12	B12	B12
	20~50	—	B10	B10	B10	B10	B10	B10	B10	B10	B10	B10	B12	B12	B12	B12	B12	B12	B12	B12
	51~75	—	—	B10	B10	B10	B10	B10	B10	B10	B10	B10	B12	B12	B12	B12	B12	B12	B12	B12
	76~100	—	—	—	B10	B10	B10	B10	B10	B10	B10	B10	B12	B12	B12	B12	B12	B12	B12	B12
	101~125	—	—	—	—	B10	B10	B10	B10	B10	B10	B10	B12	B12	B12	B12	B12	B12	B12	B12
	126~150	—	—	—	—	—	B10	B10	B10	B10	B10	B10	B12	B12	B12	B12	B12	B12	B12	B12
	151~175	—	—	—	—	—	—	B10	B10	B10	B10	B10	B12	B12	B12	B12	B12	B12	B12	B12
301~350	176~200	—	—	—	—	—	—	—	B10	B10	B10	B10	B12	B12	B12	B12	B12	B12	B12	B12
	201~225	—	—	—	—	—	—	—	—	B10	B10	B10	B12	B12	B12	B12	B12	B12	B12	B12
	226~250	—	—	—	—	—	—	—	—	—	B10	B10	B12	B12	B12	B12	B12	B12	B12	B12
	20~50	—	—	—	B12	B12	B12	B12	B12	B12	B12	B12	B12	B12	B12	B12	B12	B12	B12	B12
	51~75	—	—	—	B12	B12	B12	B12	B12	B12	B12	B12	B12	B12	B12	B12	B12	B12	B12	B12
	76~100	—	—	—	—	B12	B12	B12	B12	B12	B12	B12	B12	B12	B12	B12	B12	B12	B12	B12
	101~125	—	—	—	—	B12	B12	B12	B12	B12	B12	B12	B12	B12	B12	B12	B12	B12	B12	B12
	126~150	—	—	—	—	—	B12	B12	B12	B12	B12	B12	B12	B12	B12	B12	B12	B12	B12	B12
351~400	151~175	—	—	—	—	—	—	B12	B12	B12	B12	B12	B12	B12	B12	B12	B12	B12	B12	B12
	176~200	—	—	—	—	—	—	—	B12	B12	B12	B12	B12	B12	B12	B12	B12	B12	B12	B12
	201~225	—	—	—	—	—	—	—	—	B12	B12	B12	B12	B12	B12	B12	B12	B12	B12	B12
	226~250	—	—	—	—	—	—	—	—	—	B12	B12	B12	B12	B12	B12	B12	B12	B12	B12
	20~50	—	—	—	B12	B12	B12	B12	B12	B12	B12	B12	B12	B12	B12	B12	B12	B12	B12	B12
	51~75	—	—	—	B12	B12	B12	B12	B12	B12	B12	B12	B12	B12	B12	B12	B12	B12	B12	B12
	76~100	—	—	—	—	B12	B12	B12	B12	B12	B12	B12	B12	B12	B12	B12	B12	B12	B12	B12
	101~125	—	—	—	—	B12	B12	B12	B12	B12	B12	B12	B12	B12	B12	B12	B12	B12	B12	B12
401~450	126~150	—	—	—	—	—	B12	B12	B12	B12	B12	B12	B12	B12	B12	B12	B12	B12	B12	B12
	151~175	—	—	—	—	—	—	B12	B12	B12	B12	B12	B12	B12	B12	B12	B12	B12	B12	B12
	176~200	—	—	—	—	—	—	—	B12	B12	B12	B12	B12	B12	B12	B12	B12	B12	B12	B12
	201~225	—	—	—	—	—	—	—	—	B12	B12	B12	B12	B12	B12	B12	B12	B12	B12	B12
	226~250	—	—	—	—	—	—	—	—	—	B12	B12	B12	B12	B12	B12	B12	B12	B12	B12
	20~50	—	—	—	B12	B12	B12	B12	B12	B12	B12	B12	B12	B12	B12	B12	B12	B12	B12	B12
	51~75	—	—	—	B12	B12	B12	B12	B12	B12	B12	B12	B12	B12	B12	B12	B12	B12	B12	B12
	76~100	—	—	—	—	B12	B12	B12	B12	B12	B12	B12	B12	B12	B12	B12	B12	B12	B12	B12
451~500	101~125	—	—	—	—	B12	B12	B12	B12	B12	B12	B12	B12	B12	B12	B12	B12	B12	B12	B12
	126~150	—	—	—	—	—	B12	B12	B12	B12	B12	B12	B12	B12	B12	B12	B12	B12	B12	B12
	151~175	—	—	—	—	—	—	B12	B12	B12	B12	B12	B12	B12	B12	B12	B12	B12	B12	B12
	176~200	—	—	—	—	—	—	—	B12	B12	B12	B12	B12	B12	B12	B12	B12	B12	B12	B12
	201~225	—	—	—	—	—	—	—	—	B12	B12	B12	B12	B12	B12	B12	B12	B12	B12	B12
	226~250	—	—	—	—	—	—	—	—	—	B12	B12	B12	B12	B12	B12	B12	B12	B12	B12
	20~50	—	—	—	B12	B12	B12	B12	B12	B12	B12	B12	B12	B12	B12	B12	B12	B12	B12	B12
	51~75	—	—	—	B12	B12	B12	B12	B12	B12	B12	B12	B12	B12	B12	B12	B12	B12	B12	B12

MBS dimensions

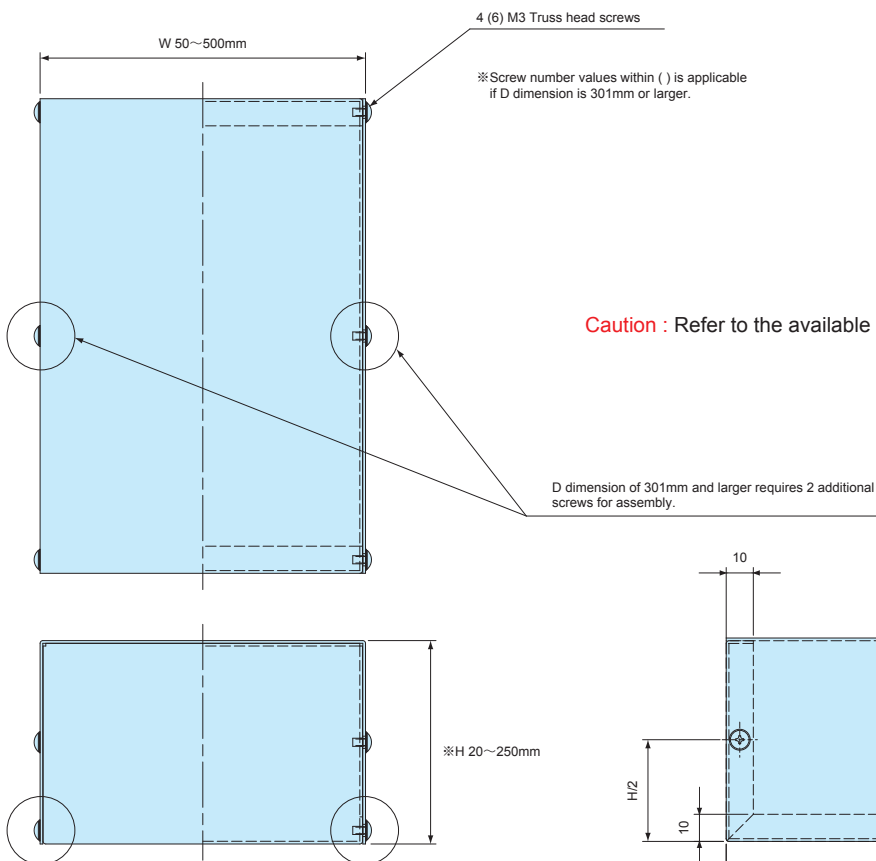
[A08] Type

Standard • Panel thickness : 0.8mm



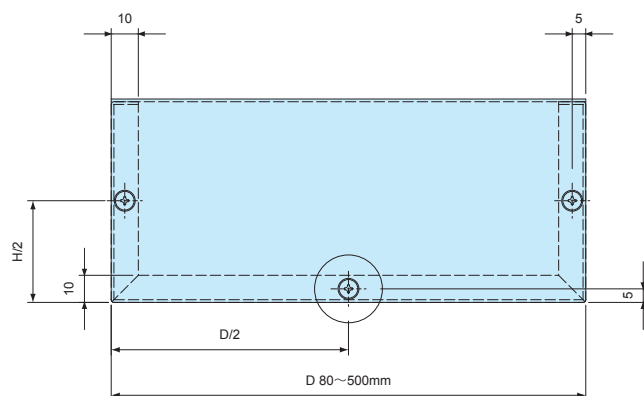
[B10] Type

Reinforced • Panel thickness : 1.0mm



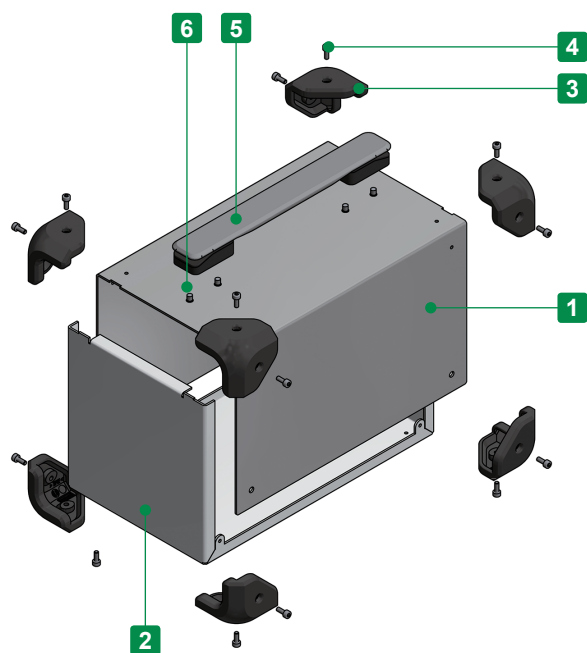
[B12] Type

Reinforced • Panel thickness : 1.2mm

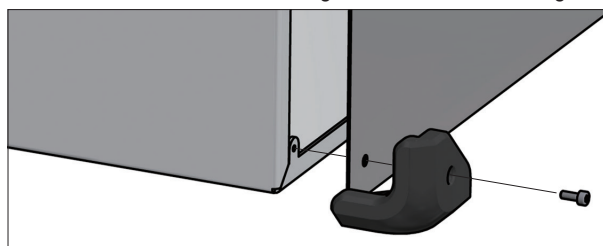




Conductive



- Adjustable sizes available in 1mm intervals, with W dimension from 150 ~ 500mm, D dimension from 150 ~ 400mm, and H dimension from 80 ~ 250mm.
- Custom sized stainless steel case with shockproof and anti-slip elastomer corner guards.
- Corner guards are available in 4 different color variations.
- Customizable with, and without carrying handles.
- SUS304 stainless steel allows the enclosure to be conductive.
- Stainless steel case and corner guard with screw fastening.



Components

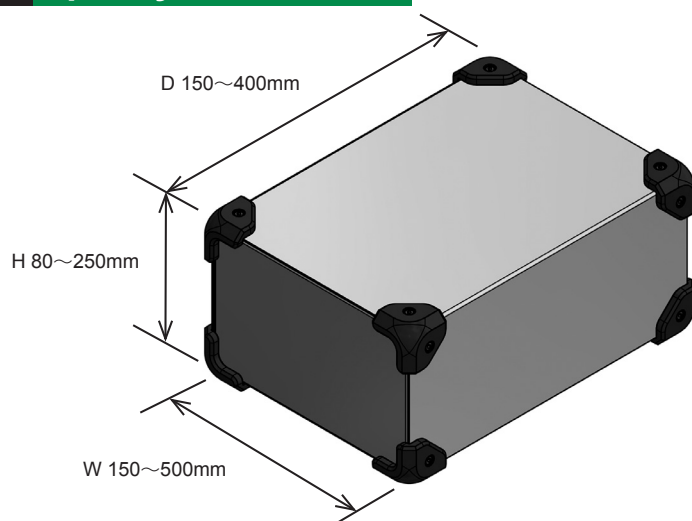
No.	Part name	Pcs	Material	Color / Finish
1	Top Cover	1	Stainless steel SUS304	Bright annealed (BA)
2	Base	1	Stainless steel SUS304	Bright annealed (BA)
3	Corner guard	8	TPE	Black • Gray • Navy • Red
4	Case / Corner guard screw (Hexagonal M4-8)	16 / 18 / 20	Stainless steel	Unfinished
5	Carrying handle	1	PU • PA6 • ABS • Steel	Black • Gray
6	Carrying handle screw (M5-8)	4	Steel	Trivalent chromate

■ Hexagonal wrench included.

■ No. 5 and 6 are available for carrying handle types only.

1 Specify Dimensions

Specify dimensions in 1mm intervals.



Caution

- W, H and D dimensions are external dimensions of stainless steel case only.
(Exclude corner guard dimensions)
- Refer to the chart on page MCGS-3 for available dimensions.
- Carrying handle is set to the center of top face.
(Carrying handle is not available for D length of 224mm and smaller.)

2 Select Color Type

Code	B Black	G Gray	N Navy	R Red
Color				

3 Select Handle Type

- Carrying handle model is not available for D length of 224mm and smaller.

Black handle [B]



Gray handle [G]



No handle [N]



Confirm Product No.

Confirm an assigned product number in the following order format as below.

Product no. MCGS

- - -
 W H D Color code Handle Type

Example : W = 222 mm, H = 111 mm, D = 333 mm, Red color Corner Guard with Black handle

MCGS 222 - 111 - 333 R - B

Lead time

Custom Size Only
Custom Size + Hole Milling

9 business days (1 ~ 10 pcs)
10 business days (1 ~ 10 pcs)

Order Inquiry

For more information, contact us here at sales@takachi-el.co.jp

MCGS Size Chart

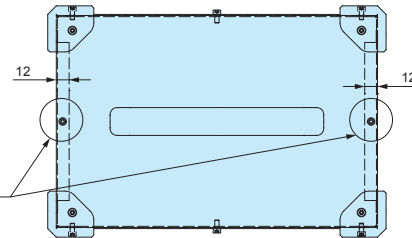
Refer to the below chart for available sizes.

■ [—] sizes are not available.

■ Models with carrying handle, and W dimension of 200mm or larger requires 2 additional screws for assembly.

W	H	D	16 screw fixing points						18 screw fixing points			
			150~174	175~199	200~224	225~249	250~274	275~299	300~324	325~349	350~374	375~400
150~199	80~99	100~124	○	○	○	○	○	○	○	○	○	○
		125~149	○	○	○	○	○	○	○	○	○	○
200~249	80~99	100~124	○	○	○	○	○	○	○	○	○	○
		125~149	○	○	○	○	○	○	○	○	○	○
		150~174	—	—	○	○	○	○	○	○	○	○
		175~199	—	—	—	○	○	○	○	○	○	○
		200~224	—	—	—	—	○	○	○	○	○	○
250~299	80~99	100~124	○	○	○	○	○	○	○	○	○	○
		125~149	○	○	○	○	○	○	○	○	○	○
		150~174	—	—	○	○	○	○	○	○	○	○
		175~199	—	—	—	○	○	○	○	○	○	○
		200~224	—	—	—	—	○	○	○	○	○	○
		225~250	—	—	—	—	—	○	○	○	○	○
300~349	80~99	100~124	○	○	○	○	○	○	○	○	○	○
		125~149	○	○	○	○	○	○	○	○	○	○
		150~174	—	—	○	○	○	○	○	○	○	○
		175~199	—	—	—	○	○	○	○	○	○	○
		200~224	—	—	—	—	○	○	○	○	○	○
		225~250	—	—	—	—	—	○	○	○	○	○
		250~274	—	—	—	—	—	○	○	○	○	○
350~399	80~99	100~124	○	○	○	○	○	○	○	○	○	○
		125~149	○	○	○	○	○	○	○	○	○	○
		150~174	—	—	○	○	○	○	○	○	○	○
		175~199	—	—	—	○	○	○	○	○	○	○
		200~224	—	—	—	—	○	○	○	○	○	○
		225~250	—	—	—	—	—	○	○	○	○	○
		250~274	—	—	—	—	—	○	○	○	○	○
400~449	80~99	100~124	○	○	○	○	○	○	○	○	○	○
		125~149	○	○	○	○	○	○	○	○	○	○
		150~174	—	—	○	○	○	○	○	○	○	○
		175~199	—	—	—	○	○	○	○	○	○	○
		200~224	—	—	—	—	○	○	○	○	○	○
		225~250	—	—	—	—	—	○	○	○	○	○
		250~274	—	—	—	—	—	○	○	○	○	○
450~500	80~99	100~124	○	○	○	○	○	○	○	○	○	○
		125~149	○	○	○	○	○	○	○	○	○	○
		150~174	—	—	○	○	○	○	○	○	○	○
		175~199	—	—	—	○	○	○	○	○	○	○
		200~224	—	—	—	—	○	○	○	○	○	○
		225~250	—	—	—	—	—	○	○	○	○	○
		250~274	—	—	—	—	—	○	○	○	○	○

■ Carrying handle model is not available for D length of 224mm and smaller.

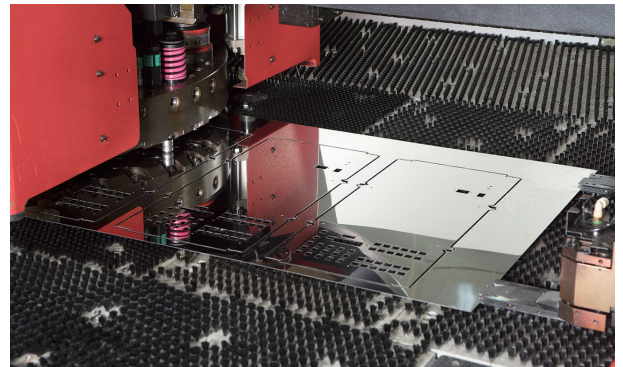


Technical drawing of a rectangular plate with the following dimensions and features:

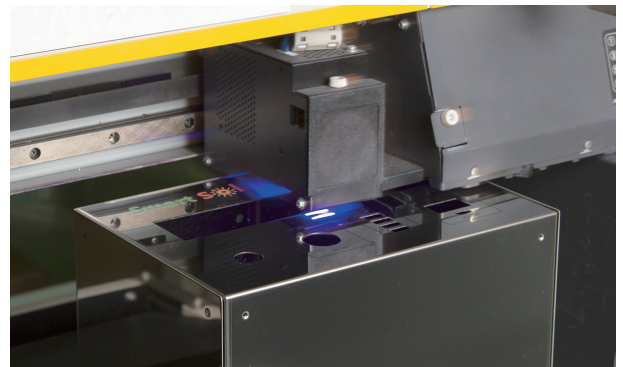
- Overall width: 200
- Overall height: 100
- Top flange width: 43
- Bottom flange width: 43
- Left flange width: 10
- Right flange width: 10
- Central hole diameter: $\varnothing 70\text{mm}$
- Distance from bottom edge to center of hole: 12
- Distance from left edge to center of hole: $D - 150 \sim 400\text{mm}$
- Overall distance from left edge to center of hole: $D + 16$

CUSTOMIZATION EXAMPLE

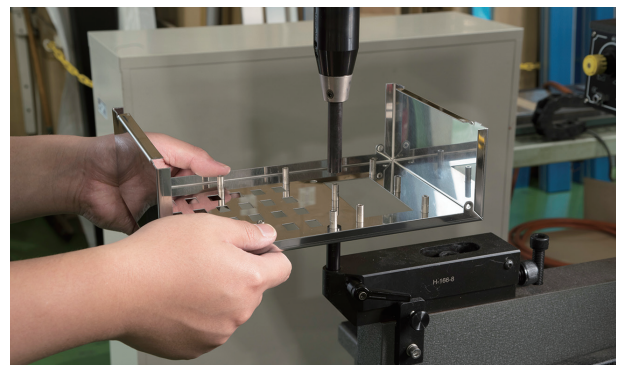
PUNCH PRESS



INKJET PRINTING



SELF CLINCHING STANDOFF

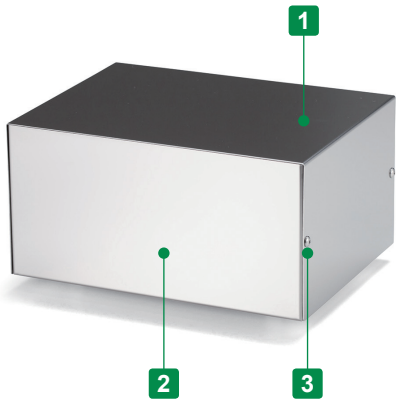


MBS SERIES

CUSTOM SIZED STAINLESS STEEL ENCLOSURE



- Adjustable sizes available in 1mm intervals, with W dimensions from 50 ~ 500mm, D dimensions from 50 ~ 500mm, and H dimensions from 20 ~ 250mm.
- SUS304 stainless steel allows the enclosure to be conductive.



CUSTOMIZED EXAMPLE

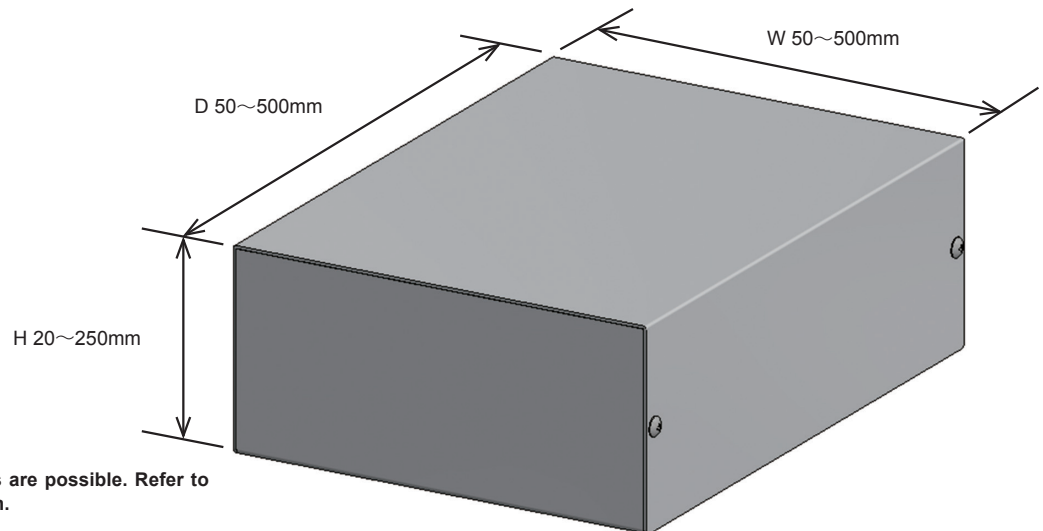


Components

No.	Part name	Pcs	Material	Color / Finish
1	Cover	1	Stainless steel SUS304	Bright annealed (BA)
2	Base	1	Stainless steel SUS304	Bright annealed (BA)
3	Screw (Truss M3-5)	4 or 6	Stainless steel	Unfinished

1 Specify Dimensions

Specify dimensions in 1mm intervals.



Caution : Not all size combinations are possible. Refer to chart for more information.

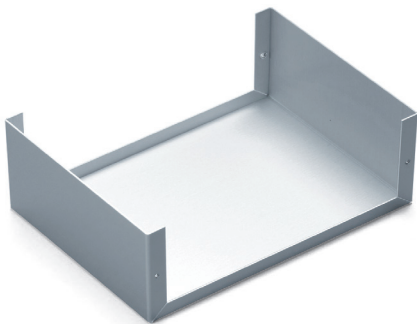
■ Panel thickness and base types vary by W / H / D dimensions.

Refer to the chart on page MBS-3 for A08, B10 or B12 type selection by W, H & D dimensions.

Base Type A

[A08] Type

W : 200 • H : 100 • D : 500 or smaller
Type A : Standard • Panel thickness : 0.8mm



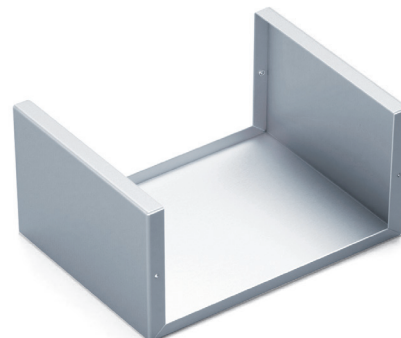
Base Type B

[B10] Type

W : 300 • H : 225 • D : 400 or smaller
Type B : Reinforced • Panel thickness : 1.0mm

[B12] Type

W : 500 • H : 250 • D : 500 or smaller
Type B : Reinforced • Panel thickness : 1.2mm



Confirm Product No.

Confirm an assigned product number in the following order format as below.

Product no. MBS

122	-	70	-	130		A		08
W		H		D		Base type		Panel thickness

Example : W = 122 mm, H = 70 mm, D = 130 mm, A base type in panel thickness of 0.8mm.

Lead time

Custom Size Only
Custom Size + Hole Milling

9 business days (1 ~ 3 pcs)
10 business days (1 ~ 3 pcs)

Order Inquiry

For more information, contact us here at sales@takachi-el.co.jp

MBS Type Chart

Refer to the below chart for A08, B10 or B12 type selection by W, H & D dimensions.

[A08] Type

Standard • Panel thickness : 0.8mm

[B10] Type

Reinforced • Panel thickness : 1.0mm

[B12] Type

Reinforced • Panel thickness : 1.2mm

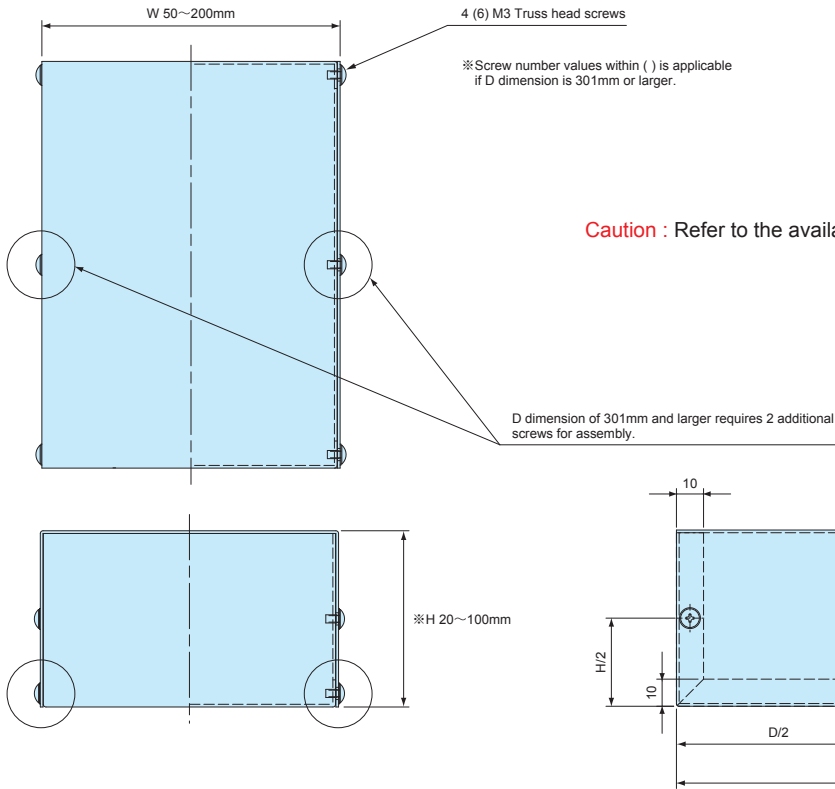
■ [—] sizes are not available.

W	H	D	4 screw fixing points										6 screw fixing points							
			50~79	80~99	100~125	126~150	151~175	176~200	201~225	226~250	251~275	276~300	301~325	326~350	351~375	376~400	401~425	426~450	451~475	476~500
50~99	20~35	A08	A08	A08	A08	A08	A08	A08	A08	A08	A08	A08	A08	A08	A08	A08	A08	A08	A08	A08
	36~50	—	A08	A08	A08	A08	A08	A08	A08	A08	A08	A08	B10	B10	B10	B10	B12	B12	B12	B12
100~150	20~50	A08	A08	A08	A08	A08	A08	A08	B10	B10	B10	B10	B12	B12	B12	B12	B12	B12	B12	B12
	51~75	—	—	A08	A08	A08	A08	A08	B10	B10	B10	B10	B12	B12	B12	B12	B12	B12	B12	B12
	76~100	—	—	—	A08	A08	A08	A08	B10	B10	B10	B10	B12	B12	B12	B12	B12	B12	B12	B12
151~200	20~50	—	A08	A08	A08	A08	A08	A08	B10	B10	B10	B10	B12	B12	B12	B12	B12	B12	B12	B12
	51~75	—	—	A08	A08	A08	A08	A08	B10	B10	B10	B10	B12	B12	B12	B12	B12	B12	B12	B12
	76~100	—	—	—	B10	B10	B10	B10	B10	B10	B10	B10	B12	B12	B12	B12	B12	B12	B12	B12
	101~125	—	—	—	—	B10	B10	B10	B10	B10	B10	B10	B12	B12	B12	B12	B12	B12	B12	B12
	126~150	—	—	—	—	—	B10	B10	B10	B10	B10	B10	B12	B12	B12	B12	B12	B12	B12	B12
201~250	20~50	—	B10	B10	B10	B10	B10	B10	B10	B10	B10	B10	B12	B12	B12	B12	B12	B12	B12	B12
	51~75	—	—	B10	B10	B10	B10	B10	B10	B10	B10	B10	B12	B12	B12	B12	B12	B12	B12	B12
	76~100	—	—	—	B10	B10	B10	B10	B10	B10	B10	B10	B12	B12	B12	B12	B12	B12	B12	B12
	101~125	—	—	—	—	B10	B10	B10	B10	B10	B10	B10	B12	B12	B12	B12	B12	B12	B12	B12
	126~150	—	—	—	—	—	B10	B10	B10	B10	B10	B10	B12	B12	B12	B12	B12	B12	B12	B12
	151~175	—	—	—	—	—	—	B10	B10	B10	B10	B10	B12	B12	B12	B12	B12	B12	B12	B12
251~300	176~200	—	—	—	—	—	—	—	B10	B10	B10	B10	B12	B12	B12	B12	B12	B12	B12	B12
	20~50	—	B10	B10	B10	B10	B10	B10	B10	B10	B10	B10	B12	B12	B12	B12	B12	B12	B12	B12
	51~75	—	—	B10	B10	B10	B10	B10	B10	B10	B10	B10	B12	B12	B12	B12	B12	B12	B12	B12
	76~100	—	—	—	B10	B10	B10	B10	B10	B10	B10	B10	B12	B12	B12	B12	B12	B12	B12	B12
	101~125	—	—	—	—	B10	B10	B10	B10	B10	B10	B10	B12	B12	B12	B12	B12	B12	B12	B12
	126~150	—	—	—	—	—	B10	B10	B10	B10	B10	B10	B12	B12	B12	B12	B12	B12	B12	B12
	151~175	—	—	—	—	—	—	B10	B10	B10	B10	B10	B12	B12	B12	B12	B12	B12	B12	B12
301~350	176~200	—	—	—	—	—	—	—	B10	B10	B10	B10	B12	B12	B12	B12	B12	B12	B12	B12
	201~225	—	—	—	—	—	—	—	—	B10	B10	B10	B12	B12	B12	B12	B12	B12	B12	B12
	226~250	—	—	—	—	—	—	—	—	—	B10	B10	B12	B12	B12	B12	B12	B12	B12	B12
	20~50	—	—	—	B12	B12	B12	B12	B12	B12	B12	B12	B12	B12	B12	B12	B12	B12	B12	B12
	51~75	—	—	—	B12	B12	B12	B12	B12	B12	B12	B12	B12	B12	B12	B12	B12	B12	B12	B12
	76~100	—	—	—	—	B12	B12	B12	B12	B12	B12	B12	B12	B12	B12	B12	B12	B12	B12	B12
	101~125	—	—	—	—	B12	B12	B12	B12	B12	B12	B12	B12	B12	B12	B12	B12	B12	B12	B12
	126~150	—	—	—	—	—	B12	B12	B12	B12	B12	B12	B12	B12	B12	B12	B12	B12	B12	B12
351~400	151~175	—	—	—	—	—	—	B12	B12	B12	B12	B12	B12	B12	B12	B12	B12	B12	B12	B12
	176~200	—	—	—	—	—	—	—	B12	B12	B12	B12	B12	B12	B12	B12	B12	B12	B12	B12
	201~225	—	—	—	—	—	—	—	—	B12	B12	B12	B12	B12	B12	B12	B12	B12	B12	B12
	226~250	—	—	—	—	—	—	—	—	—	B12	B12	B12	B12	B12	B12	B12	B12	B12	B12
	20~50	—	—	—	B12	B12	B12	B12	B12	B12	B12	B12	B12	B12	B12	B12	B12	B12	B12	B12
	51~75	—	—	—	B12	B12	B12	B12	B12	B12	B12	B12	B12	B12	B12	B12	B12	B12	B12	B12
	76~100	—	—	—	—	B12	B12	B12	B12	B12	B12	B12	B12	B12	B12	B12	B12	B12	B12	B12
	101~125	—	—	—	—	B12	B12	B12	B12	B12	B12	B12	B12	B12	B12	B12	B12	B12	B12	B12
401~450	126~150	—	—	—	—	—	B12	B12	B12	B12	B12	B12	B12	B12	B12	B12	B12	B12	B12	B12
	151~175	—	—	—	—	—	—	B12	B12	B12	B12	B12	B12	B12	B12	B12	B12	B12	B12	B12
	176~200	—	—	—	—	—	—	—	B12	B12	B12	B12	B12	B12	B12	B12	B12	B12	B12	B12
	201~225	—	—	—	—	—	—	—	—	B12	B12	B12	B12	B12	B12	B12	B12	B12	B12	B12
	226~250	—	—	—	—	—	—	—	—	—	B12	B12	B12	B12	B12	B12	B12	B12	B12	B12
	20~50	—	—	—	B12	B12	B12	B12	B12	B12	B12	B12	B12	B12	B12	B12	B12	B12	B12	B12
	51~75	—	—	—	B12	B12	B12	B12	B12	B12	B12	B12	B12	B12	B12	B12	B12	B12	B12	B12
	76~100	—	—	—	—	B12	B12	B12	B12	B12	B12	B12	B12	B12	B12	B12	B12	B12	B12	B12
451~500	101~125	—	—	—	—	B12	B12	B12	B12	B12	B12	B12	B12	B12	B12	B12	B12	B12	B12	B12
	126~150	—	—	—	—	—	B12	B12	B12	B12	B12	B12	B12	B12	B12	B12	B12	B12	B12	B12
	151~175	—	—	—	—	—	—	B12	B12	B12	B12	B12	B12	B12	B12	B12	B12	B12	B12	B12
	176~200	—	—	—	—	—	—	—	B12	B12	B12	B12	B12	B12	B12	B12	B12	B12	B12	B12
	201~225	—	—	—	—	—	—	—	—	B12	B12	B12	B12	B12	B12	B12	B12	B12	B12	B12
	226~250	—	—	—	—	—	—	—	—	—	B12	B12	B12	B12	B12	B12	B12	B12	B12	B12
	20~50	—	—	—	B12	B12	B12	B12	B12	B12	B12	B12	B12	B12	B12	B12	B12	B12	B12	B12
	51~75	—	—	—	B12	B12	B12	B12	B12	B12	B12	B12	B12	B12	B12	B12	B12	B12	B12	B12

MBS dimensions

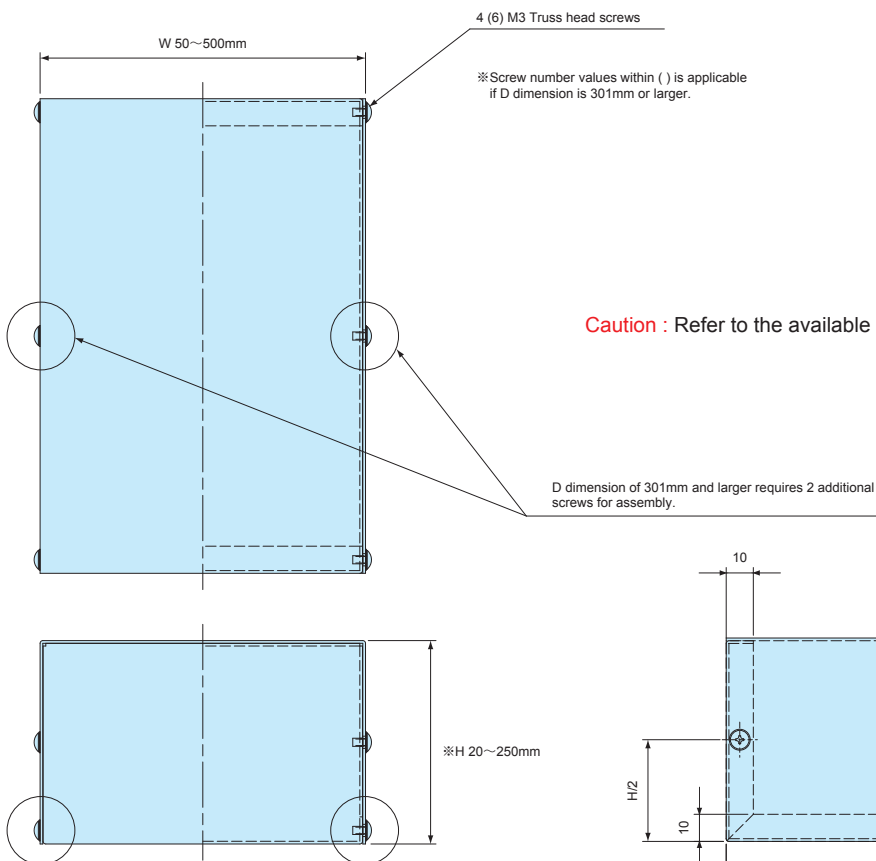
[A08] Type

Standard • Panel thickness : 0.8mm



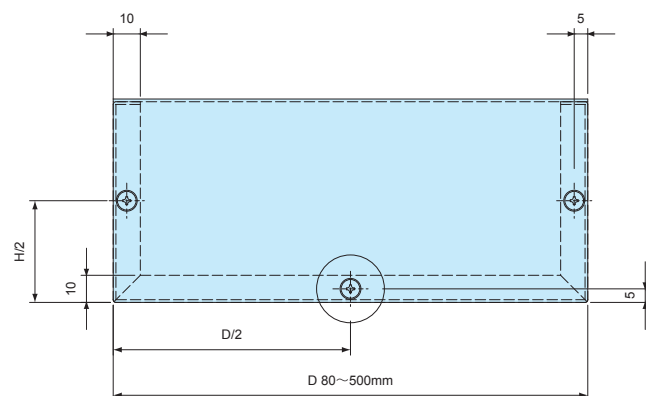
[B10] Type

Reinforced • Panel thickness : 1.0mm



[B12] Type

Reinforced • Panel thickness : 1.2mm



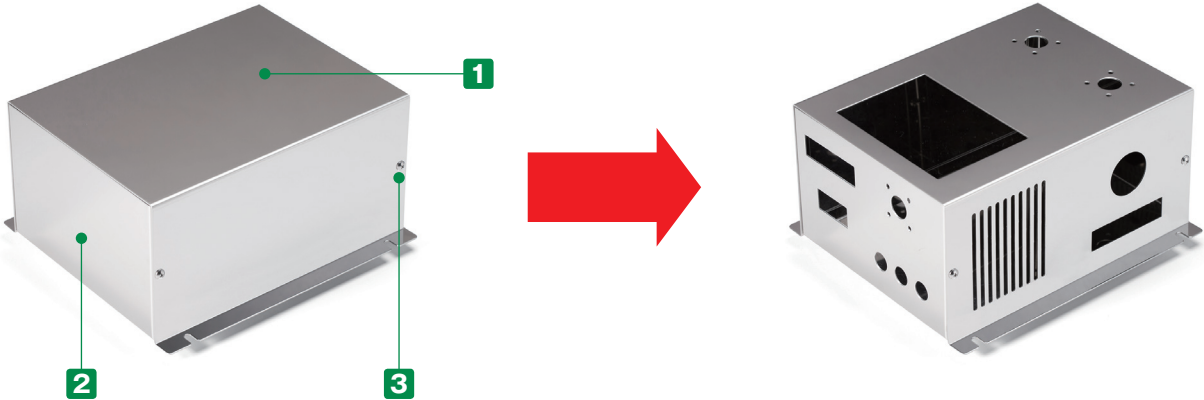
MBSF SERIES

CUSTOM SIZED FLANGED STAINLESS STEEL ENCLOSURE



- Adjustable sizes available in 1mm intervals, with W dimensions from 50 ~ 500mm, D dimensions from 50 ~ 400mm, and H dimensions from 20 ~ 250mm.
- Wall mount flange holes available in 2 models: 2-hole, and 4-hole types.
- SUS304 stainless steel allows the enclosure to be conductive.

CUSTOMIZED EXAMPLE

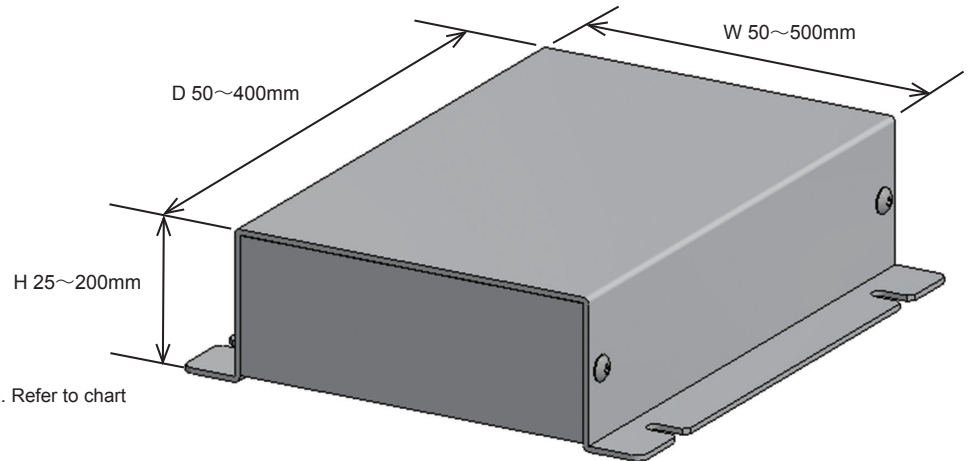


Components

No.	Part name	Pcs	Material	Color / Finish
1	Cover	1	Stainless steel SUS304	Bright annealed (BA)
2	Base	1	Stainless steel SUS304	Bright annealed (BA)
3	Screw (Truss M3-5)	4 or 6	Stainless steel	Unfinished

1 Specify Dimensions

Specify dimensions in 1mm intervals.



Caution : Not all size combinations are possible. Refer to chart for more information.

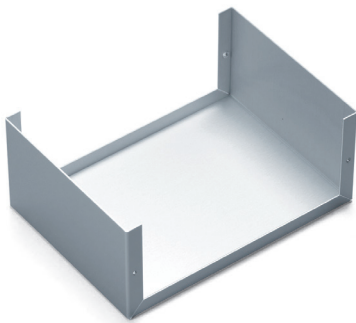
■ Panel thickness and base types vary by W / H / D dimensions.

Refer to the chart on page MBS-3 for A08, B10 or B12 type selection by W, H & D dimensions.

Base Type A

[A10] Type

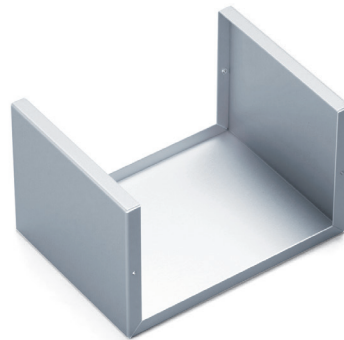
W : 200 • H : 100 • D : 400 or smaller
Type A : Standard • Panel thickness : 1.0mm



Base Type B

[B10] Type

W : 300 • H : 200 • D : 400 or smaller
Type B : Reinforced • Panel thickness : 1.0mm



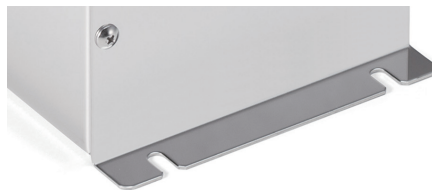
[B12] Type

W : 500 • H : 200 • D : 400 or smaller
Type B : Reinforced • Panel thickness : 1.2mm

2 Select Flange-hole Type



2 (1 on each side)



4 (2 on each side)

Confirm Product No.

Confirm an assigned product number in the following order format as below.

Product no. MBSF

155

W

80

H

200

D

A

Base type

10

Panel thickness

4

Flange hole

Example : W = 155 mm, H = 80 mm, D = 200 mm, A base type in panel thickness of 1.0mm, 4 flange holes

Lead time

Custom Size Only

9 business days (1 ~ 3 pcs)

Custom Size + Hole Milling

10 business days (1 ~ 3 pcs)

Order Inquiry

For more information, contact us here at sales@takachi-el.co.jp

MBSF Type Chart

Refer to the below chart for A10, B10 or B12 type selection by W, H & D dimensions.

[A10] Type

Standard • Panel thickness : 1.0mm

[B10] Type

Reinforced • Panel thickness : 1.0mm

[B12] Type

Reinforced • Panel thickness : 1.2mm

■ [—] sizes are not available.

W	H	D	4x fixing screw points										6x fixing screw points			
			50~74	75~99	100~125	126~150	151~175	176~200	201~225	226~250	251~275	276~300	301~325	326~350	351~375	376~400
50~99	25~35	25~35	A10	A10	A10	A10	A10	A10	A10	A10	A10	A10	A10	A10	A10	A10
		36~50	—	A10	A10	A10	A10	A10	A10	A10	A10	A10	B10	B10	B10	B10
100~150	25~29	25~29	—	A10	A10	A10	A10	A10	B10	B10	B10	B10	—	—	—	—
		30~50	—	A10	A10	A10	A10	A10	B10	B10	B10	B10	B12	B12	B12	B12
		51~75	—	—	A10	A10	A10	A10	B10	B10	B10	B10	B12	B12	B12	B12
		76~100	—	—	—	A10	A10	A10	B10	B10	B10	B10	B12	B12	B12	B12
151~200	25~29	25~29	—	A10	A10	A10	A10	A10	B10	B10	B10	B10	—	—	—	—
		30~50	—	A10	A10	A10	A10	A10	B10	B10	B10	B10	B12	B12	B12	B12
		51~75	—	—	B10	B10	B10	B10	B10	B10	B10	B10	B12	B12	B12	B12
		76~100	—	—	—	B10	B10	B10	B10	B10	B10	B10	B12	B12	B12	B12
		101~125	—	—	—	—	B10	B10	B10	B10	B10	B10	B12	B12	B12	B12
		126~150	—	—	—	—	—	B10	B10	B10	B10	B10	B12	B12	B12	B12
201~250	25~29	25~29	—	B10	B10	B10	B10	B10	B10	B10	B10	B10	—	—	—	—
		30~50	—	B10	B10	B10	B10	B10	B10	B10	B10	B10	B12	B12	B12	B12
		51~75	—	—	B10	B10	B10	B10	B10	B10	B10	B10	B12	B12	B12	B12
		76~100	—	—	—	B10	B10	B10	B10	B10	B10	B10	B12	B12	B12	B12
		101~125	—	—	—	—	B10	B10	B10	B10	B10	B10	B12	B12	B12	B12
		126~150	—	—	—	—	—	B10	B10	B10	B10	B10	B12	B12	B12	B12
		151~175	—	—	—	—	—	—	B10	B10	B10	B10	B12	B12	B12	B12
		176~200	—	—	—	—	—	—	—	B10	B10	B10	B12	B12	B12	B12
251~300	25~29	25~29	—	B10	B10	B10	B10	B10	B10	B10	B10	B10	—	—	—	—
		30~50	—	B10	B10	B10	B10	B10	B10	B10	B10	B10	B12	B12	B12	B12
		51~75	—	—	B10	B10	B10	B10	B10	B10	B10	B10	B12	B12	B12	B12
		76~100	—	—	—	B10	B10	B10	B10	B10	B10	B10	B12	B12	B12	B12
		101~125	—	—	—	—	B10	B10	B10	B10	B10	B10	B12	B12	B12	B12
		126~150	—	—	—	—	—	B10	B10	B10	B10	B10	B12	B12	B12	B12
		151~175	—	—	—	—	—	—	B10	B10	B10	B10	B12	B12	B12	B12
		176~200	—	—	—	—	—	—	—	B10	B10	B10	B12	B12	B12	B12
301~350	30~50	30~50	—	—	—	B12	B12	B12	B12	B12	B12	B12	B12	B12	B12	B12
		51~75	—	—	—	B12	B12	B12	B12	B12	B12	B12	B12	B12	B12	B12
		76~100	—	—	—	—	B12	B12	B12	B12	B12	B12	B12	B12	B12	B12
		101~125	—	—	—	—	B12	B12	B12	B12	B12	B12	B12	B12	B12	B12
		126~150	—	—	—	—	—	B12	B12	B12	B12	B12	B12	B12	B12	B12
		151~175	—	—	—	—	—	—	B12	B12	B12	B12	B12	B12	B12	B12
		176~200	—	—	—	—	—	—	—	B12	B12	B12	B12	B12	B12	B12
351~400	30~50	30~50	—	—	—	B12	B12	B12	B12	B12	B12	B12	B12	B12	B12	B12
		51~75	—	—	—	B12	B12	B12	B12	B12	B12	B12	B12	B12	B12	B12
		76~100	—	—	—	—	B12	B12	B12	B12	B12	B12	B12	B12	B12	B12
		101~125	—	—	—	—	B12	B12	B12	B12	B12	B12	B12	B12	B12	B12
		126~150	—	—	—	—	—	B12	B12	B12	B12	B12	B12	B12	B12	B12
		151~175	—	—	—	—	—	—	B12	B12	B12	B12	B12	B12	B12	B12
		176~200	—	—	—	—	—	—	—	B12	B12	B12	B12	B12	B12	B12
401~450	30~50	30~50	—	—	—	B12	B12	B12	B12	B12	B12	B12	B12	B12	B12	B12
		51~75	—	—	—	B12	B12	B12	B12	B12	B12	B12	B12	B12	B12	B12
		76~100	—	—	—	—	B12	B12	B12	B12	B12	B12	B12	B12	B12	B12
		101~125	—	—	—	—	B12	B12	B12	B12	B12	B12	B12	B12	B12	B12
		126~150	—	—	—	—	—	B12	B12	B12	B12	B12	B12	B12	B12	B12
		151~175	—	—	—	—	—	—	B12	B12	B12	B12	B12	B12	B12	B12
451~500	30~50	30~50	—	—	—	B12	B12	B12	B12	B12	B12	B12	B12	B12	B12	B12
		51~75	—	—	—	B12	B12	B12	B12	B12	B12	B12	B12	B12	B12	B12
		76~100	—	—	—	—	B12	B12	B12	B12	B12	B12	B12	B12	B12	B12
		101~125	—	—	—	—	B12	B12	B12	B12	B12	B12	B12	B12	B12	B12
		126~150	—	—	—	—	—	B12	B12	B12	B12	B12	B12	B12	B12	B12
		151~175	—	—	—	—	—	—	B12	B12	B12	B12	B12	B12	B12	B12
		176~200	—	—	—	—	—	—	—	B12	B12	B12	B12	B12	B12	B12

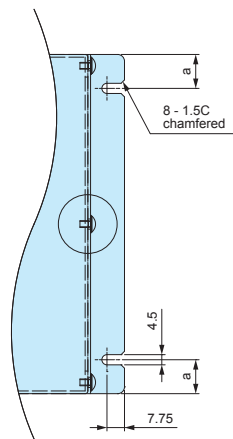
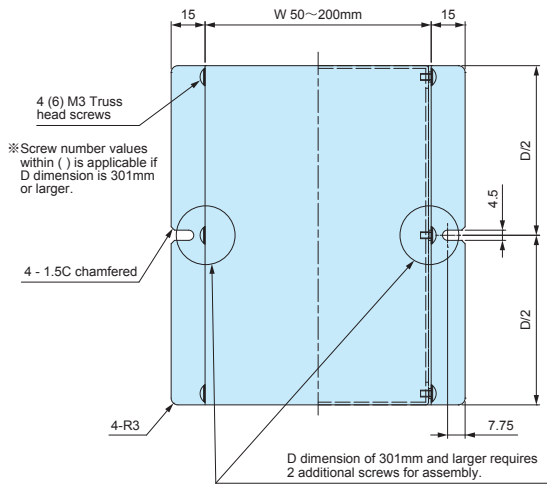
MBSF dimensions

[A10] Type

Standard • Panel thickness : 1.0mm

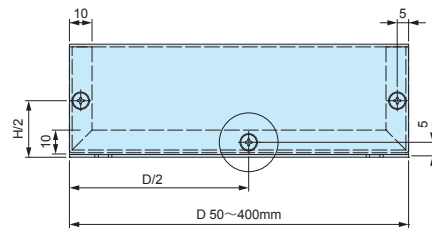
2-hole flange type

4-hole flange type



D dimension	a
50 ~ 60	10
61 ~ 140	15
141 ~ 240	20
241 ~ 400	30

Caution : Refer to the available dimensions on the chart.



[B10] Type

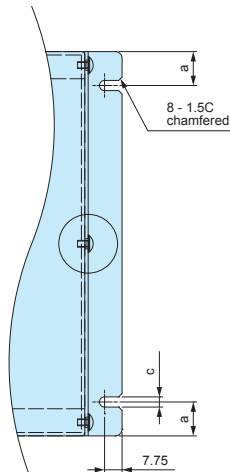
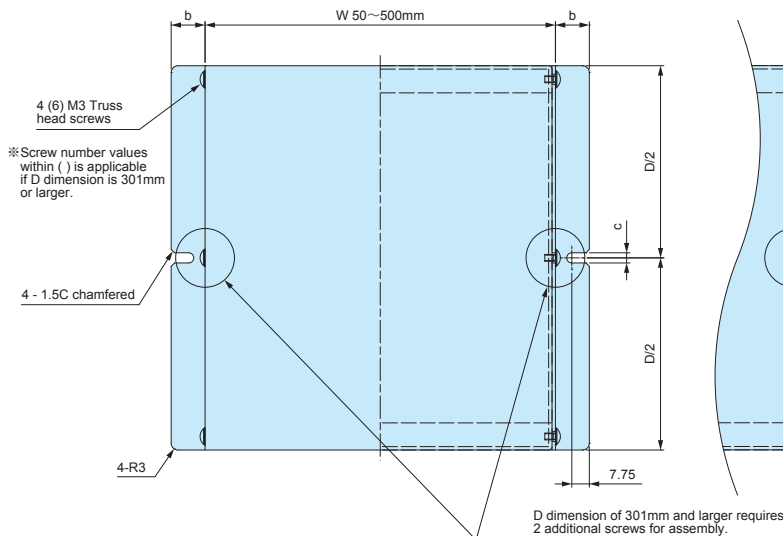
Reinforced • Panel thickness : 1.0mm

[B12] Type

Reinforced • Panel thickness : 1.2mm

2-hole flange type

4-hole flange type



D dimension	a	b	c
50 ~ 60	10	15	4.5
61 ~ 140	15	15	4.5
141 ~ 240	20	15	4.5
241 ~ 400	30	20	5.5

Caution : Refer to the available dimensions on the chart.

