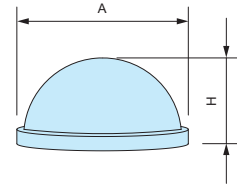


**SCR** series

**SELF-ADHESIVE CLEAR RUBBER FEET**



■ DXF/DWG/PDF drawings available on our website.



- Hemispherical semi-transparent type rubber feet with adhesive tape.
- Please note synthetic rubber may leave stains on the touching surface after an extended period of time.

**Product No. / Details**

■ Material / Color: Synthetic rubber / Semi-clear

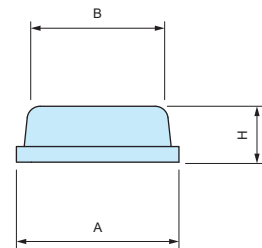
Product No.	A	H	Weight (g)	Pack of
SCR 8- 3	8	3	0.1 (1 pc)	10 pcs
SCR11- 5	11	5	0.4 (1 pc)	10 pcs
SCR12- 8	12	8	0.8 (1 pc)	10 pcs
SCR16- 8	16	8	1.2 (1 pc)	10 pcs
SRC19-10	19	10	2.3 (1 pc)	10 pcs

**SCRC** series

**SELF-ADHESIVE CLEAR RUBBER FEET, CYLINDRICAL SHAPE**



■ DXF/DWG/PDF drawings available on our website.



- Cylindrical semi-transparent type rubber feet with adhesive tape.
- Please note synthetic rubber may leave stains on the touching surface after an extended period of time.

**Product No. / Details**

■ Material / Color: Synthetic rubber / Semi-clear

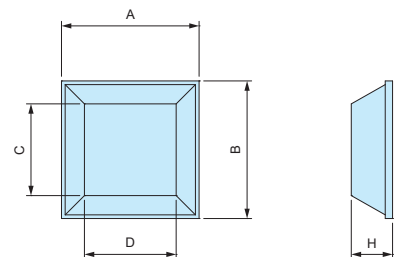
Product No.	A	B	H	Weight (g)	Pack of
SCRC 8-2	8.2	7.9	2.2	0.1 (1 pc)	10 pcs
SCRC10-4	10.3	8	4	0.3 (1 pc)	10 pcs
SCRC11-3	11.1	10.3	3.4	0.3 (1 pc)	10 pcs
SCRC13-4	12.5	10.3	4.4	0.4 (1 pc)	10 pcs
SCRC15-4	15	14	4.2	0.7 (1 pc)	10 pcs
SCRC18-6	17.6	16.6	5.6	1.3 (1 pc)	10 pcs

**SCRS** series

**SELF-ADHESIVE CLEAR RUBBER FEET, SQUARE SHAPE**



■ DXF/DWG/PDF drawings available on our website.



- Square shape semi-transparent type rubber feet with adhesive tape.
- Please note synthetic rubber may leave stains on the touching surface after an extended period of time.

**Product No. / Details**

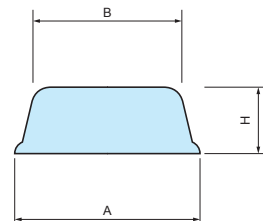
■ Material / Color: Synthetic rubber / Semi-clear

Product No.	A	B	H	C	D	Weight (g)	Pack of
SCRS11-3	10.5	10.5	2.7	8	8	0.2 (1 pc)	10 pcs
SCRS11-4	10.5	10.5	4.2	8	8	0.4 (1 pc)	10 pcs
SCRS13-3	12.7	12.7	3.4	9	9	0.4 (1 pc)	10 pcs
SCRS13-6	12.7	12.7	6.3	7	7	0.7 (1 pc)	10 pcs

**B** series

**ADHESIVE RUBBER FEET**

■ DXF/DWG/PDF drawings available on our website.



■ Injection molded type.

■ Please note color may be transferred from the synthetic rubber material after an extended period of time.

**Product no. / Details**

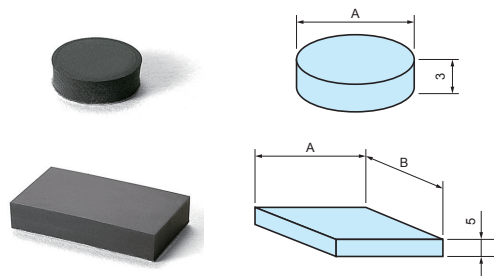
■ Material / Color : Synthetic rubber / Black

Product no.	A	B	H	Weight(g)	Pack of
B 6-2	6	5	1.8	0.1 (1pc)	10
B 8-4	8	7.7	3.5	0.2 (1pc)	10
B10-4	10	9.2	4.2	0.3 (1pc)	10
B11-3	10.8	10.2	3	0.4 (1pc)	10
B11-5	11	9.6	5	0.6 (1pc)	10
B12-4	12.7	10	3.8	0.6 (1pc)	10
B15-5	15.4	14.8	5.1	1.3 (1pc)	10
B16-7	16	13	7	1.5 (1pc)	10
B19-4	19	15.8	4.2	1.5 (1pc)	10
B21-7	21	17	7	2.6 (1pc)	10
B23-5	22.8	22.4	5	2.5 (1pc)	10
B26-11	26	20	11	5.9 (1pc)	10

**B-P** series

**ADHESIVE RUBBER FEET**

■ DXF/DWG/PDF drawings available on our website.



■ Press-punched type.

■ Please note color may be transferred from the synthetic rubber material after an extended period of time.

**Product no. / Details**

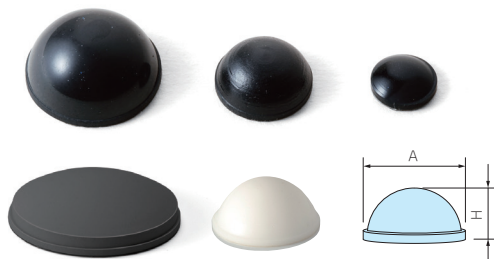
■ Material / Color : Synthetic rubber / Black

Product no.	A	B	Weight(g)	Pack of
B-P21	10	-	0.4 (1pc)	10
B-P22	20	-	1.6 (1pc)	10
B-P23	15	-	0.9 (1pc)	10
B-P31	28	16	3.4 (1pc)	10
B-P32	46	26	9.4 (1pc)	10

**TB** series

**ROUNDED ADHESIVE RUBBER FEET**

■ DXF/DWG/PDF drawings available on our website.



■ Hemispherical rubber feet with adhesive tape.

■ Please note color may be transferred from the synthetic rubber material after an extended period of time.

**Product no. / Details**

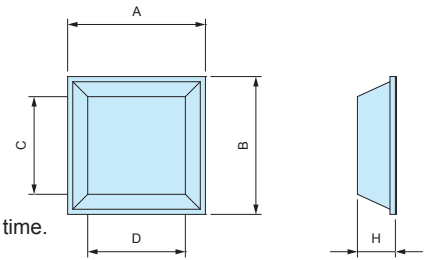
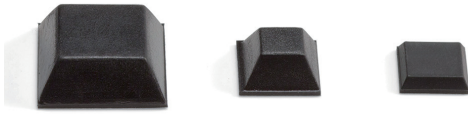
■ Material : Synthetic rubber

Product no.		A	H	Weight(g)	Pack of
● Black	● White (W)				
TB- 7	-	6.7	4.2	0.2 (1pc)	10
TB- 8	TB- 8W	8	2.6	0.3 (1pc)	10
TB-10	-	10	2.8	0.3 (1pc)	10
TB-12	TB-12W	11.3	5.6	1 (1pc)	10
TB-14	-	14	8	1.2 (1pc)	10
TB-16	TB-16W	15.9	8	1.9 (1pc)	10
TB-21	-	21.6	8.5	2.6 (1pc)	10
TB-27	-	27.8	7.4	4.9 (1pc)	10

# SF series

## SQUARE ADHESIVE RUBBER FEET - LOW COST TYPE

■ DXF/DWG/PDF drawings available on our website.



- Square-shaped adhesive rubber feet.
- Please note color may be transferred from the synthetic rubber material after an extended period of time.

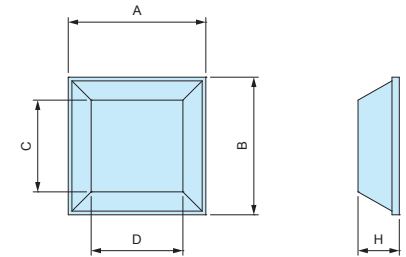
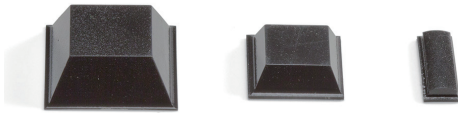
**Product no. / Details** ■ Material / Color : Synthetic rubber / Black

Product no.	A	B	H	C	D	Weight (g)	Pack of
SF11-3	10.5	10.5	2.5	8.6	8.6	0.5 (1pc)	10
SF13-4	12.7	12.7	3.5	9	9	0.7 (1pc)	10
SF13-6	12.7	12.7	6	7	7	1 (1pc)	10
SF20-8	20	20	7.6	14	14	3.3 (1pc)	10

# SJ-P series

## SQUARE ADHESIVE POLYURETHANE FEET

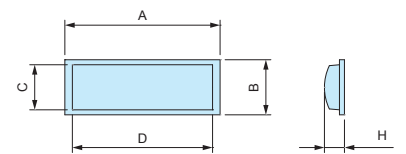
■ DXF/DWG/PDF drawings available on our website.



- Strong adhesive strength with the use of rubber pressure sensitive adhesive.
- Polyurethane material is resistant against color migration.

**Product no. / Details** ■ Material / Color : Polyurethane / Black

Product no.	A	B	H	C	D	Weight (g)	Pack of
SJ-P5007	10.4	10.4	2.5	7.5	7.5	0.4 (1pc)	10
SJ-P5008	12.7	12.7	3	9.5	9.5	0.6 (1pc)	10
SJ-P5018	12.7	12.7	5.8	7	7	0.9 (1pc)	10
SJ-P1004	15	15	4.5	10	10	1 (1pc)	10
SJ-P5023	20.6	20.6	7.6	12.7	12.7	2.9 (1pc)	10
SJ-P1011	15.5	5.5	2	4.5	14.5	0.2 (1pc)	10

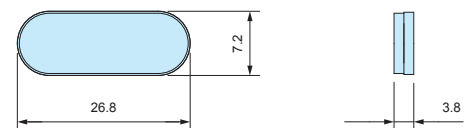
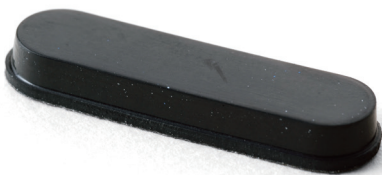


SJ-P1011

# TN-27

## OVAL ADHESIVE RUBBER FEET

■ DXF/DWG/PDF drawings available on our website.



- This rubber feet can be attached in any position as it has rubber pressure sensitive adhesive on the back side. Peel off the sheet on the back to attach.
- Please note color may be transferred from the synthetic rubber material after an extended period of time.

**Product no. / Details** ■ Material / Color : Synthetic rubber / Black

Product no.	Weight (g)	Pack of
TN-27	1.2 (1pc)	10

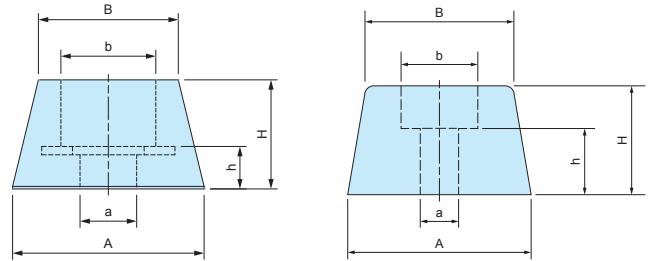
**B-P** series

**SCREW MOUNT RUBBER FEET**

■ DXF/DWG/PDF drawings available on our website.



- Built-in washer and non-washer types are available.
- Please note color may be transferred from the synthetic rubber material after an extended period of time.



B-P1S, P1M, P1L, P2S, P4, P5

B-P1, P2, P3

**Product no. / Details**

■ Color : Black

Product no.	A	B	H	a	b	h	Washer	Material	Weight (g)	Pack of
B-P1S	11.5	8.4	7.2	3.4	5.7	3.2	○	Synthetic rubber	0.8 (1pc)	10
B-P1M	15	15	4	3.5	7.4	2.2	○	Synthetic rubber	1.3 (1pc)	10
B-P1	15	13	7.7	3	6	4.2	×	Synthetic rubber	1.6 (1pc)	10
B-P1L	16	13	7.8	3	6	3.7	○	Synthetic rubber	1.7 (1pc)	10
B-P2S	18	15	11	3	6	5	○	Synthetic rubber	3.9 (1pc)	10
B-P2	19	15	8	3	6	4.5	×	Synthetic rubber	2.5 (1pc)	10
B-P3	22	18	13	3	7.5	7	×	Synthetic rubber	4.6 (1pc)	10
B-P4	32	26	20	5	15	10	○	EPDM	15 (1pc)	10
B-P5	32	28	15	5	14	10	○	EPDM	12.4 (1pc)	10

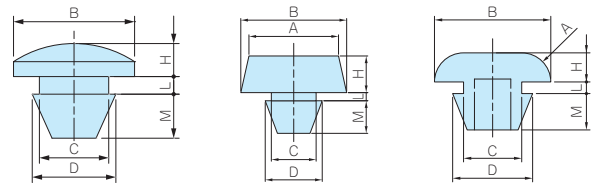
**B-P** series

**SNAP-IN RUBBER FEET**

■ DXF/DWG/PDF drawings available on our website.



- Hole milling required for installation.
- Please note color may be transferred from the synthetic rubber material after an extended period of time.



B-P10

B-P10S, P11, P12

B-P13, P14, P15

**Product no. / Details**

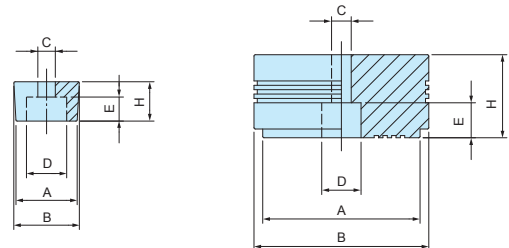
■ Color : Black

Product no.	A	B	H	C	D	L	M	Material	Weight (g)	Pack of
B-P10S	8	8	2	5	5.6	0.9	3	Silicone UL94V-0	0.2 (1pc)	10
B-P10	—	11	3	6.3	7.6	1.6	4	Silicone UL94V-0	0.5 (1pc)	10
B-P11	11	13	4.5	5.5	7	1	4	Synthetic rubber	0.8 (1pc)	10
B-P12	15	17	4.5	5.5	7	1	4	Synthetic rubber	1.3 (1pc)	10
B-P13	R3	12	3	5	7	1.6	4	EPDM	0.5 (1pc)	10
B-P14	R4	14	4	6	9	1.6	5	EPDM	0.7 (1pc)	10
B-P15	R4	16	4	8	11	1.6	5	EPDM	1.2 (1pc)	10

**A-P SERIES**

**SCREW MOUNT ELASTOMER FEET**

■ DXF/DWG/PDF drawings available on our website.



A-P1 ~ A-P5

A-P6

- Prepare screws for installation.
- Resistant against color migration.

**Product no. / Dimensions**

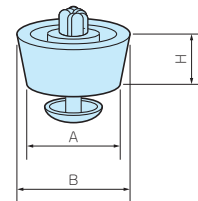
■ Material / Color : Elastomer / Black

Product no.	A	B	H	C	D	E	Pack of
A-P1	9.4	10.8	4	3.3	6.8	2	10
A-P2	13.4	14.2	5.5	3	8	3.5	10
A-P3	14	15	9	4	9.5	6	10
A-P4	20	21	8	4	8.2	5	10
A-P5	20	24	14	5.5	8.6	8	10
A-P6	36	40	19	4.5	9	7.5	10

**TP SERIES**

**SNAP-IN ELASTOMER FEET**

■ DXF/DWG/PDF drawings available on our website.



- Easy installation with snap-in pin.
- Require a hole for installation.
- Resistant against color migration.

**Product no. / Dimensions**

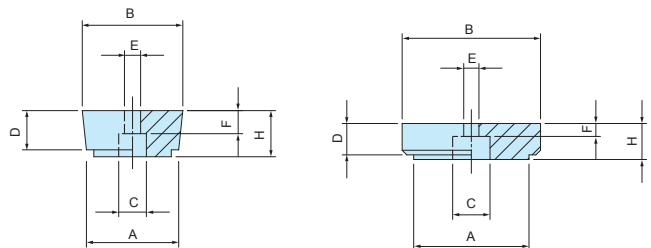
■ Material / Color : (Feet) LDPE • (PIN) PP / Black

Product no.	A	B	H	Mounting hole	Panel thickness	Pack of
TP-1	12	12.7	4.4	5	1.0 ~ 2.0	10
TP-2	15	15.7	4.4	5	1.0 ~ 2.0	10
TP-3	17.2	19.2	7.9	8	0.8 ~ 1.2	10
TP-4	18	20	10	8	1.0 ~ 2.5	10
TP-5	19.8	20.8	6.4	8	1.0 ~ 2.5	10
TP-6	19.5	23.7	13.7	8	1.0 ~ 2.5	10
TP-7	26.5	29.4	15	10	1.0 ~ 3.5	10

**TM SERIES**

**PLASTIC FEET**

■ DXF/DWG/PDF drawings available on our website.



TM-1, TM-2

TM-1S, TM-3

- Plastic feet equipped with soft padding on the bottom to prevent sliding.

**Product no. / Dimensions**

Product no.	A	B	H	C	D	E	F	Feet material	Pad material	Color	Pack of
TM-1S	15.9	19.5	6.3	7	5.8	4	2.3	ABS UL94HB	Silicone	Black	10
TM-1	20	21.8	10	7.2	8.5	3.5	4.5	ABS UL94HB	EVA	Black	10
TM-2	20	21.8	15	7.2	13.5	3.5	4.5	ABS UL94HB	EVA	Black	10
TM-3	25	30	7.8	8.1	6.8	3.3	2.7	ABS UL94HB	EVA	Black	10

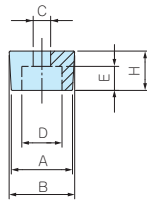
A series

# SCREW MOUNT ELASTOMER FEET

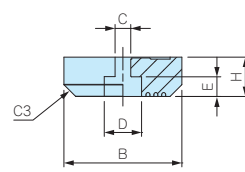


## A dimensions

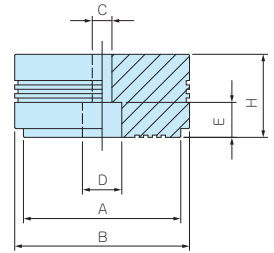
■ DXF/DWG/PDF drawings available on our website.



A11-4~A24-14



A30-10



A40-19

- Prepare screws for installation.
- Resistant against color migration.

■ Material / Color : Elastomer / Black

Product no.	A	B	H	C	D	E	Pack of	Old product no.	Difference
A11- 4	9.4	10.8	4	3.3	6.8	2	10	A-P1	Product number change only.
A14- 6	13.4	14.2	5.5	3	8	3.5	10	A-P2	Product number change only.
A15- 9	14	15	9	4	9.5	6	10	A-P3	Product number change only.
A21- 8	20	21	8	4	8.2	5	10	A-P4	Product number change only.
A24-14	20	24	14	5.5	8.6	8	10	A-P5	Product number change only.
<b>NEW</b> A30-10	—	30	10	4	9.5	5	10	—	—
A40-19	36	40	19	4.5	9	8	10	A-P6	Product number change only.

# TLW series TILT LEG



APPLICATION EXAMPLE

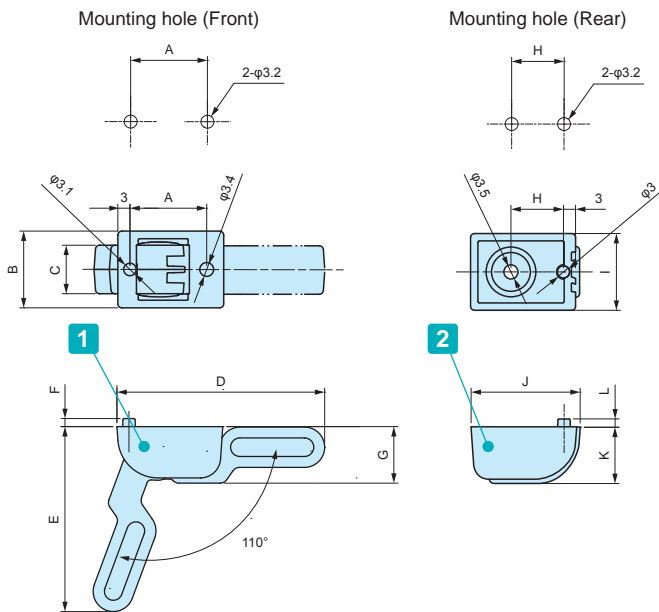
- Double shot injection molded feet with soft and well-designed rounded shape.
- Non-slip design with Elastomer (TPE) pad.
- Available in 3 different color patterns (2 color patterns for TLW-70 models).
- TLW-70E models are exclusively for use with width 185mm or larger bottom covers of EXP • EXPE • EXW • EX • EXH • EXHE aluminium enclosures.

Technical Data
Max load : 7kg

Components

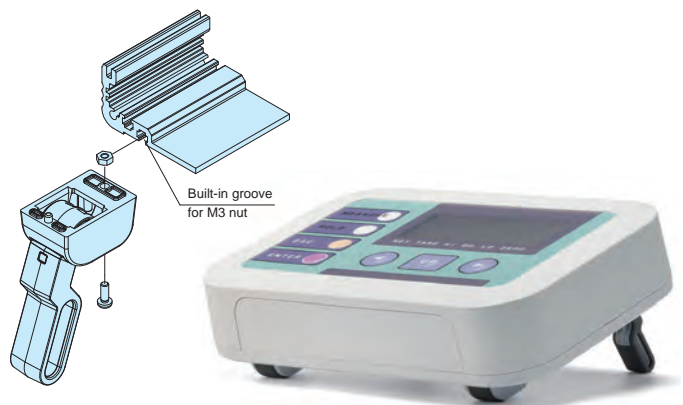
No.	Part name	Pcs	Material	Color / Finish
1	Front foot	2	PC + ABS UL94V-0 • TPE	Black & Black • Navy & Gray • Light gray & Gray
2	Rear foot	2	PC + ABS UL94V-0 • TPE	Black & Black • Navy & Gray • Light gray & Gray
-	Screw	4	Steel M3-8 pan head	Black trivalent chromate
-	Nut	4	Steel M3	Black trivalent chromate

TLW dimensions



■ DXF/DWG/PDF/STP drawings available on our website.

- TLW-70E□□ models are for installation (with M3 nut) into the built-in grooves on bottom-covers of EXP • EXPE 20-6, EXH • EXHE • EX 19-4 or larger models.
- Hole milling is required to install TLW-46□□ and TLW-70□□ models.
- Max installation panel thickness : t = 3.5mm



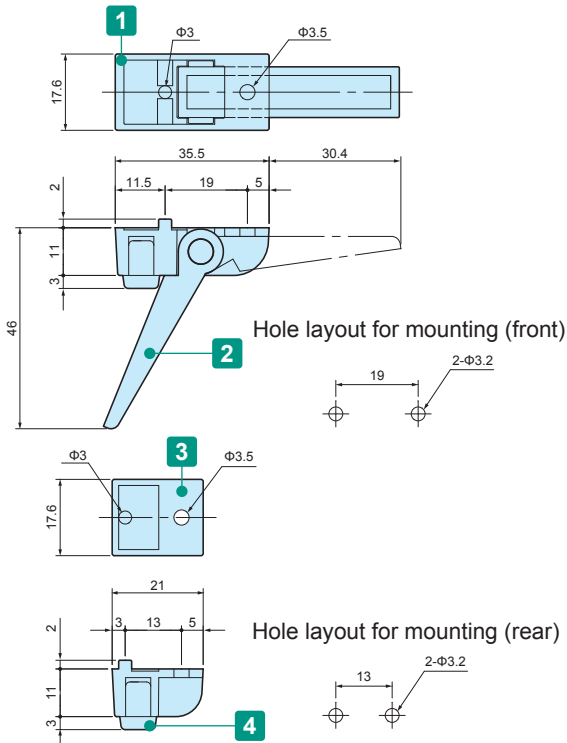
Product no. / Details

Product no.	A	B	C	D	E	F	G	H	I	J	K	L	Color (plastic)	Color (TPE)	Weight (g)
TLW-46BB	19	19	12	51.2	45.9	2	14	13	19	27	14	2	Black	Black	23
TLW-46NG	19	19	12	51.2	45.9	2	14	13	19	27	14	2	Navy	Gray	23
TLW-46LG	19	19	12	51.2	45.9	2	14	13	19	27	14	2	Light gray	Gray	23
TLW-70EBB	-	25	16	75.4	69	3	21.5	-	25	39	21.5	3	Black	Black	59
TLW-70ENG	-	25	16	75.4	69	3	21.5	-	25	39	21.5	3	Navy	Gray	59
TLW-70ELG	-	25	16	75.4	69	3	21.5	-	25	39	21.5	3	Light gray	Gray	59
TLW-70BB	30	25	16	75.4	69	2	21.5	20	25	39	21.5	2	Black	Black	59
TLW-70LG	30	25	16	75.4	69	2	21.5	20	25	39	21.5	2	Light gray	Gray	59



# TL series TILT LEG

## TL dimensions



DXF/DWG/PDF drawings available on our website.



### Components

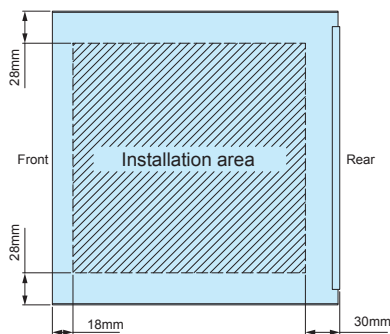
\* Maximum load = 7 kg

No.	Part name	Pcs	Material	Color / finish
1	Front feet	2	ABS (UL94HB)	Black, Light gray, Dark gray
2	Leg	2	ABS (UL94HB)	Black, Light gray, Dark gray
3	Rear feet	2	ABS (UL94HB)	Black, Light gray, Dark gray
4	Rubber feet	4	EPDM	Black
-	Screw (M3-8 pan head)	4	Steel	Trivalent chromate
-	Nut	4	Steel	Trivalent chromate

### Product no. / Details

Product no.	Color (body)	Color (rubber feet)	Weight (g)
TL-45BB	Black	Black	25 (1 set)
NEW TL-45SB	Light gray	Gray	25 (1 set)
NEW TL-45DB	Dark gray	Gray	25 (1 set)

## MS • MO SERIES INSTALLATION AREA



- Please note EPDM (black) may stain the surface.
- Mounting plate thickness: max. 3.5mm



# CBF-1G CABLE HOOK



- Used for wrapping and securing cords and wires.
- Can be used with a variety of different enclosure series and models.
- Requires a panel thickness of between 1.0 ~ 3.0mm.

### Product no. / Details

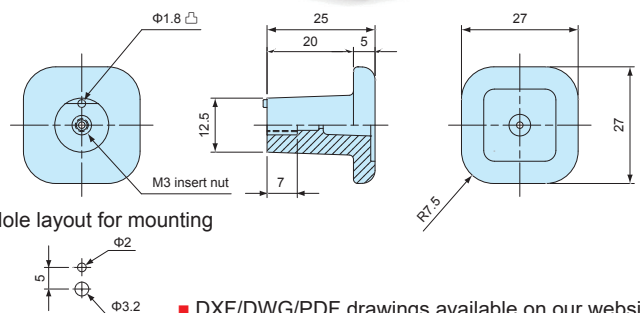
Product no.	Material	Color	Pack of
CBF-1G	ABS UL94HB	Gray	4

■ Included screws: M3-8 trivalent chromate (with washer) x 4 pcs



### CBF dimensions

### APPLICATION EXAMPLE



DXF/DWG/PDF drawings available on our website.

AFS•AFM series

ALUMINIUM ISOLATION FEET



External type / Shot blast finish AFS series



Internal type / Reflective finish AFM series

- The surface treatment and finish allows the feet to exhibit a polished and luxurious feel.
- Non-slip NBR O-ring is located on the underside of the feet.

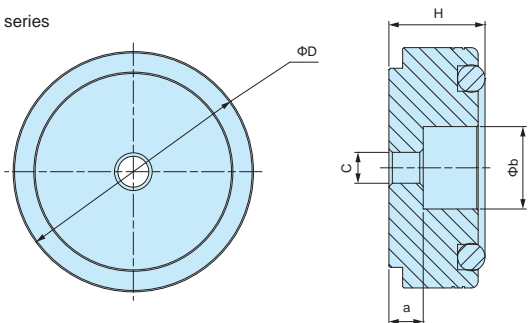
Product no. / Details

Product no.		D	H	Installation type	C	a	b	Pack of
● Silver	● Black							
AFS20- 8S	AFS20- 8B	20	8	External	Φ3.4	3	9	4
AFS25-10S	AFS25-10B	25	10	External	Φ4.5	4	12	4
AFS30-12S	AFS30-12B	30	12	External	Φ4.5	5	12	4
AFS35-14S	AFS35-14B	35	14	External	Φ4.5	5	12	4
AFS39-16S	AFS39-16B	39	16	External	Φ4.5	5	15	4
AFS44-18S	AFS44-18B	44	18	External	Φ4.5	5	20	4
AFS55-20S	AFS55-20B	55	20	External	Φ5.5	5	20	4
AFM15- 7S	-	15	7	Internal	M3	4	-	4
AFM20- 9S	-	20	9	Internal	M3	5	-	4
AFM25-12S	-	25	12	Internal	M4	7	-	4
AFM30-14S	-	30	14	Internal	M4	8	-	4
AFM35-16S	-	35	16	Internal	M4	10	-	4
AFM39-18S	-	39	18	Internal	M4	10	-	4
AFM44-20S	-	44	20	Internal	M4	10	-	4
AFM55-22S	-	55	22	Internal	M5	15	-	4

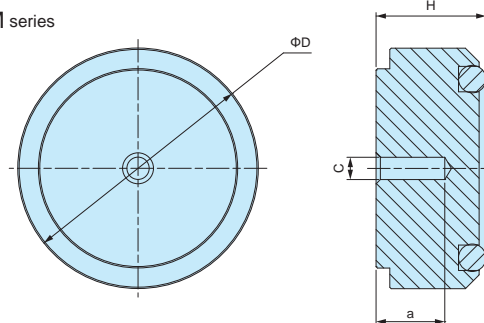
AFS • AFM dimensions

■ DXF/DWG/PDF/STP drawings available on our website.

AFS series



AFM series



APPLICATION EXAMPLE



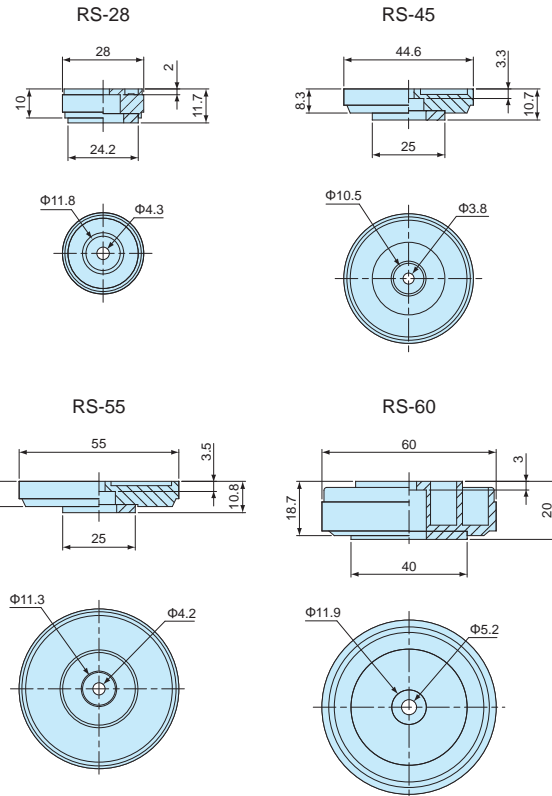
RS series

PLATED PLASTIC FEET



- Suitable for audio equipment use.
- Elastomeric foam pad is located on the underside of the feet.

RS dimensions



■ DXF/DWG/PDF drawings available on our website.

Product no. / Details

Product no.		Material	Pack of
● Silver	● Gold		
RS-28S	RS-28G	ABS UL94HB / Polyester / EVA	4
RS-45S	RS-45G	ABS UL94HB / Polyester / EVA	4
RS-55S	RS-55G	ABS UL94HB / Polyester / EVA	4
RS-60S	RS-60G	ABS UL94HB / Polyester / EVA	4

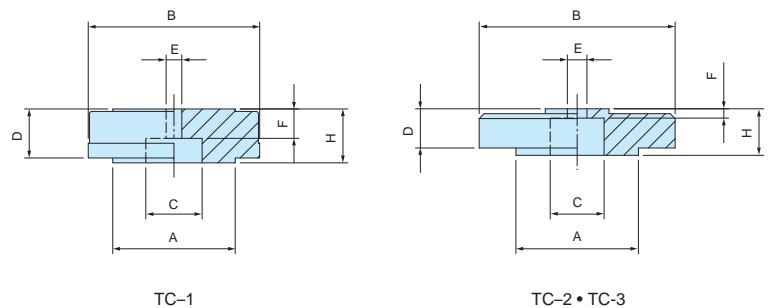
TC series

ALUMINIUM FEET



- Aluminium material gives it a refined and elegant look.
- Suitable for audio equipment use.
- Elastomeric foam pad is located on the underside of the feet.

TC dimensions



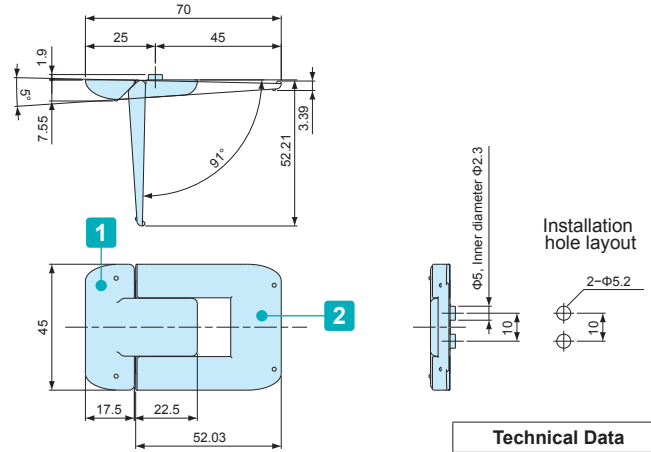
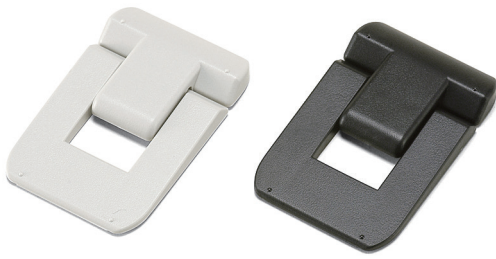
■ DXF/DWG/PDF drawings available on our website.

Product no. / Details

Product no.		A	B	C	D	E	F	H	Material	Pack of
● Silver	● Gold									
TC-1S	TC-1G	25	35	11.5	9.7	3.4	5.6	11.5	ABS UL94HB / Aluminium / EVA	4
TC-2S	TC-2G	25	40	10.5	10.4	4.1	2.4	12.5	ABS UL94HB / Aluminium / EVA	4
TC-3S	TC-3G	25	45	11.7	13	4.2	7.5	15	ABS UL94HB / Aluminium / EVA	4

**TI SERIES**

**TILT STAND**



**Technical Data**

Max load : 3kg

**Components**

No.	Part name	Pcs	Material	Color / Finish
1	Body	1	ABS UL94HB	Black • Light gray
2	Leg	1	ABS UL94HB	Black • Light gray
—	Screw (M3-6 Pan head tapping)	2	Steel	Trivalent chromate

**Product no.**

Product no.	
● Black	● Light Gray
TI-70B	TI-70S



Installation Example