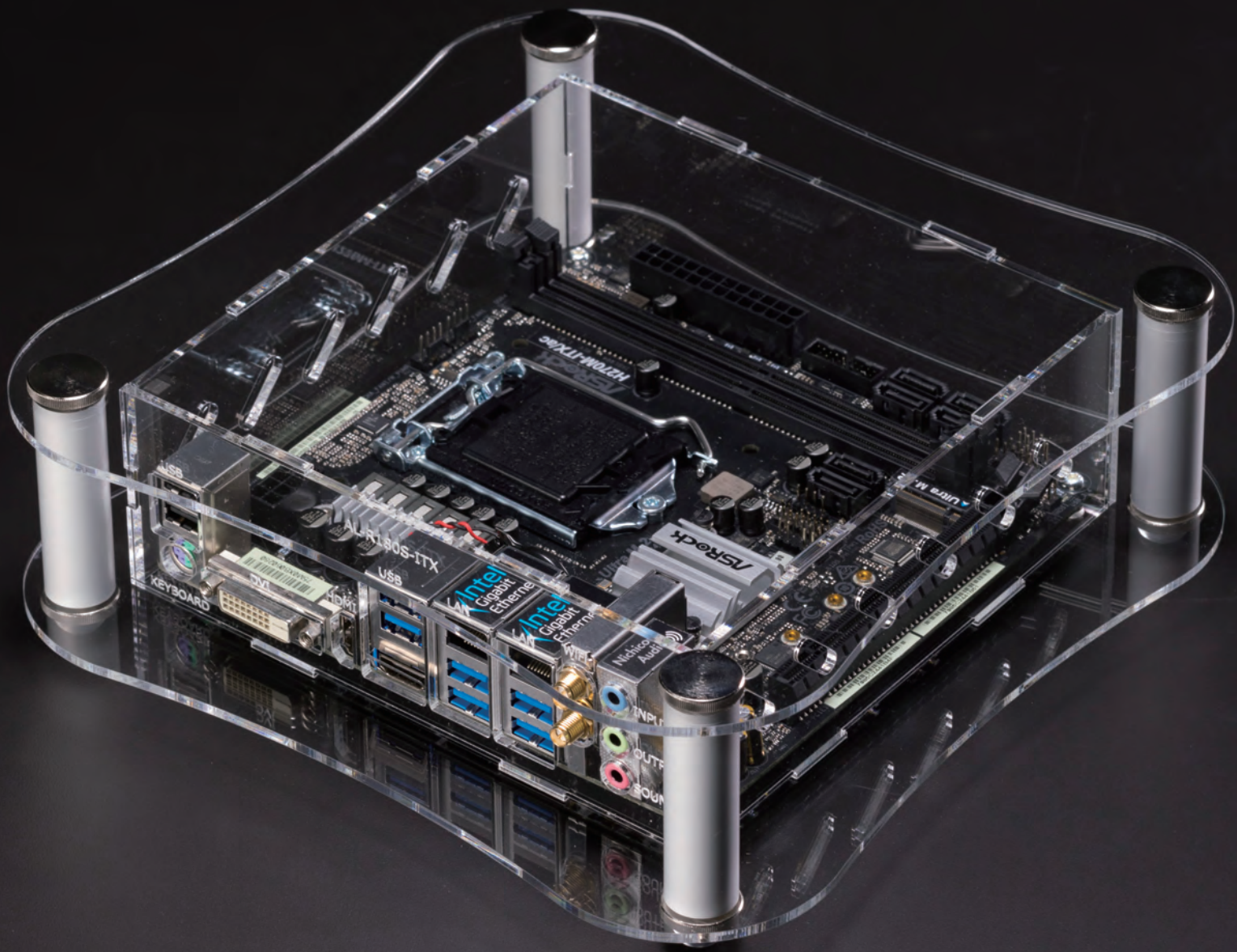




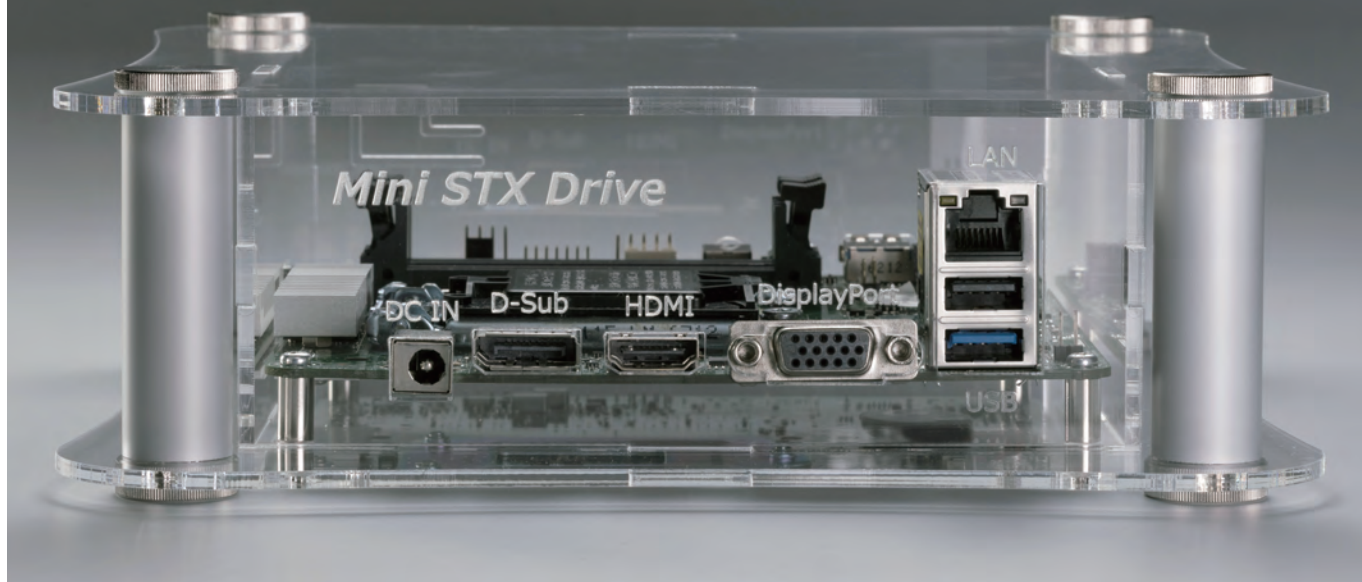
SHOW IT THROUGH SKELETON CASE



CASE BOX RACK & CUSTOM
TAKACHI ELECTRONICS ENCLOSURE CO., LTD.

SHOW IT THROUGH SKELETON CASE

An elegant and sophisticated curved design acrylic case with stylish aluminium pillars at the corners. Perfect for exhibitions or demonstration events to both showcase the internals and provide a unique product visual appeal.



Easy Assembly Curved Design Case



Custom Sized Cases Available

Custom sized cases are available 50 ~ 500 width / length(depth) and 30 ~ 500 height in 1mm intervals.

See SKLF series on our website for further details.



CUSTOMIZATION POSSIBILITIES

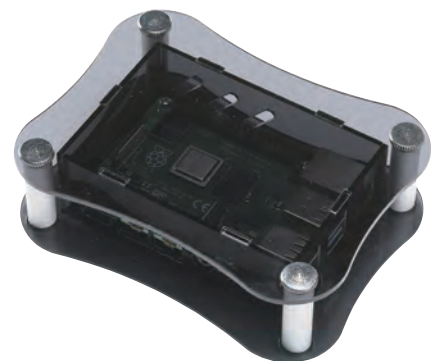
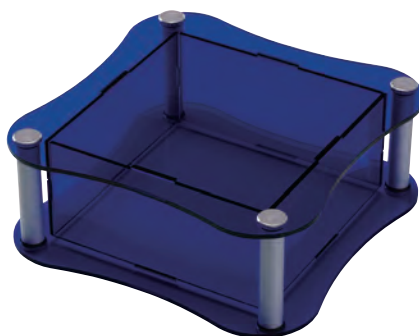
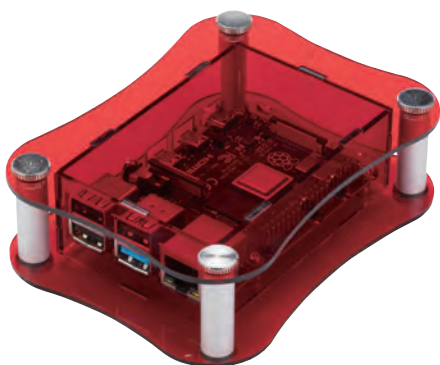
Printing

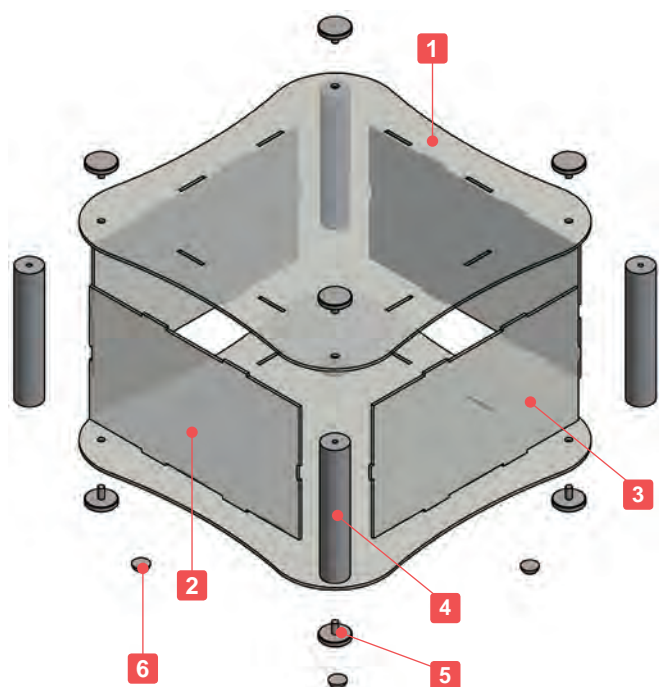
Print your logo, text and more using our customization services, such as inkjet printing.



Color Variation

Available in different color types, as well as smoked / tinted shades.





- Curved transparent acrylic case with corner support columns.
- 5 different sizes are available.
- Usable as a display enclosure for a unique and luxurious outlook.
- SKL11-5-17 and 11-8-17 models are compatible with the Euro Board.
SKL18-7-18 and 18-10-18 models are compatible with the Mini ITX board.
- Possible to be used in a flat layout, or a standing layout.
- Knurled thumb screws for easy hand assembly.
- Custom sized cases are available. See SKLF series on our website for further details.

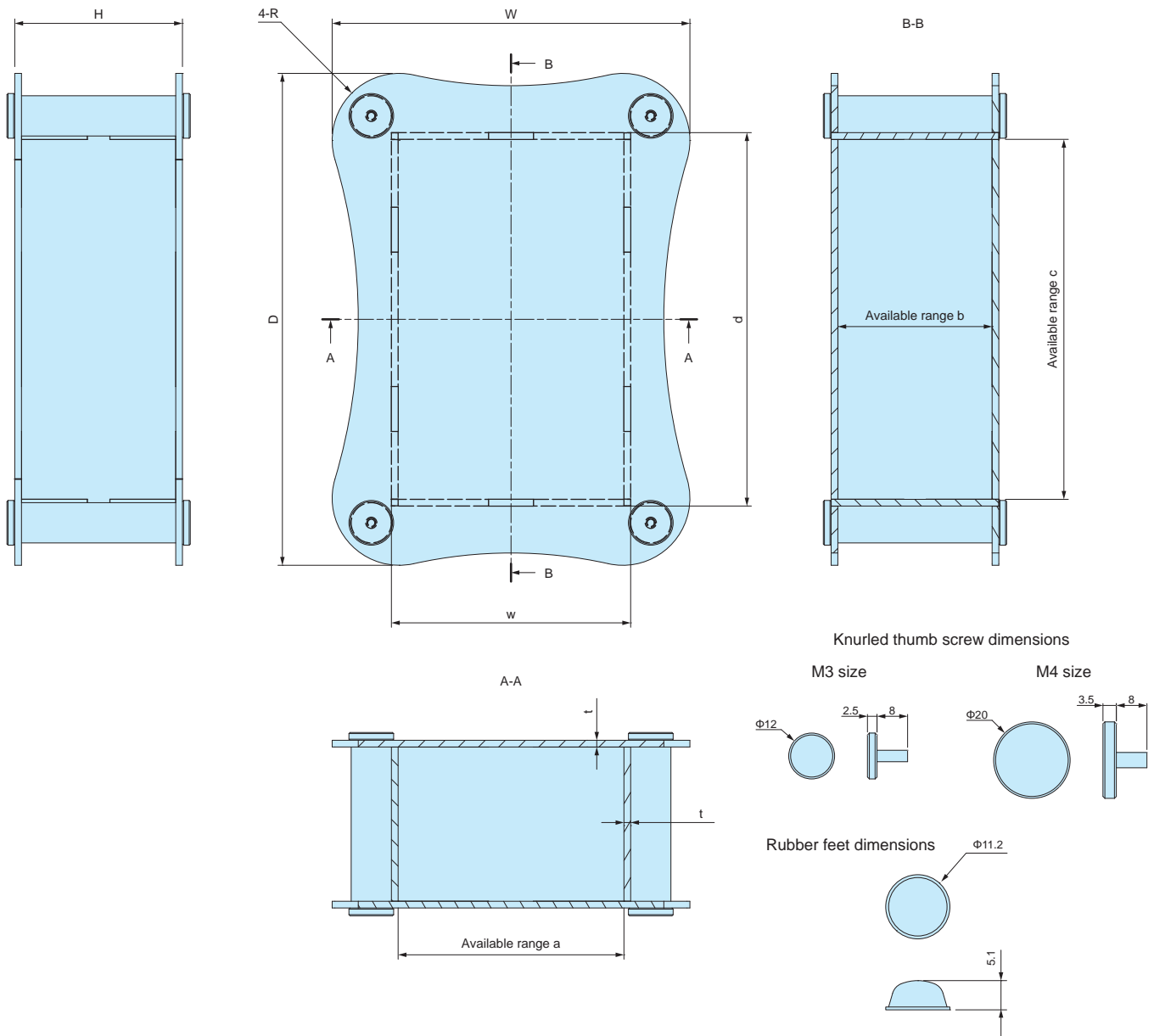
※Ethanol or other alcoholic solvents may cause the acrylic panel to crack. Use a neutral cleaner or specialized acrylic cleaning solvent for cleaning.

Components

No.	Part name	Pcs	Material	Color / Finish
1	Top - Bottom cover	1 each	Acrylic	Transparent
2	W panel	2	Acrylic	Transparent
3	D panel	2	Acrylic	Transparent
4	Pillar	4	Extruded aluminium A6063S-T5	Silver / Anodized
5	Knurled thumb screw	8	Brass	Nickel plated
6	Rubber feet	4	Polyurethane	Transparent

SKL dimensions

■ DXF/DWG/PDF/STP drawings available on our website.



Product no. / Dimensions

Product no.	External dimensions			Case dimensions		Available range			R	t	Screw size	Weight (g)
	W	H	D	w	d	a	b	c				
SKL10- 5-10	141	51	141	105	105	101	47	101	25	2	M3	191.5
SKL11- 5-17	165	47	225	107	167	101	41	161	25	3	M4	507
SKL11- 8-17	165	77	225	107	167	101	71	161	25	3	M4	643
SKL18- 7-18	239	67	239	177	177	171	61	171	40	3	M4	762
SKL18-10-18	239	102	239	177	177	171	96	171	40	3	M4	940.5

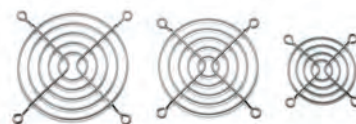
Accessories (Optional parts)



Adhesive standoff AST series
See page 121



Cooling fan AGE • IGE series
See website

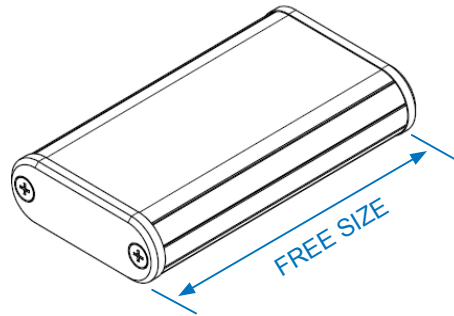
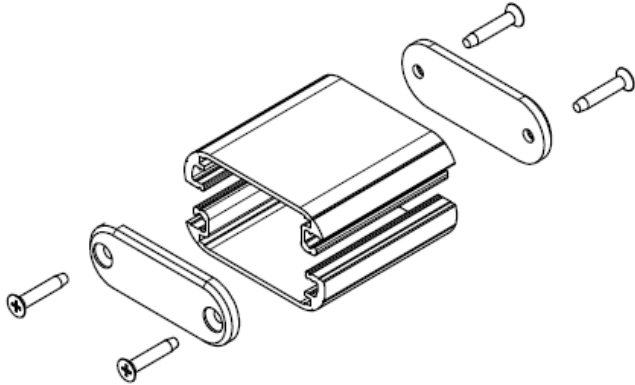


Finger guard HF-G series
See website

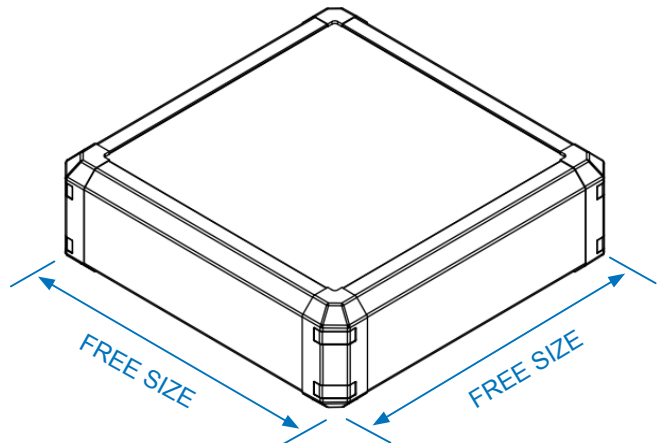
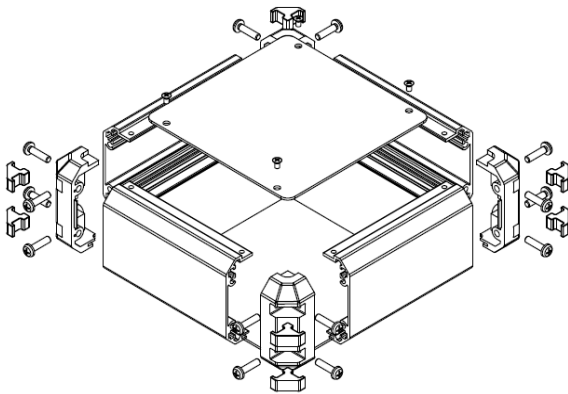
VARIETY OF CUSTOM SIZED ENCLOSURES

Extruded models are adjustable in extrusion length (depth) in 0.1mm or 1.0mm intervals.
Sheet-metal models are adjustable in W/D/H dimensions in 1.0mm intervals.

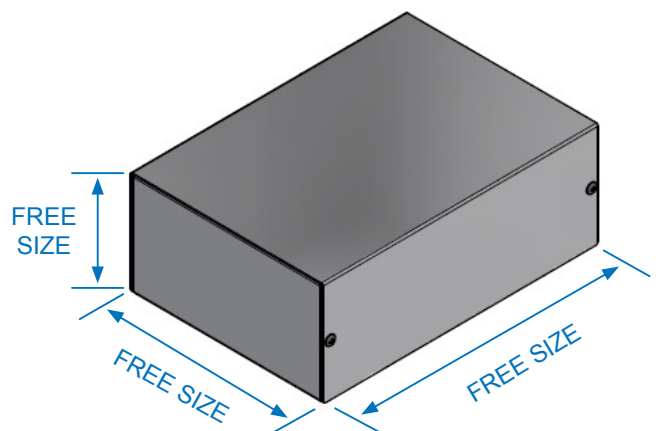
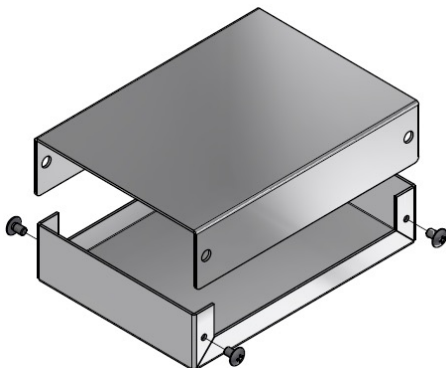
EXTRUDED ALUMINIUM MODEL



4 SIDE-EXTRUDED ALUMINIUM MODEL




SHEET METAL MODEL



More custom sized models are available.

https://www.takachi-enclosure.com/cat/flexible_size

INQUIRING CUSTOM SIZED ENCLOSURES

- 1 Navigate to the free-size product page you wish to inquire on our website and click on the button indicated by the  arrow.



Custom sized shock-proof design instrument enclosure.
Corner guards are designed to be both aesthetically pleasing, and impact resistant.

Selectable 22 different Width/Height profiles and specified length (depth) from 40 to 500mm in 1mm intervals.
16 different color combinations can be specified.

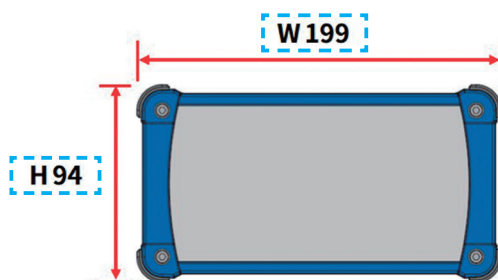


CUSTOM SIZE WEB QUOTATION	3D View - Silver/Navy	3D View - 16 color types
3D View - With tilt legs	Exploded view	Color code

■ If there is no "WEB QUOTATION" click button, please send us your inquiry from the "INQUIRY FORM" on the CONTACT tab on our website.

- 2 Go to the CUSTOM SIZE WEB QUOTATION page and enter your preferred dimensions.

STEP1 Select required width / height.



Select	W	H	Select	W	H
<input type="checkbox"/>	69	34	<input type="checkbox"/>	151	81
<input type="checkbox"/>	69	44	<input type="checkbox"/>	151	101
<input type="checkbox"/>	69	59	<input type="checkbox"/>	199	56
<input type="checkbox"/>	89	39	<input type="checkbox"/>	199	74
<input type="checkbox"/>	89	49	<input checked="" type="checkbox"/>	199	94
<input type="checkbox"/>	89	64	<input type="checkbox"/>	199	119
<input type="checkbox"/>	116	41	<input type="checkbox"/>	244	64
<input type="checkbox"/>	116	56	<input type="checkbox"/>	244	89
<input type="checkbox"/>	116	71	<input type="checkbox"/>	244	114
<input type="checkbox"/>	151	46	<input type="checkbox"/>	300	90
<input type="checkbox"/>	151	61	<input type="checkbox"/>	300	140

STEP2 Specify size D(depth) ... Enter dimensions in 1mm intervals.

Available from 40 to 500mm



*NOTE: Specified size D(depth) \neq available internal dimension

Available internal dimension = **D dimension - 20mm**

Please take caution when calculating required D dimension.

- 3 After entering the quantity, click on the button indicated by the → arrow to generate a Product No.

STEP4 **Quantity** ※Quantity can be specified up to 5 slots.

10 pcs

▶Add quantity



▶ **GENERATE PRODUCT NO.**

Product No. **EXPS199 – 94 – 345SN** ※Please use this model number when ordering.

- 4 After entering your details and the message in our INQUIRY FORM, click on the CONFIRM button.

STEP5 **INQUIRY FORM**

Fill out the inquiry form and send it. We will give you quotation by Email.
Inquiry from the country where the distributor is located will be answered by the distributor.

Fields marked with ★ are required

Product No. **EXPS199-94-345SN** Quantity ★ 10

E-mail ★ jiro@takachi-el.co.jp

Company ★ TAKACHI ELECTRONICS ENCLOSURE CO., LTD.

Your name ★ ☐ Mr. ☒ Ms. First name Jiro Last name Takachi

Country ★

Message
I would like a quote for 10 pieces of EXPS199-94-345SN.

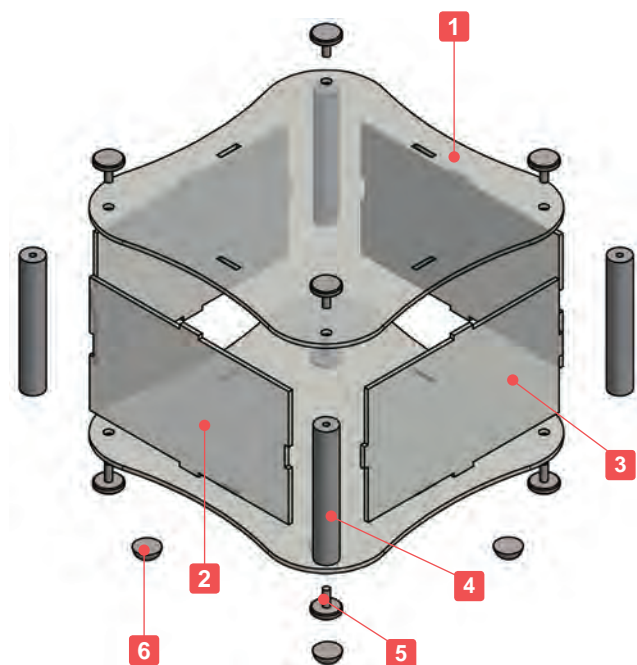
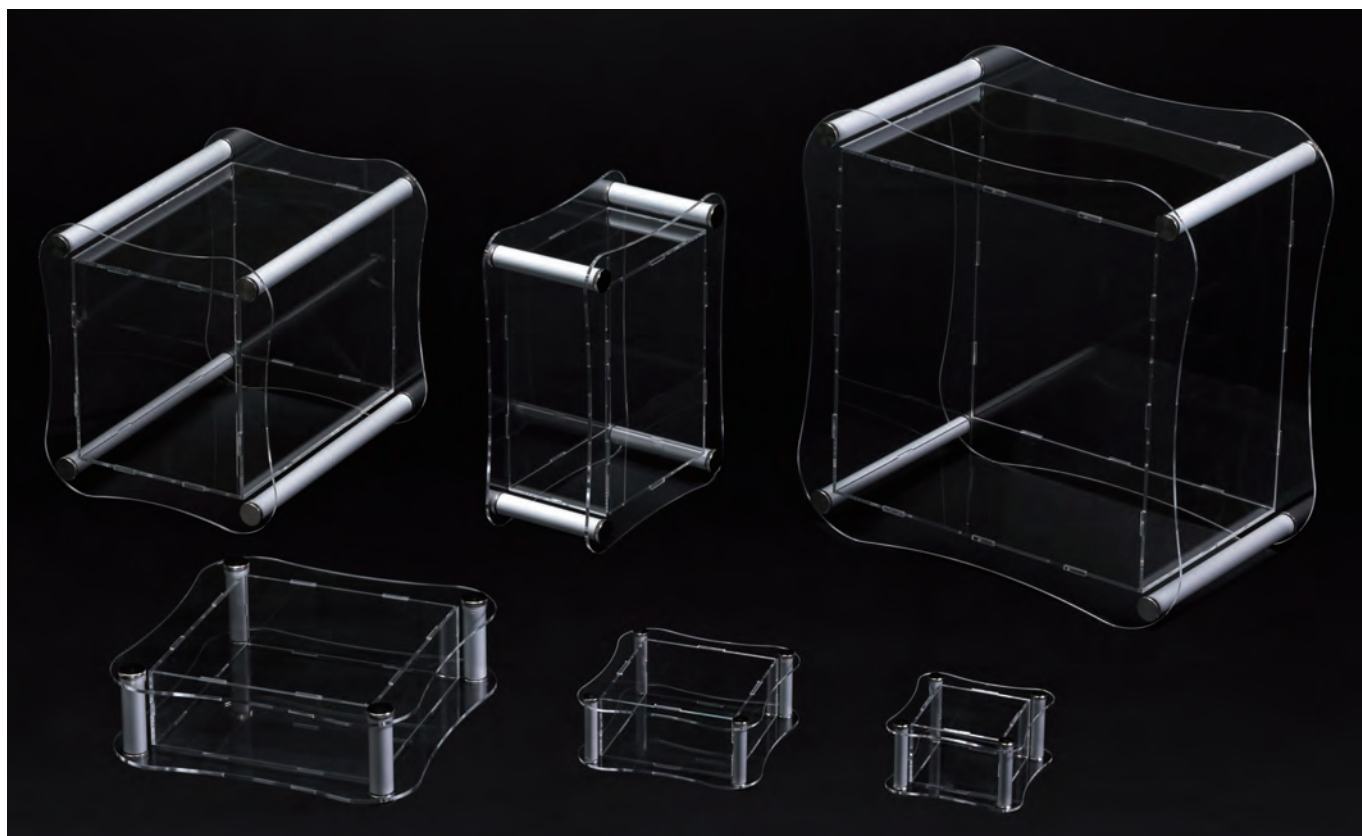


▶ **CONFIRM**

Our privacy policy have been designed to ensure that personal information is not misused or used for purposes other than it is intended for.
[PRIVACY POLICY](#)

- 5 A TAKACHI sales representative will get in touch with you with a quote via e-mail.





- Adjustable sizes available in 1mm intervals, with W and D dimensions from 50 ~ 500mm, and H dimensions from 30 ~ 500mm.
- Rubber feet can be provided if required in S (Φ11.2mm) or L (Φ15.7mm) sizes.
- Knurled thumb screws for easy hand assembly.

※ Ethanol or other alcoholic solvents may cause the acrylic panel to crack.
Use a neutral cleaner or specialized acrylic cleaning solvent for cleaning.

■ Caution

- On larger sized cases, the top cover may come loose if the middle part is held without support.



Components

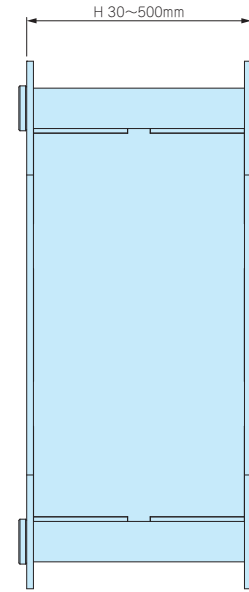
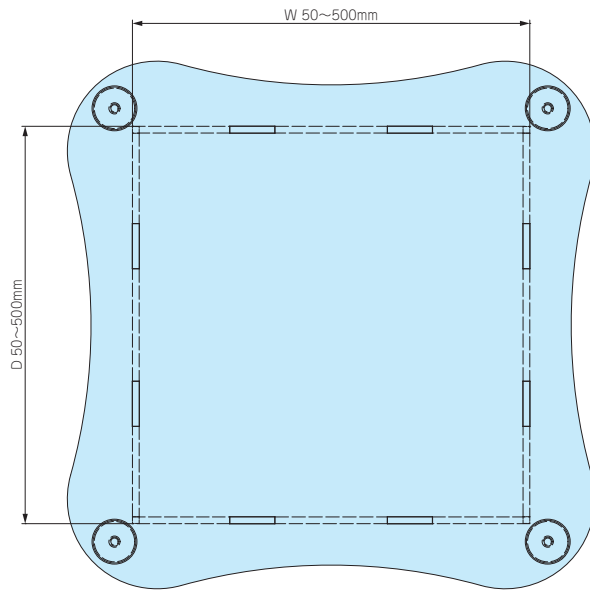
No.	Part name	Pcs	Material	Color / Finish
1	Top · Bottom cover	1 each	Acrylic	Transparent
2	W panel	2	Acrylic	Transparent
3	D panel	2	Acrylic	Transparent
4	Pillar	4	Extruded aluminium A6063S-T5	Silver anodized
5	Knurled thumb screw	8	Brass	Nickel plated
6	Rubber feet	0 or 5	Polyurethane	Transparent

1 Specify Dimensions

Specify dimensions in 1mm intervals.

※Specify rectangular case dimensions, not external dimensions.

Include panel thickness in H dimension.



■ Panel thickness, knurled thumb screw sizes, and pillar types vary by W / D dimensions.

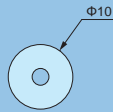
[S10] Type

Dimension : W & D = refer to chart

Panel thickness : t = 2.0mm

Knurled thumb screw size : M3

Pillar : Φ10.0 (external diameter)



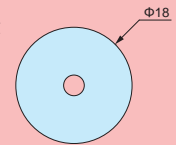
[S18] Type

Dimension : W & D = refer to chart

Panel thickness : t = 3.0mm

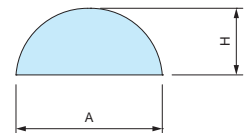
Knurled thumb screw size : M4

Pillar : Φ18.0 (external diameter)



2 Select Rubber Feet

Code	A	H	Pack of
N (None)	—	—	—
S	11.2	5.1	5
L	15.7	7.9	5



Confirm Product No.

Confirm an assigned product number in the following order format as below.

Product no. SKLF - -
W H D S10 or S18 Rubber feet

Example : W = 250 mm, H = 150 mm, D = 300 mm with L type rubber feet.

SKLF 250 - 150 - 300 S18 L

Order Inquiry

For more information, contact us here at sales@takachi-el.co.jp

SKLF Type Chart

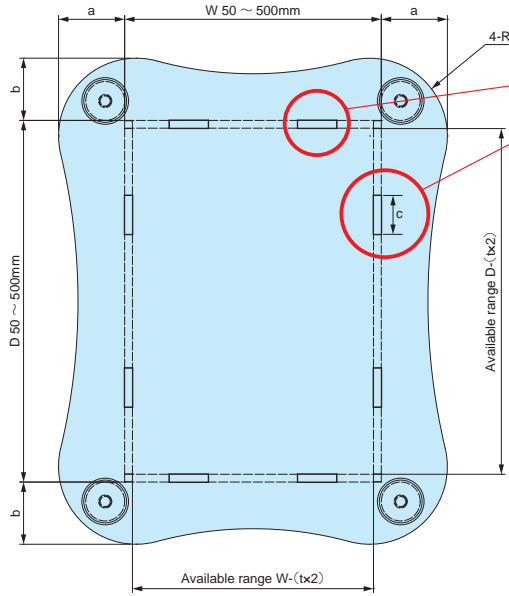
Refer to the below chart for S10 or S18 type selection by W & D dimensions.

[S10] type : t = 2.0mm · M3 screw · Φ10.0 pillar

[S18] type : t = 3.0mm · M4 screw · Φ18.0 pillar

W	H	D	50~100	101~150	151~200	201~250	251~300	301~350	351~400	401~450	451~500
50~100	30~100										
	101~200										
	201~300										
	301~400										
	401~500										
101~150	30~100										
	101~200										
	201~300										
	301~400										
	401~500										
151~200	30~100										
	101~200										
	201~300										
	301~400										
	401~500										
201~250	30~100										
	101~200										
	201~300										
	301~400										
	401~500										
251~300	30~100										
	101~200										
	201~300										
	301~400										
	401~500										
301~350	30~100										
	101~200										
	201~300										
	301~400										
	401~500										
351~400	30~100										
	101~200										
	201~300										
	301~400										
	401~500										
401~450	30~100										
	101~200										
	201~300										
	301~400										
	401~500										
451~500	30~100										
	101~200										
	201~300										
	301~400										
	401~500										

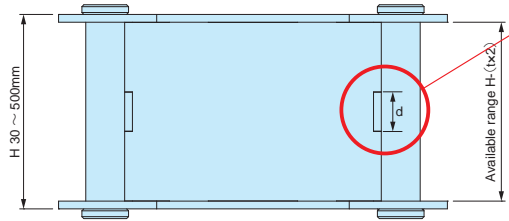
SKLF dimensions



Number of joints vary by specified W / D dimensions.
Refer to the below chart for more information.

W dimension	Joints (one side)	D dimension	Joints (one side)
50~150	1	50~150	1
151~200	2	151~200	2
201~300	3	201~300	3
301~400	4	301~400	4
401~500	5	401~500	5

Joint c dimension = 20.0mm



Number of joints vary by specified H dimensions.
Refer to the below chart for more information.

H dimension	Joint d dimension	Joints (one side)
30~100	10mm	1
101~200	20mm	1
201~300	20mm	2
301~400	20mm	3
401~500	20mm	4

D dimension	50~100			101~150			151~200			201~250			251~300		
	a	b	R	a	b	R	a	b	R	a	b	R	a	b	R
50~100	17	17	15	17	17	15	29	28	15	29	28	15	30	28	15
101~150	17	17	15	18	18	25	29	29	25	30	29	25	30	29	25
151~200	28	29	15	29	29	25	31	31	40	31	31	40	32	31	40
201~250	28	29	15	29	30	25	31	31	40	33	33	50	33	33	50
251~300	28	30	15	29	30	25	31	32	40	33	33	50	35	35	60
301~350	35	37	15	36	38	25	38	39	40	40	41	50	42	42	60
351~400	35	38	15	36	38	25	38	40	40	40	41	50	42	43	60
401~450	35	38	15	36	39	25	38	40	40	40	42	50	42	43	60
451~500	35	39	15	36	39	25	38	41	40	40	42	50	42	44	60

D dimension	301~350			351~400			401~450			451~500		
	a	b	R	a	b	R	a	b	R	a	b	R
50~100	37	35	15	38	35	15	38	35	15	39	35	15
101~150	38	36	25	38	36	25	39	36	25	39	36	25
151~200	39	38	40	40	38	40	40	38	40	41	38	40
201~250	41	40	50	41	40	50	42	40	50	42	40	50
251~300	42	42	60	43	42	60	43	42	60	44	42	60
301~350	44	44	70	44	44	70	45	44	70	45	44	70
351~400	44	44	70	46	46	80	46	46	80	47	46	80
401~450	44	45	70	46	46	80	48	48	90	48	48	90
451~500	44	45	70	46	47	80	48	48	90	50	50	100

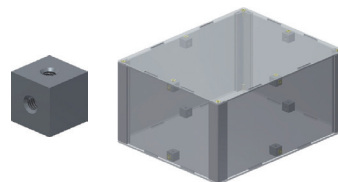
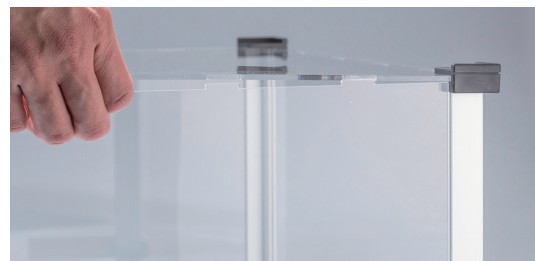
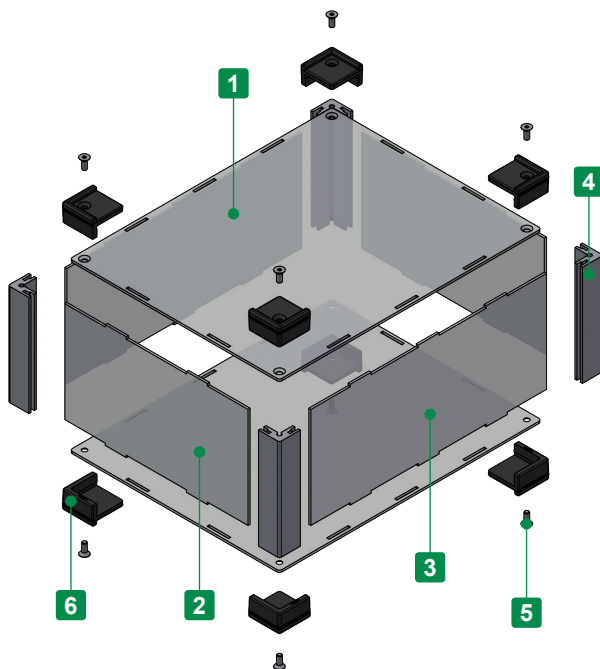


- Rugged design acrylic case with TPE (Elastomer) corner guards.
- Adjustable sizes available in 1mm intervals, with W and D dimensions from 55 ~ 500mm, and H dimension from 30 ~ 500mm.
- Extruded aluminium corner pillars enables the structure to be rigid when screwed.

※Ethanol or other alcoholic solvents may cause the acrylic panel to crack.
Use a neutral cleaner or specialized acrylic cleaning solvent for cleaning.

■ Caution

- On larger sized boxes, the top cover may come loose if the middle part is held without support.



To prevent rattles and also to make more rigid construct, CUBE spacer is available as option.
See page 120 for more details.

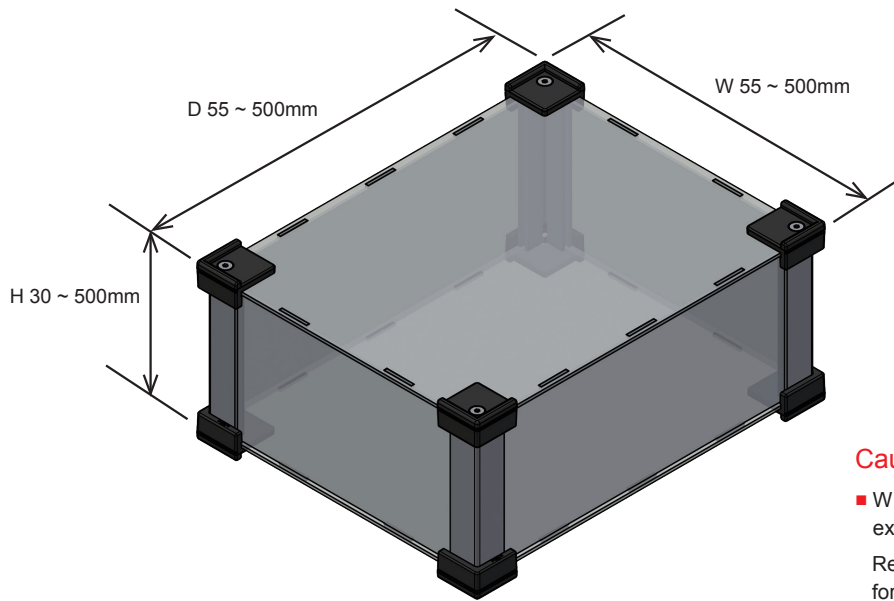
Components

No.	Part name	Pcs	Material	Color / Finish
1	Top • Bottom cover	1 each	Acrylic	Transparent
2	W panel	2	Acrylic	Transparent
3	D panel	2	Acrylic	Transparent
4	Extruded pillar	4	Extruded aluminium A6063S-T5	Silver anodized
5	Screw (Hexagonal flat head - M3 or M4)	8	Stainless steel	Unfinished
6	Corner guard	8	TPE	Black • Gray

■ Hexagonal wrench included.

1 Dimensions

To select D, W and H dimensions in 1mm intervals.



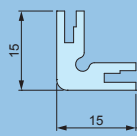
Caution

- W • H • D dimensions are the external dimensions excluding the corner guards.
Refer to DXF/DWG/PDF drawings on our website for further details.

- Panel thickness, screw sizes, and pillar types vary by W / D dimensions.
Refer to the chart on page SKGF-3 for K15 or K20 pillar type selection by W, H & D dimensions.

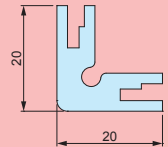
[K15] Pillar Type

Dimension : refer to chart
Panel thickness : $t = 2.0\text{mm}$
Screw size : M3
Pillar : 15 x 15mm



[K20] Pillar Type

Dimension : refer to chart
Panel thickness : $t = 3.0\text{mm}$
Screw size : M4
Pillar : 20 x 20mm



2 Color

To select color code from the table below.

Code	B Black	G Gray
Color		

Product Number

To determine a product number, fill W, H, D and select Pillar type and Color code in the following blank boxes.

Product no. SKGF - - -
1 W
1 H
1 D
1 K15 or K20
2 Color Code

Numbering example: W:100 x H:60 x D:180, K15 pillar type and G color code

➔ **SKGF100-60-180K15-G**

Lead Time

Custom Size Only
Custom Size + Hole Milling

8 business days (1 ~ 3 pcs)
9 business days (1 ~ 3 pcs)

Order Inquiry

For more information, contact us here at sales@takachi-el.co.jp

SKGF Type Chart

Refer to the below chart for K15 or K20 pillar type selection by W & D dimensions.

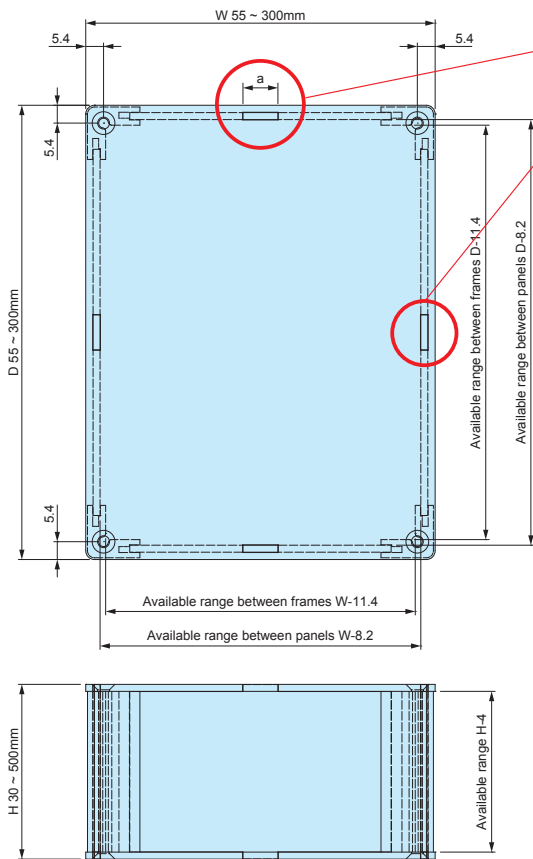
[K15] Pillar Type : t = 2.0mm • M3 screw • 15 x 15 pillar

[K20] Pillar Type : t = 3.0mm • M4 screw • 20 x 20 pillar

W	H \ D	55 ~ 100	101 ~ 150	151 ~ 200	201 ~ 250	251 ~ 300	301 ~ 350	351 ~ 400	401 ~ 450	451 ~ 500
55 ~ 100	30 ~ 100									
	101 ~ 200									
	201 ~ 300									
	301 ~ 400									
	401 ~ 500									
101 ~ 150	30 ~ 100	[K15] Pillar Type								
	101 ~ 200									
	201 ~ 300									
	301 ~ 400									
	401 ~ 500									
151 ~ 200	30 ~ 100									
	101 ~ 200									
	201 ~ 300									
	301 ~ 400									
	401 ~ 500									
201 ~ 250	30 ~ 100									
	101 ~ 200									
	201 ~ 300									
	301 ~ 400									
	401 ~ 500									
251 ~ 300	30 ~ 100									
	101 ~ 200									
	201 ~ 300									
	301 ~ 400									
	401 ~ 500									
301 ~ 350	30 ~ 100									
	101 ~ 200									
	201 ~ 300									
	301 ~ 400									
	401 ~ 500									
351 ~ 400	30 ~ 100									
	101 ~ 200									
	201 ~ 300									
	301 ~ 400									
	401 ~ 500									
401 ~ 450	30 ~ 100									
	101 ~ 200									
	201 ~ 300									
	301 ~ 400									
	401 ~ 500									
451 ~ 500	30 ~ 100									
	101 ~ 200									
	201 ~ 300									
	301 ~ 400									
	401 ~ 500									

SKGF dimensions

■ DXF/DWG/PDF drawings available on our website.

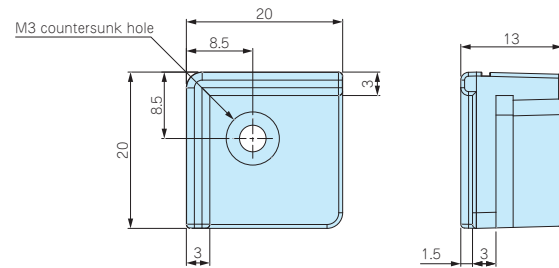
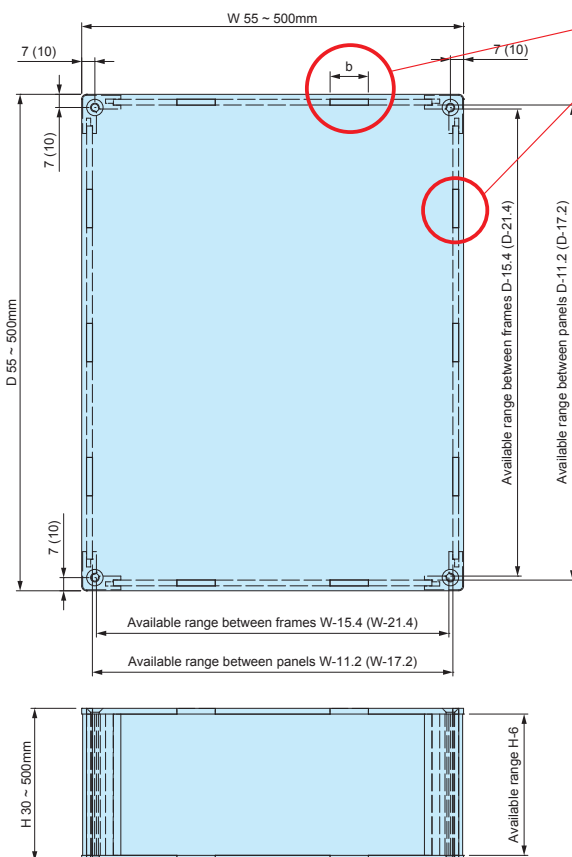
[K15] Pillar Type : t = 2.0mm • M3 screw • 15 x 15 pillar

Number of joints vary by specified W / D dimensions.
Refer to the below chart for more information.

W dimension	Joint b dimension	Number of Joints (one side)
55 ~ 100	10mm	1
101 ~ 150	20mm	1
151 ~ 200	20mm	2
201 ~ 300	20mm	3

D dimension	Joint b dimension	Number of Joints (one side)
55 ~ 100	10mm	1
101 ~ 150	20mm	1
151 ~ 200	20mm	2
201 ~ 300	20mm	3

Corner guard dimensions

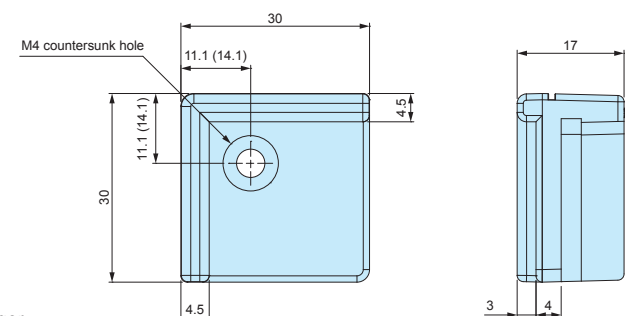
**[K20] Pillar Type : t = 3.0mm • M4 screw • 20 x 20 pillar**

Number of joints vary by specified W / D dimensions.
Refer to the below chart for more information.

W dimension	Joint b dimension	Number of Joints (one side)
55 ~ 100	10mm	1
101 ~ 150	20mm	1
151 ~ 200	20mm	2
201 ~ 300	20mm	3
301 ~ 400	20mm	4
401 ~ 500	20mm	5

D dimension	Joint b dimension	Number of Joints (one side)
55 ~ 100	10mm	1
101 ~ 150	20mm	1
151 ~ 200	20mm	2
201 ~ 300	20mm	3
301 ~ 400	20mm	4
401 ~ 500	20mm	5

Corner guard dimensions



*Available range values within () is applicable if D / W dimension is 301mm or larger.