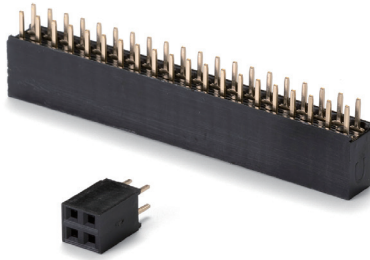
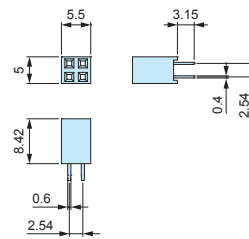


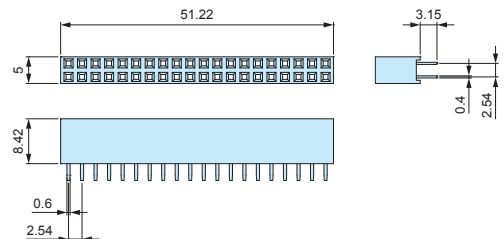
RPS series**PIN SOCKET CONNECTOR for RPCB****RPS dimensions**

RPS2-2



■ DXF/DWG/PDF drawings available on our website.

RPS2-20



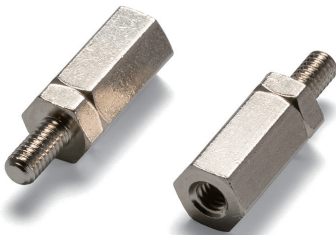
- Material / Color : (Socket) FRPBT UL94V-0 / Black • (Pin) Phosphor bronze
- 2.54mm hole-to-hole pitch pin socket connector.
Utilize with RPCB expansion PCB for Raspberry Pi series.

Technical Data

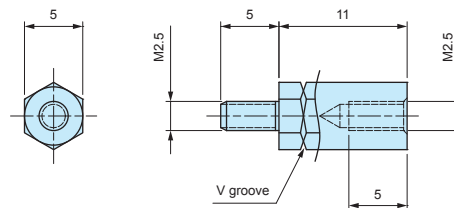
Operating temperature : -55°C ~ +105°C
 Rated voltage : DC500V
 Rated current : 1.0A

Product no. / Details

Product no.	Pin layout	Pack of
RPS2-2	4 (2 pin x 2)	1
RPS2-20	40 (20 pin x 2)	1

RPSP2.5-11**HEXAGONAL STANDOFF****RPSP2.5-11 dimensions**

■ DXF/DWG/PDF drawings available on our website.



- Material / Finish : Brass / Nickel plated
- Brass hexagonal standoff with M2.5 threads on both male and female sides.
Utilize with RPCB expansion PCB for Raspberry Pi series.

Product no. / Details

Product no.	Pack of
RPSP2.5-11	4

MT2.5-4**MOUNTING SCREW for RPSP2.5-11****MT2.5-4 dimensions**

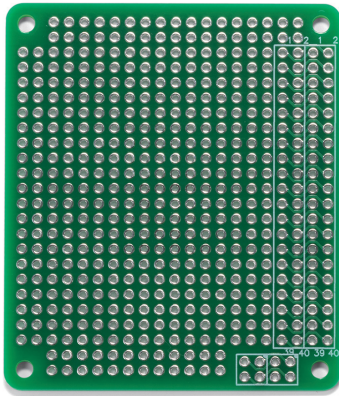
- Material / Finish : Steel / Trivalent chromate
- Utilize when affixing RPCB expansion PCB.

Product no. / Details

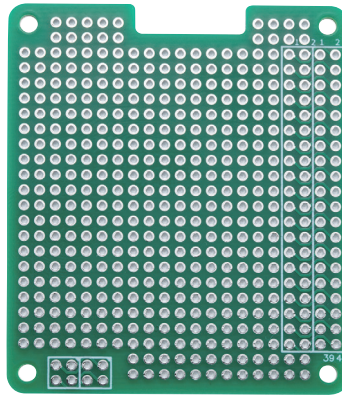
Product no.	Pack of
MT2.5-4	4

RPCB series**EXPANSION PCB for Raspberry Pi**

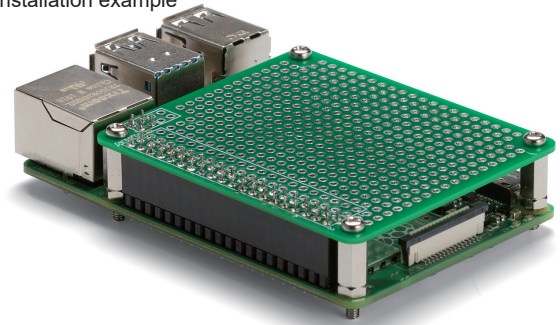
RPCB-4B



RPCB-5



Installation example



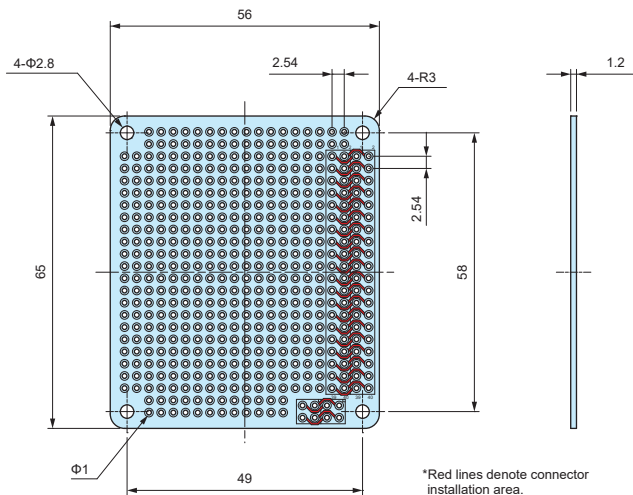
- Material / Finish : Glass epoxy (FR-4) / Through-hole - Lead-free solder resist
- Expansion PCB for standard Raspberry Pi boards. Use to install expansion parts or components.
- Environmentally friendly lead-free solder. RoHS3 compliant.

- Raspberry Pi Board is not included.
- Connector, spacer, and mounting screw set are sold separately.

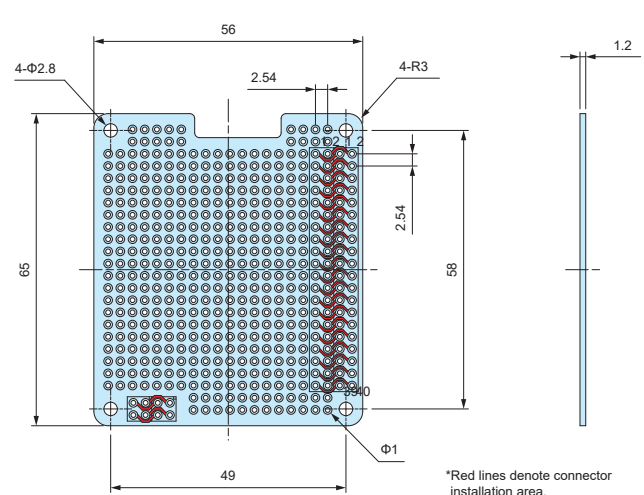
RPCB dimensions

- DXF/DWG/PDF drawings available on our website.

RPCB-4B



RPCB-5

**Product no. / Details**

Product no.	Pack of	Suitable model
RPCB-4B	1	Raspberry Pi 4B
NEW RPCB-5	1	Raspberry Pi 5

- Expansion PCB can also be utilized on RPI-4B and RPA series cases.

