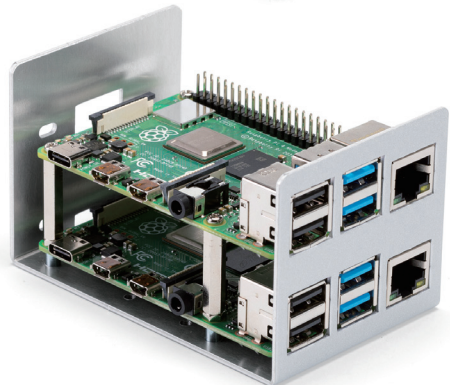
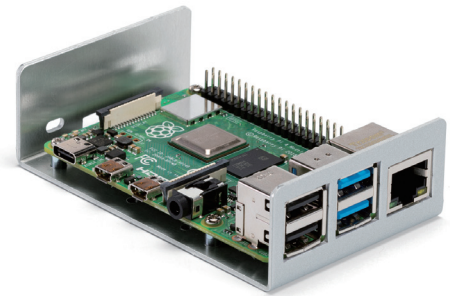
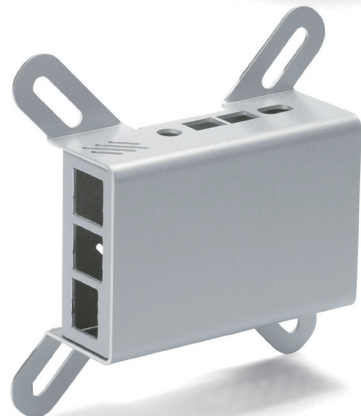




Conductive

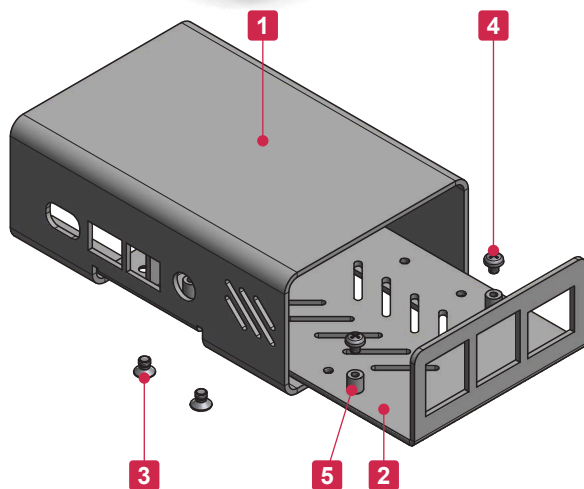


Two Raspberry Pi boards can be installed onto the RPI-2 and RPI-4B-2 models.



RPI-1F and RPI-4B-1F models are compatible with VESA Mount Standards (75 x 75mm / 100 x 100mm), and can be installed on the back side of PC displays, etc.

- Compatible with Raspberry Pi 2B, 3B, 3B+ and 4B boards.
- All aluminium, polished and elegant metallic silver finish.
- 3 different types - Single desktop, Dual desktop, and Single flanged - are available.
- Conductive internal surface.
- Raspberry Pi Board is not included.



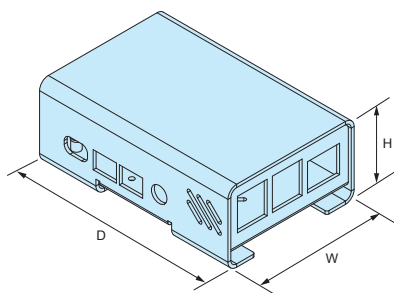
Components

No.	Part name	Pcs	Material	Color / Finish
1	Cover	1	Aluminium A1100P t=1.5	Metallic silver / Painted (Conductive inside)
2	Base	1	Aluminium A1100P t=1.5	Metallic silver / Painted (Conductive inside)
3	Screw (M3-4 flat head)	4	Steel	Trivalent chromate
4	Screw for Board (M2.5-4 pan head)	4	Steel	Trivalent chromate
5	Clinching standoff	4	Steel	Galvanized trivalent

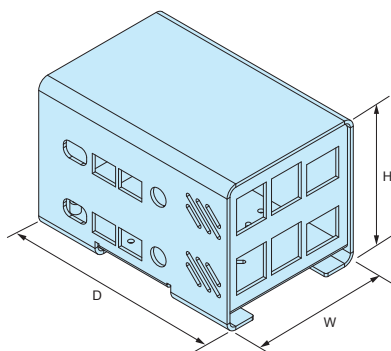
RPI dimensions

■ DXF/DWG/PDF/STP drawings available on our website.

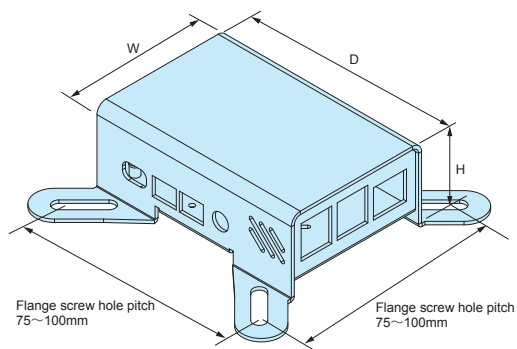
RPI-1, RPI-4B-1 (Single)



RPI-2, RPI-4B-2 (Dual)



RPI-1F, RPI-4B-1F (Flanged)



Product no. / Details

Product no.	External dimensions			Type	Included accessory	Compatible board	Weight (g)
	W	H	D				
RPI-1	65	37	95	Single desktop	Rubber feet	Raspberry Pi 2B/3B/3B+	90.5
RPI-4B-1	65	37	97	Single desktop	Rubber feet	Raspberry Pi 4B	91.5
RPI-2	65	65	95	Dual desktop	Rubber feet Hexagonal spacer (M2.5-25)	Raspberry Pi 2B/3B/3B+	136
RPI-4B-2	65	65	97	Dual desktop	Rubber feet Hexagonal spacer (M2.5-25)	Raspberry Pi 4B	138.8
RPI-1F	65	37	95	Single flanged	—	Raspberry Pi 2B/3B/3B+	91.5
RPI-4B-1F	65	37	97	Single flanged	—	Raspberry Pi 4B	93.8

■ Rubber feet : Synthetic rubber / Black • Hexagonal spacer : Brass / Nickel plated

Raspberry Pi Case Customization

Unique Logo (Inkjet print, Engraving)

See page Custom-7~10, as well as our website for further details.

Various print processing methods are available, with no Minimum Order Quantity requirement!



Color Anodization • Painting

See page Custom-15~16, as well as our website for further details.



Raspberry Pi HEAT-SINK ALUMINIUM CASE

Made with Aluminium Diecast Material

for Excellent Heat Dissipation and Rigidity

Exceptional Functionality with Superb Cost Efficiency!

Now available
for
Raspberry Pi 5

RPH series



3 different types are available: Desktop, Flanged and DIN Rail

Desktop type
RPH-5
RPH-4B



Flanged type
RPH-5-F
RPH-4B-F



DIN Rail type
RPHD-5
RPHD-4B



Available in metallic silver and black
for Raspberry Pi 4 Model B and Raspberry
Pi 5.

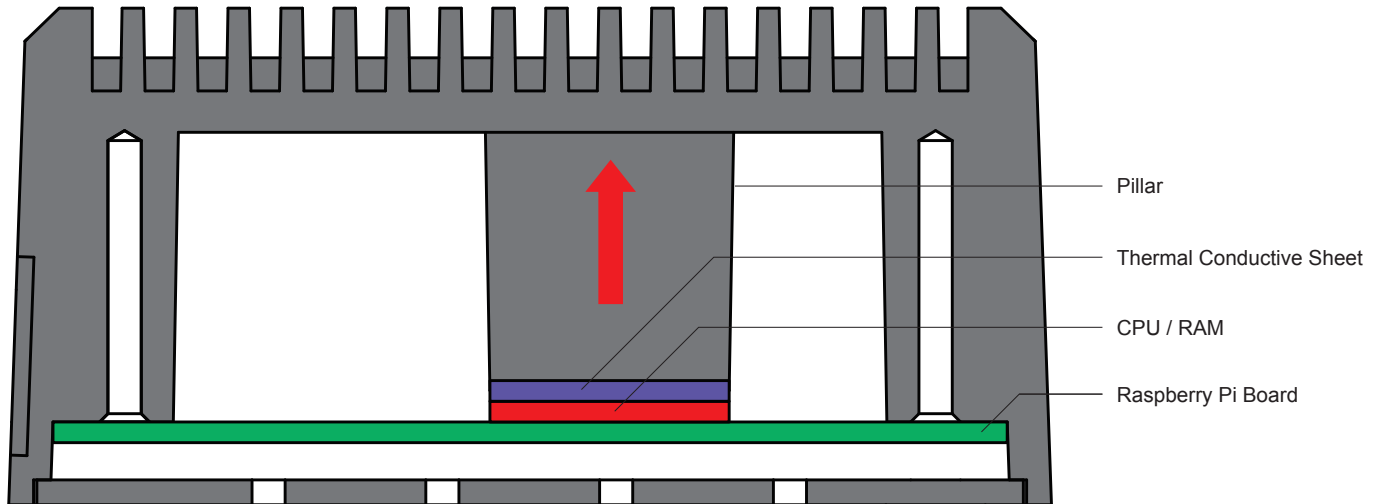
Compatible with VESA Mount Standards
(75 x 75mm / 100 x 100mm), and can be
installed on the back side of PC displays, etc.

Available with DIN Rail mounting bracket.
Perfect for mounting on control panels
or switchboards.

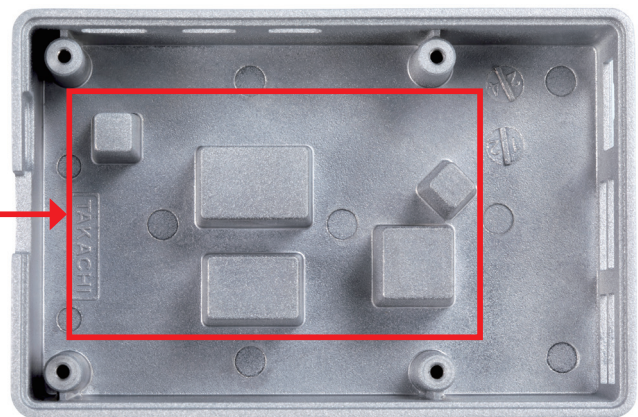
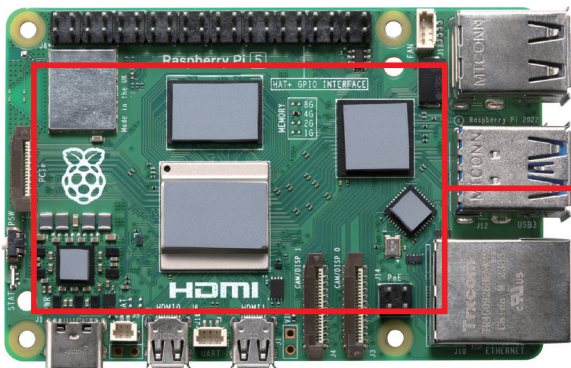
Efficient Heat Dissipation Construct to Maximize your Raspberry Pi Performance!



Heat Dissipation



- Attach thermal conductive sheet onto CPU and RAM. Heat is transferred to the heat-sink cover through the pillar.



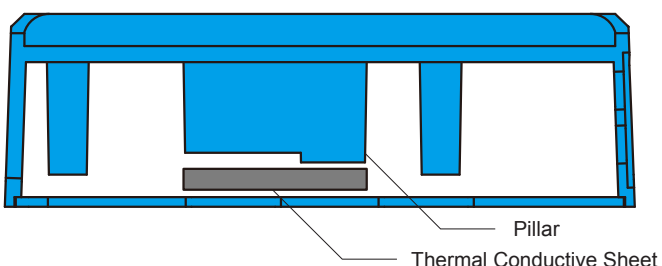
*The model shown above is for Raspberry Pi 5. The model for Raspberry Pi 4 model B has a different configuration.

2 different Heat dissipation types and Normal type are available.

*The Pillar and the Thermal Conductive Sheet configuration varies by models.

RPH-5-H (Heat dissipation)
RPH-4B-H (Heat dissipation)

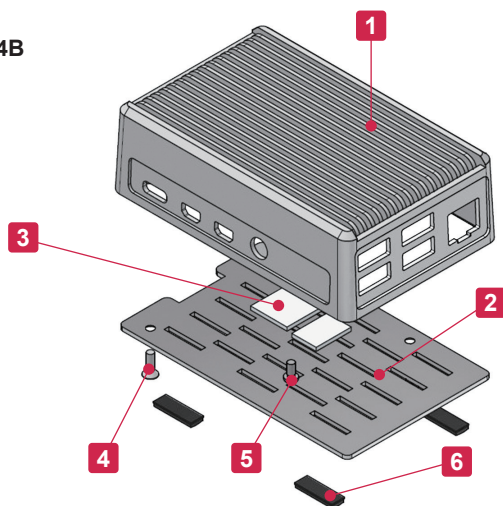
RPH-4B-N (Normal)



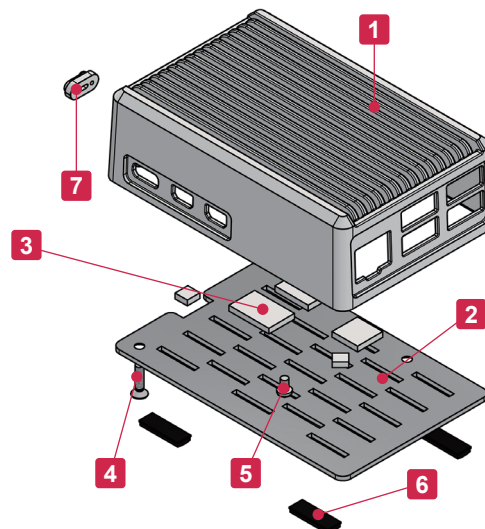
Heat
Resistant

- New RPH-5-H • FH model compatible with Raspberry Pi 5 is now available.
- Heat-sink top cover case exclusively for use with the Raspberry Pi.
Equipped with highly efficient heat-sink top cover.
- Constructed using diecast aluminium for strength and rigidity.
- The Heat dissipation type is available for both the Pi 4B and 5, while the Normal type is only available for the Pi 4B.
- Both Pi 4B and 5 are available in a Desktop and Flanged wall mount configuration.
Flanged wall mount type is compatible with VESA Mount Standards (75 x 75mm / 100 x 100mm) and can be installed on the back side of PC displays, etc.
- Raspberry Pi board is not included.
- Note that oil bleed may occur with thermal conductive sheets.

RPH-4B



RPH-5



Components

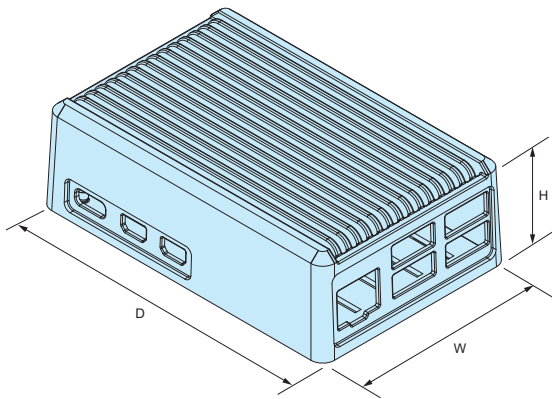
No.	Part name	Pcs	Material	Color / Finish
1	Top cover	1	Diecast aluminium ADC12	Silver • Black / Painted
2	Base	1	Aluminium A1100P t=1.5	Metallic silver / Painted (Conductive inside) • Black / Painted
3	Thermal conductive sheet (RPH-4B-H type only)	2	Silicone polymer + Ceramic composite	Gray
	Thermal conductive sheet (RPH-5 type only)	5	Silicone	Gray
4	Screw (M2.5-10 flat head)	2	Steel	Trivalent chromate • Black trivalent chromate
5	Screw for Board (M2.5-4 pan head)	2	Steel	Trivalent chromate
6	Rubber feet *	4	Polyurethane	Black
7	Power button access cap	1	Polycarbonate	Transparent

* Not applicable to flanged models.

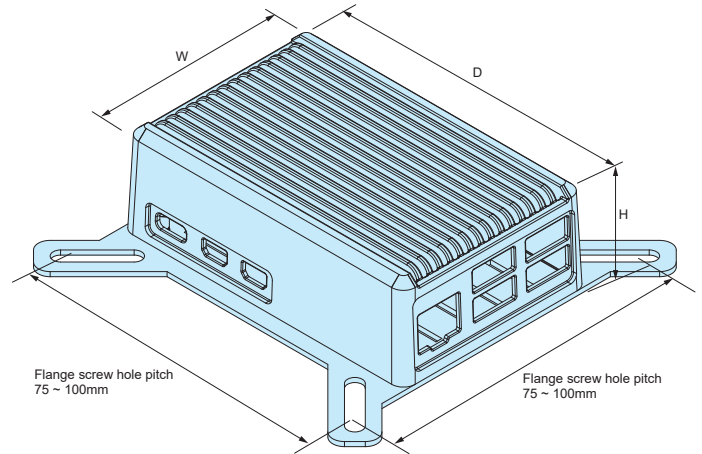
RPH dimensions

■ DXF/DWG/PDF/STP drawings available on our website.

RPH-5-H, RPH-4B-H, RPH-4B-N (Desktop)



RPH-5-FH, RPH-4B-FH, RPH-4B-FN (Flanged)



Product no. / Details

Product no.		External dimensions			Type	Included accessory	※Thermal resistance rate (°C/W)	Weight (g)
● Silver	● Black	W	H	D				
NEW RPH-5-H-S	NEW RPH-5-H-B	63	30	96	Desktop Heat dissipation	Rubber feet Thermal conductive sheets	7.41	165.5
RPH-4B-H-S	RPH-4B-H-B	63	30	98	Desktop Heat dissipation	Rubber feet Thermal conductive sheets	7.31	159.9
RPH-4B-N-S	RPH-4B-N-B	63	30	98	Desktop Normal	Rubber feet	7.31	142
NEW RPH-5-FH-S	NEW RPH-5-FH-B	63	31.5	96	Flanged Heat dissipation	Thermal conductive sheets	7.41	174.2
RPH-4B-FH-S	RPH-4B-FH-B	63	31.5	98	Flanged Heat dissipation	Thermal conductive sheets	7.31	168.2
RPH-4B-FN-S	RPH-4B-FN-B	63	31.5	98	Flanged Normal	—	7.31	150.3

※ Thermal resistance test condition

- Ambient air cooling.
- Heat-sink fins are set perpendicular to the ground with temperature at 60°C.
- Powder coated aluminium diecast.
- Heat source is applied on the opposite side (inner side) of the fins.

Temperature measurement test

Raspberry Pi board is placed into the RPH-H model and a commercially available Raspberry Pi plastic case.

Temperature is measured after 6 hours of continuous operation.

*Results will vary depending on usage period and environment. Listed values are in-house test reference values only.



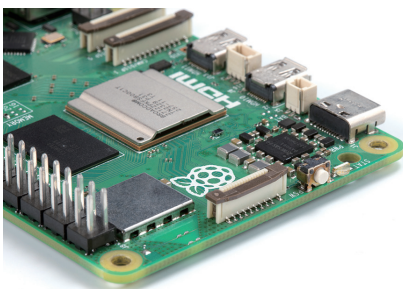
RPH-H
CPU Temperature : 45.7°C

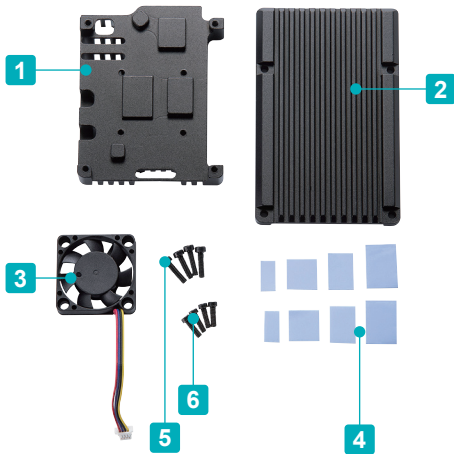
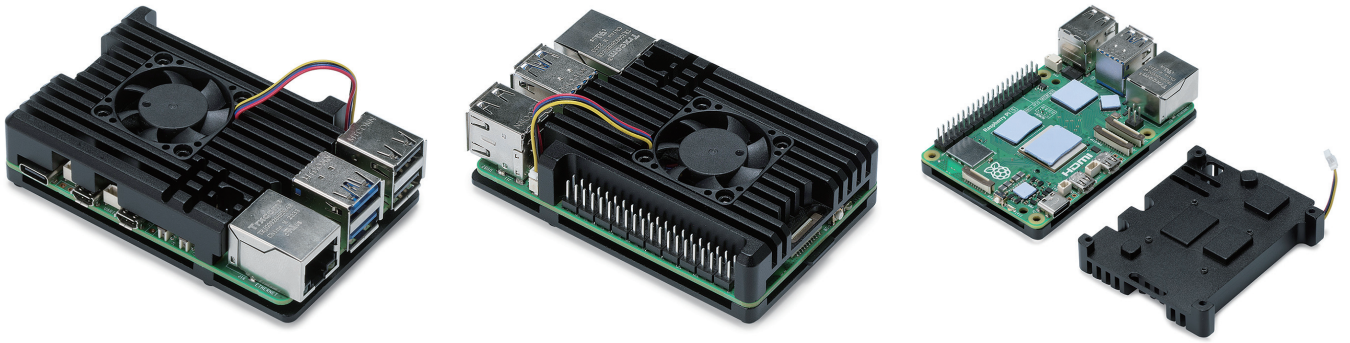


Plastic case
CPU Temperature : 58.4°C

Power button for Raspberry Pi 5

In conjunction with the addition of a power button to the Raspberry Pi 5 board, RPH-5-H and RPH-5-FH models come with a cover for the power button.



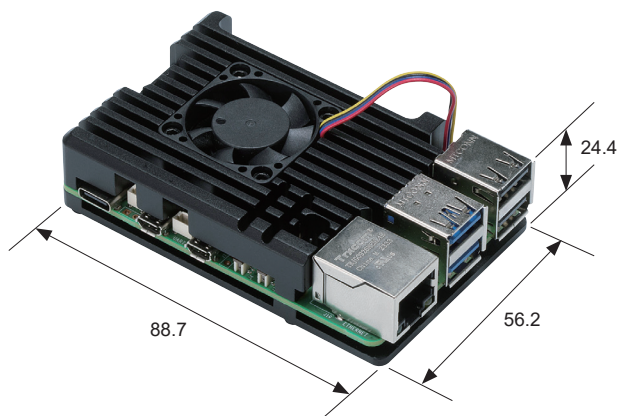
RPF-5**Raspberry Pi 5 HEATSINK CASE with COOLING FAN**

- Heatsink case with cooling fan for Raspberry Pi 5.
- Equipped with a highly efficient heat-sink top cover and thermal conductive sheets.
- Raspberry Pi board is not included.

Components

No.	Part name	Pcs	Material	Color / Finish
1	Cover	1	Aluminium	Black / Anodized
2	Base	1	Aluminium	Black / Anodized
3	Fan	1	Plastic	Black
4	Thermal conductive sheet	8*	Silicone	Blue
5	Screw	4	Steel	Black
6	Screw for fan	4	Steel	Black

*4 out of 8 pieces are spares.

RPF-5 dimensions

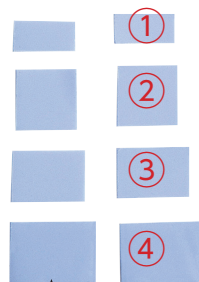
*Value above includes the dimensions of the PCB board.

Product no. / Details

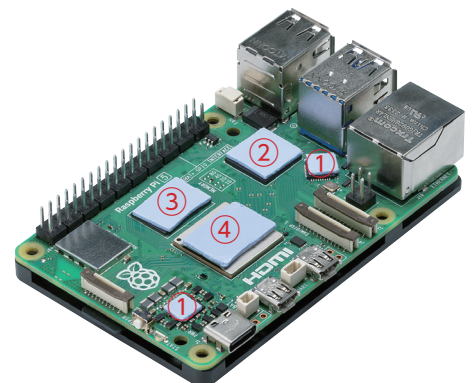
Product no.	Weight (g)
RPF-5	102.4

Where to paste the thermal conductive sheets.

Cut ① to half before using.



4 spare sheets included.

**RPF-5**

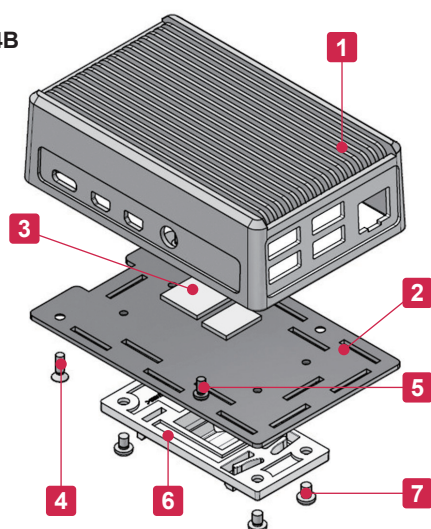
Heat
Resistant

- New RPHD-5H-S model compatible with Raspberry Pi 5 is now available.
- DIN Rail mount heat-sink case exclusively for use with Raspberry Pi 4 model B and Raspberry Pi 5. Equipped with highly efficient heat-sink top cover.
- Constructed using diecast aluminium for strength and rigidity.
- The Heat dissipation type is available for both the Pi 4B and 5, while the Normal type is only available for the Pi 4B.
- Raspberry Pi board is not included.
- Note that oil bleed may occur with thermal conductive sheets.

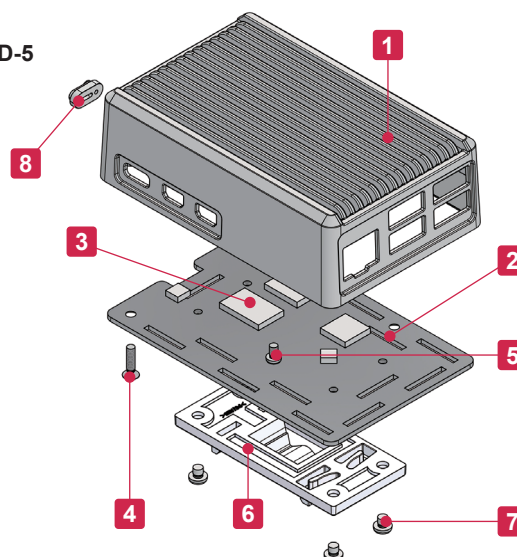
Technical Data

Max load : 300g
Operating Temperature : -20°C ~ +80°C

RPHD-4B



RPHD-5

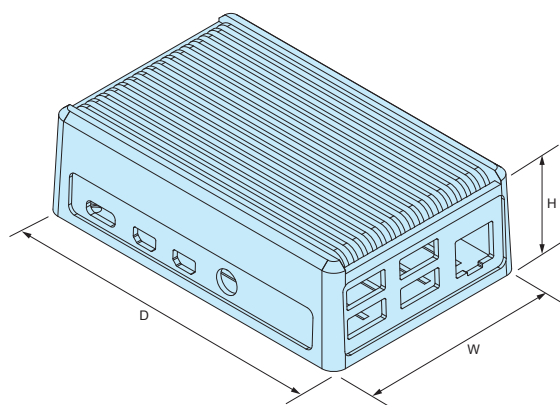


Components

No.	Part name	Pcs	Material	Color / Finish
1	Top cover	1	Diecast aluminium ADC12	Silver / Painted
2	Base	1	Aluminium A1100P t=1.5	Metallic silver / Painted (Conductive inside)
3	Thermal conductive sheet (RPHD-4B-H)	2	Silicone polymer + Ceramic composite	Gray
	Thermal conductive sheet (RPHD-5-H)	5	Silicone	Gray
4	Screw (M2.5-10 flat head)	2	Steel	Trivalent chromate
5	Screw for Board (M2.5-4 pan head)	2	Steel	Trivalent chromate
6	Din-rail mounting base	1	PC • ABS UL94V-0	Light gray
7	Screw for Din-rail mounting base (M3-3 pan head)	4	Steel	Trivalent chromate
8	Power button access cap (RPHD-5)	1	Polycarbonate	Transparent

RPHD dimensions

■ DXF/DWG/PDF/STP drawings available on our website.



Product no. / Details

Product no.	External dimensions			Pillar Thermal conductive sheets	※Thermal resistance rate (°C/W)	Weight (g)
	W	H	D			
NEW RPHD-5-H-S	63	30	96	○	7.41	173.4
RPHD-4B-H-S	63	30	98	○	7.31	168.2
RPHD-4B-N-S	63	30	98	×	7.31	150.7

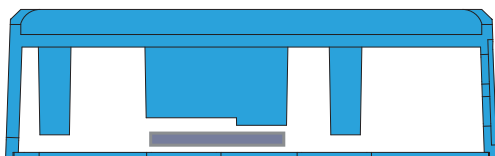
*Din-rail mounting base height is not included in H dimension.

※ Thermal resistance test condition

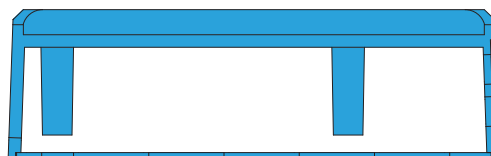
- Ambient air cooling.
- Heat-sink fins are set perpendicular to the ground with temperature at 60°C.
- Powder coated aluminium diecast.
- Heat source is applied on the opposite side (inner side) of the fins.

■ 2 different Heat Dissipation types and Normal type are available.

RPHD-5-H, RPHD-4B-H (Heat dissipation)

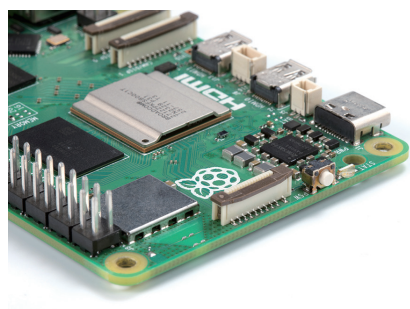


RPHD-4B-N (Normal)



Power button for Raspberry Pi 5

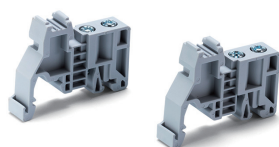
In conjunction with the addition of a power button to the Raspberry Pi 5 board, RPHD-5-H-S model comes with a cover for the power button.



Accessories (Optional parts)



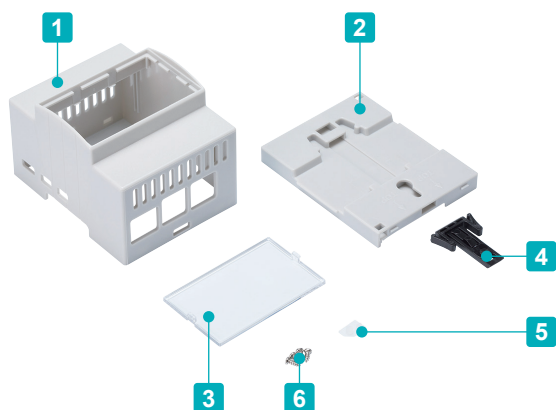
DIN Rail FDR series
See page 100



Economical DIN Rail end stopper DRS series
See page 99



DIN Rail terminal block end stopper TKR series
See page 99



- DIN rail mount case exclusively for use with the Raspberry Pi 5.
Able to assemble easily with a flathead screw driver; no screws required.
*Caution : Material may easily break when assembling.

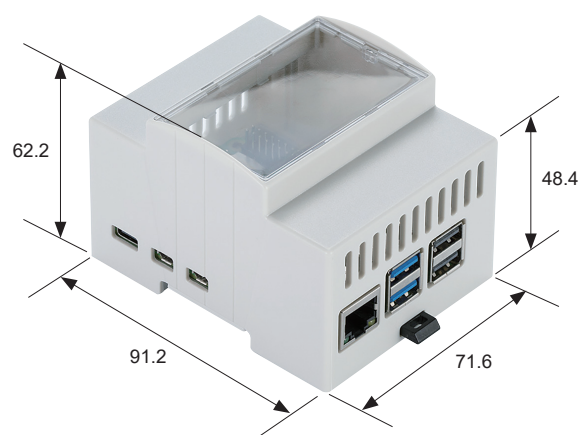
- Raspberry Pi board is not included.

Components

No.	Part name	Pcs	Material	Color / Finish
1	Body	1	ABS	Gray
2	Base	1	ABS	Gray
3	Front panel	1	ABS	Transparent
4	Lever	1	ABS	Black
5	Transparent window	1	Acrylic	Translucent
6	Screw for Board	4*	Steel	Silver

*2 out of 4 pieces are spares.

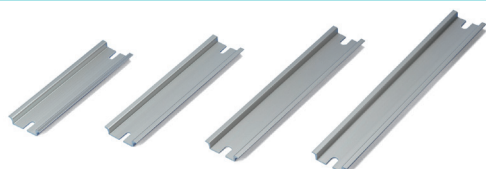
RPDM-5 dimensions



Product no. / Details

Product no.	Weight (g)
RPDM-5	63.7

Accessories (Optional parts)

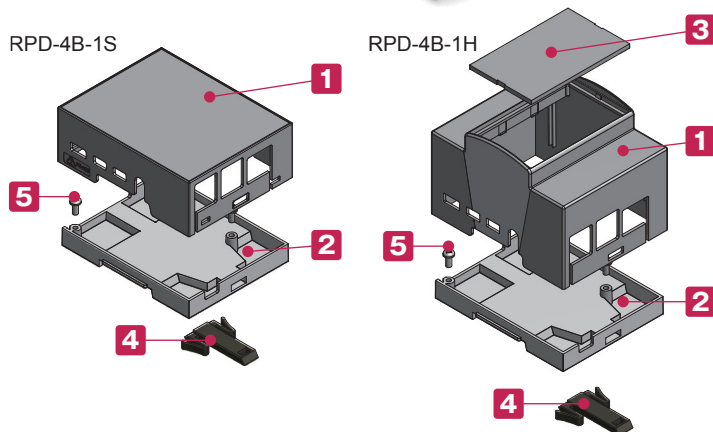


DIN RAIL
FDR series
See page FDR-1 ~ FDR-2



RPD-4B-1S

RPD-4B-1H



■ Exclusively for use with Raspberry Pi 4B.

■ Exclusively for use with 35mm DIN rail.

Able to assemble easily with a flathead screwdriver;
no screws required.

*Caution : Material may easily break when assembling.

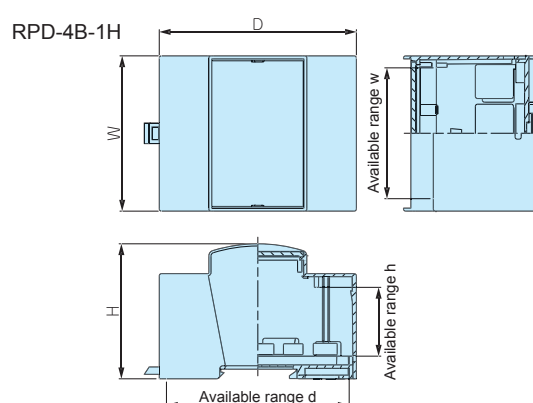
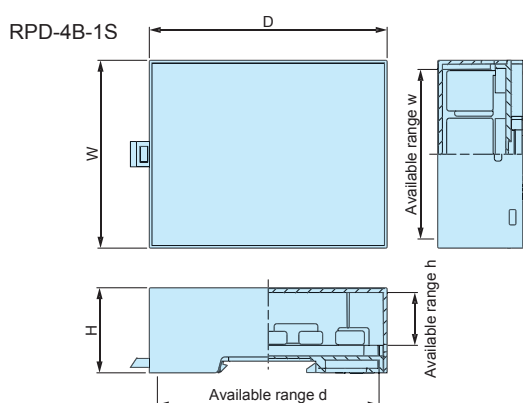
■ Raspberry Pi Board is excluded.

Components

No.	Part name	Pcs	Material	Color / Finish
1	Body	1	PC + ABS	Gray
2	Base	1	PC + ABS	Gray
3	Front panel (RPD-4B-1H only)	1	Polycarbonate t = 2.0	Transparent
4	Hook	1	PPO	Black
5	Screw for Board (M3-6)	2	Stainless steel	Unfinished

RPD dimensions

■ Drawings below are reference examples only.
DXF/DWG/PDF drawings available on our website.



Product no. / Dimensions

Product no.	Dimensions						Weight (g)
	W	H	D	w	h	d	
RPD-4B-1S	71.1	32.2	90	64.1	20.1	83.9	46.8
RPD-4B-1H	71.3	62	90.5	60.3	31.7	83.9	68.1

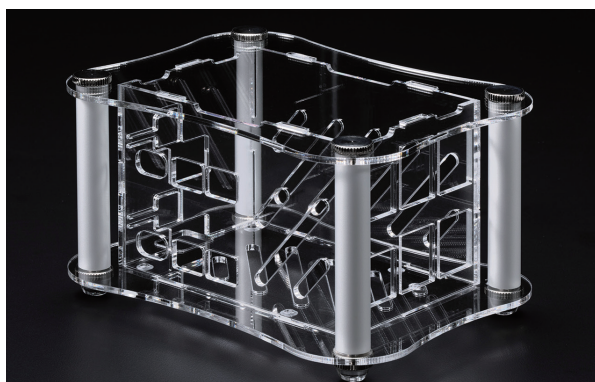
TAKACHI ELECTRONICS ENCLOSURE CO., LTD.

3-21-16 Higashi-ryoke,
Kawaguchi, Saitama 332-0003, JAPAN
Tel. +81-48-222-5409

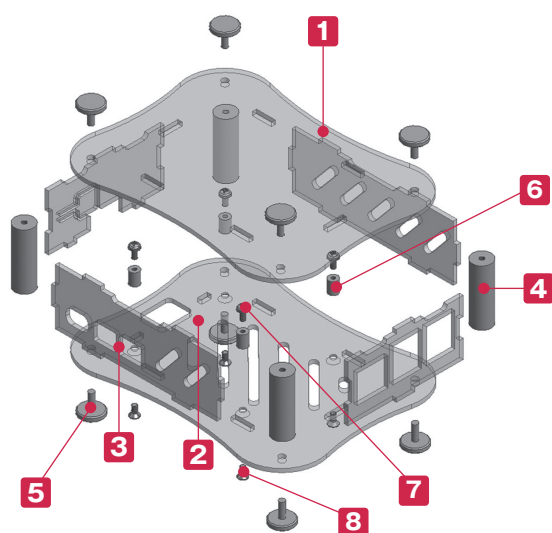
www.takachi-enclosure.com

sales@takachi-el.co.jp

● All items listed in this catalogue are compliant with EU RoHS 10 standard.



RPA-4B-1F is compatible with VESA Mount Standards (100 x 100mm), and can be installed on the back side of PC displays, etc.



- Exclusively for use with Raspberry Pi models.
- 3 different types - Single desktop, Dual desktop, and Single flanged - are available.
- New size for Raspberry Pi 5 is now available.
- The panel power button part may easily bend when the board is not installed.
- Raspberry Pi board is not included.

※Ethanol or other alcoholic solvents may cause the acrylic panel to crack.
Use a neutral cleaner or specialized acrylic cleaning solvent for cleaning.

Technical Data

Operating temperature : -30°C ~ +60°C

※Included screws :

RPA-4B • 5-1 Knurled thumb screw x 8

RPA-4B • 5-2 Knurled thumb screw x 8

RPA-4B • 5-1F Knurled thumb screw x 4

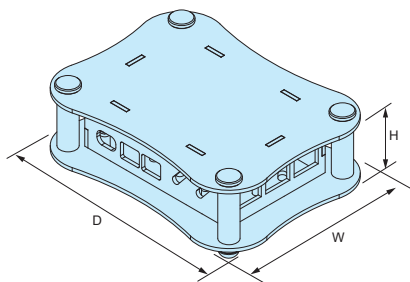
M3-8 flat head, Trivalent chromate x 4

Components

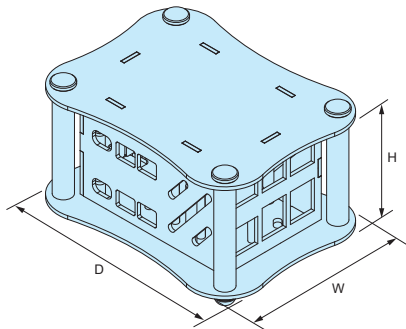
No.	Part name	Pcs	Material	Color / Finish
1	Top cover	1	Acrylic t=2.0	Transparent
2	Bottom cover	1	Acrylic t=2.0	Transparent
3	Panel	4	Acrylic t=2.0	Transparent
4	Pillar	4	Extruded aluminium A6063S-T5	Silver / Anodized with clear coating
5	Knurled thumb screw (M3-8)※	4 / 8	Brass	Nickel plated
6	Standoff (for board)	4	Brass	Nickel plated
7	Screw for Board (M2.5-4 pan head)	4	Steel	Trivalent chromate
8	Screw for Standoffs (M2.5-5 flat head)	4	Steel	Trivalent chromate

RPA dimensions

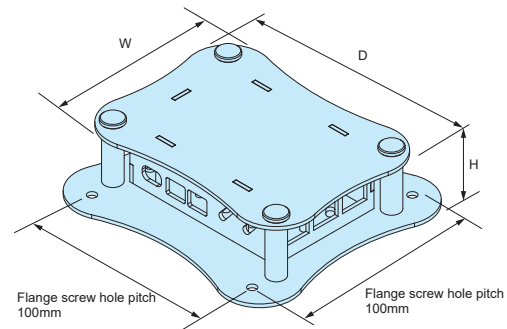
RPA-4B-1
RPA-5-1 (Single desktop)



RPA-4B-2
RPA-5-2 (Dual desktop)



RPA-4B-1F
RPA-5-1F (Single flanged)



■ DXF/DWG/PDF/STP drawings available on our website.

Product no. / Details

Product no.	External Dimension			Suitable model	Included accessory	Weight(g)
	W	H	D			
RPA-4B-1	95	34	125	Raspberry Pi 4B	Rubber feet	118
NEW RPA-5-1	95	34	125	Raspberry Pi 5	Rubber feet	113.5
RPA-4B-2	95	62	125	Raspberry Pi 4B	Rubber feet Round spacer (M2.5-25)	171.5
NEW RPA-5-2	95	62	125	Raspberry Pi 5	Rubber feet Round spacer (M2.5-25)	166.5
RPA-4B-1F	95	34	125	Raspberry Pi 4B	—	118.5
NEW RPA-5-1F	95	34	125	Raspberry Pi 5	—	113.5

■ Rubber feet : Synthetic rubber / Semi-transparent • Round spacer : Brass / Nickel plated

Raspberry Pi Case Customization

Unique Logo (Inkjet printing)

See page Custom-7~8, as well as our website for further details.

Various print processing methods are available, with no Minimum Order Quantity requirement!



Color Variation

Available in different color types, as well as smoked / tinted shades.

