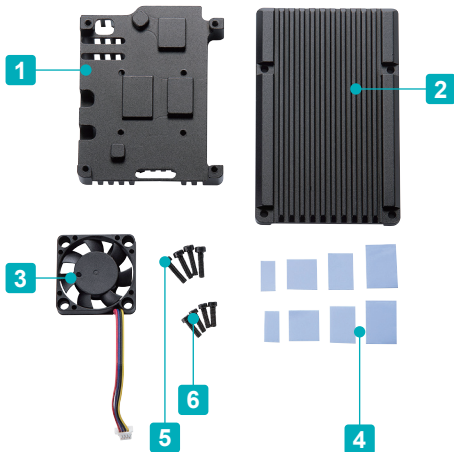
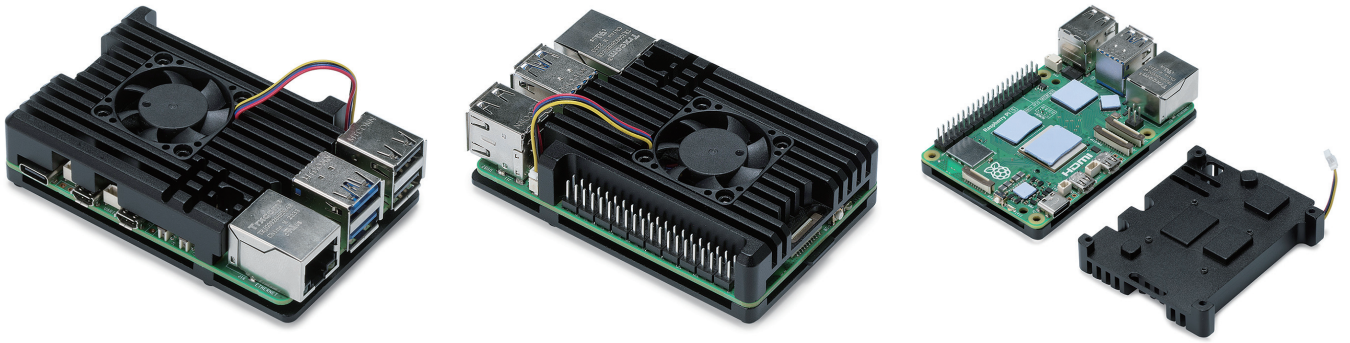


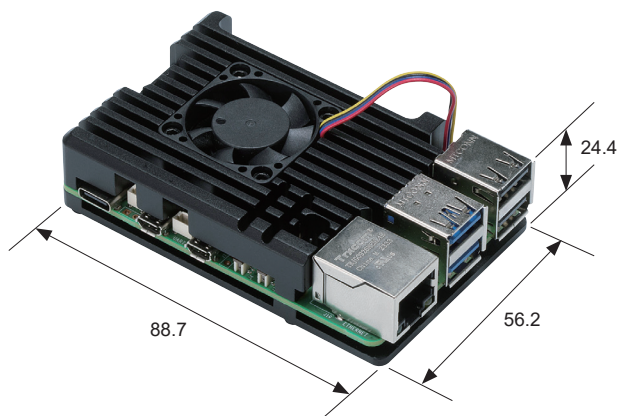
RPF-5**Raspberry Pi 5 HEATSINK CASE with COOLING FAN**

- Heatsink case with cooling fan for Raspberry Pi 5.
- Equipped with a highly efficient heat-sink top cover and thermal conductive sheets.
- Raspberry Pi board is not included.

Components

No.	Part name	Pcs	Material	Color / Finish
1	Cover	1	Aluminium	Black / Anodized
2	Base	1	Aluminium	Black / Anodized
3	Fan	1	Plastic	Black
4	Thermal conductive sheet	8*	Silicone	Blue
5	Screw	4	Steel	Black
6	Screw for fan	4	Steel	Black

*4 out of 8 pieces are spares.

RPF-5 dimensions

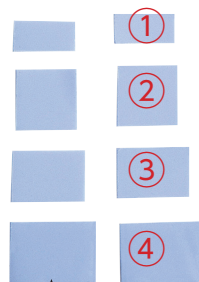
*Value above includes the dimensions of the PCB board.

Product no. / Details

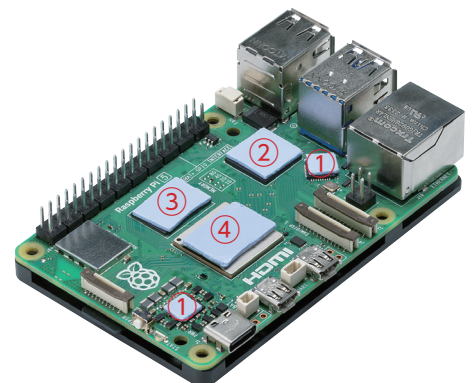
Product no.	Weight (g)
RPF-5	102.4

Where to paste the thermal conductive sheets.

Cut ① to half before using.

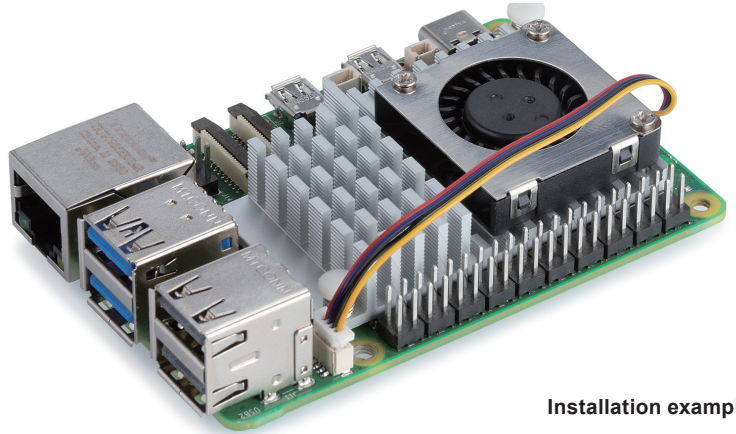
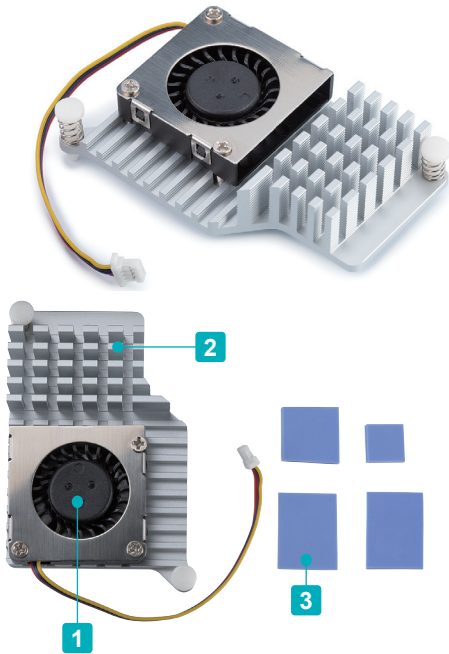


4 spare sheets included.

**RPF-5**

RP5-FAN

Raspberry Pi 5 ACTIVE COOLER



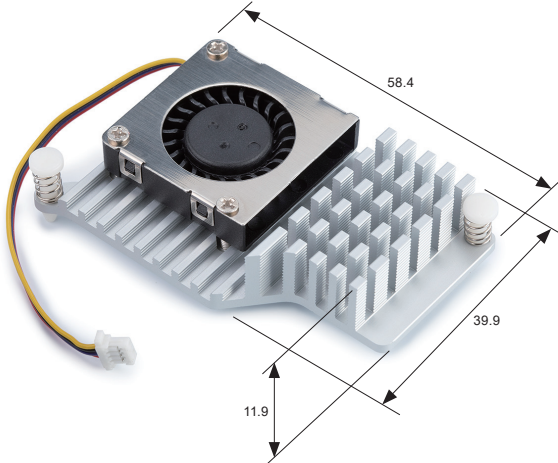
Installation example

- Active cooler for standard Raspberry Pi 5 board.
- Excellent cooling effect while operating.
- Can be directly attached onto the Raspberry Pi Board.
- Raspberry Pi board is not included.

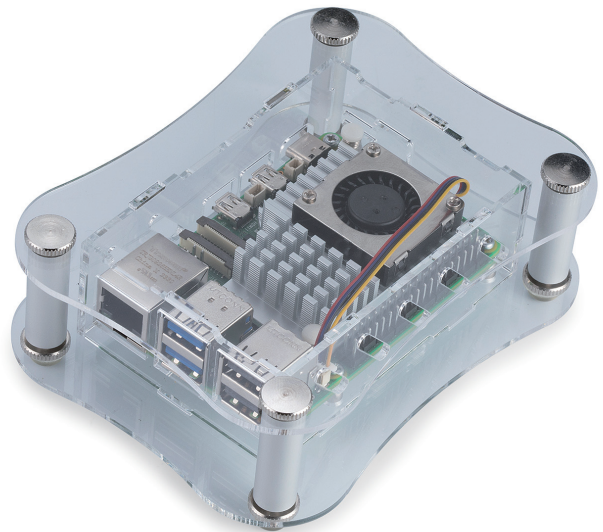
Components

No.	Part name	Pcs	Material	Color / Finish
1	Fan	1	Plastic	Black
2	Heat-sink	1	Aluminium	Silver / Anodized
3	Thermal conductive sheet	4	Silicone	Blue

RP5-FAN dimensions



- Raspberry Pi 5 ACTIVE COOLER is compatible with RPA-5 series.



Product no. / Details

Product no.	Weight (g)
RP5-FAN	24

Temperature Measurement Test Comparison Chart

Measured temperatures up to 3 hours after Raspberry Pi 5 has been switched on.
*Values listed below are for reference only; values are subject to change by the environment and the usage.

• CPU temperature comparison chart

Model	RPF-5	RP5-FAN	RPA-5+RP5-FAN	RPA-5 Only	PCB Only
Time	Temperature (°C)				
After 1 hour	47.2	58.2	67.0	84.5	76.8
After 2 hours	47.7	58.2	62.6	84.5	76.3
After 3 hours	47.7	58.2	65.3	86.2	76.8