

- DIN rail mount case exclusively for use with the Raspberry Pi 5.
Able to assemble easily with a flathead screw driver; no screws required.
*Caution : Material may easily break when assembling.

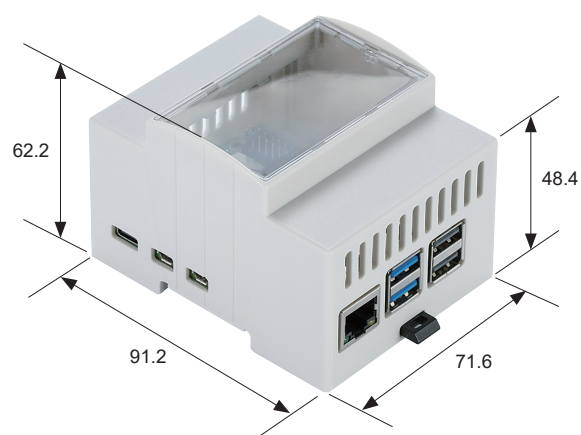
- Raspberry Pi board is not included.

Components

No.	Part name	Pcs	Material	Color / Finish
1	Body	1	ABS	Gray
2	Base	1	ABS	Gray
3	Front panel	1	ABS	Transparent
4	Lever	1	ABS	Black
5	Transparent window	1	Acrylic	Translucent
6	Screw for Board	4*	Steel	Silver

*2 out of 4 pieces are spares.

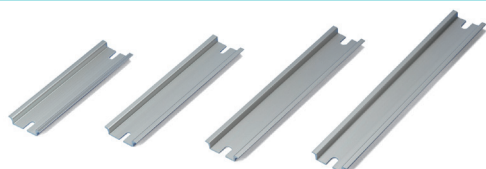
RPDM-5 dimensions



Product no. / Details

Product no.	Weight (g)
RPDM-5	63.7

Accessories (Optional parts)

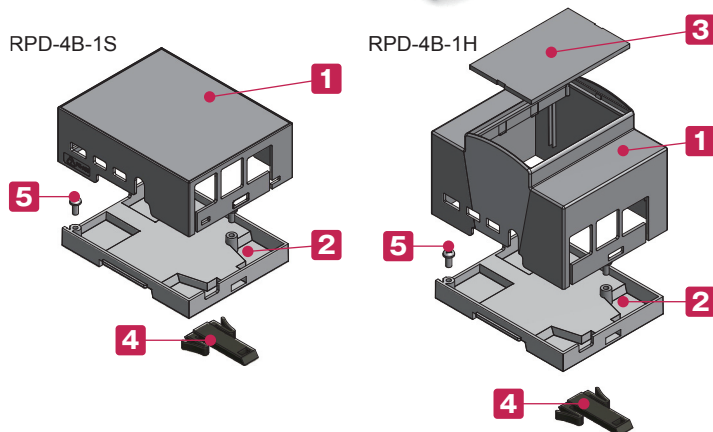


DIN RAIL
FDR series
See page FDR-1 ~ FDR-2



RPD-4B-1S

RPD-4B-1H



■ Exclusively for use with Raspberry Pi 4B.

■ Exclusively for use with 35mm DIN rail.

Able to assemble easily with a flathead screwdriver;
no screws required.

*Caution : Material may easily break when assembling.

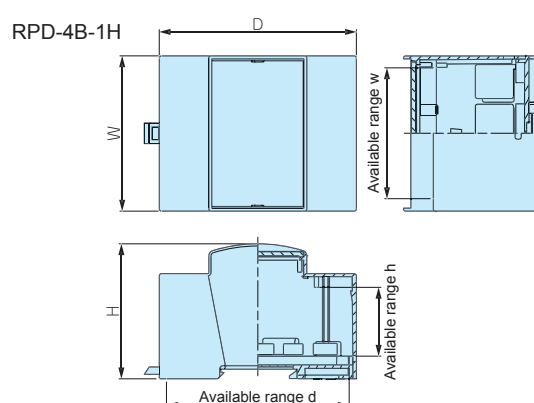
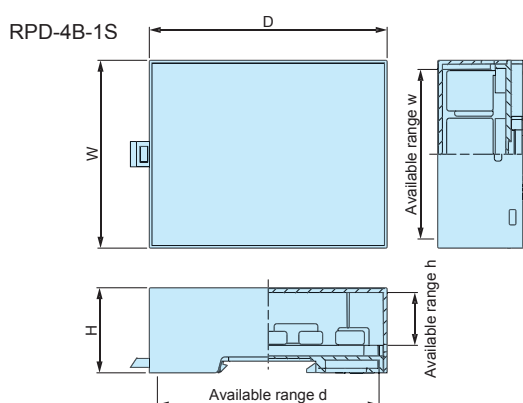
■ Raspberry Pi Board is excluded.

Components

No.	Part name	Pcs	Material	Color / Finish
1	Body	1	PC + ABS	Gray
2	Base	1	PC + ABS	Gray
3	Front panel (RPD-4B-1H only)	1	Polycarbonate t = 2.0	Transparent
4	Hook	1	PPO	Black
5	Screw for Board (M3-6)	2	Stainless steel	Unfinished

RPD dimensions

■ Drawings below are reference examples only.
DXF/DWG/PDF drawings available on our website.



Product no. / Dimensions

Product no.	Dimensions						Weight (g)
	W	H	D	w	h	d	
RPD-4B-1S	71.1	32.2	90	64.1	20.1	83.9	46.8
RPD-4B-1H	71.3	62	90.5	60.3	31.7	83.9	68.1

TAKACHI ELECTRONICS ENCLOSURE CO., LTD.

3-21-16 Higashi-ryoke,
Kawaguchi, Saitama 332-0003, JAPAN
Tel. +81-48-222-5409

www.takachi-enclosure.com

sales@takachi-el.co.jp

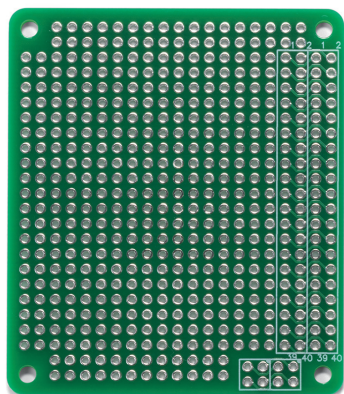
● All items listed in this catalogue are compliant with EU RoHS 10 standard.

RPCB series

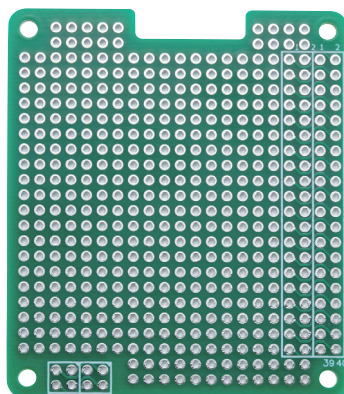
EXPANSION PCB for Raspberry Pi



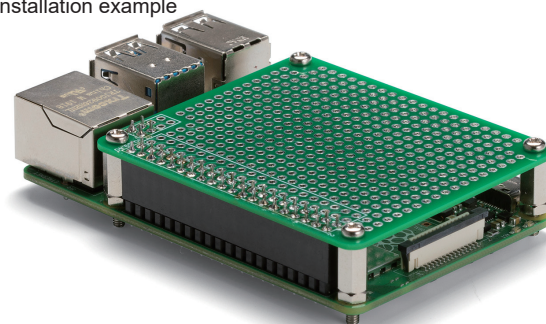
RPCB-4B



RPCB-5



Installation example



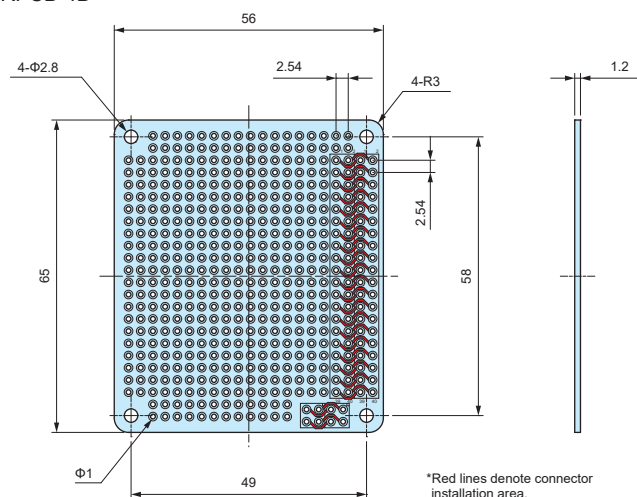
- Material / Finish : Glass epoxy (FR-4) / Through-hole - Lead-free solder resist
- Expansion PCB for standard Raspberry Pi boards. Use to install expansion parts or components.
- Environmentally friendly lead-free solder. RoHS3 compliant.

- Raspberry Pi Board is not included.
- Connector, spacer, and mounting screw set are sold separately.

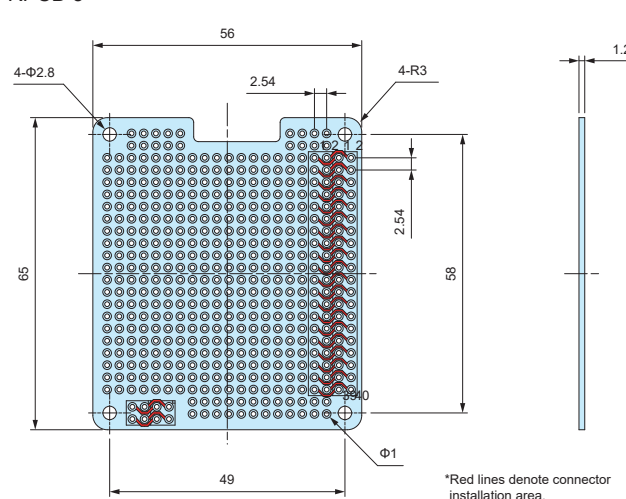
RPCB dimensions

- DXF/DWG/PDF drawings available on our website.

RPCB-4B

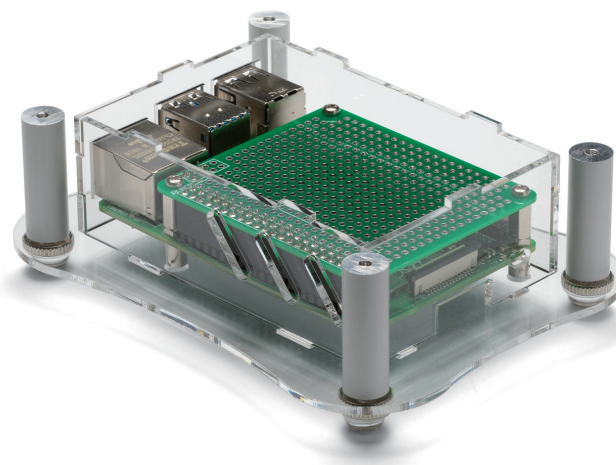
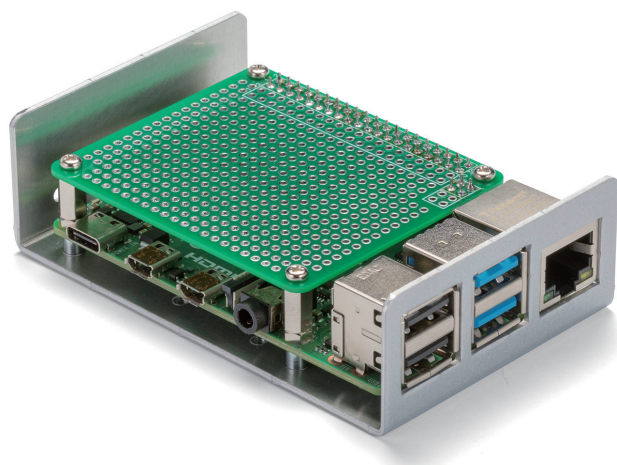


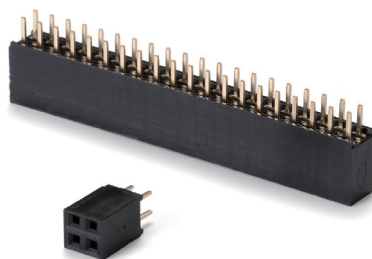
RPCB-5

**Product no. / Details**

Product no.	Pack of	Suitable model
RPCB-4B	1	Raspberry Pi 4B
NEW RPCB-5	1	Raspberry Pi 5

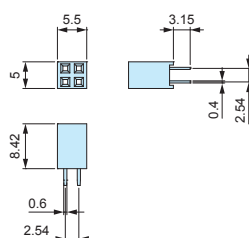
- Expansion PCB can also be utilized on RPI-4B and RPA series cases.



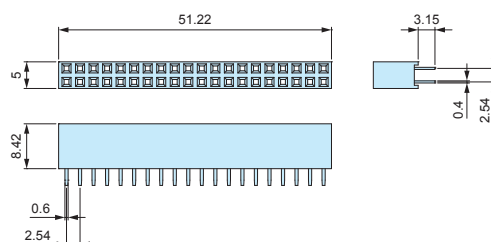
RPS series**PIN SOCKET CONNECTOR for RPCB****RPS dimensions**

■ DXF/DWG/PDF drawings available on our website.

RPS2-2



RPS2-20



■ Material / Color : (Socket) FRPBT UL94V-0 / Black • (Pin) Phosphor bronze

■ 2.54mm hole-to-hole pitch pin socket connector.

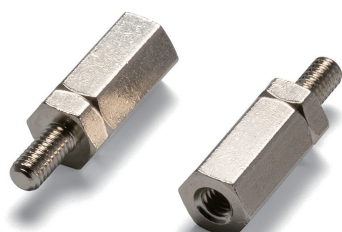
Utilize with RPCB expansion PCB for Raspberry Pi series.

Technical Data

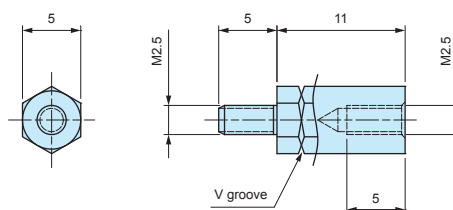
Operating temperature : -55°C ~ +105°C
 Rated voltage : DC500V
 Rated current : 1.0A

Product no. / Details

Product no.	Pin layout	Pack of
RPS2-2	4 (2 pin x 2)	1
RPS2-20	40 (20 pin x 2)	1

RPSP2.5-11**HEXAGONAL STANDOFF****RPSP2.5-11 dimensions**

■ DXF/DWG/PDF drawings available on our website.



■ Material / Finish : Brass / Nickel plated

■ Brass hexagonal standoff with M2.5 threads on both male and female sides.

Utilize with RPCB expansion PCB for Raspberry Pi series.

Product no. / Details

Product no.	Pack of
RPSP2.5-11	4

MT2.5-4**MOUNTING SCREW for RPSP2.5-11****MT2.5-4 dimensions**

■ Material / Finish : Steel / Trivalent chromate

■ Utilize when affixing RPCB expansion PCB.

Product no. / Details

Product no.	Pack of
MT2.5-4	4