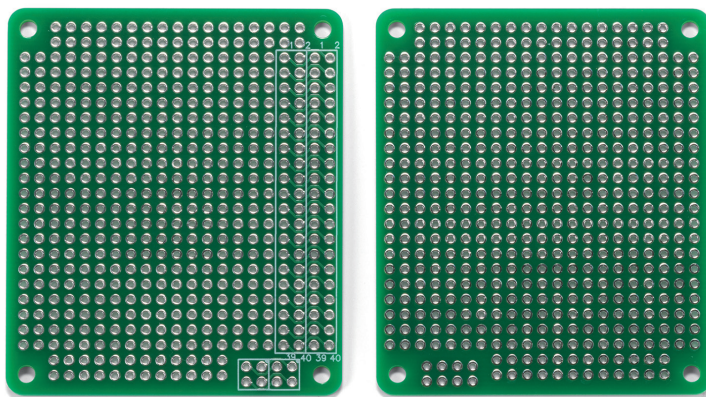
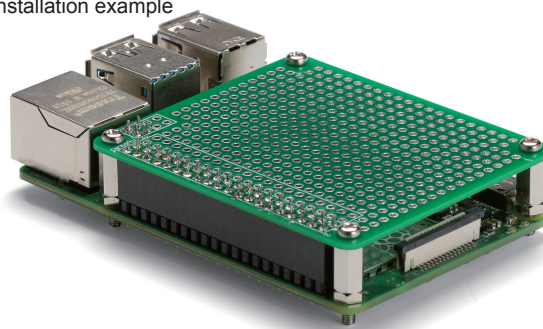


**RPCB-4B****EXPANSION PCB for Raspberry Pi 4B**

Installation example



■ Material / Finish : Glass epoxy (FR-4) / Through-hole - Lead-free solder resist

■ Expansion PCB for standard Raspberry Pi 4B boards. Use to install expansion parts or components.

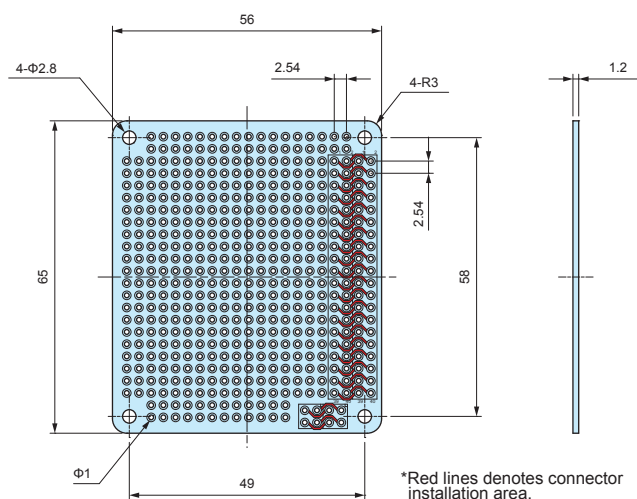
■ Environmentally friendly lead-free solder. RoHS3 compliant.

■ Raspberry Pi Board is not included.

■ Connector, standoff, and mounting screw set are sold separately.

**RPCB-4B dimensions**

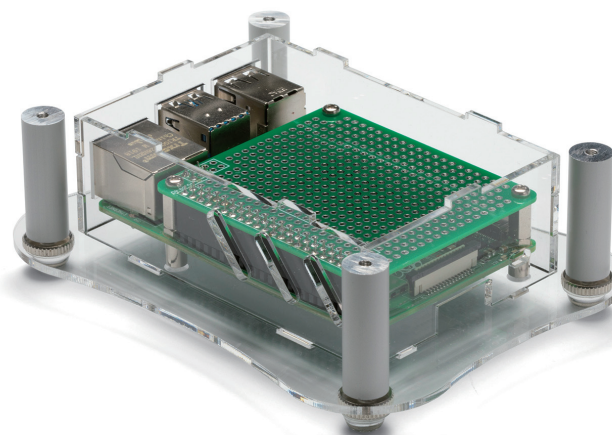
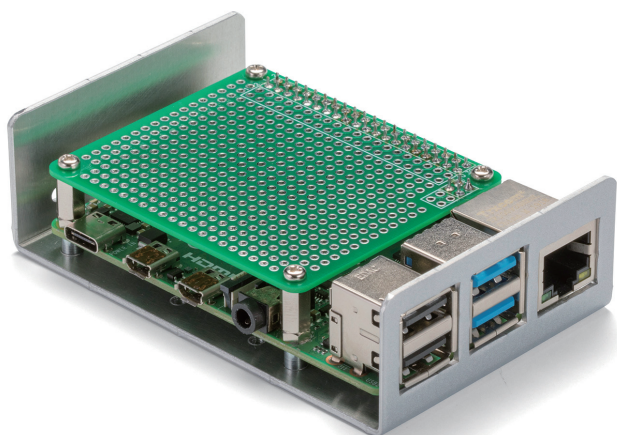
■ DXF/DWG/PDF drawings available on our website.

**Product no.**

Product no.	Pack of
RPCB-4B	1

■ Expansion PCB can also be utilized on RPI-4B and RPA series cases.

See page 132 ~ 134 for RPI series case and page 135 ~ 136 for RPA series case.



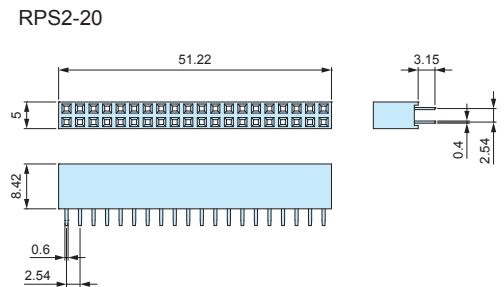
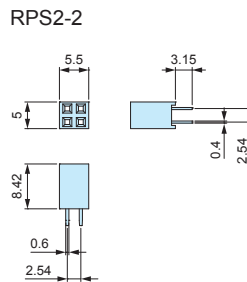
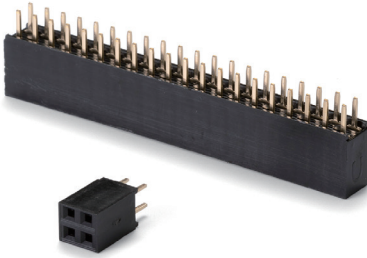
**RPS** series

## PIN SOCKET CONNECTOR for RPCB-4B



## RPS dimensions

■ DXF/DWG/PDF drawings available on our website.



- Material / Color : (Socket) FRPBT UL94V-0 /Black • (Pin) Phosphor bronze
- 2.54mm hole-to-hole pitch pin socket connector.  
Utilize with RPCB-4B expansion PCB for Raspberry Pi 4B.

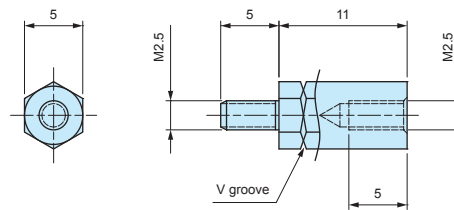
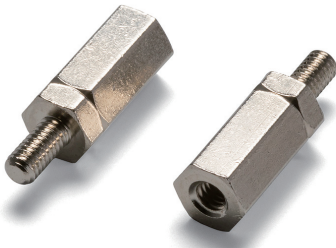
- 2.54mm hole-to-hole pitch pin socket connector.  
Utilize with RPCB-4B expansion PCB for Raspberry Pi 4B.

## Product no.

Product no.	Pin layout	Pack of
RPS2-2	4 (2 pin x 2)	1
RPS2-20	40 (20 pin x 2)	1

# RPSP2.5-11

## HEXAGONAL STANDOFF



- Material / Finish : Brass / Nickel plated
- Brass hexagonal standoff with M2.5 threads on both male and female sides. Utilize with RPCB-4B expansion PCB for Raspberry Pi 4B.

- Brass hexagonal standoff with M2.5 threads on both male and female sides. Utilize with RPCB-4B expansion PCB for Raspberry Pi 4B.

## Product no.

Product no.	Pack of
RPSP2.5-11	4

# MT2.5-4

## MOUNTING SCREW for RPSP2.5-11



## MT2.5-4 dimensions



- Material / Finish : Steel / Trivalent chromate
- Utilize when affixing RPCB-4B expansion PCB.

- Utilize when affixing RPCB-4B expansion PCB.

## Product no.

Product no.	Pack of
MT2 5-4	4