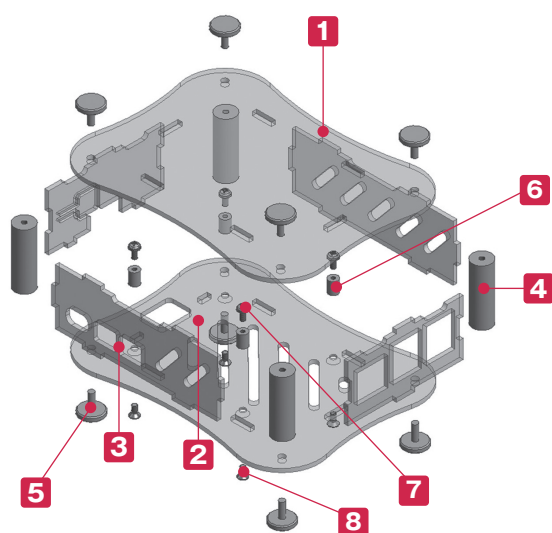


RPA-4B-1F is compatible with VESA Mount Standards (100 x 100mm), and can be installed on the back side of PC displays, etc.



- Exclusively for use with Raspberry Pi models.
- 3 different types - Single desktop, Dual desktop, and Single flanged - are available.
- New size for Raspberry Pi 5 is now available.
- The panel power button part may easily bend when the board is not installed.
- Raspberry Pi board is not included.

※Ethanol or other alcoholic solvents may cause the acrylic panel to crack.  
Use a neutral cleaner or specialized acrylic cleaning solvent for cleaning.

#### Technical Data

Operating temperature : -30°C ~ +60°C

※Included screws :

RPA-4B • 5-1 Knurled thumb screw x 8

RPA-4B • 5-2 Knurled thumb screw x 8

RPA-4B • 5-1F Knurled thumb screw x 4

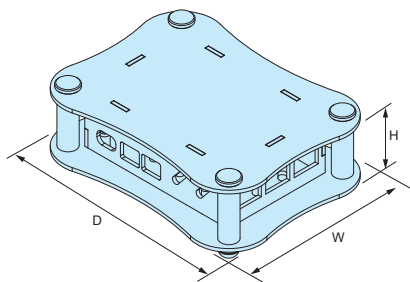
M3-8 flat head, Trivalent chromate x 4

#### Components

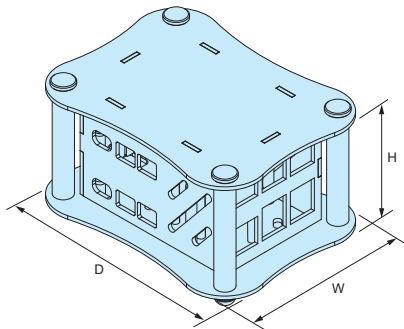
No.	Part name	Pcs	Material	Color / Finish
1	Top cover	1	Acrylic t=2.0	Transparent
2	Bottom cover	1	Acrylic t=2.0	Transparent
3	Panel	4	Acrylic t=2.0	Transparent
4	Pillar	4	Extruded aluminium A6063S-T5	Silver / Anodized with clear coating
5	Knurled thumb screw (M3-8)※	4 / 8	Brass	Nickel plated
6	Standoff (for board)	4	Brass	Nickel plated
7	Screw for Board (M2.5-4 pan head)	4	Steel	Trivalent chromate
8	Screw for Standoffs (M2.5-5 flat head)	4	Steel	Trivalent chromate

## RPA dimensions

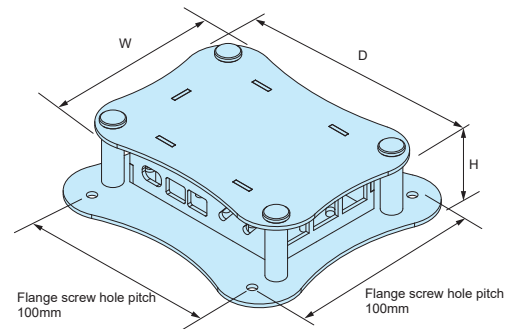
RPA-4B-1  
RPA-5-1 (Single desktop)



RPA-4B-2  
RPA-5-2 (Dual desktop)



RPA-4B-1F  
RPA-5-1F (Single flanged)



■ DXF/DWG/PDF/STP drawings available on our website.

### Product no. / Details

Product no.	External Dimension			Suitable model	Included accessory	Weight(g)
	W	H	D			
RPA-4B-1	95	34	125	Raspberry Pi 4B	Rubber feet	118
<b>NEW</b> RPA-5-1	95	34	125	Raspberry Pi 5	Rubber feet	113.5
RPA-4B-2	95	62	125	Raspberry Pi 4B	Rubber feet Round spacer (M2.5-25)	171.5
<b>NEW</b> RPA-5-2	95	62	125	Raspberry Pi 5	Rubber feet Round spacer (M2.5-25)	166.5
RPA-4B-1F	95	34	125	Raspberry Pi 4B	—	118.5
<b>NEW</b> RPA-5-1F	95	34	125	Raspberry Pi 5	—	113.5

■ Rubber feet : Synthetic rubber / Semi-transparent • Round spacer : Brass / Nickel plated

# Raspberry Pi Case Customization

Unique Logo (Inkjet printing)

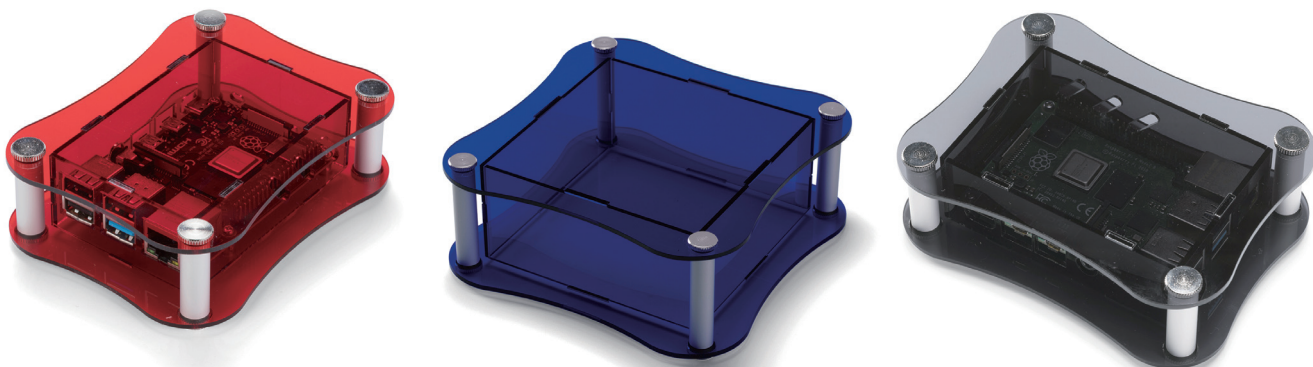
See page Custom-7~8, as well as our website for further details.

Various print processing methods are available, with no Minimum Order Quantity requirement!



## Color Variation

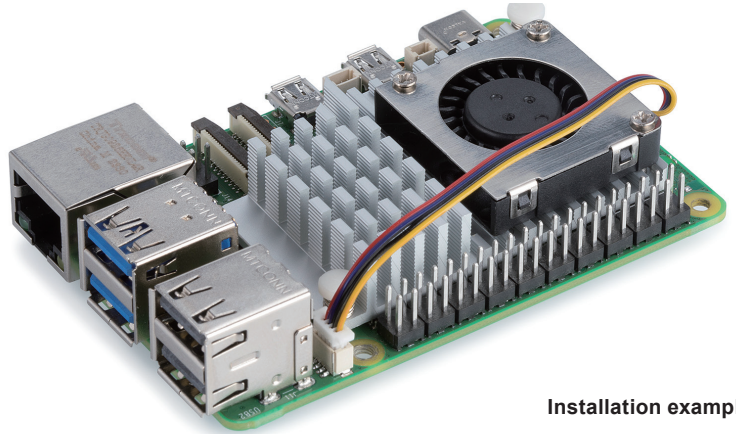
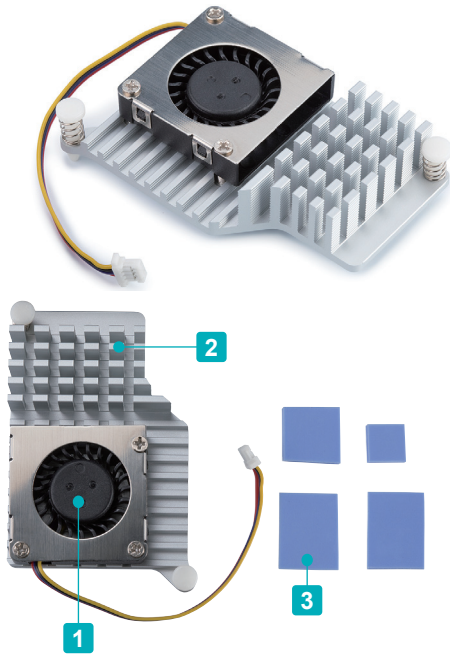
Available in different color types, as well as smoked / tinted shades.





# RP5-FAN

# Raspberry Pi 5 ACTIVE COOLER



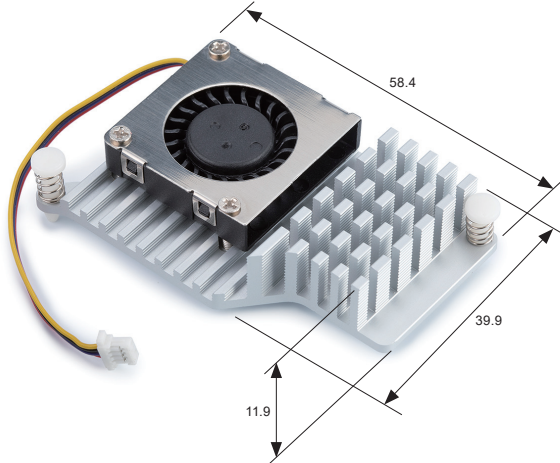
Installation example

- Active cooler for standard Raspberry Pi 5 board.
- Excellent cooling effect while operating.
- Can be directly attached onto the Raspberry Pi Board.
- Raspberry Pi board is not included.

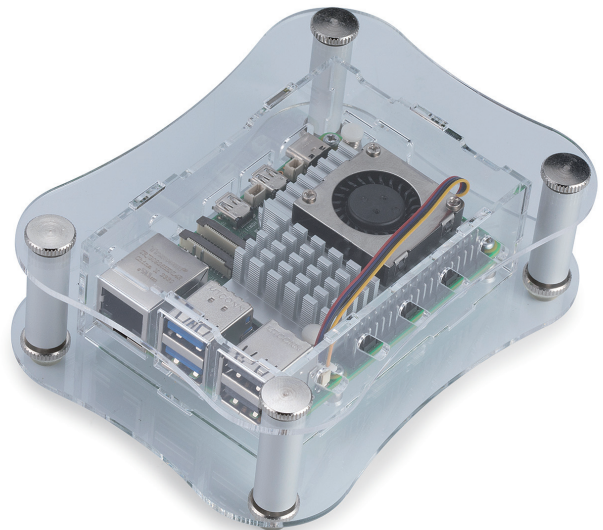
## Components

No.	Part name	Pcs	Material	Color / Finish
1	Fan	1	Plastic	Black
2	Heat-sink	1	Aluminium	Silver / Anodized
3	Thermal conductive sheet	4	Silicone	Blue

## RP5-FAN dimensions



- Raspberry Pi 5 ACTIVE COOLER is compatible with RPA-5 series.



## Product no. / Details

Product no.	Weight (g)
RP5-FAN	24

## Temperature Measurement Test Comparison Chart

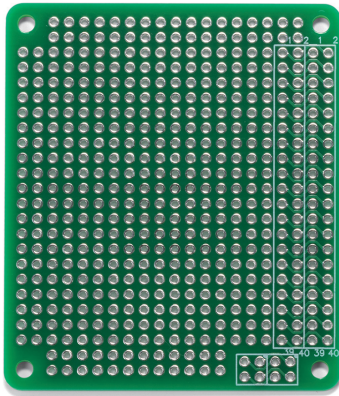
Measured temperatures up to 3 hours after Raspberry Pi 5 has been switched on.  
\*Values listed below are for reference only; values are subject to change by the environment and the usage.

### • CPU temperature comparison chart

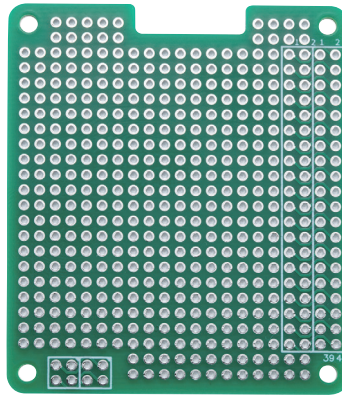
Model	RPF-5	RP5-FAN	RPA-5+RP5-FAN	RPA-5 Only	PCB Only
Time	Temperature (°C)				
After 1 hour	47.2	58.2	67.0	84.5	76.8
After 2 hours	47.7	58.2	62.6	84.5	76.3
After 3 hours	47.7	58.2	65.3	86.2	76.8

**RPCB** series**EXPANSION PCB for Raspberry Pi**

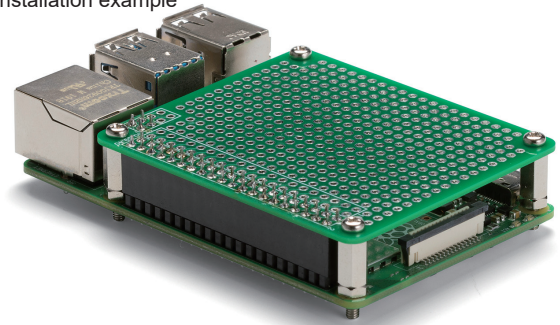
RPCB-4B



RPCB-5



Installation example



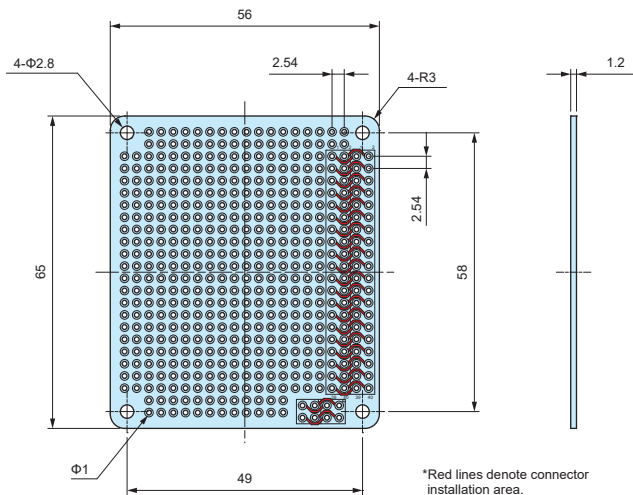
- Material / Finish : Glass epoxy (FR-4) / Through-hole - Lead-free solder resist
- Expansion PCB for standard Raspberry Pi boards. Use to install expansion parts or components.
- Environmentally friendly lead-free solder. RoHS3 compliant.

- Raspberry Pi Board is not included.
- Connector, spacer, and mounting screw set are sold separately.

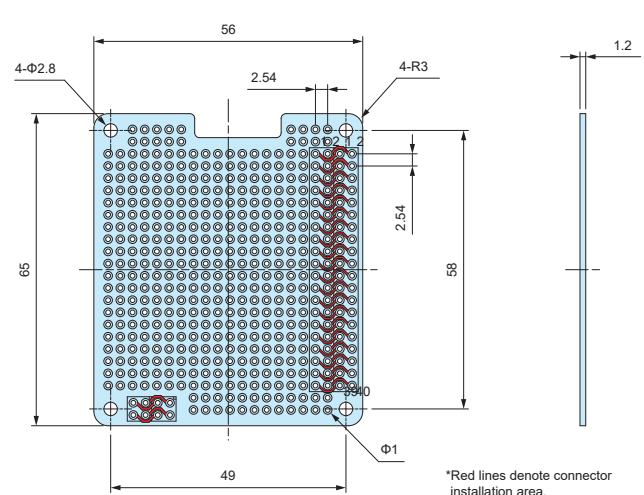
**RPCB dimensions**

- DXF/DWG/PDF drawings available on our website.

RPCB-4B

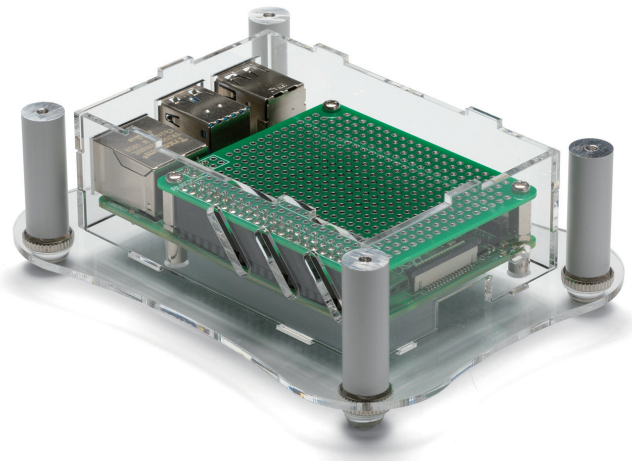
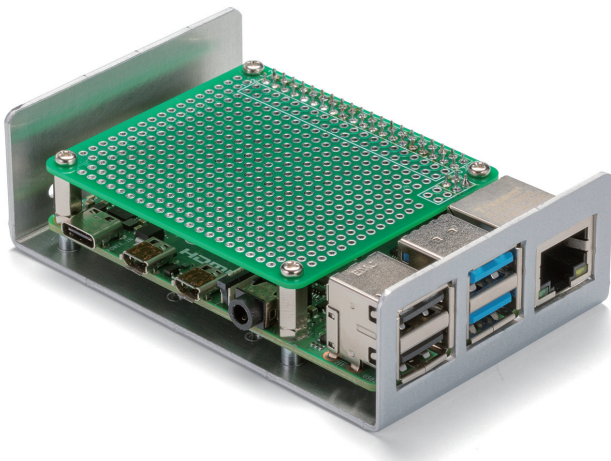


RPCB-5

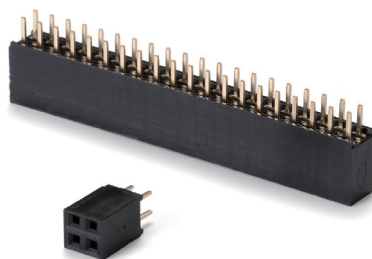
**Product no. / Details**

Product no.	Pack of	Suitable model
RPCB-4B	1	Raspberry Pi 4B
<b>NEW</b> RPCB-5	1	Raspberry Pi 5

- Expansion PCB can also be utilized on RPI-4B and RPA series cases.

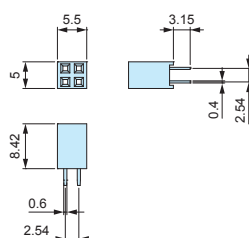




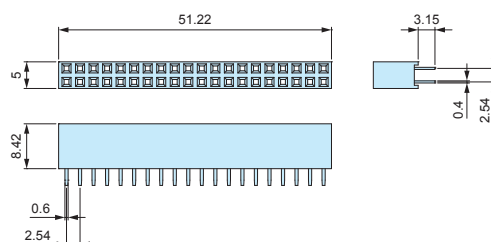
**RPS** series**PIN SOCKET CONNECTOR for RPCB****RPS dimensions**

■ DXF/DWG/PDF drawings available on our website.

RPS2-2



RPS2-20



■ Material / Color : (Socket) FRPBT UL94V-0 / Black • (Pin) Phosphor bronze

■ 2.54mm hole-to-hole pitch pin socket connector.

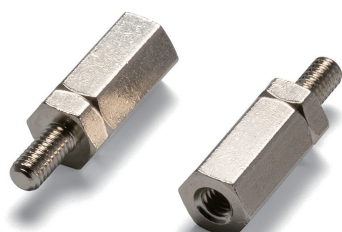
Utilize with RPCB expansion PCB for Raspberry Pi series.

**Technical Data**

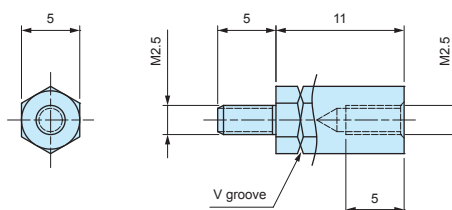
Operating temperature : -55°C ~ +105°C  
 Rated voltage : DC500V  
 Rated current : 1.0A

**Product no. / Details**

Product no.	Pin layout	Pack of
RPS2-2	4 (2 pin x 2)	1
RPS2-20	40 (20 pin x 2)	1

**RPSP2.5-11****HEXAGONAL STANDOFF****RPSP2.5-11 dimensions**

■ DXF/DWG/PDF drawings available on our website.



■ Material / Finish : Brass / Nickel plated

■ Brass hexagonal standoff with M2.5 threads on both male and female sides.

Utilize with RPCB expansion PCB for Raspberry Pi series.

**Product no. / Details**

Product no.	Pack of
RPSP2.5-11	4

**MT2.5-4****MOUNTING SCREW for RPSP2.5-11****MT2.5-4 dimensions**

■ Material / Finish : Steel / Trivalent chromate

■ Utilize when affixing RPCB expansion PCB.

**Product no. / Details**

Product no.	Pack of
MT2.5-4	4