

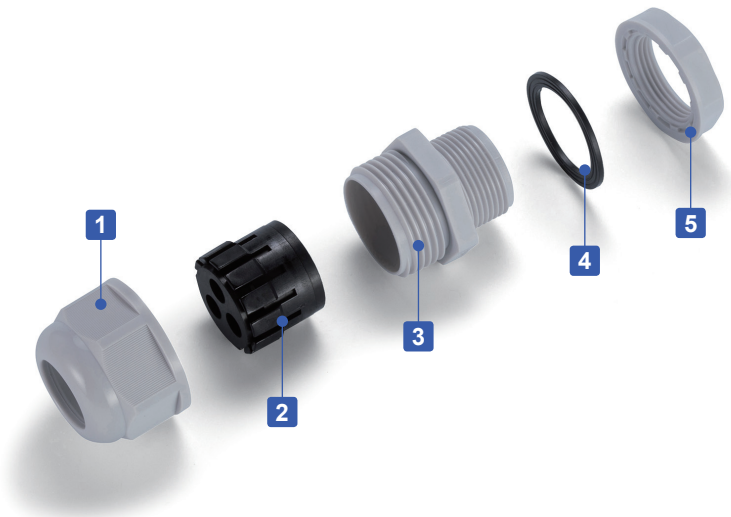
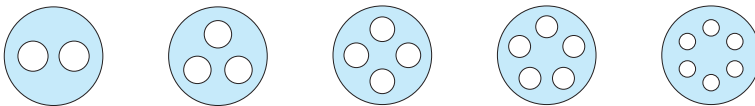


- Cable gland with M type threads.
- Multiple cables can be protected with single cable gland.
- Equivalent to IP65 protection class.
- Cables used must be of the exact same diameter.

| Technical Data |
|--|
| Protection class : Equivalent to IP65* |
| Operating temperature : -20°C ~ +80°C |

*In-house test

Up to a maximum of 6 cables can be used with 1 cable gland.

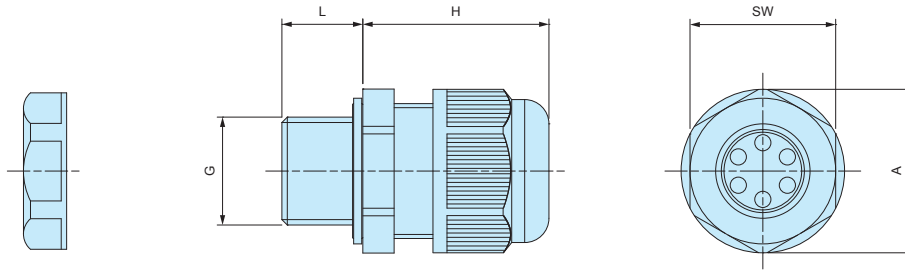


Components

| No. | Part name | Material |
|-----|----------------|--------------|
| 1 | Cap | PA66 UL94V-2 |
| 2 | Sealing Insert | NBR/PA66 |
| 3 | Connector | PA66 UL94V-2 |
| 4 | O-ring | NBR |
| 5 | Lock Nut | PA66 UL94V-2 |

RMH dimensions

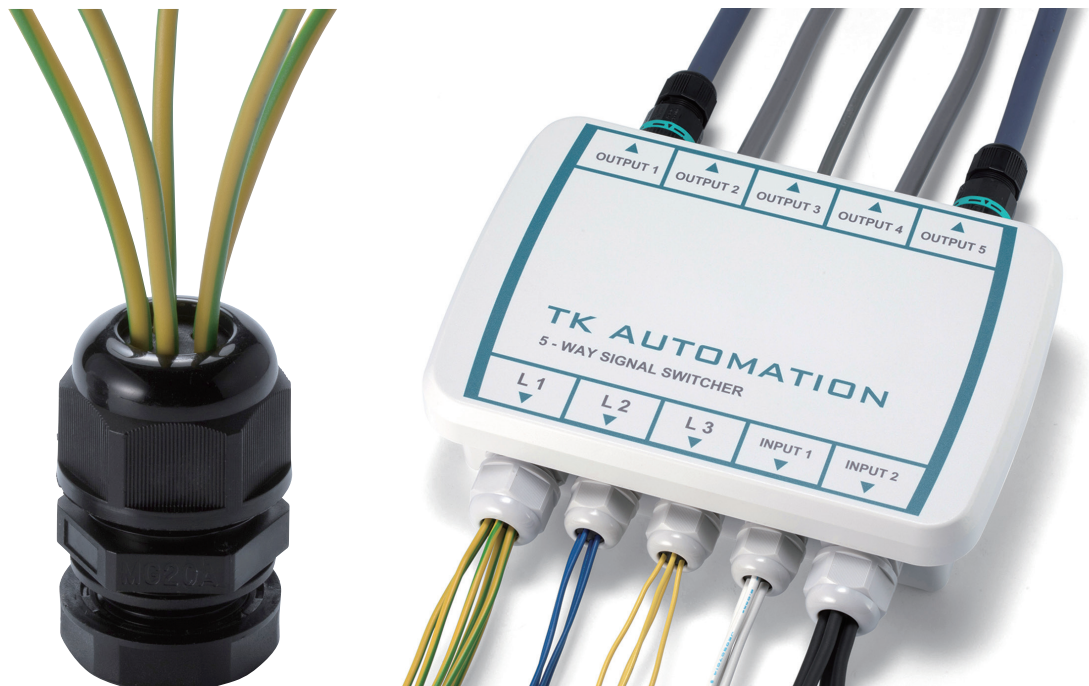
■ DXF/DWG/PDF drawings available on our website.



Product no. / Details

| Product no. | | G | | Cable range | | Nuber of holes | L | H | SW | A | Pack of |
|-------------|--------------|-------------|---------------|-------------|-----|----------------|-----|------|------|------|---------|
| ● Black | ● Light gray | Thread size | Mounting hole | Min | Max | | | | | | |
| RMH12-2B | RMH12-2S | M12×1.5 | Φ12.2 | 2.5 | 3 | 2 | 9.4 | 26 | 18.9 | 21.2 | 1 |
| RMH12-3B | RMH12-3S | M12×1.5 | Φ12.2 | 2 | 2.5 | 3 | 9.4 | 26 | 18.9 | 21.2 | 1 |
| RMH12-4B | RMH12-4S | M12×1.5 | Φ12.2 | 2 | 2.5 | 4 | 9.4 | 26 | 18.9 | 21.2 | 1 |
| RMH16-2B | RMH16-2S | M16×1.5 | Φ16.2 | 3 | 4 | 2 | 15 | 29 | 22 | 24.7 | 1 |
| RMH16-3B | RMH16-3S | M16×1.5 | Φ16.2 | 3 | 4 | 3 | 15 | 29 | 22 | 24.7 | 1 |
| RMH16-4B | RMH16-4S | M16×1.5 | Φ16.2 | 2 | 3 | 4 | 15 | 29 | 22 | 24.7 | 1 |
| RMH16-5B | RMH16-5S | M16×1.5 | Φ16.2 | 2 | 2.5 | 5 | 15 | 29 | 22 | 24.7 | 1 |
| RMH16-6B | RMH16-6S | M16×1.5 | Φ16.2 | 1.5 | 2 | 6 | 15 | 29 | 22 | 24.7 | 1 |
| RMH20-2B | RMH20-2S | M20×1.5 | Φ20.2 | 4.5 | 6 | 2 | 15 | 34.5 | 27 | 30.3 | 1 |
| RMH20-3B | RMH20-3S | M20×1.5 | Φ20.2 | 4 | 5 | 3 | 15 | 34.5 | 27 | 30.3 | 1 |
| RMH20-4B | RMH20-4S | M20×1.5 | Φ20.2 | 4 | 4.5 | 4 | 15 | 34.5 | 27 | 30.3 | 1 |
| RMH20-5B | RMH20-5S | M20×1.5 | Φ20.2 | 3 | 4 | 5 | 15 | 34.5 | 27 | 30.3 | 1 |
| RMH20-6B | RMH20-6S | M20×1.5 | Φ20.2 | 2 | 3 | 6 | 15 | 34.5 | 27 | 30.3 | 1 |
| RMH25-2B | RMH25-2S | M25×1.5 | Φ25.2 | 6 | 8 | 2 | 15 | 37.5 | 33 | 37 | 1 |
| RMH25-3B | RMH25-3S | M25×1.5 | Φ25.2 | 5 | 7 | 3 | 15 | 37.5 | 33 | 37 | 1 |
| RMH25-4B | RMH25-4S | M25×1.5 | Φ25.2 | 4 | 6 | 4 | 15 | 37.5 | 33 | 37 | 1 |
| RMH25-5B | RMH25-5S | M25×1.5 | Φ25.2 | 4.5 | 5.5 | 5 | 15 | 37.5 | 33 | 37 | 1 |
| RMH25-6B | RMH25-6S | M25×1.5 | Φ25.2 | 3 | 4.5 | 6 | 15 | 37.5 | 33 | 37 | 1 |
| RMH32-2B | RMH32-2S | M32×1.5 | Φ32.3 | 8.5 | 11 | 2 | 15 | 44 | 42 | 46.5 | 1 |
| RMH32-3B | RMH32-3S | M32×1.5 | Φ32.3 | 9 | 10 | 3 | 15 | 44 | 42 | 46.5 | 1 |
| RMH32-4B | RMH32-4S | M32×1.5 | Φ32.3 | 8 | 9 | 4 | 15 | 44 | 42 | 46.5 | 1 |
| RMH32-5B | RMH32-5S | M32×1.5 | Φ32.3 | 6 | 8 | 5 | 15 | 44 | 42 | 46.5 | 1 |
| RMH32-6B | RMH32-6S | M32×1.5 | Φ32.3 | 5.5 | 7 | 6 | 15 | 44 | 42 | 46.5 | 1 |

Installation examples



RMH-2