

## NKAP series

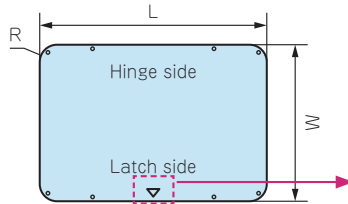
## ALUMINIUM PANEL for NK • NKK • NK-T



- Optional aluminium panel can be used as a control / display board of controller, measuring device, transmitter, and others.

## NKAP dimensions

Required screws vary based on size.



※Install panel with ▽ marking towards the latch.

- DXF/DWG/PDF drawings available on our website.

## Components

| No. | Part name | Material                           |
|-----|-----------|------------------------------------|
| 1   | Panel     | Aluminium A1100P (Silver anodized) |
| 2   | Screw     | Stainless steel                    |

- Screws are not included on NKAP963 ~ NKAP975 models.

## Product no. / Details

## Base side

※NKAP-T20 and T30 comes with U-shaped holes.

| Product no.         | Suitable model      | Thickness | L     | W     | R    | ▽ marking | Screw pcs | Inventory type       | Weight (g) |
|---------------------|---------------------|-----------|-------|-------|------|-----------|-----------|----------------------|------------|
| <b>NEW</b> NKAP-T20 | NK-T20 Base side    | 2         | 283.8 | 193   | 18   | —         | 4         | In stock             | 289        |
| <b>NEW</b> NKAP-T30 | NK-T30 Base side    | 2         | 377.5 | 173.5 | 18   | —         | 4         | In stock             | 345        |
| NKAP903             | NK903 Base side     | 1.5       | 198.5 | 136.5 | 15   | —         | 4         | In stock             | 109        |
| NKAP904             | NK904 Base side     | 1.5       | 226   | 163.5 | 18   | —         | 4         | In stock             | 149        |
| NKAP905             | NK/NKK905 Base side | 1.5       | 257   | 207   | 21.5 | —         | 4         | In stock             | 214        |
| NKAP908             | NK/NKK908 Base side | 1.5       | 250.9 | 200.1 | 18   | —         | 4         | In stock             | 203        |
| NKAP909             | NK909 Base side     | 1.5       | 304.7 | 190.4 | 18   | —         | 4         | In stock             | 234        |
| NKAP910             | NK910 Base side     | 2         | 346   | 244.5 | 17   | —         | 4         | In stock             | 452        |
| NKAP915             | NK/NKK915 Base side | 2         | 364.5 | 252   | 28   | ○         | 8         | In stock             | 496        |
| NKAP918             | NK/NKK918 Base side | 2         | 397.5 | 268.5 | 27   | —         | 8         | In stock             | 574        |
| NKAP920             | NK/NKK920 Base side | 2         | 399.5 | 285   | 28   | ○         | 8         | In stock             | 606        |
| NKAP923             | NK/NKK923 Base side | 2         | 446.3 | 309.1 | 28   | —         | 8         | In stock             | 737        |
| NKAP925             | NK/NKK925 Base side | 2         | 451.5 | 318   | 28   | ○         | 8         | In stock             | 760        |
| NKAP930             | NK/NKK930 Base side | 2         | 476   | 350.5 | 27   | ○         | 8         | In stock             | 880        |
| NKAP933             | NK/NKK933 Base side | 2         | 477.5 | 352   | 27   | —         | 8         | In stock             | 908        |
| NKAP935             | NK/NKK935 Base side | 2         | 535   | 301.5 | 26.5 | ○         | 8         | In stock             | 855        |
| NKAP938             | NK/NKK938 Base side | 2         | 566.2 | 337.6 | 27   | —         | 10        | In stock             | 1,017      |
| NKAP940             | NK/NKK940 Base side | 2         | 526.5 | 374   | 27   | ○         | 10        | In stock             | 1,050      |
| NKAP945             | NK/NKK945 Base side | 2         | 576.5 | 450   | 26.5 | ○         | 10        | In stock             | 1,395      |
| NKAP950             | NK/NKK950 Base side | 2         | 540.8 | 409.1 | 27   | —         | 10        | In stock             | 1,179      |
| NKAP960             | NK/NKK960 Base side | 2         | 579.7 | 454.2 | 27   | —         | 10        | In stock             | 1,402      |
| NKAP963             | NK/NKK963 Base side | 2         | 742.4 | 463   | 23.2 | —         | —         | BTO (built to order) | 1,786      |
| NKAP970             | NK970 Base side     | 2         | 620.2 | 620.2 | 23   | ○         | —         | BTO (built to order) | 1,991      |
| NKAP975             | NK975 Base side     | 2         | 760.5 | 538.2 | 23.5 | —         | —         | BTO (built to order) | 2,156      |

- For BTO (built-to-order) models, production lead time required will be 5 business days after payment confirmation.

## Lid side

※NKAP-T20C and T30C comes with U-shaped holes.

| Product no.          | Suitable model     | Thickness | L     | W     | R    | ▽ marking | Screw pcs | Inventory type       | Weight (g) |
|----------------------|--------------------|-----------|-------|-------|------|-----------|-----------|----------------------|------------|
| <b>NEW</b> NKAP-T20C | NK-T20 Lid side    | 1.5       | 276   | 187   | 15   | —         | 4         | BTO (built to order) | 202        |
| <b>NEW</b> NKAP-T30C | NK-T30 Lid side    | 2         | 368   | 165   | 15   | —         | 4         | BTO (built to order) | 320        |
| NKAP905C             | NK/NKK905 Lid side | 1.5       | 247.8 | 197   | 17   | —         | 4         | BTO (built to order) | 195        |
| NKAP908C             | NK/NKK908 Lid side | 1.5       | 244.1 | 193.3 | 14   | —         | 4         | BTO (built to order) | 189        |
| NKAP909C             | NK909 Lid side     | 1.5       | 298.1 | 183.8 | 14   | —         | 4         | BTO (built to order) | 219        |
| NKAP910C             | NK910 Lid side     | 1.5       | 339.5 | 238   | 14   | —         | 4         | BTO (built to order) | 329        |
| NKAP915C             | NK/NKK915 Lid side | 2         | 357.5 | 243.8 | 23.5 | —         | 8         | BTO (built to order) | 465        |
| NKAP918C             | NK/NKK918 Lid side | 2         | 389.8 | 260.8 | 23.5 | —         | 8         | BTO (built to order) | 541        |
| NKAP920C             | NK/NKK920 Lid side | 2         | 389.9 | 275.5 | 23.5 | —         | 8         | BTO (built to order) | 572        |
| NKAP923C             | NK/NKK923 Lid side | 2         | 438.3 | 301.1 | 23.5 | —         | 8         | BTO (built to order) | 704        |
| NKAP925C             | NK/NKK925 Lid side | 2         | 440.3 | 307   | 23.5 | —         | 8         | BTO (built to order) | 720        |
| NKAP930C             | NK/NKK930 Lid side | 2         | 465.7 | 340   | 23.5 | —         | 8         | BTO (built to order) | 841        |
| NKAP933C             | NK/NKK933 Lid side | 2         | 467.8 | 342   | 23.5 | —         | 8         | BTO (built to order) | 851        |
| NKAP935C             | NK/NKK935 Lid side | 2         | 524.2 | 290.4 | 23.5 | —         | 8         | BTO (built to order) | 810        |
| NKAP938C             | NK/NKK938 Lid side | 2         | 558.3 | 329.7 | 23.5 | —         | 10        | BTO (built to order) | 981        |
| NKAP940C             | NK/NKK940 Lid side | 2         | 516.3 | 363.9 | 23.5 | —         | 10        | BTO (built to order) | 1,000      |
| NKAP945C             | NK/NKK945 Lid side | 2         | 570   | 443   | 23.5 | —         | 10        | BTO (built to order) | 1,342      |
| NKAP950C             | NK/NKK950 Lid side | 2         | 530   | 398.6 | 23.5 | —         | 10        | BTO (built to order) | 1,120      |
| NKAP960C             | NK/NKK960 Lid side | 2         | 568.7 | 443.3 | 23.5 | —         | 10        | BTO (built to order) | 1,336      |
| NKAP970C             | NK970 Lid side     | 2         | 622.6 | 622.6 | 23.8 | ○         | —         | BTO (built to order) | 1,966      |
| NKAP975C             | NK975 Lid side     | 2         | 760.4 | 538.2 | 23.5 | —         | —         | BTO (built to order) | 2,155      |

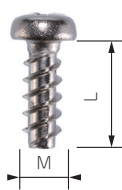
- For BTO (built-to-order) models, production lead time required will be 5 business days after payment confirmation.

**MT** series**MOUNTING SCREW for NK • NKK**

MT3-10T



MT3.5-10T



- Mounting screws for installation of NKAP panel onto NK • NKK series.
- See NKAP drawings on our website for suitable screw size.

**Product no. / Dimensions**

| Product no. | M   | L  | Details                             | Pack of |
|-------------|-----|----|-------------------------------------|---------|
| MT3-10T     | 3   | 10 | Washer head self-tapping screw      | 10      |
| MT3.5-10T   | 3.5 | 10 | Panhead self-tapping screw + Washer | 10 each |

Material : Stainless steel

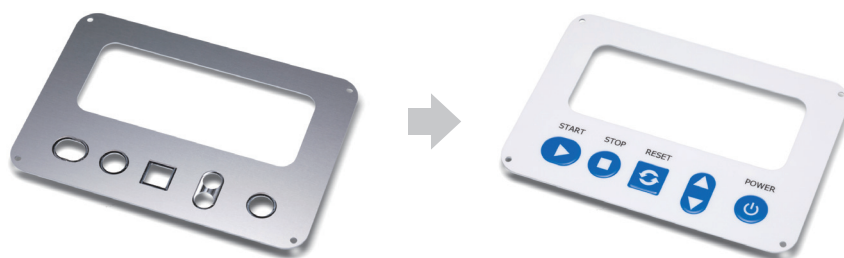
**CUSTOMIZATION on ALUMINIUM PANEL**

- Customization services such as punching press, laser cutting, digital inkjet printing, silkscreen printing, and engraving on NKAP panel are available.
- Custom colors can also be performed either through anodization, or painting.



- Self-clinching Standoff/Stud/Nut or Welded Fastener customization is available.

- An original control panel with machined aluminum panel and overlay sheet can be manufactured.



# NKAP-KIT

# PANEL INSTALLATION KIT for NK•NKK



Kit installation example

- Panel installation kit for NK • NKK963, NK970, and NK975 models.  
For installation of NKAP panels onto NK • NKK963, NK970, and NK975 models that do not have mounting bosses.
- Use included drill bit to drill mounting holes ※ Use electric screw driver for drilling the holes.  
Waterproofing ability will be lost once holes are drilled.  
※Drilling is to be performed by customer.  
※Kit cannot be mounted on cover side of NK • NKK963 model.

## Components

| No. | Part name                | Pcs |
|-----|--------------------------|-----|
| 1   | Panel installation parts | 20  |
| 2   | Screw                    | 40  |
| 3   | Drill bit                | 1   |
| 4   | Hole guide               | 1   |

## Product no. / Dimensions

| Product no. | Included parts   |
|-------------|--|
| NKAP-KIT    | 1 set (Installation parts x 20 pcs, Screw x 40 pcs, Bit x 1 pc, and Guide x 1) |

- Guide markings for drilling holes are located on the case.



Guide marking



Panel installation example



## How to install panel with panel mount kit

■ Prepare electric screw driver and a manual Phillips (plus) screw driver.

■ Check the installation video from QR code.



Confirm the mounting positions. ○



Fit the hole guide to the guide marking.



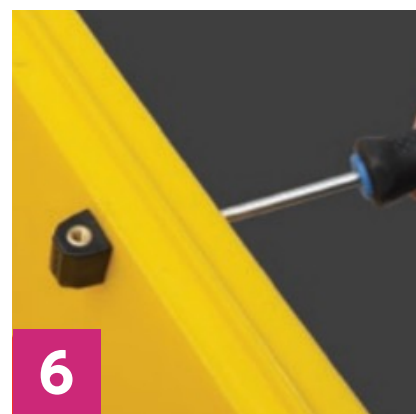
Drill the hole using included drill bit while attaching the hole guide on the case.



After the hole is drilled, insert the screw from the exterior side.



Attach the installation parts to the inserted screw. (Place the insert nut upward.)



Tighten the screw firmly.  
(Recommended torque : 0.8 ~ 1.0 N · m)



Place the panel on the panel mount part and tighten the mount screw.



Tighten all the mount screws.