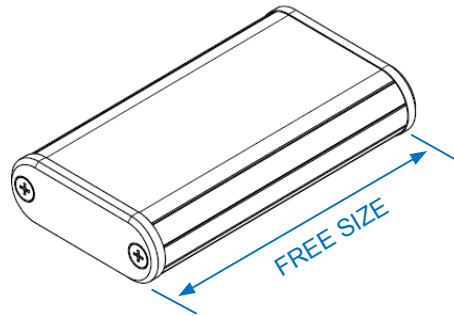
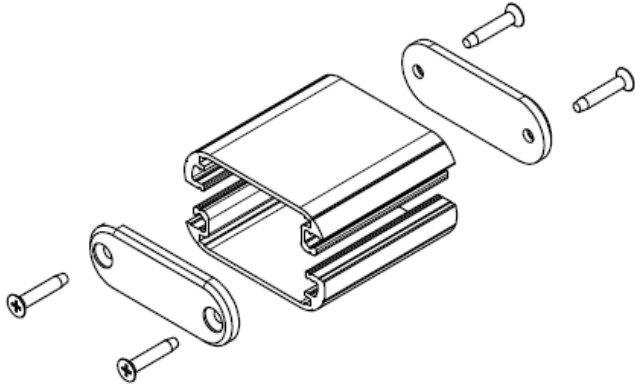


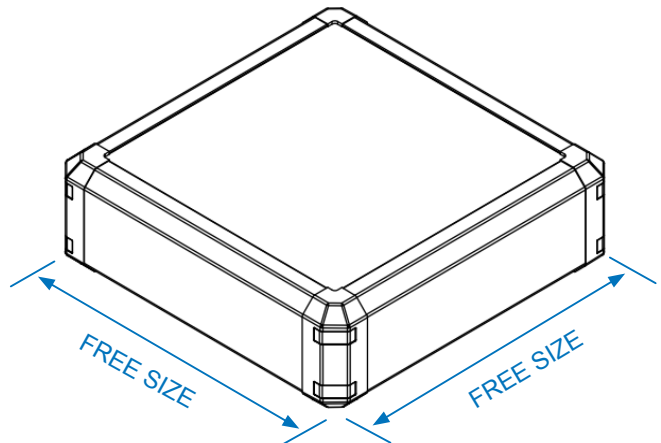
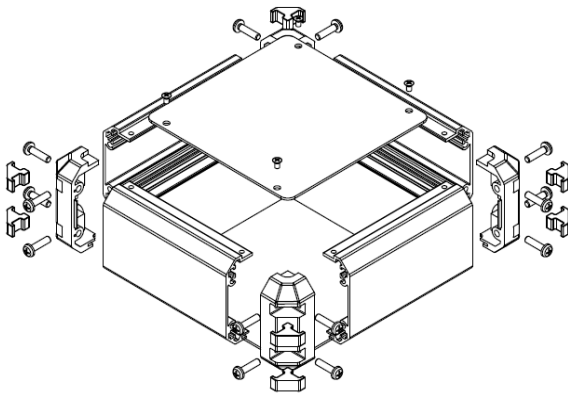
## VARIETY OF CUSTOM SIZED ENCLOSURES

Extruded models are adjustable in extrusion length (depth) in 0.1mm or 1.0mm intervals.  
Sheet-metal models are adjustable in W/D/H dimensions in 1.0mm intervals.

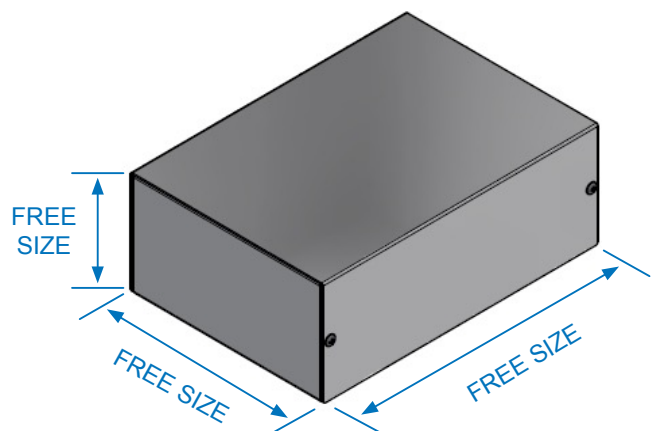
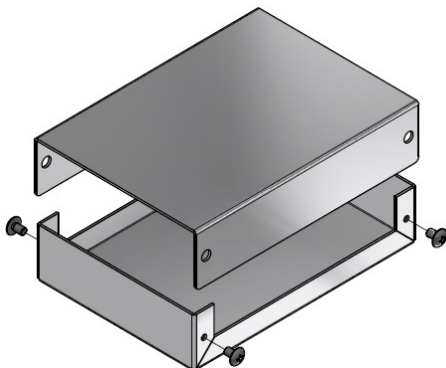
### EXTRUDED ALUMINIUM MODEL



### 4 SIDE-EXTRUDED ALUMINIUM MODEL



### SHEET METAL MODEL



**More custom sized models are available.**

[https://www.takachi-enclosure.com/cat/flexible\\_size](https://www.takachi-enclosure.com/cat/flexible_size)

# INQUIRING CUSTOM SIZED ENCLOSURES

- 1 Navigate to the free-size product page you wish to inquire on our website and click on the button indicated by the → arrow.



Custom sized shock-proof design instrument enclosure.  
Corner guards are designed to be both aesthetically pleasing, and impact resistant.

Selectable 22 different Width/Height profiles and specified length (depth) from 40 to 500mm in 1mm intervals.  
16 different color combinations can be specified.

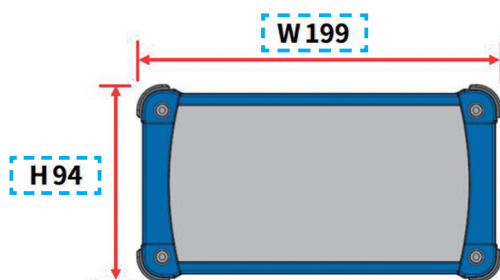


<b>CUSTOM SIZE WEB QUOTATION</b>	3D View - Silver/Navy	3D View - 16 color types
3D View - With tilt legs	Exploded view	Color code

■ If there is no "WEB QUOTATION" click button, please send us your inquiry from the "INQUIRY FORM" on the CONTACT tab on our website.

- 2 Go to the CUSTOM SIZE WEB QUOTATION page and enter your preferred dimensions.

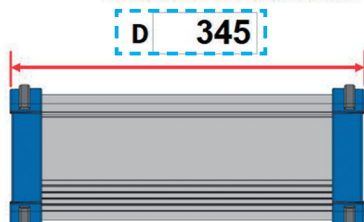
## STEP1 Select required width / height.



Select	W	H	Select	W	H
<input type="checkbox"/>	69	34	<input type="checkbox"/>	151	81
<input type="checkbox"/>	69	44	<input type="checkbox"/>	151	101
<input type="checkbox"/>	69	59	<input type="checkbox"/>	199	56
<input type="checkbox"/>	89	39	<input type="checkbox"/>	199	74
<input type="checkbox"/>	89	49	<input checked="" type="checkbox"/>	199	94
<input type="checkbox"/>	89	64	<input type="checkbox"/>	199	119
<input type="checkbox"/>	116	41	<input type="checkbox"/>	244	64
<input type="checkbox"/>	116	56	<input type="checkbox"/>	244	89
<input type="checkbox"/>	116	71	<input type="checkbox"/>	244	114
<input type="checkbox"/>	151	46	<input type="checkbox"/>	300	90
<input type="checkbox"/>	151	61	<input type="checkbox"/>	300	140

## STEP2 Specify size D(depth) ... Enter dimensions in 1mm intervals.

Available from 40 to 500mm



\*NOTE: Specified size D(depth) ≠ available internal dimension

Available internal dimension = **D dimension - 20mm**

Please take caution when calculating required D dimension.

- 3 After entering the quantity, click on the button indicated by the → arrow to generate a Product No.

**STEP4** **Quantity** ※Quantity can be specified up to 5 slots.

10 pcs

▶Add quantity



▶ **GENERATE PRODUCT NO.**

Product No. **EXPS199 – 94 – 345SN** ※Please use this model number when ordering.

- 4 After entering your details and the message in our INQUIRY FORM, click on the CONFIRM button.

**STEP5** **INQUIRY FORM**

Fill out the inquiry form and send it. We will give you quotation by Email.  
Inquiry from the country where the distributor is located will be answered by the distributor.

Fields marked with ★ are required

Product No. **EXPS199-94-345SN** Quantity ★ 10

E-mail ★ jiro@takachi-el.co.jp

Company ★ TAKACHI ELECTRONICS ENCLOSURE CO., LTD.

Your name ★ ☐ Mr. ☒ Ms. First name Jiro Last name Takachi

Country ★

Message  
I would like a quote for 10 pieces of EXPS199-94-345SN.



▶ **CONFIRM**

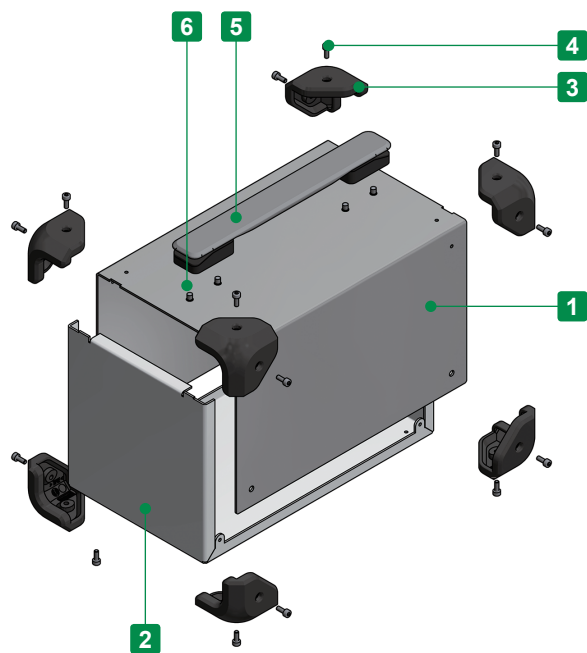
Our privacy policy have been designed to ensure that personal information is not misused or used for purposes other than it is intended for.  
[PRIVACY POLICY](#)

- 5 A TAKACHI sales representative will get in touch with you with a quote via e-mail.

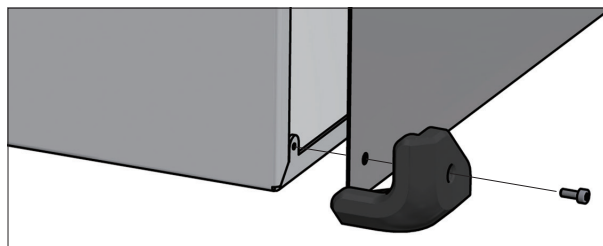




Conductive



- Custom sized aluminium case with shockproof and anti-slip elastomer corner guards.
- Adjustable sizes available in 1mm intervals, with W dimension from 150 ~ 500mm, D dimension from 150 ~ 400mm, and H dimension from 80 ~ 250mm.
- Corner guards are available in 4 different color variations.
- Customizable with, and without carrying handles.
- A conductive coating is applied onto the internal surface, allowing it to be conductive.
- Aluminium case and corner guard with screw fastening.



## Components

No.	Part name	Pcs	Material	Color / Finish
1	Top Cover	1	Aluminium A1100P t=1.5	Metallic silver / Painted : Conductive coated internal surface
2	Base	1	Aluminium A1100P t=1.5	Metallic silver / Painted : Conductive coated internal surface
3	Corner guard	8	TPE	Black • Gray • Navy • Red
4	Case / Corner guard screw (Hexagonal M4-8)	16/18/20	Steel	Black trivalent chromate
5	Carrying handle	1	PU • PA6 • ABS • Steel	Black • Gray
6	Carrying handle screw (M5-8)	4	Steel	Trivalent chromate

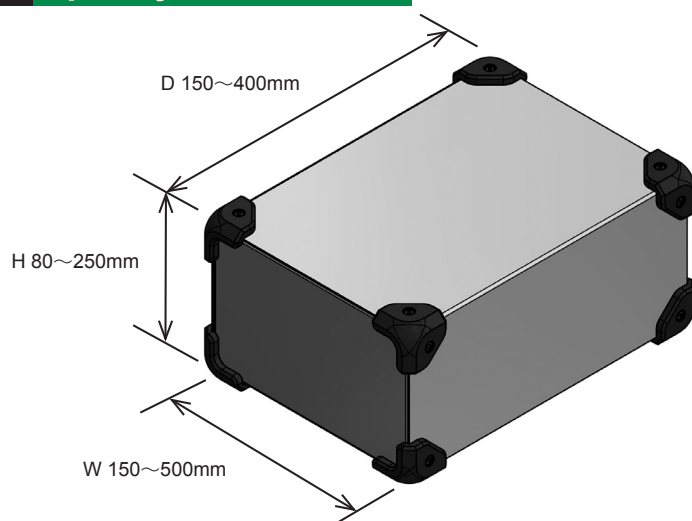
■ Hexagonal wrench included.

■ No. 5 and 6 are available for carrying handle types only.



## 1 Specify Dimensions

Specify dimensions in 1mm intervals.



### Caution

- W / H / D dimensions are external dimensions of stainless steel case only.  
(Exclude corner guard dimensions)
- Refer to the chart on page MCGF-3 for available dimensions.
- Carrying handle is set to the center of top face.  
(Carrying handle is not available for D length of 224mm and smaller.)

## 2 Select Color Type

Code	S B Silver / Black	S G Silver / Gray	S N Silver / Navy	S R Silver / Red
Color				

## 3 Select Handle Type

- Carrying handle model is not available for D length of 224mm and smaller.

Black handle **B**



Gray handle **G**



No handle **N**



## Confirm Product No.

Confirm an assigned product number in the following order format as below.

Product no. MCGF

-  -   
W H D

-   
Color code Handle Type

Example : W = 186 mm, H = 152 mm, D = 245 mm, Silver / Navy color, with Gray handle

MCGF 186 - 152 - 245 SN - G

### Lead time

Custom Size Only  
Custom Size + Hole Milling

7 business days (1 ~ 3 pcs)  
10 business days (1 ~ 3 pcs)

### Order Inquiry

For more information, contact us here at [sales@takachi-el.co.jp](mailto:sales@takachi-el.co.jp)

# MCGF Size Chart

Refer to the below chart for available sizes.

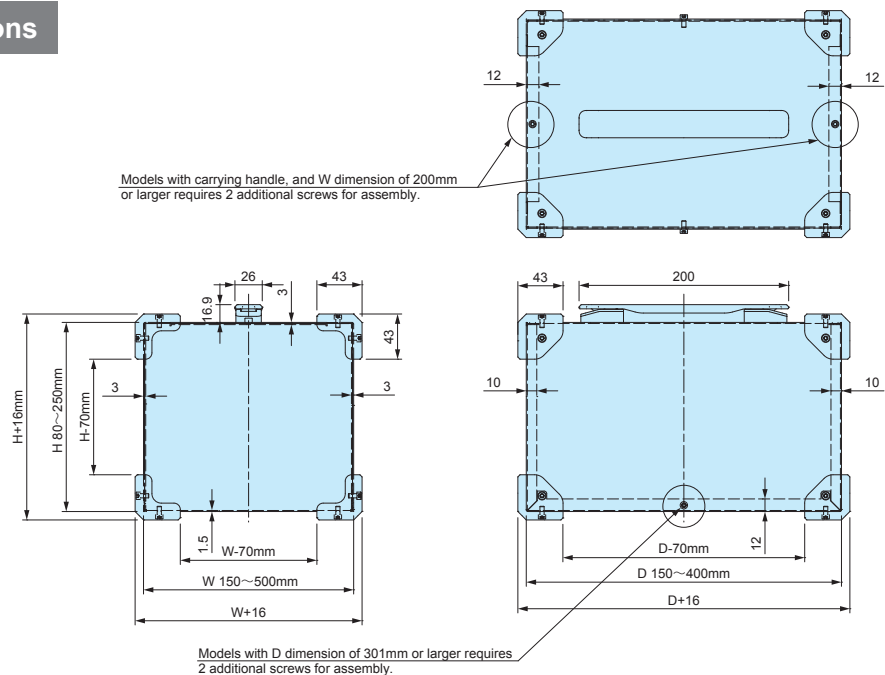
■ [—] sizes are not available.

■ Models with carrying handle, and W dimension of 200mm or larger requires 2 additional screws for assembly.

W	H	D	16 screw fixing points						18 screw fixing points			
			150~174	175~199	200~224	225~249	250~274	275~299	300~324	325~349	350~374	375~400
150~199	80~99	100~124	○	○	○	○	○	○	○	○	○	○
		125~149	○	○	○	○	○	○	○	○	○	○
200~249	80~99	100~124	○	○	○	○	○	○	○	○	○	○
		125~149	○	○	○	○	○	○	○	○	○	○
		150~174	—	—	○	○	○	○	○	○	○	○
		175~199	—	—	—	○	○	○	○	○	○	○
		200~224	—	—	—	—	○	○	○	○	○	○
250~299	80~99	100~124	○	○	○	○	○	○	○	○	○	○
		125~149	○	○	○	○	○	○	○	○	○	○
		150~174	—	—	○	○	○	○	○	○	○	○
		175~199	—	—	—	○	○	○	○	○	○	○
		200~224	—	—	—	—	○	○	○	○	○	○
		225~250	—	—	—	—	—	○	○	○	○	○
300~349	80~99	100~124	○	○	○	○	○	○	○	○	○	○
		125~149	○	○	○	○	○	○	○	○	○	○
		150~174	—	—	○	○	○	○	○	○	○	○
		175~199	—	—	—	○	○	○	○	○	○	○
		200~224	—	—	—	—	○	○	○	○	○	○
		225~250	—	—	—	—	—	○	○	○	○	○
		250~274	—	—	—	—	—	○	○	○	○	○
350~399	80~99	100~124	○	○	○	○	○	○	○	○	○	○
		125~149	○	○	○	○	○	○	○	○	○	○
		150~174	—	—	○	○	○	○	○	○	○	○
		175~199	—	—	—	○	○	○	○	○	○	○
		200~224	—	—	—	—	○	○	○	○	○	○
		225~250	—	—	—	—	—	○	○	○	○	○
		250~274	—	—	—	—	—	○	○	○	○	○
400~449	80~99	100~124	○	○	○	○	○	○	○	○	○	○
		125~149	○	○	○	○	○	○	○	○	○	○
		150~174	—	—	○	○	○	○	○	○	○	○
		175~199	—	—	—	○	○	○	○	○	○	○
		200~224	—	—	—	—	○	○	○	○	○	○
		225~250	—	—	—	—	—	○	○	○	○	○
		250~274	—	—	—	—	—	○	○	○	○	○
450~500	80~99	100~124	○	○	○	○	○	○	○	○	○	○
		125~149	○	○	○	○	○	○	○	○	○	○
		150~174	—	—	○	○	○	○	○	○	○	○
		175~199	—	—	—	○	○	○	○	○	○	○
		200~224	—	—	—	—	○	○	○	○	○	○
		225~250	—	—	—	—	—	○	○	○	○	○
		250~274	—	—	—	—	—	○	○	○	○	○

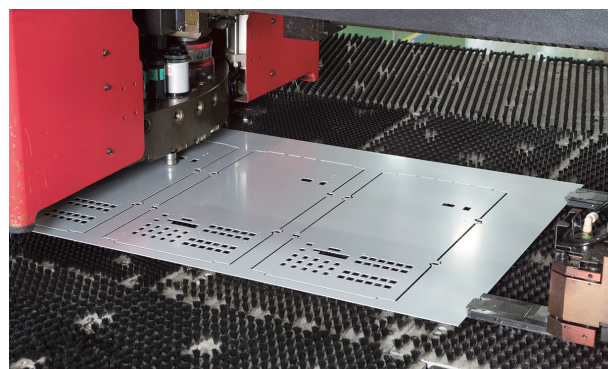
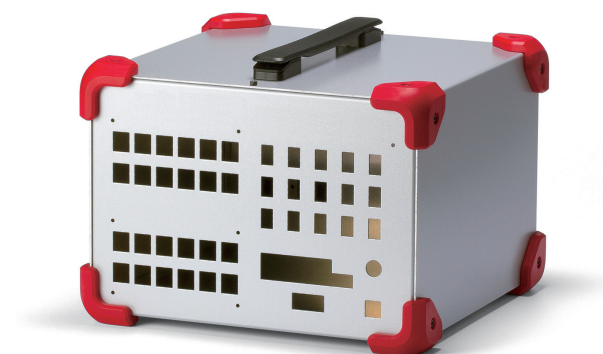
■ Carrying handle model is not available for D length of 224mm and smaller.

## MCGF dimensions

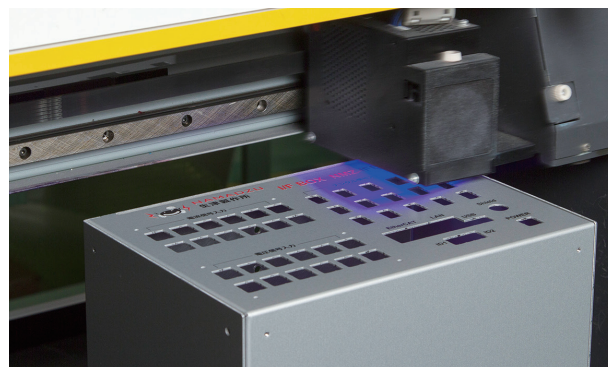
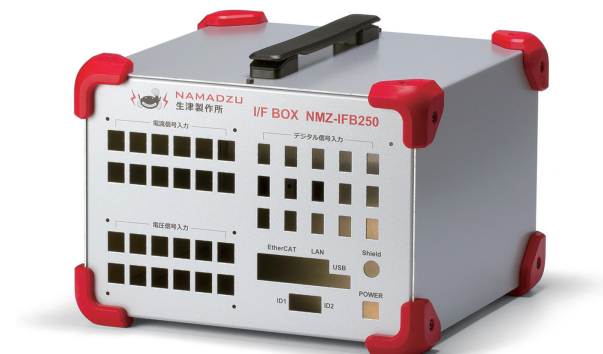


## CUSTOMIZATION EXAMPLE

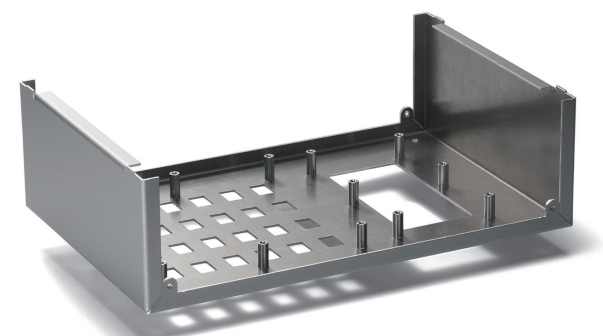
### PUNCH PRESS



### INKJET PRINTING

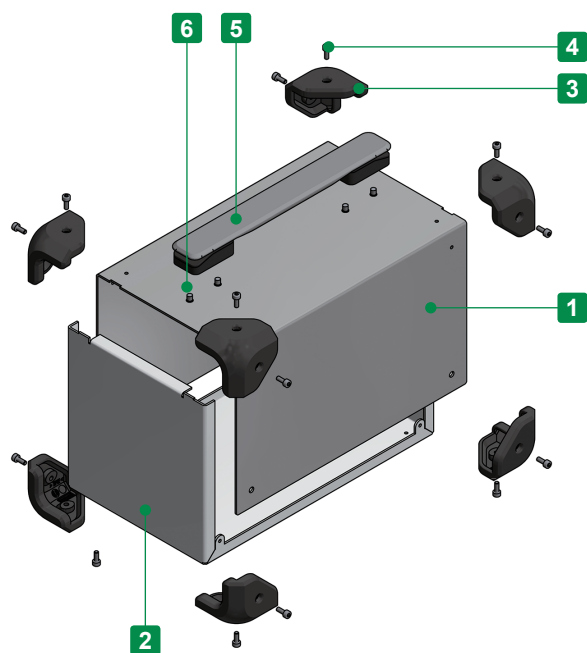


### SELF CLINCHING STANDOFF

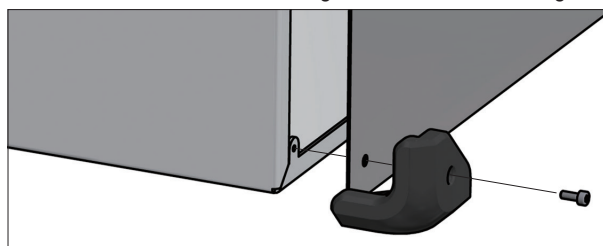




Conductive



- Adjustable sizes available in 1mm intervals, with W dimension from 150 ~ 500mm, D dimension from 150 ~ 400mm, and H dimension from 80 ~ 250mm.
- Custom sized stainless steel case with shockproof and anti-slip elastomer corner guards.
- Corner guards are available in 4 different color variations.
- Customizable with, and without carrying handles.
- SUS304 stainless steel allows the enclosure to be conductive.
- Stainless steel case and corner guard with screw fastening.



## Components

No.	Part name	Pcs	Material	Color / Finish
1	Top Cover	1	Stainless steel SUS304	Bright annealed (BA)
2	Base	1	Stainless steel SUS304	Bright annealed (BA)
3	Corner guard	8	TPE	Black • Gray • Navy • Red
4	Case / Corner guard screw (Hexagonal M4-8)	16 / 18 / 20	Stainless steel	Unfinished
5	Carrying handle	1	PU • PA6 • ABS • Steel	Black • Gray
6	Carrying handle screw (M5-8)	4	Steel	Trivalent chromate

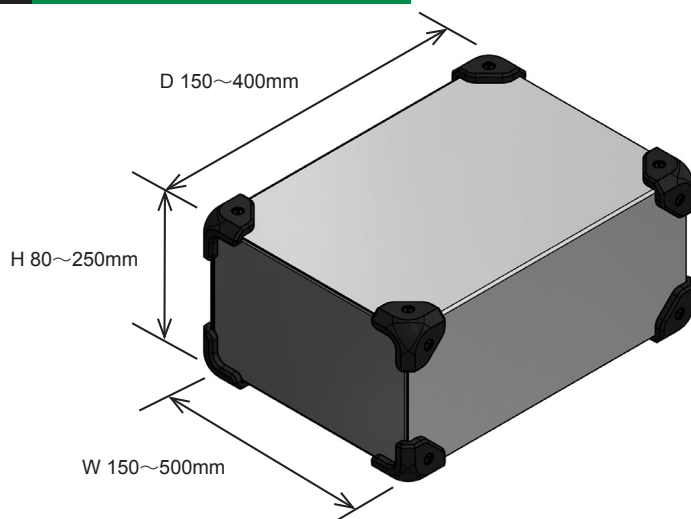
■ Hexagonal wrench included.

■ No. 5 and 6 are available for carrying handle types only.



## 1 Specify Dimensions

Specify dimensions in 1mm intervals.



### Caution

- W, H and D dimensions are external dimensions of stainless steel case only.  
(Exclude corner guard dimensions)
- Refer to the chart on page MCGS-3 for available dimensions.
- Carrying handle is set to the center of top face.  
(Carrying handle is not available for D length of 224mm and smaller.)

## 2 Select Color Type

Code	B Black	G Gray	N Navy	R Red
Color				

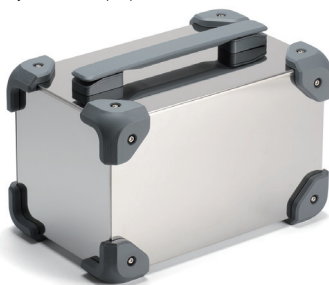
## 3 Select Handle Type

- Carrying handle model is not available for D length of 224mm and smaller.

Black handle [B]



Gray handle [G]



No handle [N]



## Confirm Product No.

Confirm an assigned product number in the following order format as below.

Product no. MCGS

-  -      -   
 W                  H                  D                  Color code    Handle Type

Example : W = 222 mm, H = 111 mm, D = 333 mm, Red color Corner Guard with Black handle

MCGS    222 - 111 - 333    R - B

### Lead time

Custom Size Only  
Custom Size + Hole Milling

9 business days (1 ~ 10 pcs)  
10 business days (1 ~ 10 pcs)

### Order Inquiry

For more information, contact us here at [sales@takachi-el.co.jp](mailto:sales@takachi-el.co.jp)

# MCGS Size Chart

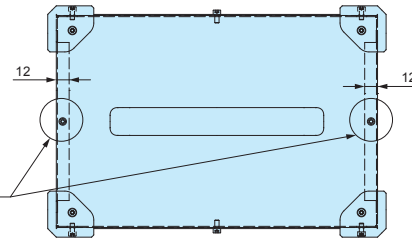
Refer to the below chart for available sizes.

■ [—] sizes are not available.

■ Models with carrying handle, and W dimension of 200mm or larger requires 2 additional screws for assembly.

W	H	D	16 screw fixing points						18 screw fixing points			
			150~174	175~199	200~224	225~249	250~274	275~299	300~324	325~349	350~374	375~400
150~199	80~99	100~124	○	○	○	○	○	○	○	○	○	○
		125~149	○	○	○	○	○	○	○	○	○	○
200~249	80~99	100~124	○	○	○	○	○	○	○	○	○	○
		125~149	○	○	○	○	○	○	○	○	○	○
		150~174	—	—	○	○	○	○	○	○	○	○
		175~199	—	—	—	○	○	○	○	○	○	○
		200~224	—	—	—	—	○	○	○	○	○	○
250~299	80~99	100~124	○	○	○	○	○	○	○	○	○	○
		125~149	○	○	○	○	○	○	○	○	○	○
		150~174	—	—	○	○	○	○	○	○	○	○
		175~199	—	—	—	○	○	○	○	○	○	○
		200~224	—	—	—	—	○	○	○	○	○	○
		225~250	—	—	—	—	—	○	○	○	○	○
300~349	80~99	100~124	○	○	○	○	○	○	○	○	○	○
		125~149	○	○	○	○	○	○	○	○	○	○
		150~174	—	—	○	○	○	○	○	○	○	○
		175~199	—	—	—	○	○	○	○	○	○	○
		200~224	—	—	—	—	○	○	○	○	○	○
		225~250	—	—	—	—	—	○	○	○	○	○
		250~274	—	—	—	—	—	○	○	○	○	○
350~399	80~99	100~124	○	○	○	○	○	○	○	○	○	○
		125~149	○	○	○	○	○	○	○	○	○	○
		150~174	—	—	○	○	○	○	○	○	○	○
		175~199	—	—	—	○	○	○	○	○	○	○
		200~224	—	—	—	—	○	○	○	○	○	○
		225~250	—	—	—	—	—	○	○	○	○	○
		250~274	—	—	—	—	—	○	○	○	○	○
400~449	80~99	100~124	○	○	○	○	○	○	○	○	○	○
		125~149	○	○	○	○	○	○	○	○	○	○
		150~174	—	—	○	○	○	○	○	○	○	○
		175~199	—	—	—	○	○	○	○	○	○	○
		200~224	—	—	—	—	○	○	○	○	○	○
		225~250	—	—	—	—	—	○	○	○	○	○
		250~274	—	—	—	—	—	○	○	○	○	○
450~500	80~99	100~124	○	○	○	○	○	○	○	○	○	○
		125~149	○	○	○	○	○	○	○	○	○	○
		150~174	—	—	○	○	○	○	○	○	○	○
		175~199	—	—	—	○	○	○	○	○	○	○
		200~224	—	—	—	—	○	○	○	○	○	○
		225~250	—	—	—	—	—	○	○	○	○	○
		250~274	—	—	—	—	—	○	○	○	○	○

■ Carrying handle model is not available for D length of 224mm and smaller.

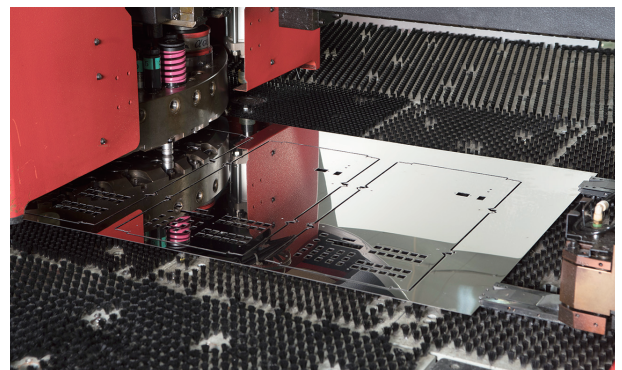


Technical drawing of a rectangular plate with the following dimensions and features:

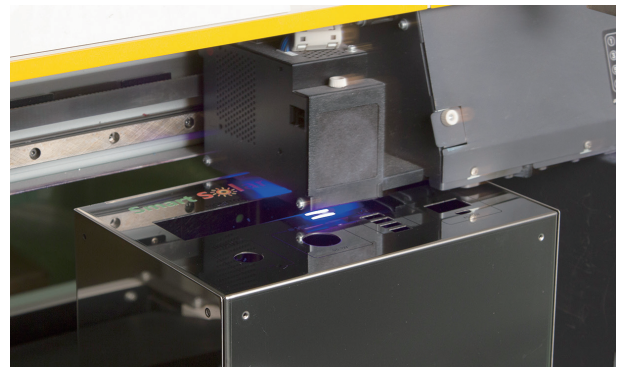
- Overall width: 200
- Overall height: 100
- Top flange width: 43
- Bottom flange width: 10
- Central hole diameter:  $\varnothing 70\text{mm}$
- Distance from bottom edge to hole center: 12
- Distance from side edge to hole center:  $D - 150 \sim 400\text{mm}$
- Overall distance from side edge to hole center:  $D + 16$

## CUSTOMIZATION EXAMPLE

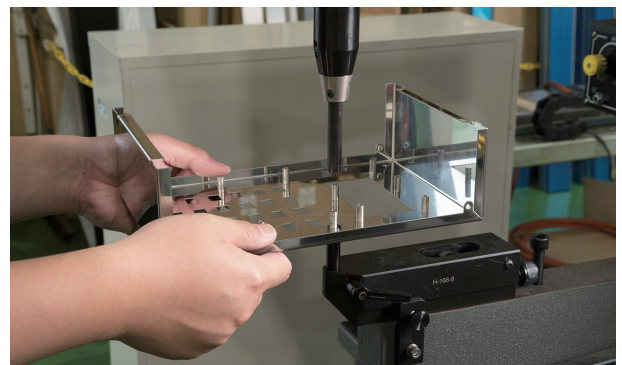
## PUNCH PRESS



## INKJET PRINTING



## SELF CLINCHING STANDOFF





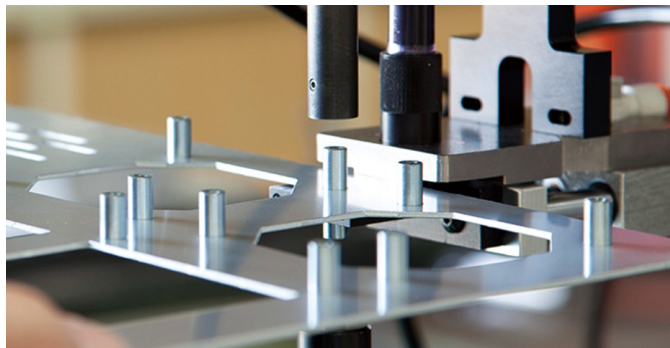
# SELF-CLINCHING STANDOFF / STUD / NUT



Easy attaching of self-clinching fasteners into simple through-holes.

A specialized press machine for clinching is utilized to ensure that the standoffs / studs / nuts are securely attached.

117 different kinds of standoffs / studs / nuts are available, in addition to a non-through hole concealed-head type.

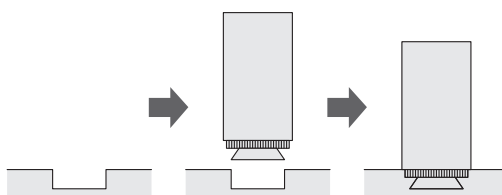
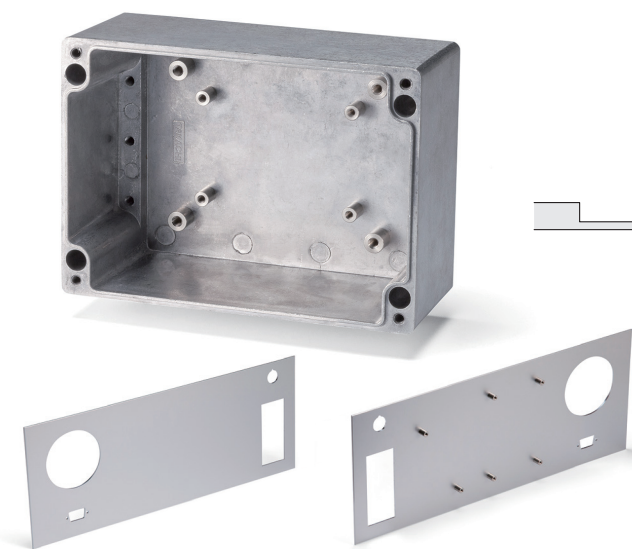


## CONCEALED-HEAD SELF-CLINCHING STANDOFFS

Installed into recessed pockets so that one side of the panel remains unmarked.

Standoffs can be mounted onto 1.5mm or thicker material without requiring a through-hole to be milled.

Concealed-head standoffs/studs ensure that the IP rating (for waterproof type enclosure) is maintained.



Concealed-head standoffs/studs give an aesthetically better finish on the enclosure.

A recess cut is made on the internal side, and the standoffs are press-inserted in.

### ● Mounting Mark Visibility

Thickness	Mark visibility	
	M3	M4
1.5mm	△	×
2.0mm	○	○
2.5mm	○	○
3.0mm ~	○	○

● Almost invisible  
○ Barely visible  
△ Somewhat visible  
× Very visible



Example : Clinching M4 standoff on 1.5mm thick material.  
Mounting is possible on 1.5mm thick material. Mounting mark would be almost invisible on 2.5mm or thicker material.

## STUD WELDING

Welded fasteners on aluminium objects. Standoffs and studs with minimal surface weld marks can be produced. Welding process is available on raw aluminium material only (not available for painted or anodized aluminium) as welding requires the material to be conductive.

