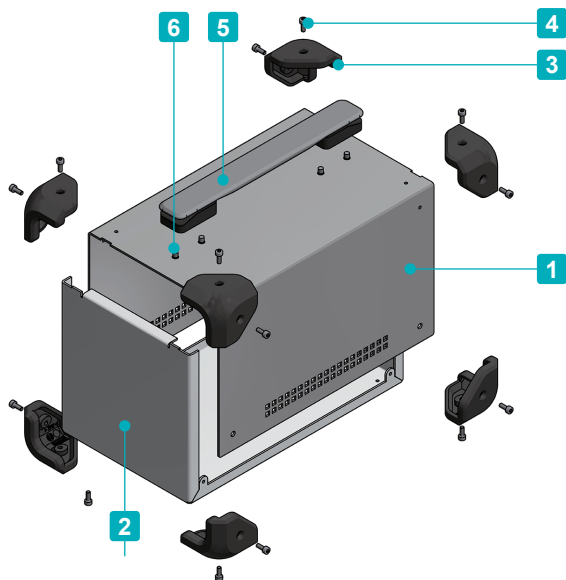
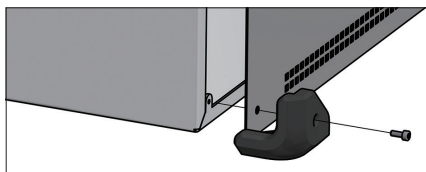




- Aluminium case equipped with shockproof and anti-slip elastomer corner guards.
- Suitable to be used as a fanless PC, power supply, power storage device etc.
Carrying handle can withstand a maximum load up to 30.0 kg.
- Corner guards are available in 4 different color variations.
- Custom sizes available.



- Aluminium case and corner guard with screw fastening.



Included screws
Case / Corner guard - M4-8 Hexagonal x 16 or 18 pcs
Carrying handle - M5-8 x 4 pcs
※Hexagonal wrench included.

Components

No.	Part name	Pcs	Material	Color / Finish
1	Top cover	1	Steel SECC t=10	Black / Painted
			Aluminium A1100P t=1.5	Metallic silver / Painted (Conductive inside)
2	Base	1	Aluminium A1050P t=1.5	Black / Painted
			Aluminium A1100P t=1.5	Metallic silver / Painted (Conductive inside)
3	Corner guard	8	TPE	Black • Gray • Navy • Red
4	Case / Corner guard screw	16 / 18	Steel	Black trivalent chromate
5	Carrying handle	1	PU • PA6 • ABS • Steel	Black • Gray
6	Carrying handle screw	4	Steel	Trivalent chromate

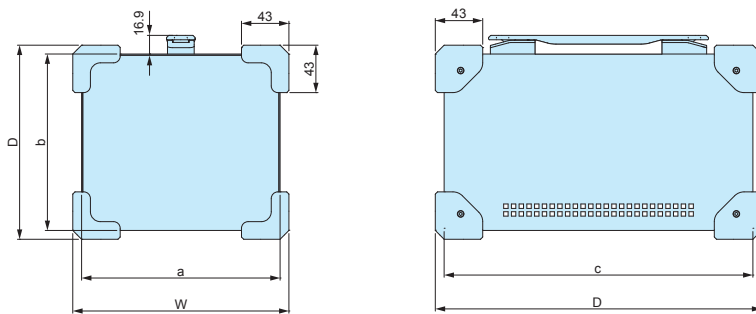
- Top cover and base are covered with a protective film on one side.

Color Type

Code	B B Black / Black	B G Black / Gray	B N Black / Navy	B R Black / Red
Color				
Code	S B Silver / Black Conductive	S G Silver / Gray Conductive	S N Silver / Navy Conductive	S R Silver / Red Conductive
Color				

MCG dimensions

■ DXF/DWG/PDF/STP drawings available on our website.



Product no. / Dimensions

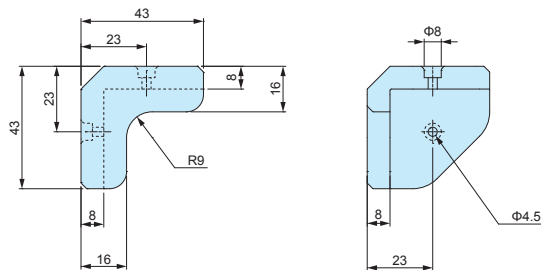
■ Please suffix color code at the end of the product number.

Product no.	W	H	D	a	b	c	Weight (kg)	
							B □ models	S □ models
MCG14-14-23□□	156	156	246	140	140	230	1.2	0.9
MCG18-16-28□□	196	176	296	180	160	280	1.8	1.3
MCG21-14-24□□	226	156	256	210	140	240	1.6	1.2
MCG26-18-30□□	276	196	316	260	180	300	2.3	1.6

Accessories (Optional parts)

MG-1 CORNER GUARD

MG-1 dimensions



- Corner guard part for MCG case.
- Corner guard can be installed on enclosures other than MCG series.
- M4 thread holes are required for installation.
- Available in 4 different color variations.

■ DXF/DWG/PDF/STP drawings available on our website.

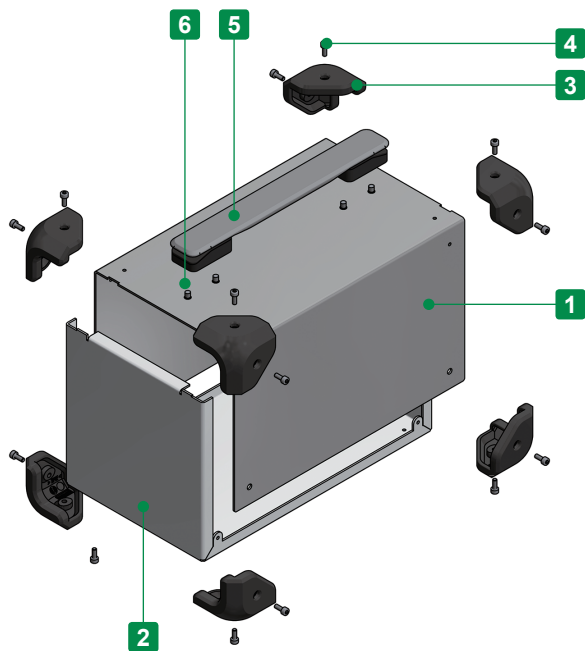
Components

No.	Part name	Material
1	Corner guard	TPE
2	Screw (M4-8 Hexagonal)	Steel

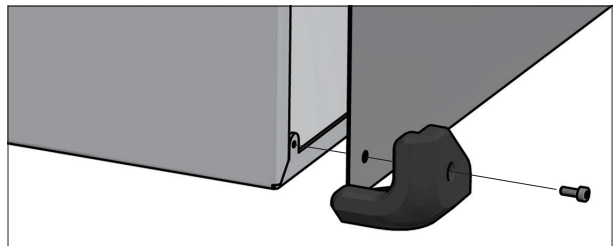
Product no. / Details

Product no.				Weight (g)	Pack of
Black	Gray	Navy	Red		
MG-1B	MG-1G	MG-1N	MG-1R	124	8

Included screw : M4-8 Hexagonal : Steel : Black trivalent chromate x 18 pcs + Hexagonal wrench



- Custom sized aluminium case with shockproof and anti-slip elastomer corner guards.
- Adjustable sizes available in 1mm intervals, with W dimension from 150 ~ 500mm, D dimension from 150 ~ 400mm, and H dimension from 80 ~ 250mm.
- Corner guards are available in 4 different color variations.
- Customizable with, and without carrying handles.
- A conductive coating is applied onto the internal surface, allowing it to be conductive.
- Aluminium case and corner guard with screw fastening.



Components

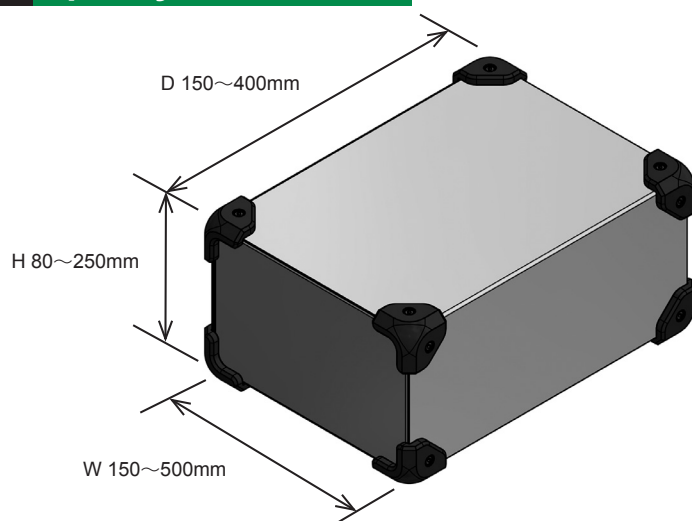
No.	Part name	Pcs	Material	Color / Finish
1	Top Cover	1	Aluminium A1100P t=1.5	Metallic silver / Painted : Conductive coated internal surface
2	Base	1	Aluminium A1100P t=1.5	Metallic silver / Painted : Conductive coated internal surface
3	Corner guard	8	TPE	Black • Gray • Navy • Red
4	Case / Corner guard screw (Hexagonal M4-8)	16/18/20	Steel	Black trivalent chromate
5	Carrying handle	1	PU • PA6 • ABS • Steel	Black • Gray
6	Carrying handle screw (M5-8)	4	Steel	Trivalent chromate

■ Hexagonal wrench included.

■ No. 5 and 6 are available for carrying handle types only.

1 Specify Dimensions

Specify dimensions in 1mm intervals.



Caution

- W / H / D dimensions are external dimensions of stainless steel case only.
(Exclude corner guard dimensions)
- Refer to the chart on page MCGF-3 for available dimensions.
- Carrying handle is set to the center of top face.
(Carrying handle is not available for D length of 224mm and smaller.)

2 Select Color Type

Code	S B Silver / Black	S G Silver / Gray	S N Silver / Navy	S R Silver / Red
Color				

3 Select Handle Type

- Carrying handle model is not available for D length of 224mm and smaller.

Black handle **B**



Gray handle **G**



No handle **N**



Confirm Product No.

Confirm an assigned product number in the following order format as below.

Product no. MCGF

- -
W H D

-
Color code Handle Type

Example : W = 186 mm, H = 152 mm, D = 245 mm, Silver / Navy color, with Gray handle

MCGF 186 - 152 - 245 SN - G

Lead time

Custom Size Only
Custom Size + Hole Milling

7 business days (1 ~ 3 pcs)
10 business days (1 ~ 3 pcs)

Order Inquiry

For more information, contact us here at sales@takachi-el.co.jp

MCGF Size Chart

Refer to the below chart for available sizes.

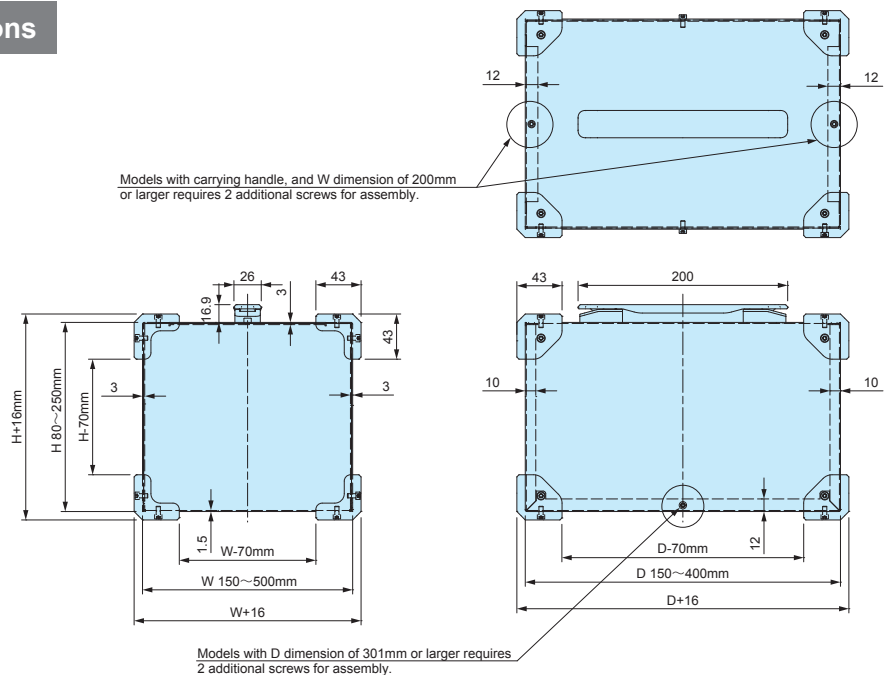
■ [—] sizes are not available.

■ Models with carrying handle, and W dimension of 200mm or larger requires 2 additional screws for assembly.

W	H	D	16 screw fixing points						18 screw fixing points			
			150~174	175~199	200~224	225~249	250~274	275~299	300~324	325~349	350~374	375~400
150~199	80~99	100~124	○	○	○	○	○	○	○	○	○	○
		125~149	○	○	○	○	○	○	○	○	○	○
200~249	80~99	100~124	○	○	○	○	○	○	○	○	○	○
		125~149	○	○	○	○	○	○	○	○	○	○
		150~174	—	—	○	○	○	○	○	○	○	○
		175~199	—	—	—	○	○	○	○	○	○	○
		200~224	—	—	—	—	○	○	○	○	○	○
250~299	80~99	100~124	○	○	○	○	○	○	○	○	○	○
		125~149	○	○	○	○	○	○	○	○	○	○
		150~174	—	—	○	○	○	○	○	○	○	○
		175~199	—	—	—	○	○	○	○	○	○	○
		200~224	—	—	—	—	○	○	○	○	○	○
		225~250	—	—	—	—	—	○	○	○	○	○
300~349	80~99	100~124	○	○	○	○	○	○	○	○	○	○
		125~149	○	○	○	○	○	○	○	○	○	○
		150~174	—	—	○	○	○	○	○	○	○	○
		175~199	—	—	—	○	○	○	○	○	○	○
		200~224	—	—	—	—	○	○	○	○	○	○
		225~250	—	—	—	—	—	○	○	○	○	○
		250~274	—	—	—	—	—	○	○	○	○	○
350~399	80~99	100~124	○	○	○	○	○	○	○	○	○	○
		125~149	○	○	○	○	○	○	○	○	○	○
		150~174	—	—	○	○	○	○	○	○	○	○
		175~199	—	—	—	○	○	○	○	○	○	○
		200~224	—	—	—	—	○	○	○	○	○	○
		225~250	—	—	—	—	—	○	○	○	○	○
		250~274	—	—	—	—	—	○	○	○	○	○
400~449	80~99	100~124	○	○	○	○	○	○	○	○	○	○
		125~149	○	○	○	○	○	○	○	○	○	○
		150~174	—	—	○	○	○	○	○	○	○	○
		175~199	—	—	—	○	○	○	○	○	○	○
		200~224	—	—	—	—	○	○	○	○	○	○
		225~250	—	—	—	—	—	○	○	○	○	○
		250~274	—	—	—	—	—	○	○	○	○	○
450~500	80~99	100~124	○	○	○	○	○	○	○	○	○	○
		125~149	○	○	○	○	○	○	○	○	○	○
		150~174	—	—	○	○	○	○	○	○	○	○
		175~199	—	—	—	○	○	○	○	○	○	○
		200~224	—	—	—	—	○	○	○	○	○	○
		225~250	—	—	—	—	—	○	○	○	○	○
		250~274	—	—	—	—	—	○	○	○	○	○

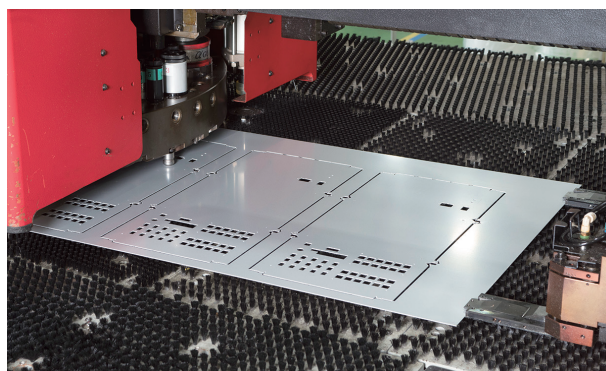
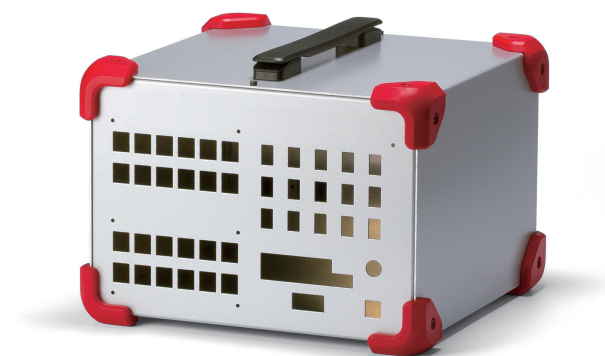
■ Carrying handle model is not available for D length of 224mm and smaller.

MCGF dimensions

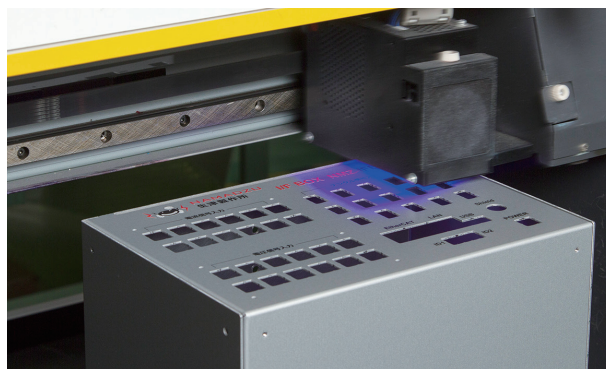
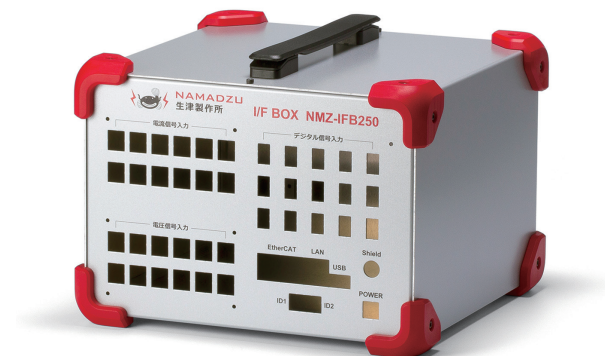


CUSTOMIZATION EXAMPLE

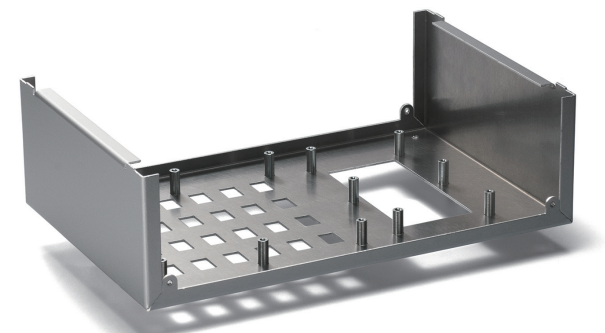
PUNCH PRESS



INKJET PRINTING

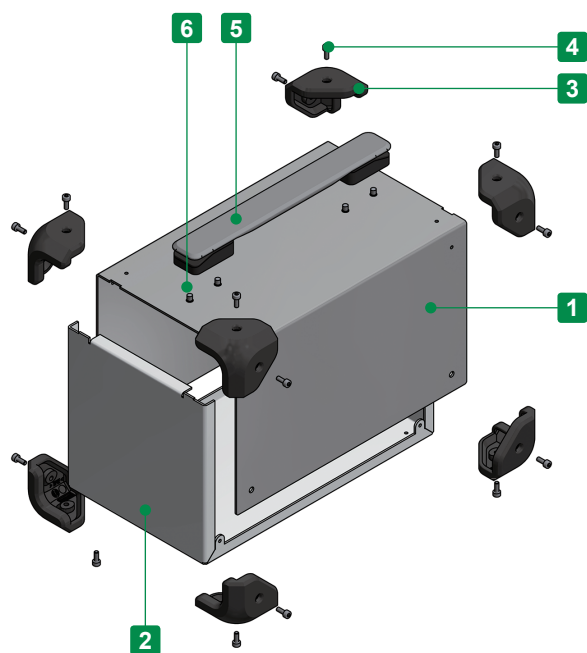


SELF CLINCHING STANDOFF

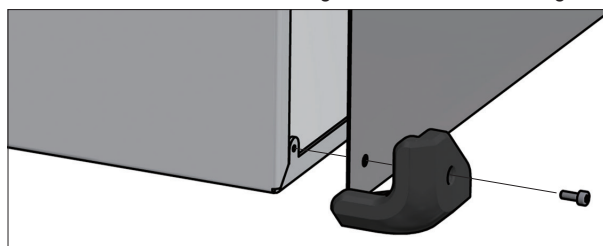




Conductive



- Adjustable sizes available in 1mm intervals, with W dimension from 150 ~ 500mm, D dimension from 150 ~ 400mm, and H dimension from 80 ~ 250mm.
- Custom sized stainless steel case with shockproof and anti-slip elastomer corner guards.
- Corner guards are available in 4 different color variations.
- Customizable with, and without carrying handles.
- SUS304 stainless steel allows the enclosure to be conductive.
- Stainless steel case and corner guard with screw fastening.



Components

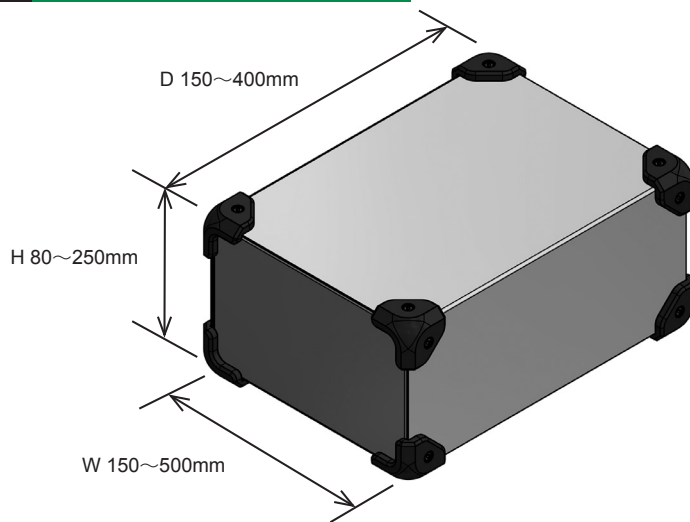
No.	Part name	Pcs	Material	Color / Finish
1	Top Cover	1	Stainless steel SUS304	Bright annealed (BA)
2	Base	1	Stainless steel SUS304	Bright annealed (BA)
3	Corner guard	8	TPE	Black • Gray • Navy • Red
4	Case / Corner guard screw (Hexagonal M4-8)	16 / 18 / 20	Stainless steel	Unfinished
5	Carrying handle	1	PU • PA6 • ABS • Steel	Black • Gray
6	Carrying handle screw (M5-8)	4	Steel	Trivalent chromate

■ Hexagonal wrench included.

■ No. 5 and 6 are available for carrying handle types only.

1 Specify Dimensions

Specify dimensions in 1mm intervals.



Caution

- W, H and D dimensions are external dimensions of stainless steel case only.
(Exclude corner guard dimensions)
- Refer to the chart on page MCGS-3 for available dimensions.
- Carrying handle is set to the center of top face.
(Carrying handle is not available for D length of 224mm and smaller.)

2 Select Color Type

Code	B Black	G Gray	N Navy	R Red
Color				

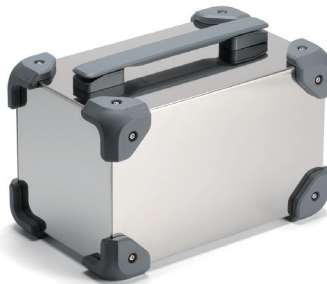
3 Select Handle Type

- Carrying handle model is not available for D length of 224mm and smaller.

Black handle [B]



Gray handle [G]



No handle [N]



Confirm Product No.

Confirm an assigned product number in the following order format as below.

Product no. MCGS

- - -
 W H D Color code Handle Type

Example : W = 222 mm, H = 111 mm, D = 333 mm, Red color Corner Guard with Black handle

MCGS 222 - 111 - 333 R - B

Lead time

Custom Size Only
Custom Size + Hole Milling

9 business days (1 ~ 10 pcs)
10 business days (1 ~ 10 pcs)

Order Inquiry

For more information, contact us here at sales@takachi-el.co.jp

MCGS Size Chart

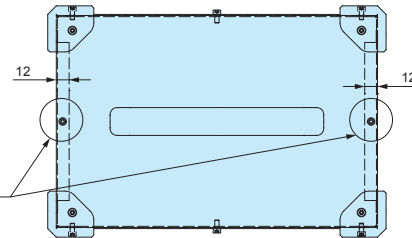
Refer to the below chart for available sizes.

■ [—] sizes are not available.

■ Models with carrying handle, and W dimension of 200mm or larger requires 2 additional screws for assembly.

W	H	D	16 screw fixing points						18 screw fixing points			
			150~174	175~199	200~224	225~249	250~274	275~299	300~324	325~349	350~374	375~400
150~199	80~99	100~124	○	○	○	○	○	○	○	○	○	○
		125~149	○	○	○	○	○	○	○	○	○	○
200~249	80~99	100~124	○	○	○	○	○	○	○	○	○	○
		125~149	○	○	○	○	○	○	○	○	○	○
		150~174	—	—	○	○	○	○	○	○	○	○
		175~199	—	—	—	○	○	○	○	○	○	○
		200~224	—	—	—	—	○	○	○	○	○	○
250~299	80~99	100~124	○	○	○	○	○	○	○	○	○	○
		125~149	○	○	○	○	○	○	○	○	○	○
		150~174	—	—	○	○	○	○	○	○	○	○
		175~199	—	—	—	○	○	○	○	○	○	○
		200~224	—	—	—	—	○	○	○	○	○	○
		225~250	—	—	—	—	—	○	○	○	○	○
300~349	80~99	100~124	○	○	○	○	○	○	○	○	○	○
		125~149	○	○	○	○	○	○	○	○	○	○
		150~174	—	—	○	○	○	○	○	○	○	○
		175~199	—	—	—	○	○	○	○	○	○	○
		200~224	—	—	—	—	○	○	○	○	○	○
		225~250	—	—	—	—	—	○	○	○	○	○
		250~274	—	—	—	—	—	○	○	○	○	○
350~399	80~99	100~124	○	○	○	○	○	○	○	○	○	○
		125~149	○	○	○	○	○	○	○	○	○	○
		150~174	—	—	○	○	○	○	○	○	○	○
		175~199	—	—	—	○	○	○	○	○	○	○
		200~224	—	—	—	—	○	○	○	○	○	○
		225~250	—	—	—	—	—	○	○	○	○	○
		250~274	—	—	—	—	—	○	○	○	○	○
400~449	80~99	100~124	○	○	○	○	○	○	○	○	○	○
		125~149	○	○	○	○	○	○	○	○	○	○
		150~174	—	—	○	○	○	○	○	○	○	○
		175~199	—	—	—	○	○	○	○	○	○	○
		200~224	—	—	—	—	○	○	○	○	○	○
		225~250	—	—	—	—	—	○	○	○	○	○
		250~274	—	—	—	—	—	○	○	○	○	○
450~500	80~99	100~124	○	○	○	○	○	○	○	○	○	○
		125~149	○	○	○	○	○	○	○	○	○	○
		150~174	—	—	○	○	○	○	○	○	○	○
		175~199	—	—	—	○	○	○	○	○	○	○
		200~224	—	—	—	—	○	○	○	○	○	○
		225~250	—	—	—	—	—	○	○	○	○	○
		250~274	—	—	—	—	—	○	○	○	○	○

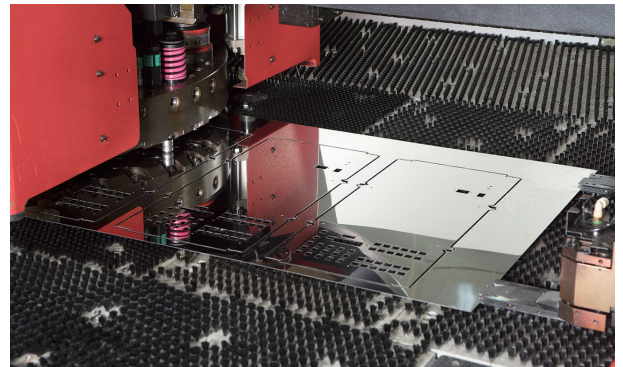
■ Carrying handle model is not available for D length of 224mm and smaller.



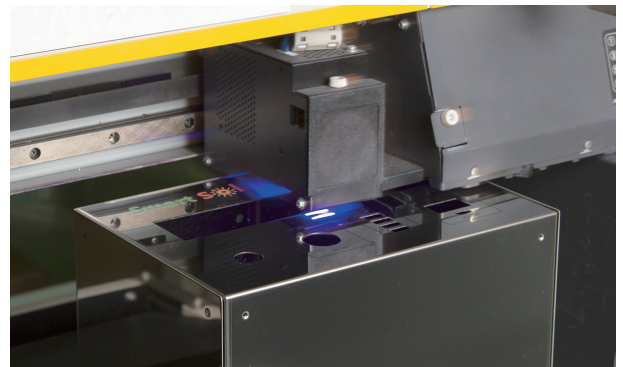
Technical drawing of a rectangular plate with dimensions and mounting details. The plate has a width of 43 and a height of 10. The mounting holes are spaced 200 apart. The plate is shown with a top view and a side view. The side view shows a thickness of 12. The mounting holes are labeled D-70mm and D 150~400mm. The overall dimensions are D+16.

CUSTOMIZATION EXAMPLE

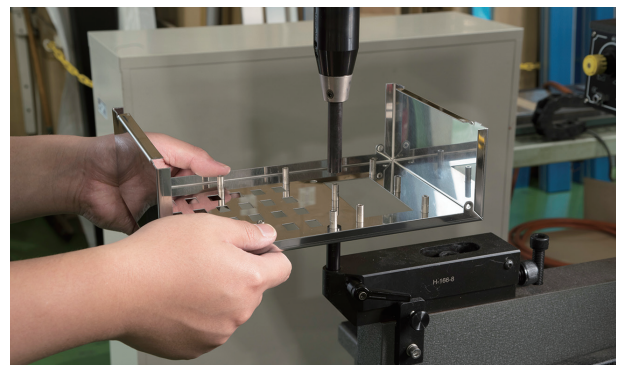
PUNCH PRESS



INKJET PRINTING



SELF CLINCHING STANDOFF



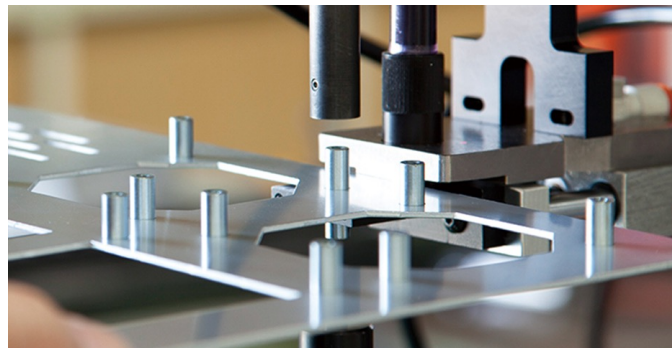
SELF-CLINCHING STANDOFF / STUD / NUT



Easy attaching of self-clinching fasteners into simple through-holes.

A specialized press machine for clinching is utilized to ensure that the standoffs / studs / nuts are securely attached.

117 different kinds of standoffs / studs / nuts are available, in addition to a non-through hole concealed-head type.

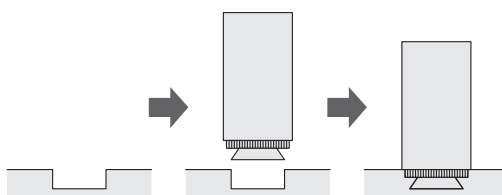
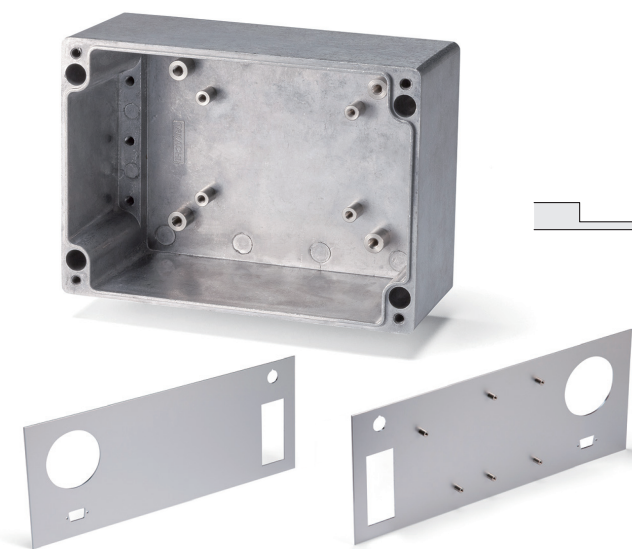


CONCEALED-HEAD SELF-CLINCHING STANDOFFS

Installed into recessed pockets so that one side of the panel remains unmarked.

Standoffs can be mounted onto 1.5mm or thicker material without requiring a through-hole to be milled.

Concealed-head standoffs/studs ensure that the IP rating (for waterproof type enclosure) is maintained.



Concealed-head standoffs/studs give an aesthetically better finish on the enclosure.

A recess cut is made on the internal side, and the standoffs are press-inserted in.

● Mounting Mark Visibility

Thickness	Mark visibility	
	M3	M4
1.5mm	△	×
2.0mm	○	○
2.5mm	○	○
3.0mm ~	○	○

● Almost invisible
○ Barely visible
△ Somewhat visible
× Very visible

Example : Clinching M4 standoff on 1.5mm thick material.

Mounting is possible on 1.5mm thick material. Mounting mark would be almost invisible on 2.5mm or thicker material.

STUD WELDING

Welded fasteners on aluminium objects. Standoffs and studs with minimal surface weld marks can be produced. Welding process is available on raw aluminium material only (not available for painted or anodized aluminium) as welding requires the material to be conductive.

