

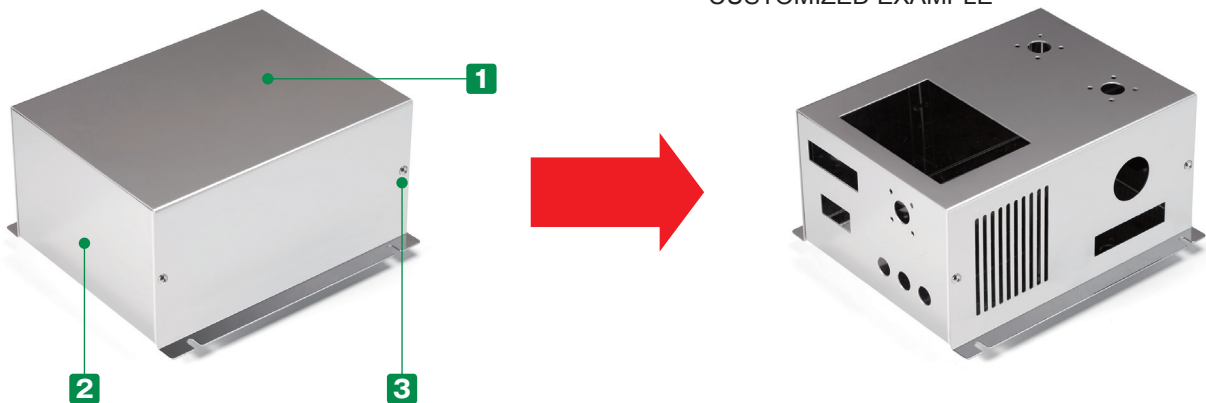
MBSF SERIES

CUSTOM SIZED FLANGED STAINLESS STEEL ENCLOSURE



- Adjustable sizes available in 1mm intervals, with W dimensions from 50 ~ 500mm, D dimensions from 50 ~ 400mm, and H dimensions from 20 ~ 250mm.
- Wall mount flange holes available in 2 models: 2-hole, and 4-hole types.
- SUS304 stainless steel allows the enclosure to be conductive.

CUSTOMIZED EXAMPLE

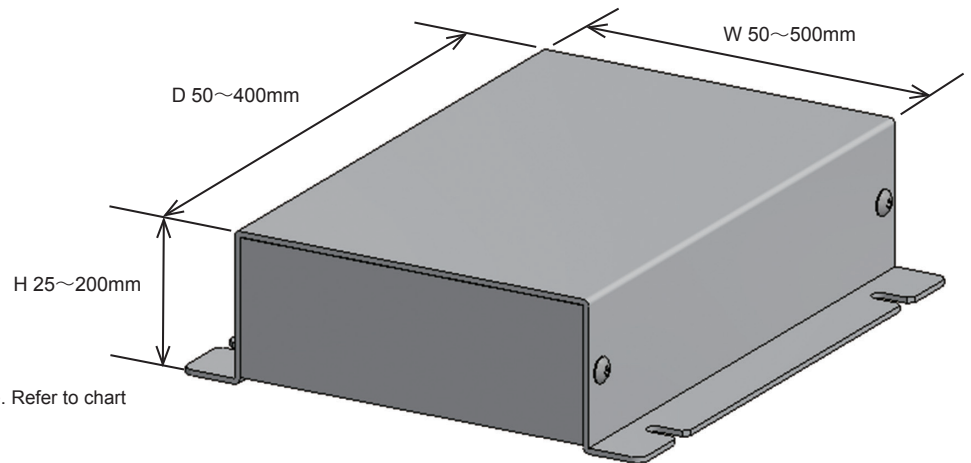


Components

No.	Part name	Pcs	Material	Color / Finish
1	Cover	1	Stainless steel SUS304	Bright annealed (BA)
2	Base	1	Stainless steel SUS304	Bright annealed (BA)
3	Screw (Truss M3-5)	4 or 6	Stainless steel	Unfinished

1 Specify Dimensions

Specify dimensions in 1mm intervals.



Caution : Not all size combinations are possible. Refer to chart for more information.

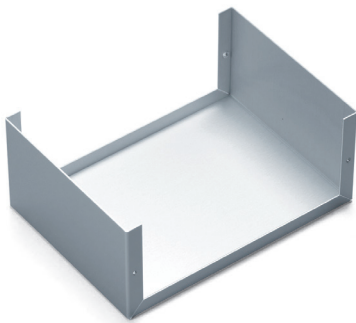
■ Panel thickness and base types vary by W / H / D dimensions.

Refer to the chart on page MBS-3 for A08, B10 or B12 type selection by W, H & D dimensions.

Base Type A

[A10] Type

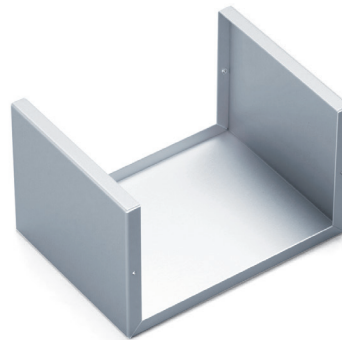
W : 200 • H : 100 • D : 400 or smaller
Type A : Standard • Panel thickness : 1.0mm



Base Type B

[B10] Type

W : 300 • H : 200 • D : 400 or smaller
Type B : Reinforced • Panel thickness : 1.0mm



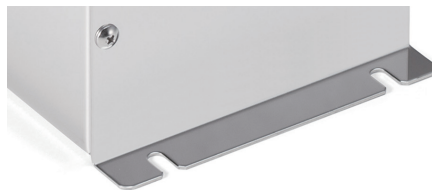
[B12] Type

W : 500 • H : 200 • D : 400 or smaller
Type B : Reinforced • Panel thickness : 1.2mm

2 Select Flange-hole Type



2 (1 on each side)



4 (2 on each side)

Confirm Product No.

Confirm an assigned product number in the following order format as below.

Product no. MBSF

155

W

80

H

200

D

A

Base type

10

Panel thickness

4

Flange hole

Example : W = 155 mm, H = 80 mm, D = 200 mm, A base type in panel thickness of 1.0mm, 4 flange holes

Lead time

Custom Size Only

9 business days (1 ~ 3 pcs)

Custom Size + Hole Milling

10 business days (1 ~ 3 pcs)

Order Inquiry

For more information, contact us here at sales@takachi-el.co.jp

MBSF Type Chart

Refer to the below chart for A10, B10 or B12 type selection by W, H & D dimensions.

[A10] Type

Standard • Panel thickness : 1.0mm

[B10] Type

Reinforced • Panel thickness : 1.0mm

[B12] Type

Reinforced • Panel thickness : 1.2mm

■ [—] sizes are not available.

W	H	D	4x fixing screw points										6x fixing screw points			
			50~74	75~99	100~125	126~150	151~175	176~200	201~225	226~250	251~275	276~300	301~325	326~350	351~375	376~400
50~99	25~35	25~35	A10	A10	A10	A10	A10	A10	A10	A10	A10	A10	A10	A10	A10	A10
		36~50	—	A10	A10	A10	A10	A10	A10	A10	A10	A10	B10	B10	B10	B10
100~150	25~29	25~29	—	A10	A10	A10	A10	A10	B10	B10	B10	B10	—	—	—	—
		30~50	—	A10	A10	A10	A10	A10	B10	B10	B10	B10	B12	B12	B12	B12
		51~75	—	—	A10	A10	A10	A10	B10	B10	B10	B10	B12	B12	B12	B12
		76~100	—	—	—	A10	A10	A10	B10	B10	B10	B10	B12	B12	B12	B12
151~200	30~50	25~29	—	A10	A10	A10	A10	A10	B10	B10	B10	B10	—	—	—	—
		30~50	—	A10	A10	A10	A10	A10	B10	B10	B10	B10	B12	B12	B12	B12
		51~75	—	—	B10	B10	B10	B10	B10	B10	B10	B10	B12	B12	B12	B12
		76~100	—	—	—	B10	B10	B10	B10	B10	B10	B10	B12	B12	B12	B12
		101~125	—	—	—	—	B10	B10	B10	B10	B10	B10	B12	B12	B12	B12
		126~150	—	—	—	—	—	B10	B10	B10	B10	B10	B12	B12	B12	B12
201~250	25~29	25~29	—	B10	B10	B10	B10	B10	B10	B10	B10	B10	—	—	—	—
		30~50	—	B10	B10	B10	B10	B10	B10	B10	B10	B10	B12	B12	B12	B12
		51~75	—	—	B10	B10	B10	B10	B10	B10	B10	B10	B12	B12	B12	B12
		76~100	—	—	—	B10	B10	B10	B10	B10	B10	B10	B12	B12	B12	B12
		101~125	—	—	—	—	B10	B10	B10	B10	B10	B10	B12	B12	B12	B12
		126~150	—	—	—	—	—	B10	B10	B10	B10	B10	B12	B12	B12	B12
		151~175	—	—	—	—	—	—	B10	B10	B10	B10	B12	B12	B12	B12
		176~200	—	—	—	—	—	—	—	B10	B10	B10	B12	B12	B12	B12
251~300	30~50	25~29	—	B10	B10	B10	B10	B10	B10	B10	B10	B10	—	—	—	—
		30~50	—	B10	B10	B10	B10	B10	B10	B10	B10	B10	B12	B12	B12	B12
		51~75	—	—	B10	B10	B10	B10	B10	B10	B10	B10	B12	B12	B12	B12
		76~100	—	—	—	B10	B10	B10	B10	B10	B10	B10	B12	B12	B12	B12
		101~125	—	—	—	—	B10	B10	B10	B10	B10	B10	B12	B12	B12	B12
		126~150	—	—	—	—	—	B10	B10	B10	B10	B10	B12	B12	B12	B12
		151~175	—	—	—	—	—	—	B10	B10	B10	B10	B12	B12	B12	B12
		176~200	—	—	—	—	—	—	—	B10	B10	B10	B12	B12	B12	B12
301~350	30~50	30~50	—	—	—	B12	B12	B12	B12	B12	B12	B12	B12	B12	B12	B12
		51~75	—	—	—	B12	B12	B12	B12	B12	B12	B12	B12	B12	B12	B12
		76~100	—	—	—	—	B12	B12	B12	B12	B12	B12	B12	B12	B12	B12
		101~125	—	—	—	—	B12	B12	B12	B12	B12	B12	B12	B12	B12	B12
		126~150	—	—	—	—	—	B12	B12	B12	B12	B12	B12	B12	B12	B12
		151~175	—	—	—	—	—	—	B12	B12	B12	B12	B12	B12	B12	B12
		176~200	—	—	—	—	—	—	—	B12	B12	B12	B12	B12	B12	B12
		176~200	—	—	—	—	—	—	—	B10	B10	B10	B12	B12	B12	B12
351~400	30~50	30~50	—	—	—	B12	B12	B12	B12	B12	B12	B12	B12	B12	B12	B12
		51~75	—	—	—	B12	B12	B12	B12	B12	B12	B12	B12	B12	B12	B12
		76~100	—	—	—	—	B12	B12	B12	B12	B12	B12	B12	B12	B12	B12
		101~125	—	—	—	—	B12	B12	B12	B12	B12	B12	B12	B12	B12	B12
		126~150	—	—	—	—	—	B12	B12	B12	B12	B12	B12	B12	B12	B12
		151~175	—	—	—	—	—	—	B12	B12	B12	B12	B12	B12	B12	B12
		176~200	—	—	—	—	—	—	—	B12	B12	B12	B12	B12	B12	B12
		176~200	—	—	—	—	—	—	—	B12	B12	B12	B12	B12	B12	B12
401~450	30~50	30~50	—	—	—	B12	B12	B12	B12	B12	B12	B12	B12	B12	B12	B12
		51~75	—	—	—	B12	B12	B12	B12	B12	B12	B12	B12	B12	B12	B12
		76~100	—	—	—	—	B12	B12	B12	B12	B12	B12	B12	B12	B12	B12
		101~125	—	—	—	—	B12	B12	B12	B12	B12	B12	B12	B12	B12	B12
		126~150	—	—	—	—	—	B12	B12	B12	B12	B12	B12	B12	B12	B12
		151~175	—	—	—	—	—	—	B12	B12	B12	B12	B12	B12	B12	B12
451~500	30~50	30~50	—	—	—	B12	B12	B12	B12	B12	B12	B12	B12	B12	B12	B12
		51~75	—	—	—	B12	B12	B12	B12	B12	B12	B12	B12	B12	B12	B12
		76~100	—	—	—	—	B12	B12	B12	B12	B12	B12	B12	B12	B12	B12
		101~125	—	—	—	—	B12	B12	B12	B12	B12	B12	B12	B12	B12	B12
		126~150	—	—	—	—	—	B12	B12	B12	B12	B12	B12	B12	B12	B12
		151~175	—	—	—	—	—	—	B12	B12	B12	B12	B12	B12	B12	B12

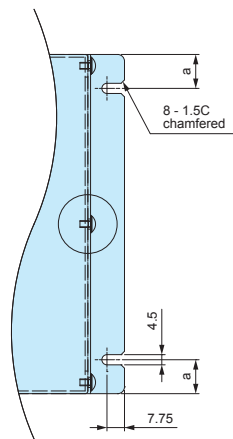
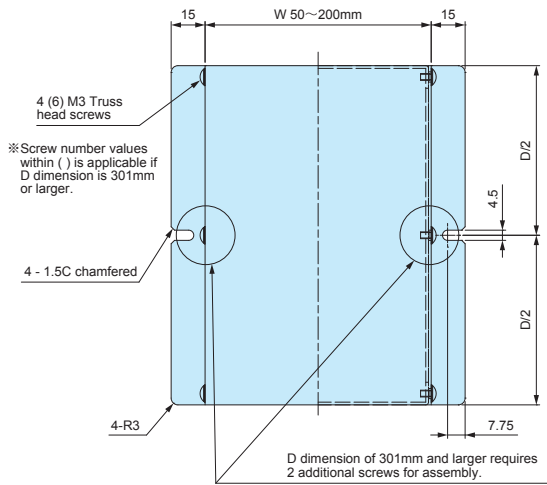
MBSF dimensions

[A10] Type

Standard • Panel thickness : 1.0mm

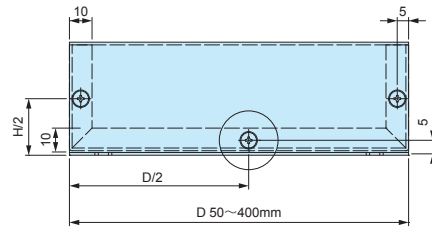
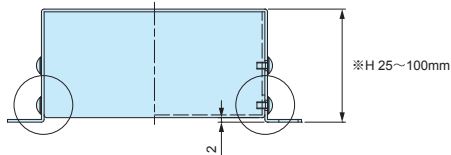
2-hole flange type

4-hole flange type



D dimension	a
50 ~ 60	10
61 ~ 140	15
141 ~ 240	20
241 ~ 400	30

Caution : Refer to the available dimensions on the chart.



[B10] Type

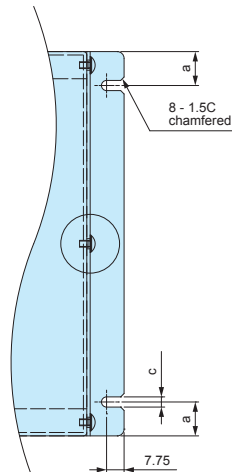
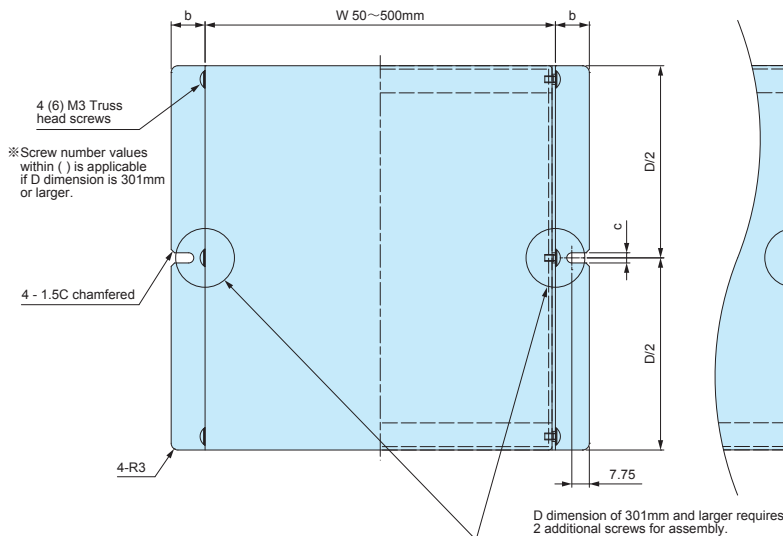
Reinforced • Panel thickness : 1.0mm

[B12] Type

Reinforced • Panel thickness : 1.2mm

2-hole flange type

4-hole flange type



D dimension	a	b	c
50 ~ 60	10	15	4.5
61 ~ 140	15	15	4.5
141 ~ 240	20	15	4.5
241 ~ 400	30	20	5.5

Caution : Refer to the available dimensions on the chart.

