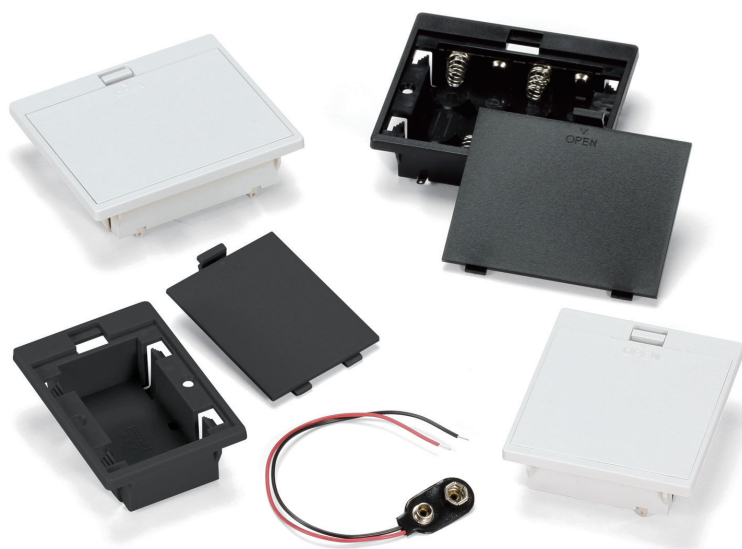


LD SERIES

SNAP-IN BATTERY BOX



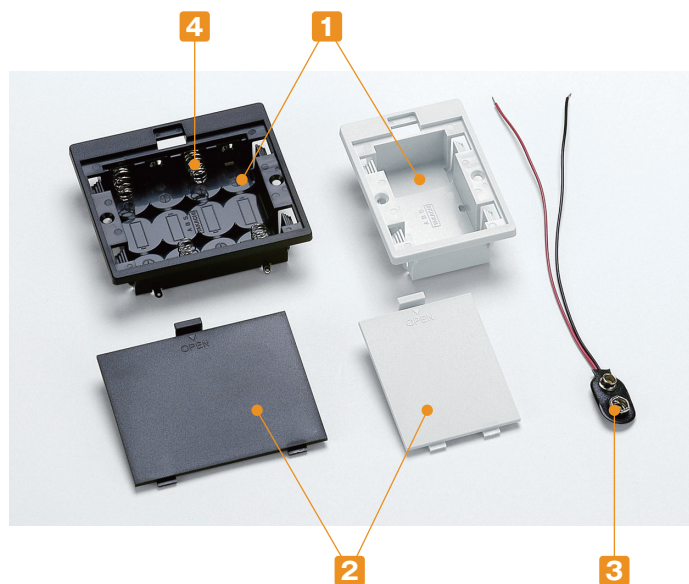
Installation Example



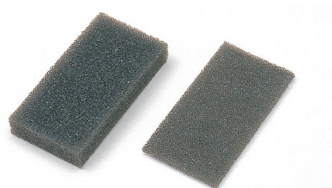
Technical Data

Operating temperature: -10°C ~ +60°C

- Snap-in battery box for enclosures.
 - Suitable to be installed into enclosures with a panel thickness of 1.0mm to 3.0mm.
 - Screw mounting is also possible with built-in M3 countersunk holes.
 - ⊕ ⊖ markings are available to avoid incorrect placement of the battery.
 - LD-006P box can be used with battery holder (see page SN • MP • BH211-1 ~ SN • MP • BH211-4).
 - Battery dimensions may vary depending on country and brand.
- Use optional battery cushion sponge to preventing rattling.



Accessories (Optional parts)



Battery cushion sponge SCM series
See page BH9V-2 • SCM-1

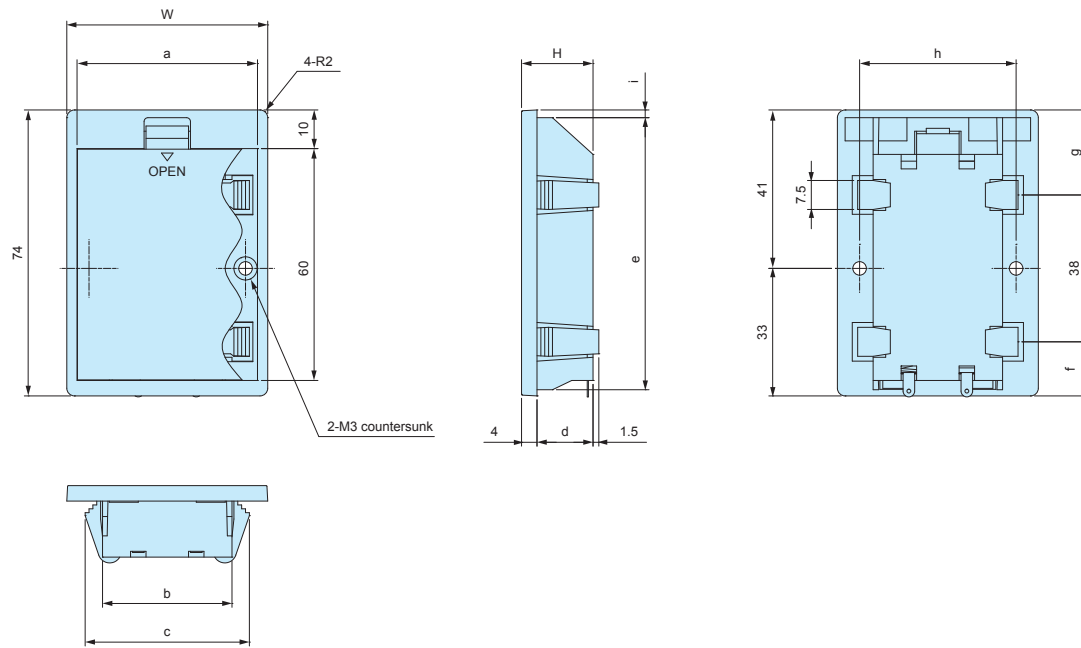
Components (LD-006P models)

| No. | Part name | Material | Color |
|-----|--------------|----------------------------------|-------------------|
| 1 | Box | ABS (UL94HB) • ABS (UL94V-0) | Black • White |
| 2 | Cover | ABS (UL94HB) • ABS (UL94V-0) | Black • White |
| 3 | Battery snap | PVC + Copper wire (UL1007 AWG26) | Black • Red/Black |

Components (LD-2 • LD-3 • LD-4 models)

| No. | Part name | Material | Color |
|-----|-----------------|---------------------------------|---------------|
| 1 | Box | ABS (UL94HB) • ABS (UL94V-0) | Black • White |
| 2 | Cover | ABS (UL94HB) • ABS (UL94V-0) | Black • White |
| 4 | Battery contact | Brass t = 0.3 • Steel wire Φ0.6 | Nickel plated |

LD dimensions

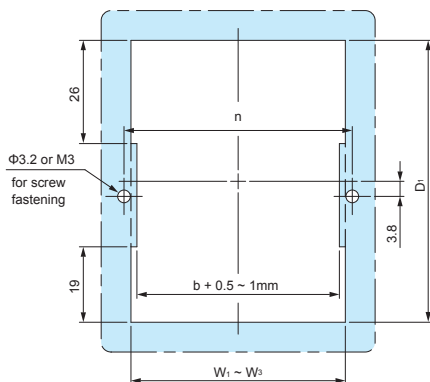


- DXF/DWG/PDF drawings available on our website.
- Battery contact position vary by models.
- See page MP-1 for the details of battery snap.

| Product no. | W | H | a | b | c | d | e | f | g | h | i |
|-------------|------|------|------|------|------|------|------|-------|-------|------|-----|
| LD-006P□ | 52 | 21.5 | 46.7 | 33.5 | 42.5 | 17.5 | 70.4 | 14 | 22 | 40.5 | 2 |
| LD-2□ | 52 | 18.5 | 46.7 | 33.5 | 42.5 | 14.5 | 70.4 | 14 | 22 | 40.5 | 2 |
| LD-3□ | 64.5 | 18.5 | 60.5 | 48 | 56.5 | 14.5 | 70.2 | 14.25 | 21.75 | 53 | 2.1 |
| LD-4□ | 82 | 18.5 | 77 | 63.5 | 72.5 | 14.5 | 70.4 | 14 | 22 | 70.1 | 2 |

Mounting hole

※Snap-in mounting hole required would be $D_1 \times W_1 \sim W_3$.



Hole dimensions

| Product no. | W1 (thickness $t = 1.0$) | W2 (thickness $t = 2.0$) | W3 (thickness $t = 3.0$) | D_1 | n |
|------------------|---------------------------|---------------------------|---------------------------|-------|------|
| LD-006P□ • LD-2□ | 36.5 | 38.5 | 40.5 | 70.6 | 40.5 |
| LD-3□ | 51 | 52.5 | 54 | 70.4 | 53 |
| LD-4□ | 66.5 | 68.5 | 70.5 | 70.6 | 70.1 |

- $W_1 \sim W_3$ values differ depending on panel thickness; see above table to determine required dimension.
- For mounting on panel thickness not listed above, please confirm before proceeding.

Product no. / Feature

| Product no. | | | Matching battery | Weight (g) | Suitable cushion sponge |
|-------------|--------------|----------|------------------|------------|-------------------------|
| ABS | | PC+ABS | | | |
| ● Black | ● Light gray | ● White | | | |
| LD-006PB | LD-006PG | LD-006PW | 9V x 1 | 24 | SCM-2 |
| LD-2B | LD-2G | LD-2W | AA x 2 | 24 | SCM-1 |
| LD-3B | LD-3G | LD-3W | AA x 3 | 26 | SCM-1 |
| LD-4B | LD-4G | LD-4W | AA x 4 | 35 | SCM-1 |

LDN SERIES

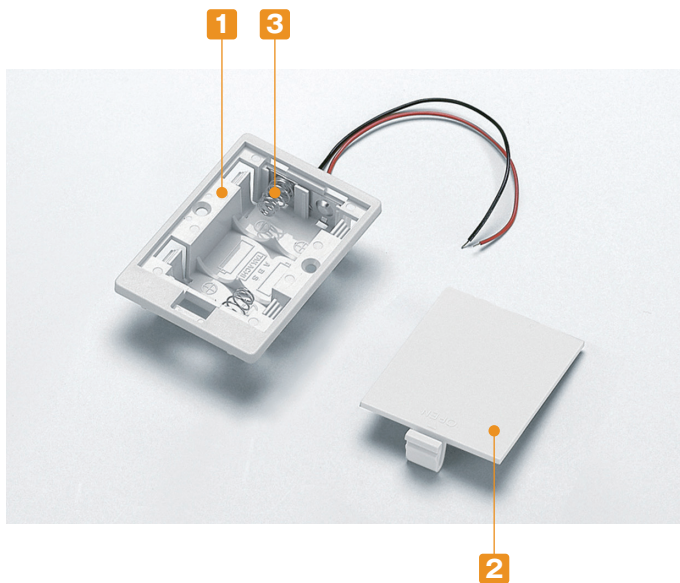
SNAP-IN BATTERY BOX with LEAD WIRE



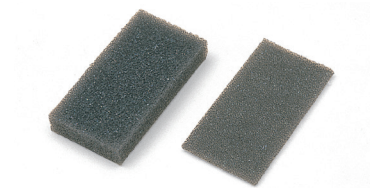
Technical Data

Operating temperature: -10°C ~ +60°C

- Snap-in battery box for enclosures.
 - Suitable to be installed into enclosures with a panel thickness of 1.0mm to 3.0mm.
 - Screw mounting is also possible with built-in M3 countersunk holes.
 - Lead-free soldered lead wire (UL certified $\ell = 140\text{mm}$).
 - \oplus \ominus markings are available to avoid incorrect placement of the battery.
 - Battery dimensions may vary depending on country and brand.
- Use optional battery cushion sponge to preventing rattling.



Accessories (Optional parts)



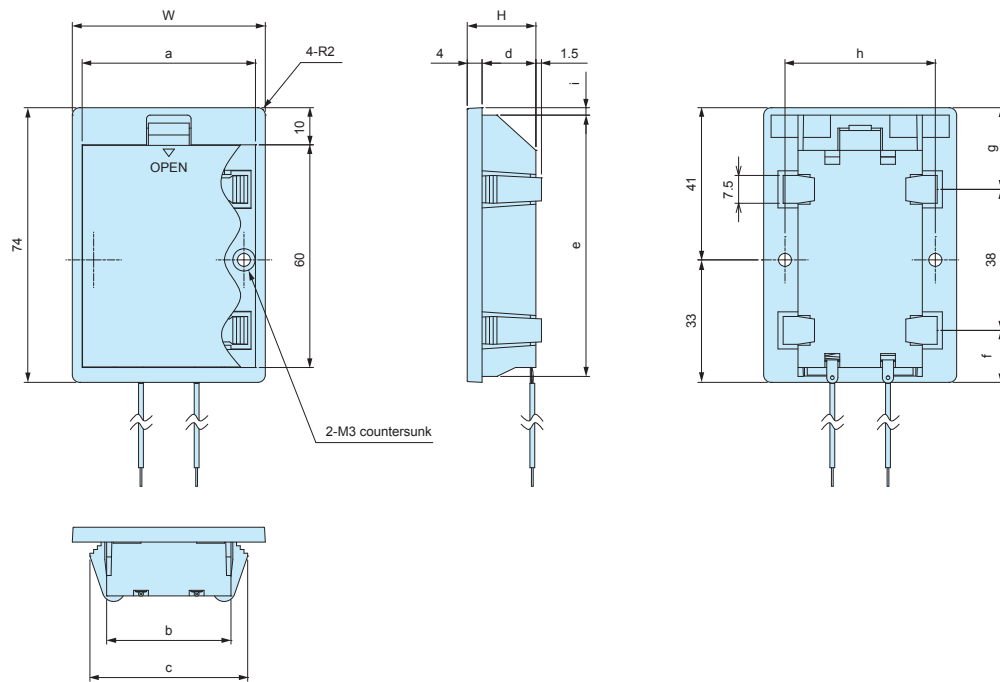
Battery cushion sponge SCM series
See page BH9V-2 • SCM-1

Components (LD-2 • LD-3 • LD-4 models)

| No. | Part name | Material | Color |
|-----|--------------------------------|--|------------------------------|
| 1 | Box | ABS (UL94HB) • ABS (UL94V-0) | Black • White |
| 2 | Cover | ABS (UL94HB) • ABS (UL94V-0) | Black • White |
| 3 | Battery contact with Lead wire | Brass $t = 0.3$ • Steel wire $\Phi 0.6$ PVC + Copper wire $L = 140\text{mm}$ (UL1007 AWG26) | Nickel plated Red • Black |

LDN dimensions

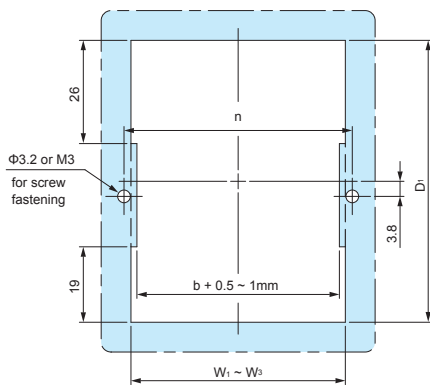
- DXF/DWG/PDF drawings available on our website.
- Lead wire • battery contact position vary by models.
- See page MP-1 for the details of battery snap.



| Product no. | W | H | a | b | c | d | e | f | g | h | i |
|-------------|------|------|------|------|------|------|------|-------|-------|------|-----|
| LDN-2□ | 52 | 18.5 | 46.7 | 33.5 | 42.5 | 14.5 | 70.4 | 14 | 22 | 40.5 | 2 |
| LDN-3□ | 64.5 | 18.5 | 60.5 | 48 | 56.5 | 14.5 | 70.2 | 14.25 | 21.75 | 53 | 2.1 |
| LDN-4□ | 82 | 18.5 | 77 | 63.5 | 72.5 | 14.5 | 70.4 | 14 | 22 | 70.1 | 2 |

Mounting hole

※Snap-in mounting hole required would be $D_1 \times W_1 \sim W_3$



Hole dimensions

| Product no. | W1 (thickness $t = 1.0$) | W2 (thickness $t = 2.0$) | W3 (thickness $t = 3.0$) | D_1 | n |
|-------------|---------------------------|---------------------------|---------------------------|-------|------|
| LDN-2□ | 36.5 | 38.5 | 40.5 | 70.6 | 40.5 |
| LDN-3□ | 51 | 52.5 | 54 | 70.4 | 53 |
| LDN-4□ | 66.5 | 68.5 | 70.5 | 70.6 | 70.1 |

- $W_1 \sim W_3$ values differ depending on panel thickness; see above table to determine required dimension.
- For mounting on panel thickness not listed above, please confirm before proceeding.

Product no. / Feature

| Product no. | | | Matching battery | Weight (g) | Suitable cushion sponge |
|-------------|--------------|---------|------------------|------------|-------------------------|
| ABS | | PC+ABS | | | |
| ● Black | ● Light gray | ● White | | | |
| LDN-2B | LDN-2G | LDN-2W | AA x 2 | 24 | SCM-1 |
| LDN-3B | LDN-3G | LDN-3W | AA x 3 | 26 | SCM-1 |
| LDN-4B | LDN-4G | LDN-4W | AA x 4 | 35 | SCM-1 |



Technical Data

Operating temperature: -10°C ~ +60°C

Mount Example



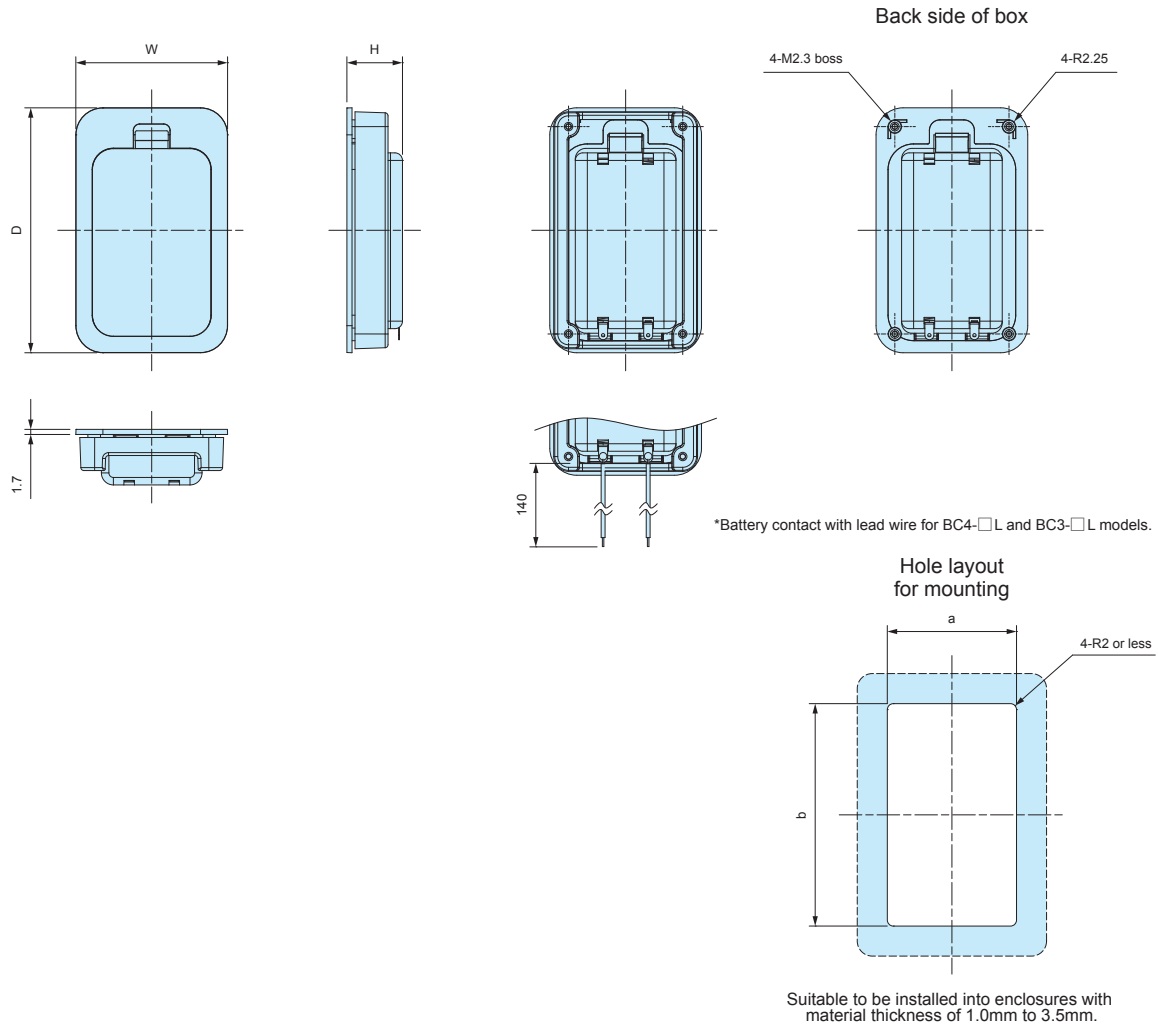
- Suitable to be installed into enclosures with material thickness of 1.0mm to 3.5mm.
- Cover can be opened/closed without any tool for easy battery replacement.
- 5 different battery layouts are available as AA x 2, AA x 3, AA x 4, AAA x 2 and AAA x 4. Each layout comes in 2 models: with lead-wire, and without lead-wire.
- ⊕ ⊖ markings prevents incorrect placement of battery.
- The dimensions of alkaline or manganese batteries may vary depending on country and brand. Use optional battery cushion sponge to prevent rattling.

Components

| No. | Part name | Pcs | Material | Color / Finish |
|-----|--|-------|--|------------------------------|
| 1 | Box | 1 | ABS UL94V-0 | Black • Off-white |
| 2 | Cover | 1 | ABS UL94V-0 | Black • Off-white |
| 3 | Frame | 1 | ABS UL94V-0 | Black • Off-white |
| 4 | Battery contact Lead wire (BC-L models) | 1 set | Battery contact : Brass & steel wire Lead wire : PVC + Copper wire (UL1007 AWG26) | Nickel plated Black • Red |
| 5 | Self-tapping screw | 4 | Steel | Nickel plated |

BC dimensions

- DXF/DWG/PDF/STP drawings available on our website.
- The shape and position of battery contacts vary by model.



Type: Without Lead Wire

Product no. / Details

| Product no. | | Dimensions | | | | | Battery layout | Weight (g) |
|-------------|-------------|------------|------|------|------|----|----------------|------------|
| ● Black | ● Off-white | W | H | D | a | b | | |
| BC4-2-B | BC4-2-W | 40 | 14.8 | 78.5 | 32.5 | 71 | *AAA x 2 | 24.5 |
| BC4-4-B | BC4-4-W | 62 | 14.8 | 78.5 | 54.5 | 71 | *AAA x 4 | 34.5 |
| BC3-2-B | BC3-2-W | 50.5 | 18.5 | 81.5 | 43 | 74 | *AA x 2 | 31.5 |
| BC3-3-B | BC3-3-W | 65.5 | 18.5 | 81.5 | 58 | 74 | *AA x 3 | 39 |
| BC3-4-B | BC3-4-W | 80.5 | 18.5 | 81.5 | 73 | 74 | *AA x 4 | 46 |

*Alkaline or manganese batteries

Type: With Lead Wire

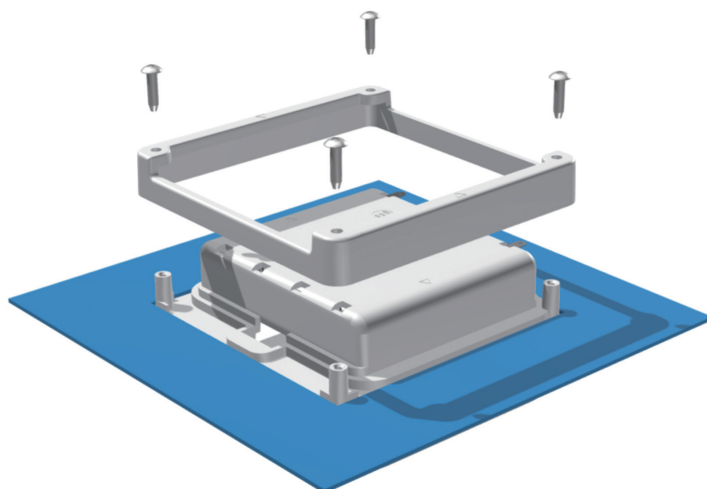
Product no. / Details

| Product no. | | Dimensions | | | | | Battery layout | Weight (g) |
|-------------|-------------|------------|------|------|------|----|----------------|------------|
| ● Black | ● Off-white | W | H | D | a | b | | |
| BC4-2L-B | BC4-2L-W | 40 | 14.8 | 78.5 | 32.5 | 71 | *AAA x 2 | 25.5 |
| BC4-4L-B | BC4-4L-W | 62 | 14.8 | 78.5 | 54.5 | 71 | *AAA x 4 | 35.5 |
| BC3-2L-B | BC3-2L-W | 50.5 | 18.5 | 81.5 | 43 | 74 | *AA x 2 | 32.5 |
| BC3-3L-B | BC3-3L-W | 65.5 | 18.5 | 81.5 | 58 | 74 | *AA x 3 | 40 |
| BC3-4L-B | BC3-4L-W | 80.5 | 18.5 | 81.5 | 73 | 74 | *AA x 4 | 47 |

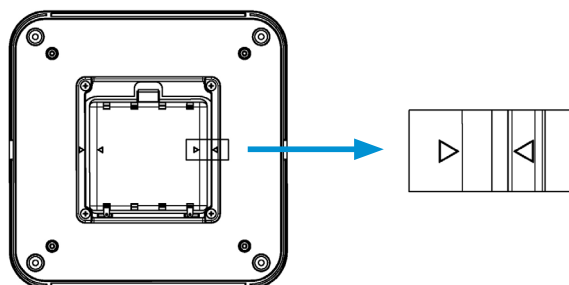
*Alkaline or manganese batteries

How to mount on the enclosures

- Insert battery box into the milled hole first, and fit the frame on the back side. Once mounted, secure the frame with screws.



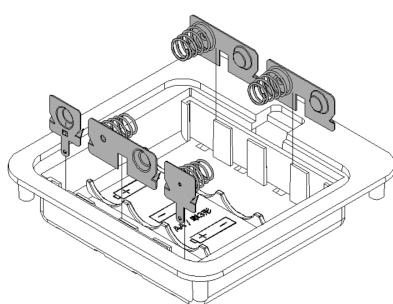
- For BC3-4□ models, ▷ markings are shown on the frame. Install by matching the markings.



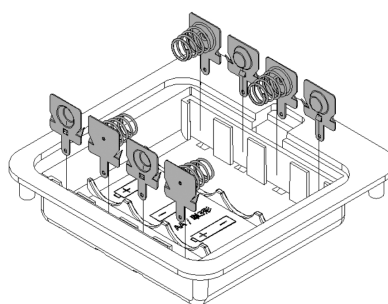
Parallel circuit conversion on BC series battery box

- BC-3□ models can be converted from a series to a parallel circuit. See below illustration for further details.
- IT series (IT-3 models) optional battery contacts can be used for parallel circuit conversion. (See website for more information)
- Use caution when installing or replacing the terminals to avoid the damage to the material.
- Parallel series conversion is available via our customization services.

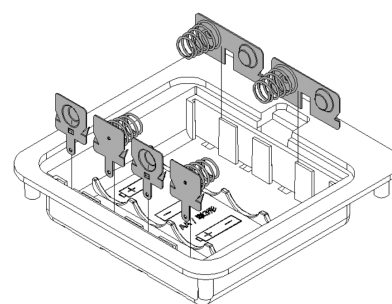
Conversion Example



Series Circuit (Standard)

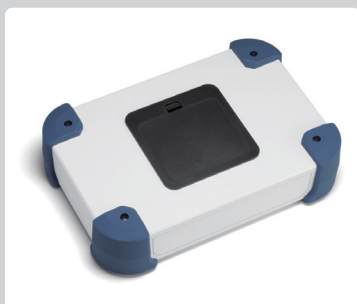


Parallel Circuit (4 batteries)



Parallel Circuit (2 batteries x 2)

Customization Available



For more information, contact us here:

Online form: https://www.takachi-enclosure.com/contact/form_contact
E-mail : sales@takachi-el.co.jp

Mount Example



■ BC series battery boxes can also be mounted on aluminium enclosures.