

# **TAKACHI** HINGED INSPECTION WINDOW



**Protection Cover**

**Connectors · Switches  
Circuit Breakers · Meters**

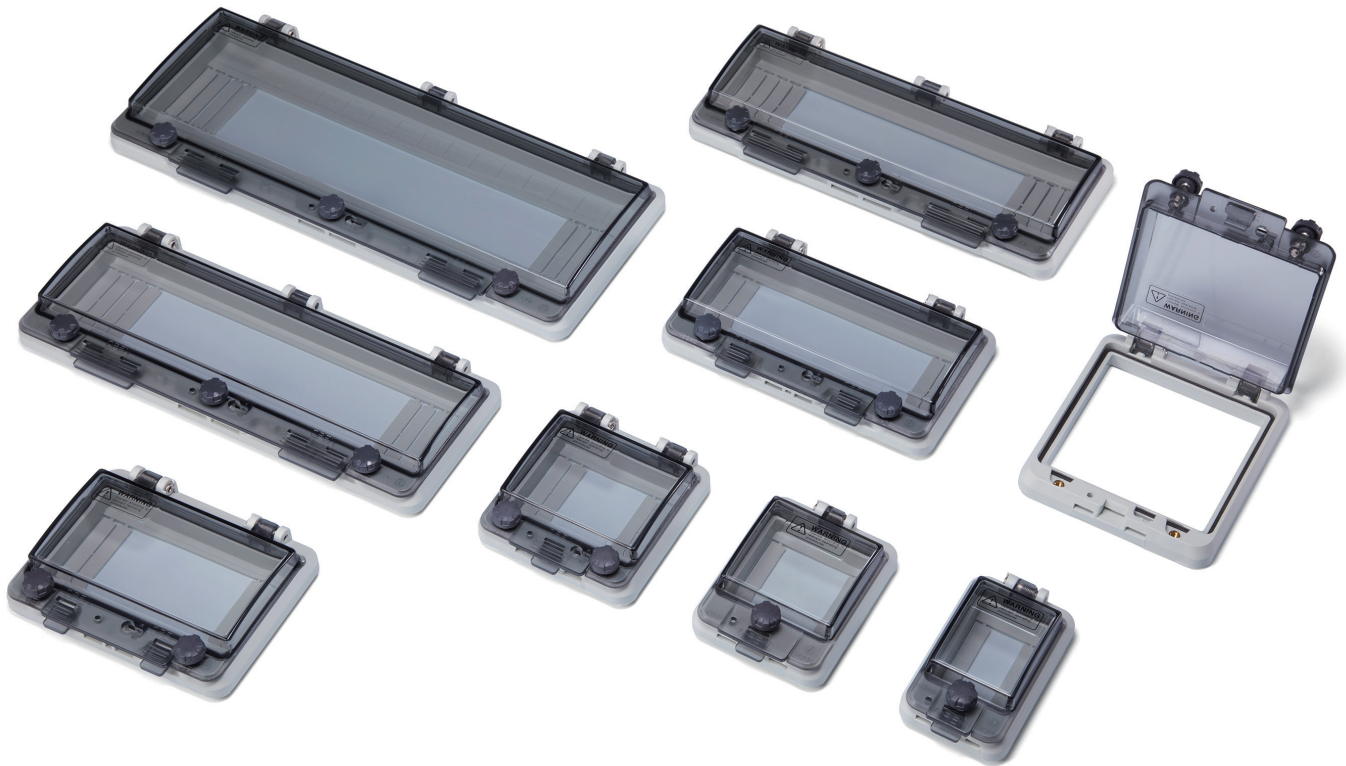
**Smart  
Design**



**10 Different Sizes Available for Various Applications**



**CASE BOX RACK & CUSTOM  
TAKACHI ELECTRONICS ENCLOSURE CO., LTD.**



#### Technical Data



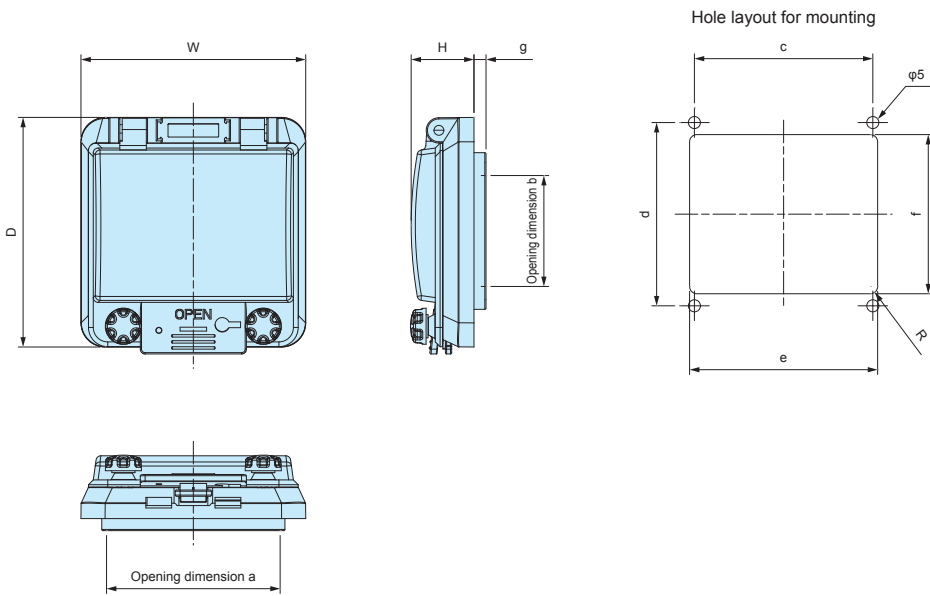
Protection class : IP64  
 IW0412B }  
 IW0413B } IP54 Category 2\*  
 IW0416B } (\*Prevents dust ingress with no negative pressure inside)  
 IW0416A }  
 Operating temperature : -20°C ~ +75°C  
 Recommended torque to install : 1.1N • m ~ 1.5N • m  
 Required panel thickness to install : 2.0 ~ 6.0mm

- IP64 water resistant see-through hinged inspection window.
- Smartly designed window for protection of switches and displays, etc.  
Use in situations where component status, access and maintenance is necessary.
- Knurled thumb screws for easy securing.
- Be careful not to get fingers caught on the spring loaded self-closing cover.
- See TECHNICAL INFORMATION on our website for more information on the protection class IP rating.

#### Components

No.	Part name	Pcs	Material	Color / Finish
1	Cover	1	Polycarbonate UL94V-2	Smoke gray
2	Base	1	PC + ABS UL94V-0	Light gray
3	Gasket	2	Polyurethane	Black
4	Knurled thumb screw	1 / 2	PC + ABS • Stainless steel	Black • Unfinished
—	Screw	4 / 6	Steel	Zinc plated

IW dimensions



Product no. / Dimensions

Product no.	W	D	H	a	b	c	d	e	f	g	Weight (g)
IW0402B	57.2	95.2	(26)	36	46	38	76	42	62	5	69
IW0403B	75.2	95.2	(26)	54	46	56	76	60	62	5	82
IW0404B	93.2	95.2	(26)	72	46	74	76	78	66	5	98
IW0405B	107.2	121.7	(31)	86.8	87.2	88	102	92	92	—	114
IW0406B	129.2	95.2	(26)	108	46	105	76	114	66	5	122.5
IW0408B	165.2	95.2	(26)	144	46	140	76	149	66	5	145
<b>NEW</b> IW0412B	237.2	95.2	(26)	216	46	213	76	221	66	5	202
<b>NEW</b> IW0413B	255.2	95.2	(26)	234	46	230	76	239	66	5	215
<b>NEW</b> IW0416B	309.2	95.2	(26)	288	46	282	76	293	66	5	254
<b>NEW</b> IW0416A	309.2	125.2	(26)	288	46	282	106	293	66	5	314

APPLICATION EXAMPLE

Circuit Breaker Cover



Connector Cover



Command Panel Cover



Switch Cover

