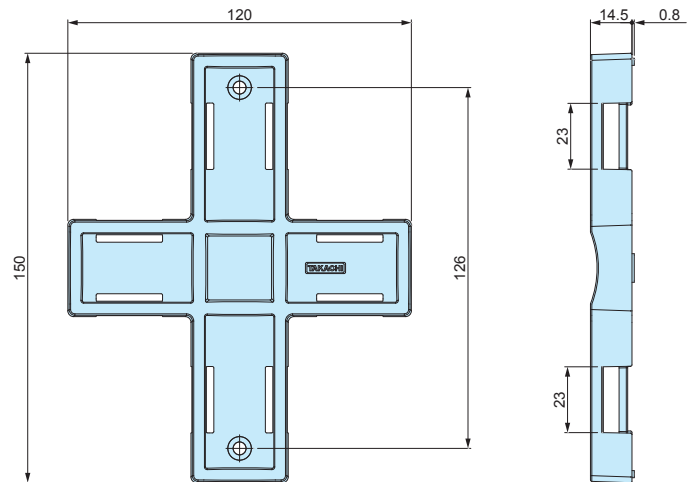
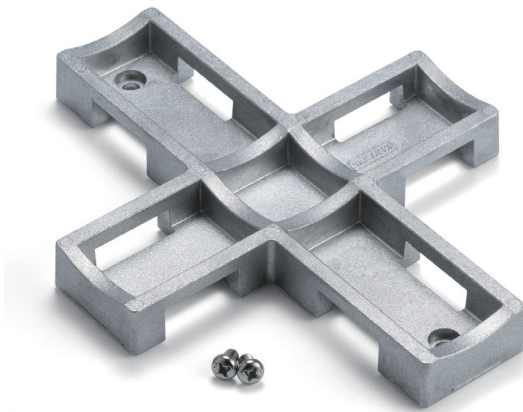


WGMB-2N

DIECAST ALUMINIUM POLE MOUNTING BRACKET for DW • DWH



- Pole mount bracket made from robust diecast aluminium.
- DXF/DWG/PDF/STP drawings available on our website.
- Hole milling is not required when installing the mount bracket, thus allowing the enclosure to maintain its protection class.
- Can be used for DW • DWH14-22-□ models.
- Pole mounting belt can be installed in either W or D direction.
- Pole mount is possible with the use of SNB or PKB series mounting belt. See page 207 ~ 208 for more details.

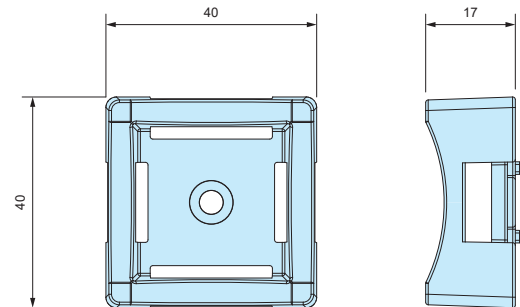
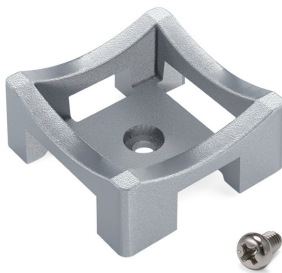
Product no. / Details

■ Stainless steel mounting screws included.

Product no.	Suitable models	Material / Finish	Weight (g)	Pack of
WGMB-2N	DW • DWH14-22-□	Diecast aluminium ADC12 / Shot blast	126	1

DWMB-1N

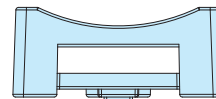
WALL MOUNTING BRACKET for DW • DWH



■ Material / Finish : Diecast aluminium ADC12 / Shot blast

- Pole mount bracket made from robust diecast aluminium.
- Hole milling is not required when installing the mount bracket, thus allowing the enclosure to maintain its protection class.
- Can be used for DW • DWH10-15-□ models.
- Pole mounting belt can be installed in either W or D direction.
- Pole mount is possible with the use of SNB or PKB series mounting belt. See page 207 ~ 208 for more details.

■ DXF/DWG/PDF/STP drawings available on our website.



Product no. / Details

Including 1x screw (Pan head M4-6 Stainless Steel Unfinished)

Product no.	Suitable models	Weight (g)	Pack of
DWMB-1N	DW • DWH10-15-□	24	1