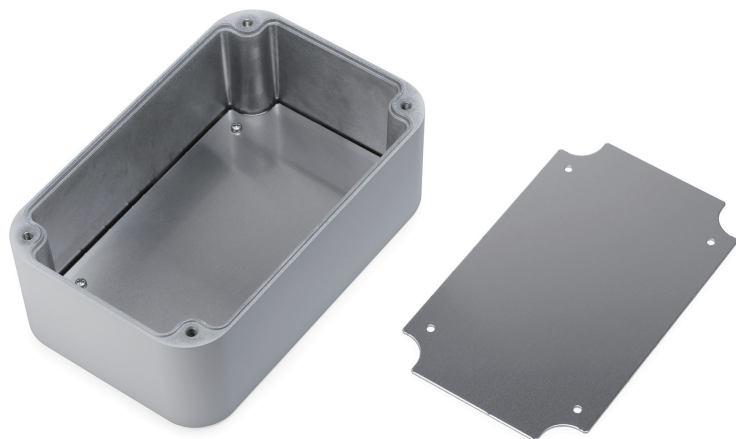
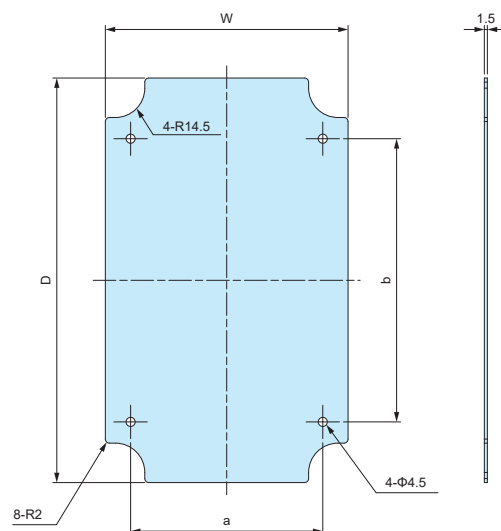


**DWMP** series**MOUNTING PLATE for DW • DWH**

■ DXF/DWG/PDF/STP drawings available on our website.



■ Material / Finish : Aluminium A1050P t1.5 / Unfinished

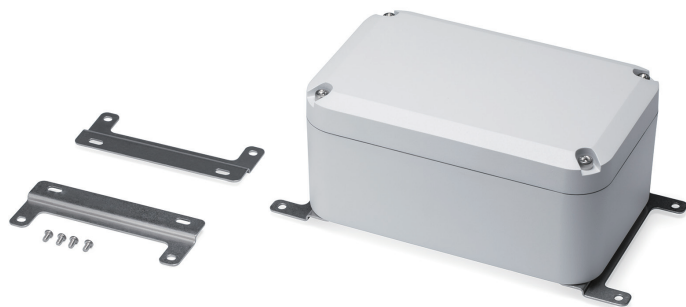
■ Covered with a protective film on one side.

■ Hole milling, clinching spacer customizations are available.  
See our website for more details.

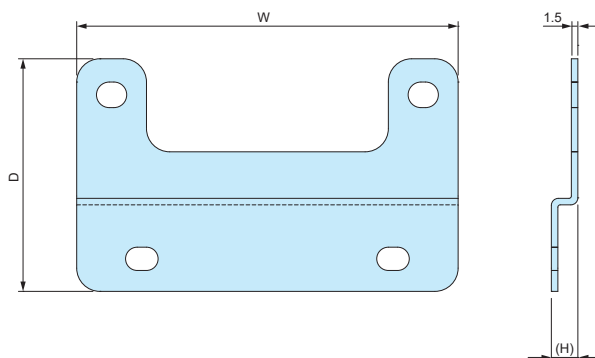
**Product no. / Details**

Including 4x screws (Pan head self tapping M4-8 Steel Trivalent chromate)

Product no.	W	D	a	b	Suitable model	Weight (g)
DWMP10-15	78	128	65	80	DW • DWH10-15-□	39
DWMP14-22	120	200	95	140	DW • DWH14-22-□	96

**DWF** series**WALL MOUNTING BRACKET for DW • DWH**

■ Material / Finish : Stainless Steel / Barrel finish

**Product no. / Details**

Including 4x screws (Pan head M4-6 Stainless Steel Unfinished)

Product no.	W	D	(H)	Suitable model	Weight (g)	Pack of
DWF-10	82	50	(5.8)	DW • DWH10-15-□	77 (2pcs)	2
DWF-15	132	50	(5.8)	DW • DWH14-22-□	107 (2pcs)	2

**SMS4-8****MOUNTING SCREW**

■ Self-tapping screws for mounting PCB and DIN Rail (FDR series - see page 100) on bosses or standoffs.

**Product no. / Details**

Product no.	Details	Material	Finish	Weight(g)	Pack of
SMS4-8	M4-8 Pan head tapping	Steel	Trivalent chromate	1 (1pc)	4