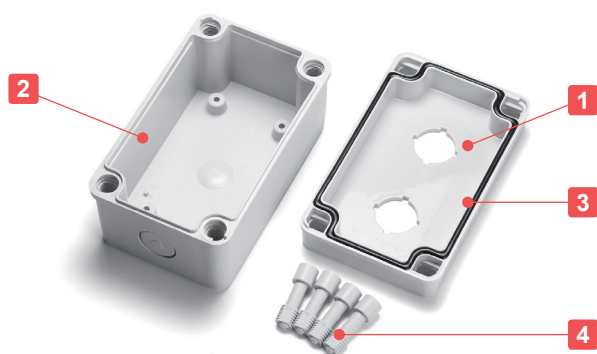




Technical Data

Protection class : IP65 {Waterproof switch
Exclusive cable gland} required
Operating Temperature : -20°C ~ +75°C
Recommended torque : 1N · m ~ 1.5N · m



- IP65 switch box with 1 ~ 4 $\Phi 22$ hole(s) on the top cover.
- Made from flame retardant UL94V-0 high heat resistant polycarbonate material.
- $\Phi 22$ knock-outs on 2 opposite ends for easy wiring access if required.
- Exclusive cable gland, B131210G for $\Phi 22$ knock-outs is available as optional parts.
- IP65 protection class is maintained with waterproof switches and the exclusive cable glands installed.
- Yellow/Black color types available as BTO (built-to-order) at a MOQ of 500 pcs. For custom color order, the material would be changed to ABS UL94HB, with an operating temperature of -10°C ~ +60°C.

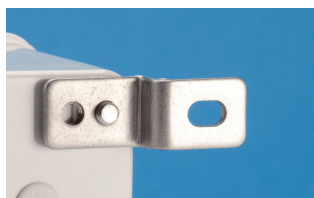
Components

No.	Part name	Pcs	Material	Color / Finish
1	Top cover	1	Polycarbonate UL94V-0	Light gray
2	Base	1	Glass fiber filled polycarbonate UL94V-0	Light gray
3	Gasket	1	Polyurethane	Black
4	Cover screw	4	Glass fiber filled nylon	White gray

Accessories (Optional parts)



Exclusive cable gland B131210G
See page 330



Stainless steel mounting bracket CK-34Z
See website



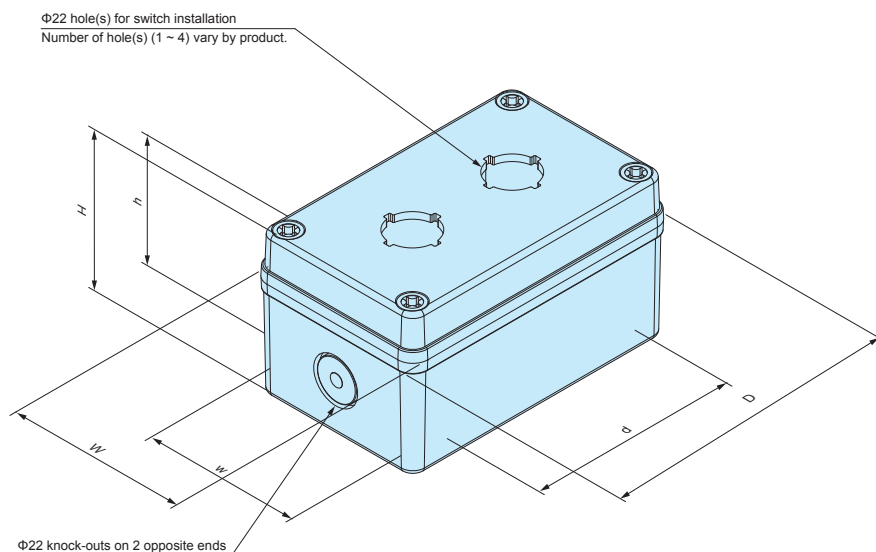
Spare cover screw CB20
See website



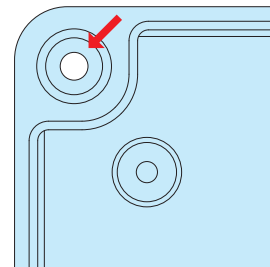
PCB mounting screw MT4-8T
See page 320

BCSB dimensions

■ DXF/DWG/PDF drawings available on our website.



- Wall mounting without an optional wall mounting bracket is possible through inserting the wall mount screw directly into the cover screw hole on the base part.



Product no. / Dimensions

Product no.	External dimensions			Internal dimensions			Switch hole(s)	Knock-outs	Weight (g)
	W	D	H	w	d	h			
BCSB081107-2201G	80	110.5	70.3	67	67	55.8	Φ22 x 1	Φ22 x 2	204
BCSB081307-2202G	80.5	130.5	70	67	87	55.6	Φ22 x 2	Φ22 x 2	222
BCSB081807-2203G	80	180	70.5	67	137	56.3	Φ22 x 3	Φ22 x 2	278
BCSB082507-2204G	80	250	71	67	207	56.3	Φ22 x 4	Φ22 x 2	364

Accessories (Optional parts)

B131210G**EXCLUSIVE CABLE GLAND for BCSB**

- Exclusive cable gland for Φ22 knock-outs on BCSB series switch box.

- The PG13.5 thread (Φ20.5) is a little smaller than Φ22 hole but is compatible for the Φ22 knock-out hole.
- Install B131210G into the very center of the Φ22 knock-out hole.

- Cap and connector are made from PA66 material, light gray color type. Sealing insert and O-ring are made from NBR material, black color type.

Technical Data

Protection class : IP65
Operating temperature : -20°C ~ +75°C



Product no. / Dimensions

Product no.	Cable range		Suitable models	Weight (g)
	Min	Max		
B131210G	7	11	BCSB series	12.7

■ DXF/DWG/PDF drawings available on our website.

BCM SERIES

BLIND PLUG for BCAS • BCAL



- Blind plug for BCAS • BCAL when installing hinges and latches.
Not usable when using cover screws.

Components

Part name	Material	Color
Blind plug	ABS	White gray

Product no. / Suitable box

Product no.	Suitable box	Pack of
BCM-1	BCAS series (Not available for BCAS050604, 050605 models)	1
BCM-2	BCAL series	1

CK SERIES

STAINLESS STEEL MOUNT BRACKET

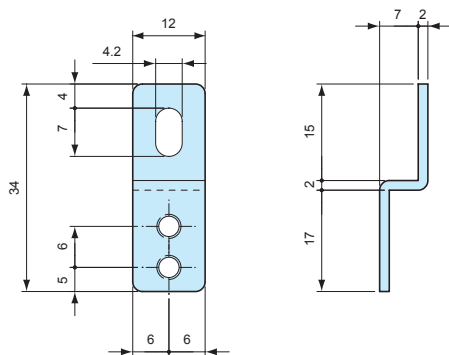


CK-34Z

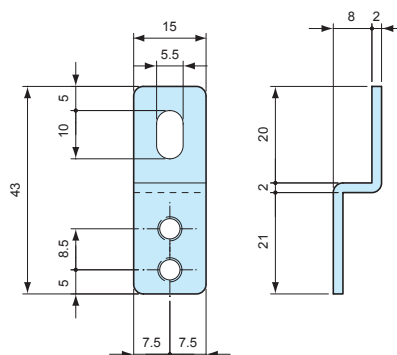


CK-26P

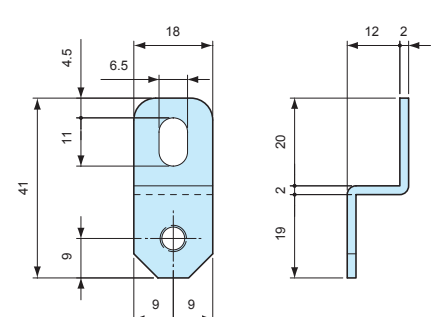
CK-34Z dimensions



CK-35P dimensions



CK-26P dimensions



- CK-34Z model requires the use of MT4-10 screw.

Product no. / Suitable box

Product no.	Material	Finish	Suitable box	Included screw	Pack of
CK-34Z	Stainless steel SUS304	Barrel finish	BCAS series (Not applicable for BCAS050604, 050605 models)	—	4
CK-35P	Stainless steel SUS304	Barrel finish	BCAS050604G, BCAS050605G	Pan head tapping M4-10	4
CK-26P	Stainless steel SUS304	Barrel finish	BCAL series	Pan head M5-10	4

MT4-10

MOUNTING SCREW

- Use together with CK-34Z.

Product no. / Feature

Product no.	Material	Finish	Pack of
MT4-10 (Pan head M4-10)	Stainless steel	Unfinished	4

MT SERIES**PCB MOUNTING SCREW**

■ Mounting screw for the bosses without insert-nut.

Product no. / Feature

Product no.	Material	Finish	Pack of
MT4-8T (Binding head tapping M4-8)	Steel	Trivalent chromate	20
MT5-8T (Binding head tapping M5-8)	Steel	Trivalent chromate	20

Suitable box chart

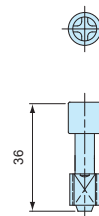
Product no.	Suitable box	Tightening torque
MT4-8T	BCAS071005, 081104, 081107, 081108, 081110, 081307, 081308, 081807, 081808, 082507, 082508, 101007, 101010, 101807, 102007, 102307, 121207, 121210, 141709, 142309, 151507, 151510, 152004, 152007, 152010, 152013, 152016, 152510, 152513, 161607, 202010, 202013, 202016, 202019, and 212310 models.	0.7N • m
MT5-8T	BCAL series	1.4N • m

CB SERIES**SPARE COVER SCREW for BCAS**

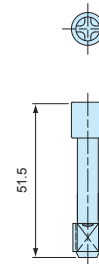
CB20

CB35

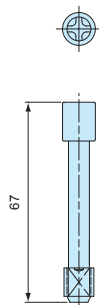
CB50



36



51.5



67

CB20

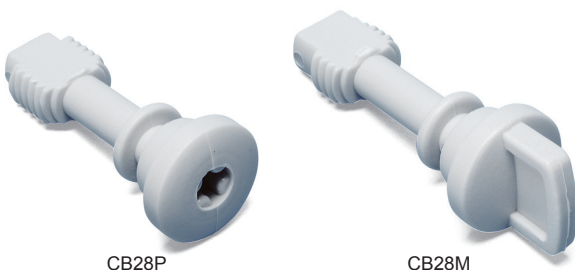
CB35

CB50

Product no. / Feature / Suitable box

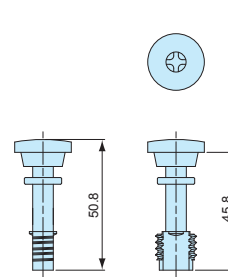
Product no.	Material	Color	Pack of
CB20	Fiberglass • Nylon	White gray	1
CB35	Fiberglass • Nylon	White gray	1
CB50	Fiberglass • Nylon	White gray	1

Product no.	Suitable box
CB20	BCAS060905, 071005, 080806, 081104, 081107, 081108, 081307, 081807, 082507, 101007, 101010, 101807, 102007, 102307, 121207, 121210, 141709, 142309, 151507, 151510, 152004, 152007, 152010, 152013, 152510, 161607, 202010, 202013, 202016, and 212310 models TMB-15PS, 20P, 20PL
CB35	BCAS081110, 081308, 081808, and 082508 models
CB50	BCAS152016, 152513, and 202019 models

CB SERIES**SPARE COVER SCREW for BCAL**

CB28P

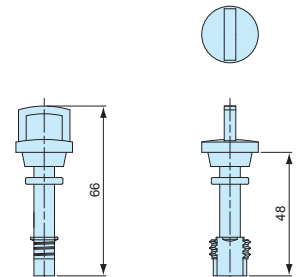
CB28M



50.8

45.8

CB28P



66

48

CB28M

Product no. / Feature / Suitable box

Product no.	Material	Color	Suitable box	Pack of
CB28P	Fiberglass • Nylon	White gray	BCAL series	1
CB28M	Fiberglass • Nylon	White gray	BCAL series	1