

AST series

INSERT NUT ADHESIVE STANDOFF

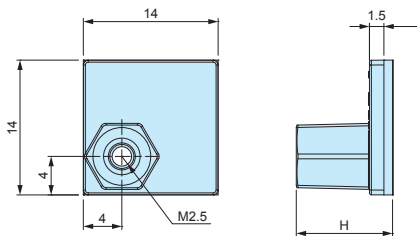


- Double-sided adhesive tape allows the standoff to be mounted quickly and easily; allows PCB mounting in non-boss enclosures.
- Convenient for installing PCBs into enclosures without the need for customization.
- Please ensure that surface is cleaned and grease-free before adhering.
- Once removed, it cannot be adhered on again.

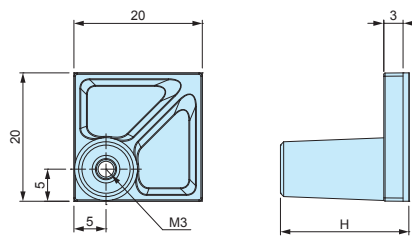
AST dimensions

■ DXF/DWG/PDF/STP drawings available on our website.

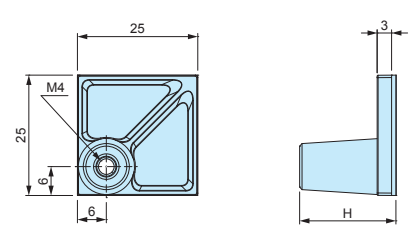
AST2.5-□



AST3-□



AST4-□



Product no. / Dimensions

Bulk package

| Product no | H dimension | Included screw | Recommended PCB Thickness (mm) | Recommended torque (N · m) | Weight (g) | Pack of | Product no | Pack of |
|------------|-------------|-----------------|--------------------------------|----------------------------|---------------|---------|--------------|---------|
| AST2.5-5B | 5 | M2.5-5 pan head | 1.0 ~ 2.0 | 0.3 | 0.6 (1 piece) | 4 | AST2.5-5B-P | 100 |
| AST2.5-10B | 10 | M2.5-5 pan head | 1.0 ~ 2.0 | 0.3 | 0.8 (1 piece) | 4 | AST2.5-10B-P | 100 |
| AST3-6B | 6 | M3-6 pan head | 1.0 ~ 3.0 | 0.4 | 1.5 (1 piece) | 4 | AST3-6B-P | 100 |
| AST3-10B | 10 | M3-6 pan head | 1.0 ~ 3.0 | 0.4 | 1.6 (1 piece) | 4 | AST3-10B-P | 100 |
| AST3-15B | 15 | M3-6 pan head | 1.0 ~ 3.0 | 0.4 | 1.8 (1 piece) | 4 | AST3-15B-P | 100 |
| AST3-20B | 20 | M3-6 pan head | 1.0 ~ 3.0 | 0.4 | 2.1 (1 piece) | 4 | AST3-20B-P | 100 |
| AST4-10.5B | 10.5 | M4-8 pan head | 1.0 ~ 3.5 | 0.8 | 2.6 (1 piece) | 4 | AST4-10.5B-P | 50 |
| AST4-20B | 20 | M4-8 pan head | 1.0 ~ 3.5 | 0.8 | 3.2 (1 piece) | 4 | AST4-20B-P | 50 |

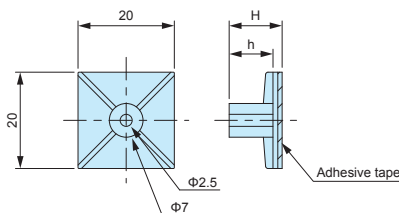
- Base material / color : Nylon 66 (UL94V-2) / Black
- Nut + screw material / finish : Steel / Trivalent chromate

- Bulk packaging is available. See "Bulk package" column above.
- Screws are not included for bulk packages.

ASR series

ADHESIVE PCB STANDOFF

ASR dimensions



■ DXF/DWG/PDF drawings available on our website.

| Technical Data |
|-------------------------------|
| Recommended torque : 0.4N · m |

- M3 tapping screw use adhesive standoff. Recommended to be used with EM-3 or EM-3-6 self-tapping screws (See page 123).
- Please ensure that surface is cleaned and grease-free before adhering.
- Once removed, it cannot be adhered on again.

Product no. / Dimensions

| Product no | H | h | Weight (g) | Pack of |
|------------|------|------|---------------|---------|
| ASR- 5 | 5.1 | 3.1 | 0.9 (1 piece) | 10 |
| ASR- 6 | 6.4 | 4.4 | 1.0 (1 piece) | 10 |
| ASR- 7 | 7.2 | 5.1 | 0.9 (1 piece) | 10 |
| ASR- 8 | 8.1 | 6.3 | 0.9 (1 piece) | 10 |
| ASR- 9 | 9 | 7 | 1.0 (1 piece) | 10 |
| ASR-11 | 11 | 9 | 1.0 (1 piece) | 10 |
| ASR-13 | 12.7 | 10.7 | 1.2 (1 piece) | 10 |
| ASR-14.5 | 14.7 | 12.8 | 1.1 (1 piece) | 10 |
| ASR-16 | 15.9 | 13.9 | 1.3 (1 piece) | 10 |
| ASR-19 | 19.1 | 17.1 | 1.4 (1 piece) | 10 |