

# Uniquely Designed Aluminium Case with distinctive features and easy-to-assemble structure!

Flat panels with a curved arc design creates a unique aesthetic appearance and allows both easy assembly and customization.



**Embedded Computer**



**Raspberry Pi Case**



**Audio Amplifier**



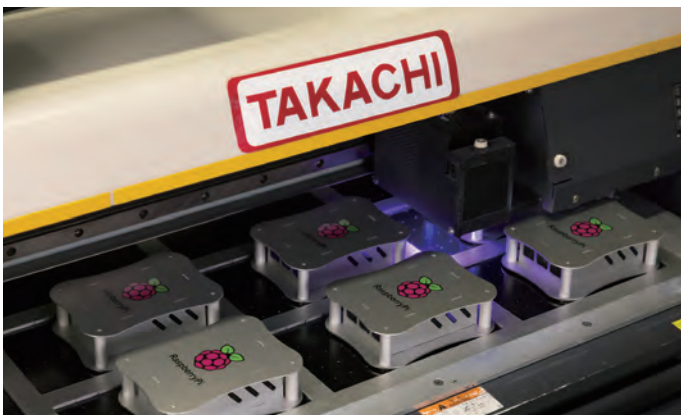
**Power Supply**



# Customization services available at TAKACHI



Fiber laser machine allows the processing of aluminium sheets with both high precision and speed.  
See page Custom-9 and website for further details.



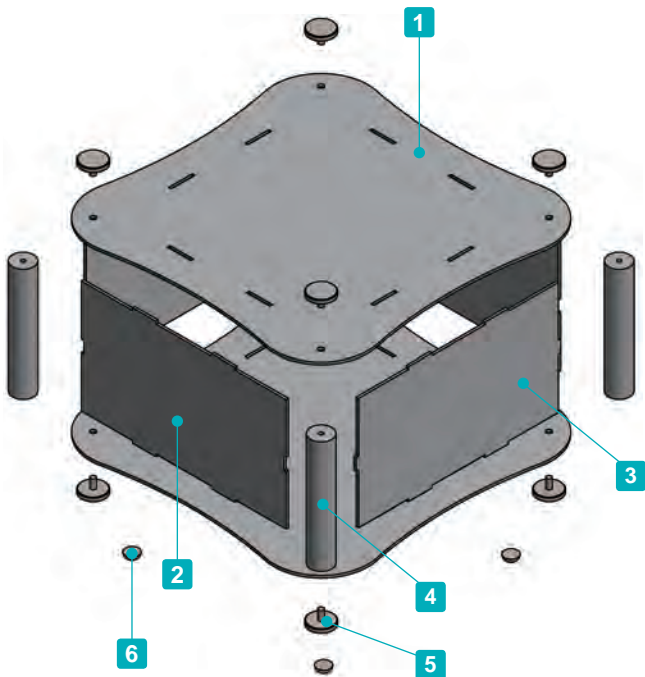
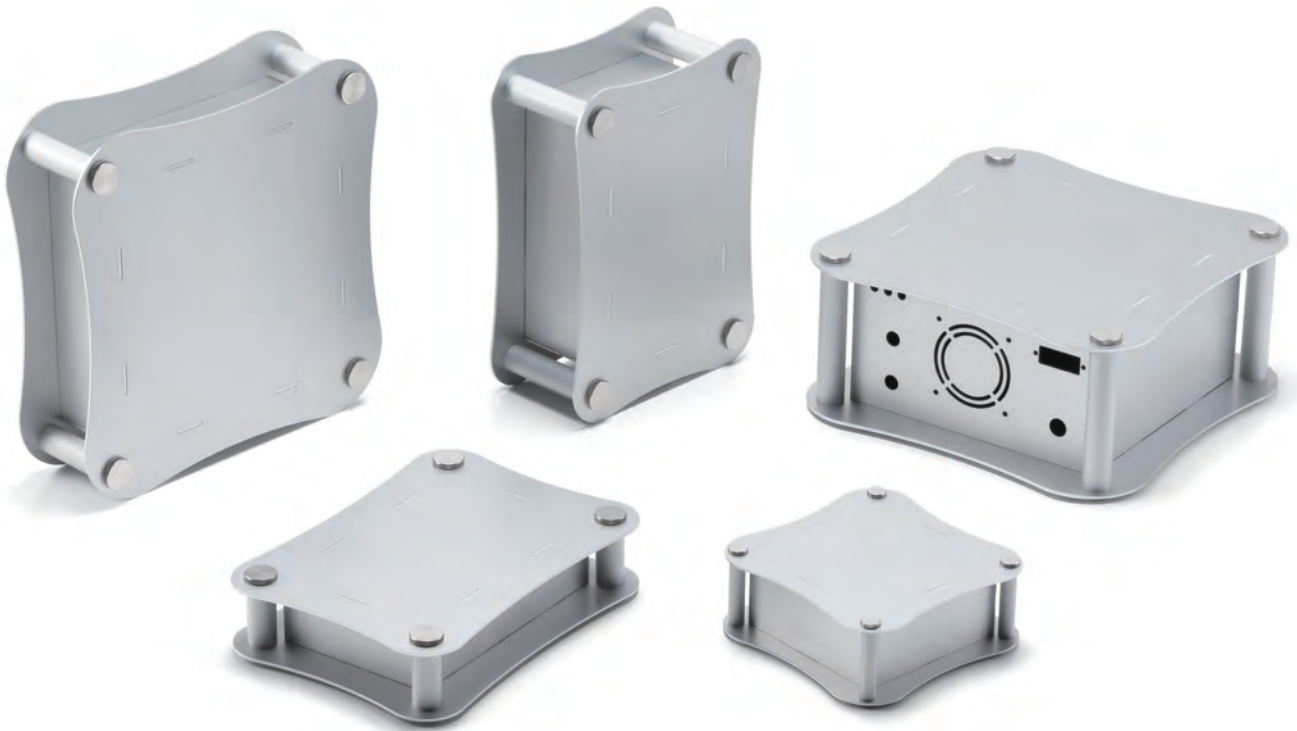
Digital inkjet printing enables high quality full color printing with minimal tooling cost.  
High resolution photo images and color gradation can also be printed with ease.  
See page Custom-3 ~ Custom-4 and website for further details.



Installation of self-clinching standoffs and nuts are possible.  
TAKACHI has over 100 different types of clinching standoffs and nuts available, which can be installed with precision and speed.  
See page Custom-11 and website for further details.

## Custom Color Anodization • Custom Color Painting





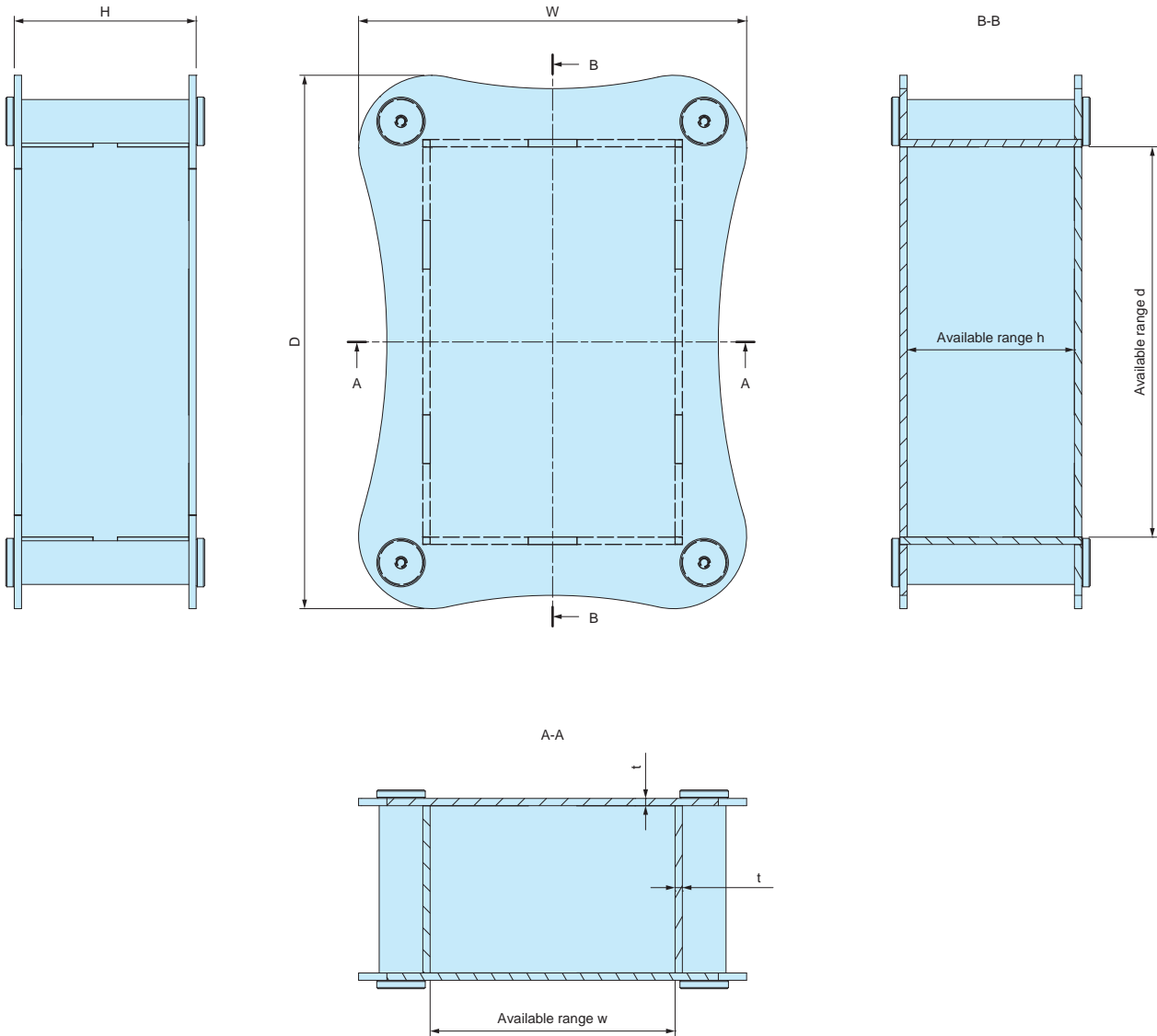
- Curved arc designed aluminium case with corner support columns.
- 6 different sizes are available.
- While elegantly designed, the flat panel structure allows for easy usage and customization.
- ALR11-5-17 and 11-8-17 models are compatible with the Euro Board.  
ALR18-7-18 and 18-10-18 models are compatible with the Mini ITX board.
- Possible to be used in a flat layout, or a standing layout.
- Knurled thumb screws for easy hand assembly.
- Custom size is available.

**Components**

No.	Part name	Pcs	Material	Color / Finish
1	Top - bottom cover	1 each	Aluminium A1100P	Silver anodized
2	W panel	2	Aluminium A1100P	Silver anodized
3	D panel	2	Aluminium A1100P	Silver anodized
4	Pillar	4	Extruded aluminium A6063S-T5	Silver anodized
5	Knurled thumb screw	8	Brass	Nickel plated
6	Rubber feet	4	Polyurethane	Transparent

ALR dimensions

■ DXF/DWG/PDF/STP drawings available on our website.



Product no. / Dimensions

Product no.	External dimensions			Available range (Internal)			t	Screw size	Compatible Board Size	Weight (g)
	W	H	D	w	h	d				
ALR10- 5-10	140	50	140	101	47	101	1.5	M3	—	274
ALR11- 5-17	163	45	223	101	41	161	2	M4	Euro Board (100 x 160)	653
ALR11- 8-17	163	75	223	101	71	161	2	M4		816.5
ALR18- 7-18	237	65	237	171	61	171	2	M4	Mini ITX (170 x 170)	1,004
ALR18-10-18	237	100	237	171	96	171	2	M4		1,225
ALR30- 7-20	362	70	264	296	66	196	2	M4	—	1,536

■ Similar transparent type design, as well as custom sizes are also available.



Skeleton acrylic case SKL series  
See page 111 ~ 114



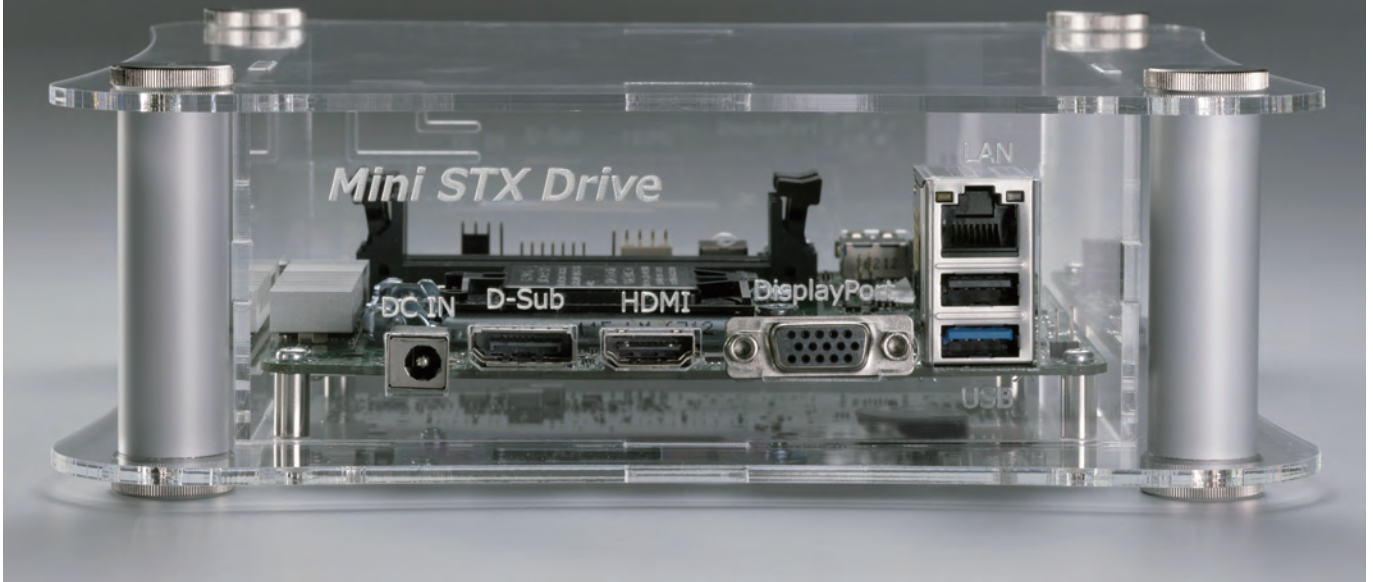
Custom sized skeleton acrylic case SKLF series  
See website



Custom sized arc design aluminium case ALRF series  
See website

# SHOW IT THROUGH SKELETON CASE

An elegant and sophisticated curved design acrylic case with stylish aluminium pillars at the corners. Perfect for exhibitions or demonstration events to both showcase the internals and provide a unique product visual appeal.



### Easy Assembly Curved Design Case



### Custom Sized Cases Available

Custom sized cases are available 50 ~ 500 width / length(depth) and 30 ~ 500 height in 1mm intervals. See SKLF series on our website for further details.



## CUSTOMIZATION POSSIBILITIES

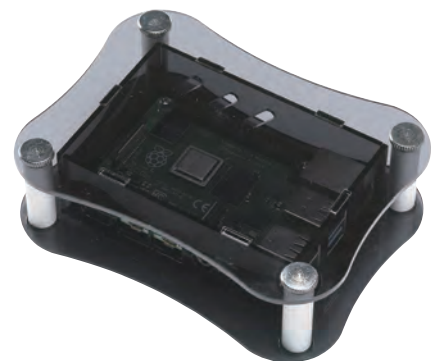
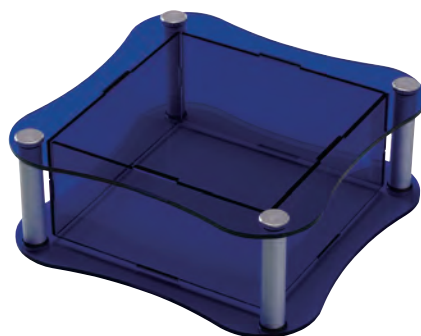
### Printing

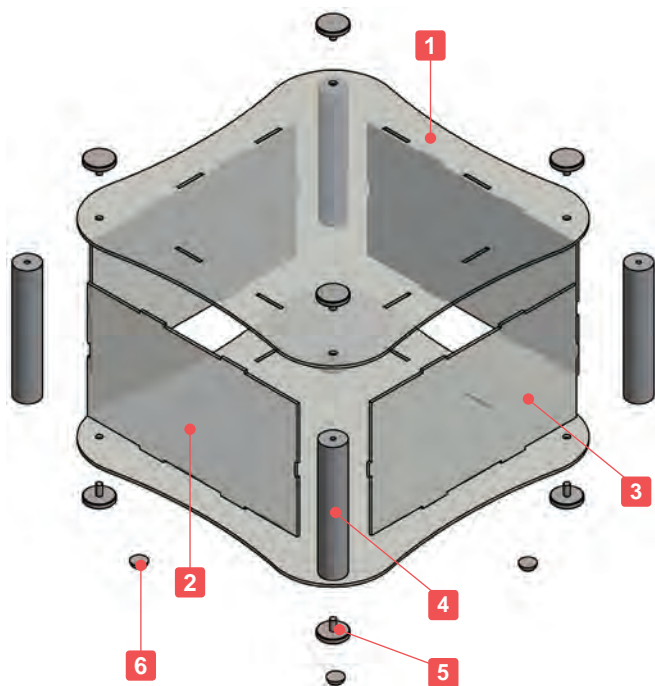
Print your logo, text and more using our customization services, such as inkjet printing.



### Color Variation

Available in different color types, as well as smoked / tinted shades.





- Curved transparent acrylic case with corner support columns.
- 5 different sizes are available.
- Usable as a display enclosure for a unique and luxurious outlook.
- SKL11-5-17 and 11-8-17 models are compatible with the Euro Board.  
SKL18-7-18 and 18-10-18 models are compatible with the Mini ITX board.
- Possible to be used in a flat layout, or a standing layout.
- Knurled thumb screws for easy hand assembly.
  
- Custom sized cases are available. See SKLF series on our website for further details.

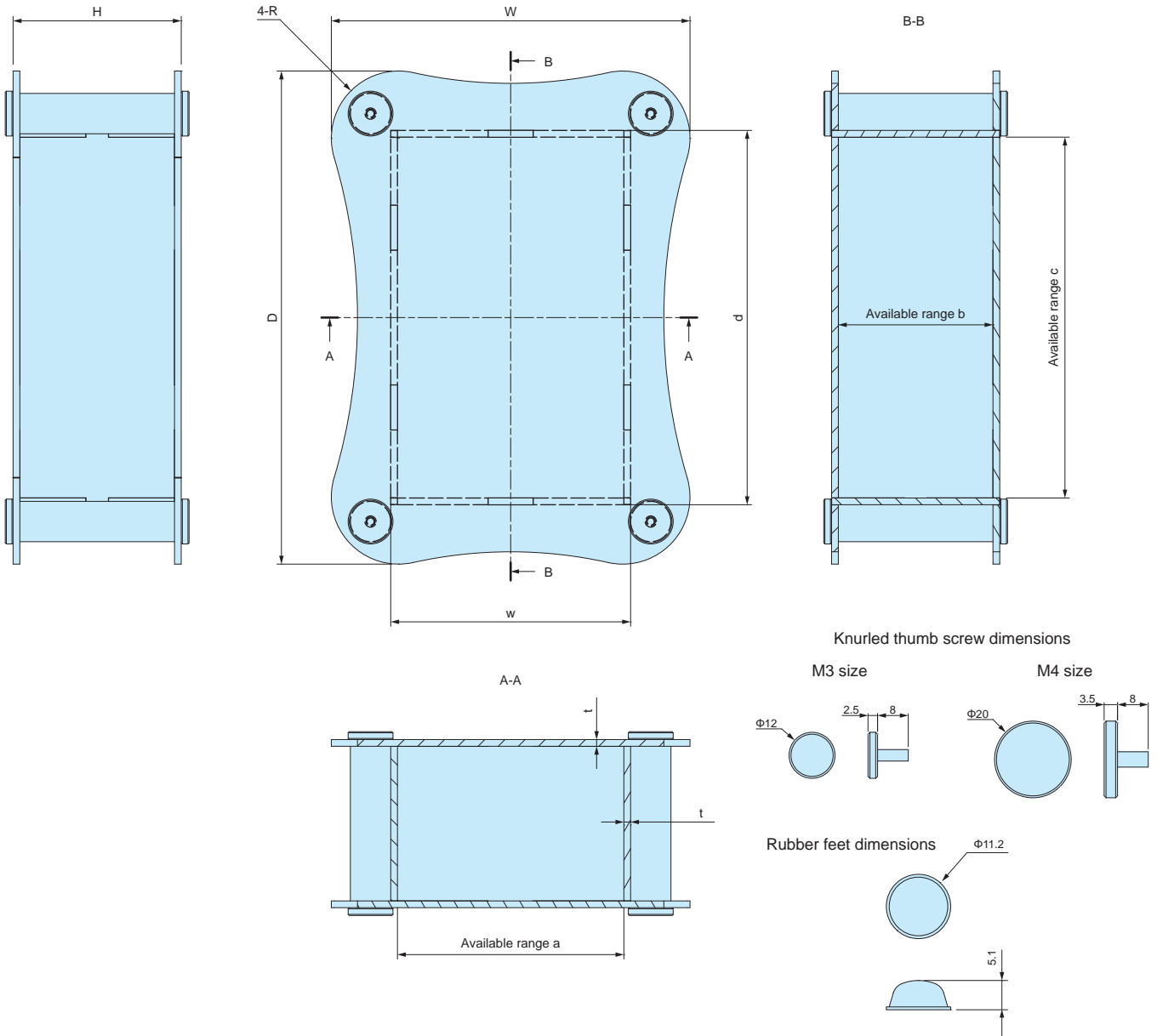
※Ethanol or other alcoholic solvents may cause the acrylic panel to crack. Use a neutral cleaner or specialized acrylic cleaning solvent for cleaning.

Components

No.	Part name	Pcs	Material	Color / Finish
1	Top - Bottom cover	1 each	Acrylic	Transparent
2	W panel	2	Acrylic	Transparent
3	D panel	2	Acrylic	Transparent
4	Pillar	4	Extruded aluminium A6063S-T5	Silver / Anodized
5	Knurled thumb screw	8	Brass	Nickel plated
6	Rubber feet	4	Polyurethane	Transparent

SKL dimensions

■ DXF/DWG/PDF/STP drawings available on our website.



Product no. / Dimensions

Product no.	External dimensions			Case dimensions		Available range			R	t	Screw size	Weight (g)
	W	H	D	w	d	a	b	c				
SKL10- 5-10	141	51	141	105	105	101	47	101	25	2	M3	191.5
SKL11- 5-17	165	47	225	107	167	101	41	161	25	3	M4	507
SKL11- 8-17	165	77	225	107	167	101	71	161	25	3	M4	643
SKL18- 7-18	239	67	239	177	177	171	61	171	40	3	M4	762
SKL18-10-18	239	102	239	177	177	171	96	171	40	3	M4	940.5

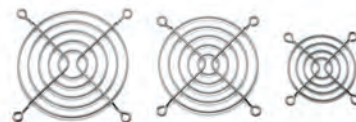
Accessories (Optional parts)



Adhesive standoff AST series  
See page 121

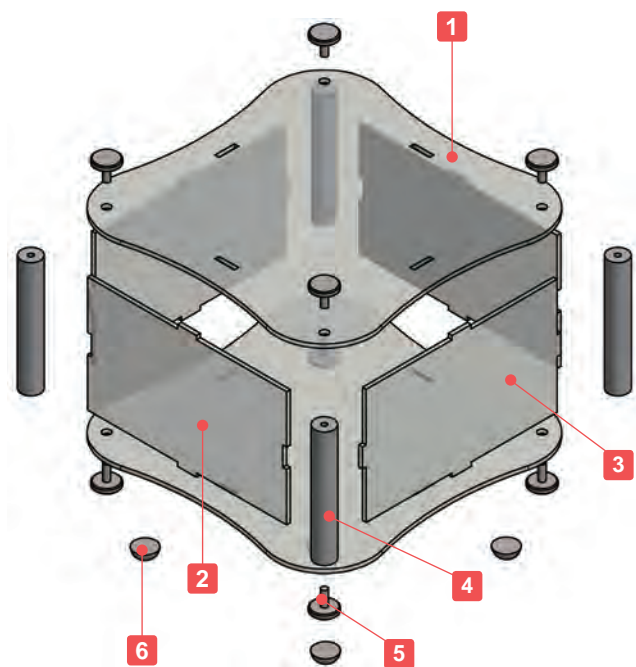


Cooling fan AGE • IGE series  
See website



Finger guard HF-G series  
See website





- Adjustable sizes available in 1mm intervals, with W and D dimensions from 50 ~ 500mm, and H dimensions from 30 ~ 500mm.
- Rubber feet can be provided if required in S (Φ11.2mm) or L (Φ15.7mm) sizes.
- Knurled thumb screws for easy hand assembly.

※Ethanol or other alcoholic solvents may cause the acrylic panel to crack. Use a neutral cleaner or specialized acrylic cleaning solvent for cleaning.

■ **Caution**

- On larger sized cases, the top cover may come loose if the middle part is held without support.



**Components**

No.	Part name	Pcs	Material	Color / Finish
1	Top · Bottom cover	1 each	Acrylic	Transparent
2	W panel	2	Acrylic	Transparent
3	D panel	2	Acrylic	Transparent
4	Pillar	4	Extruded aluminium A6063S-T5	Silver anodized
5	Knurled thumb screw	8	Brass	Nickel plated
6	Rubber feet	0 or 5	Polyurethane	Transparent



# SKLF Type Chart

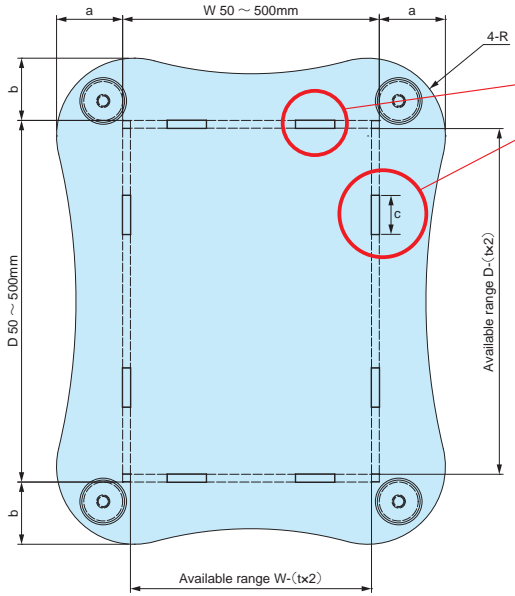
Refer to the below chart for S10 or S18 type selection by W & D dimensions.

**[S10] type : t = 2.0mm · M3 screw · Φ10.0 pillar**

**[S18] type : t = 3.0mm · M4 screw · Φ18.0 pillar**

W	H	D									
		50~100	101~150	151~200	201~250	251~300	301~350	351~400	401~450	451~500	
50~100	30~100										
	101~200										
	201~300										
	301~400										
	401~500										
101~150	30~100	[S10] type									
	101~200										
	201~300										
	301~400										
	401~500										
151~200	30~100										
	101~200										
	201~300										
	301~400										
	401~500										
201~250	30~100										
	101~200										
	201~300										
	301~400										
	401~500										
251~300	30~100										
	101~200										
	201~300										
	301~400										
	401~500										
301~350	30~100										
	101~200										
	201~300										
	301~400										
	401~500										
351~400	30~100										
	101~200										
	201~300										
	301~400										
	401~500										
401~450	30~100										
	101~200										
	201~300										
	301~400										
	401~500										
451~500	30~100										
	101~200										
	201~300										
	301~400										
	401~500										

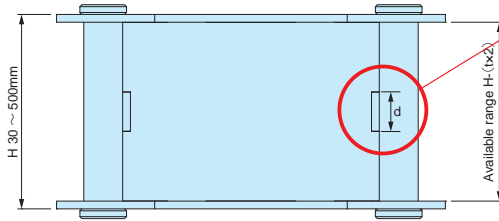
SKLF dimensions



Number of joints vary by specified W / D dimensions. Refer to the below chart for more information.

W dimension	Joints (one side)	D dimension	Joints (one side)
50~150	1	50~150	1
151~200	2	151~200	2
201~300	3	201~300	3
301~400	4	301~400	4
401~500	5	401~500	5

Joint c dimension = 20.0mm



Number of joints vary by specified H dimensions. Refer to the below chart for more information.

H dimension	Joint d dimension	Joints (one side)
30~100	10mm	1
101~200	20mm	1
201~300	20mm	2
301~400	20mm	3
401~500	20mm	4

D dimension \ W dimension	50~100			101~150			151~200			201~250			251~300		
	a	b	R	a	b	R	a	b	R	a	b	R	a	b	R
50~100	17	17	15	17	17	15	29	28	15	29	28	15	30	28	15
101~150	17	17	15	18	18	25	29	29	25	30	29	25	30	29	25
151~200	28	29	15	29	29	25	31	31	40	31	31	40	32	31	40
201~250	28	29	15	29	30	25	31	31	40	33	33	50	33	33	50
251~300	28	30	15	29	30	25	31	32	40	33	33	50	35	35	60
301~350	35	37	15	36	38	25	38	39	40	40	41	50	42	42	60
351~400	35	38	15	36	38	25	38	40	40	40	41	50	42	43	60
401~450	35	38	15	36	39	25	38	40	40	40	42	50	42	43	60
451~500	35	39	15	36	39	25	38	41	40	40	42	50	42	44	60

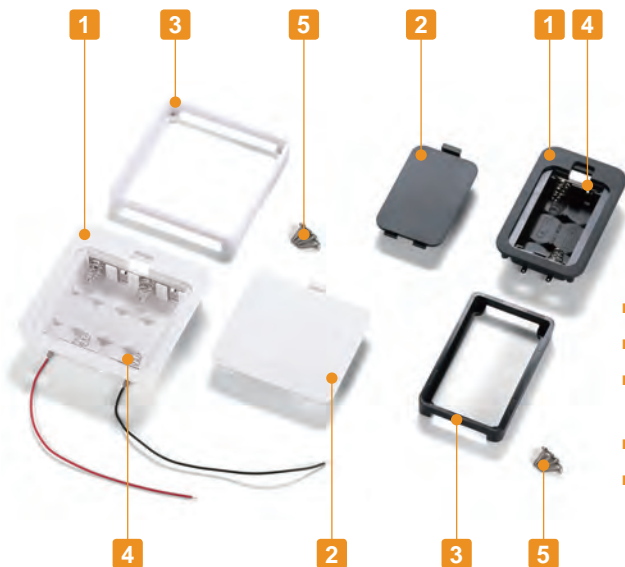
D dimension \ W dimension	301~350			351~400			401~450			451~500		
	a	b	R	a	b	R	a	b	R	a	b	R
50~100	37	35	15	38	35	15	38	35	15	39	35	15
101~150	38	36	25	38	36	25	39	36	25	39	36	25
151~200	39	38	40	40	38	40	40	38	40	41	38	40
201~250	41	40	50	41	40	50	42	40	50	42	40	50
251~300	42	42	60	43	42	60	43	42	60	44	42	60
301~350	44	44	70	44	44	70	45	44	70	45	44	70
351~400	44	44	70	46	46	80	46	46	80	47	46	80
401~450	44	45	70	46	46	80	48	48	90	48	48	90
451~500	44	45	70	46	47	80	48	48	90	50	50	100



Technical Data

Operating temperature: -10°C ~ +60°C

Mount Example



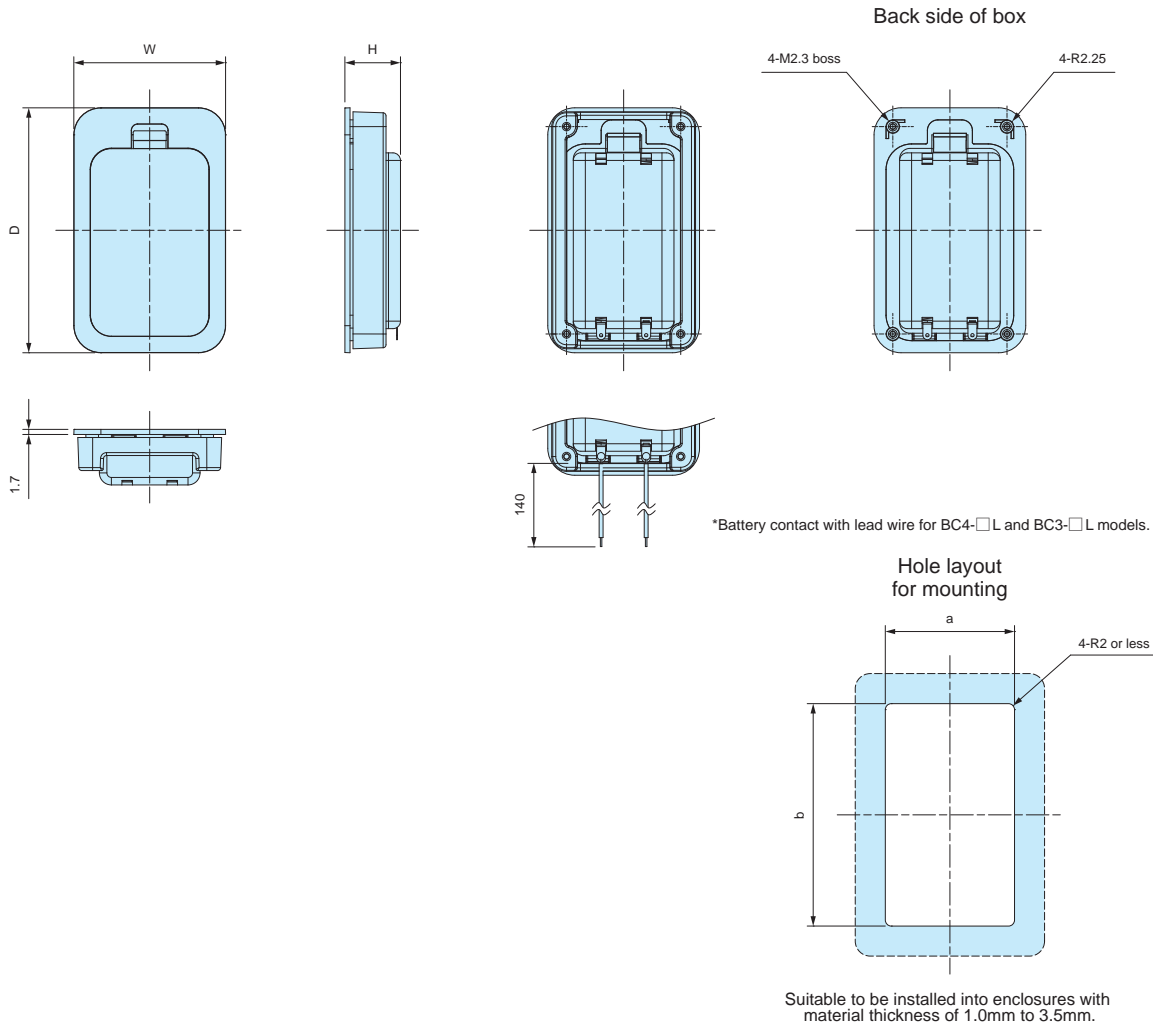
- Suitable to be installed into enclosures with material thickness of 1.0mm to 3.5mm.
- Cover can be opened/closed without any tool for easy battery replacement.
- 5 different battery layouts are available as AA x 2, AA x 3, AA x 4, AAA x 2 and AAA x4. Each layout comes in 2 models: with lead-wire, and without lead-wire.
- ⊕ ⊖ markings prevents incorrect placement of battery.
- The dimensions of alkaline or manganese batteries may vary depending on country and brand. Use optional battery cushion sponge to preventing rattling.

Components

No.	Part name	Pcs	Material	Color / Finish
1	Box	1	ABS UL94V-0	Black • Off-white
2	Cover	1	ABS UL94V-0	Black • Off-white
3	Frame	1	ABS UL94V-0	Black • Off-white
4	Battery contact Lead wire (BC-L models)	1 set	Battery contact : Brass & steel wire Lead wire : PVC + Copper wire (UL1007 AWG26)	Nickel plated Black • Red
5	Self-tapping screw	4	Steel	Nickel plated

**BC dimensions**

- DXF/DWG/PDF/STP drawings available on our website.
- The shape and position of battery contacts vary by models.



**Type: Without Lead Wire**

**Product no. / Dimensions**

Product no.		Dimensions					Battery layout	Weight (g)
● Black	● Off-white	W	H	D	a	b		
BC4-2-B	BC4-2-W	40	14.8	78.5	32.5	71	*AAA x 2	24.5
BC4-4-B	BC4-4-W	62	14.8	78.5	54.5	71	*AAA x 4	34.5
BC3-2-B	BC3-2-W	50.5	18.5	81.5	43	74	*AA x 2	31.5
BC3-3-B	BC3-3-W	65.5	18.5	81.5	58	74	*AA x 3	39
BC3-4-B	BC3-4-W	80.5	18.5	81.5	73	74	*AA x 4	46

\*Alkaline or manganese batteries

**Type: With Lead Wire**

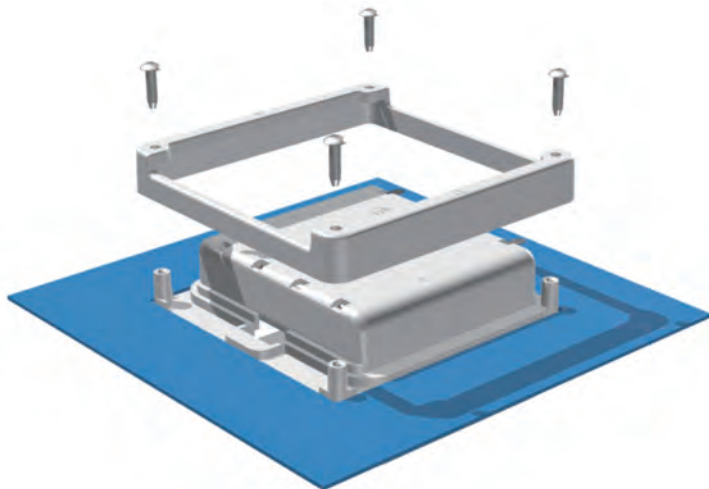
**Product no. / Dimensions**

Product no.		Dimensions					Battery layout	Weight (g)
● Black	● Off-white	W	H	D	a	b		
BC4-2L-B	BC4-2L-W	40	14.8	78.5	32.5	71	*AAA x 2	25.5
BC4-4L-B	BC4-4L-W	62	14.8	78.5	54.5	71	*AAA x 4	35.5
BC3-2L-B	BC3-2L-W	50.5	18.5	81.5	43	74	*AA x 2	32.5
BC3-3L-B	BC3-3L-W	65.5	18.5	81.5	58	74	*AA x 3	40
BC3-4L-B	BC3-4L-W	80.5	18.5	81.5	73	74	*AA x 4	47

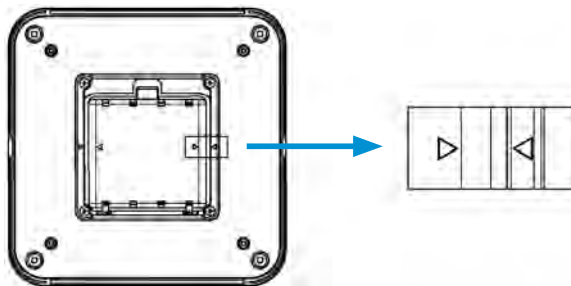
\*Alkaline or manganese batteries

# How to mount on the enclosures

■ Insert battery box into the milled hole first, and fit the frame on the back side. Once mounted, secure the frame with screws.



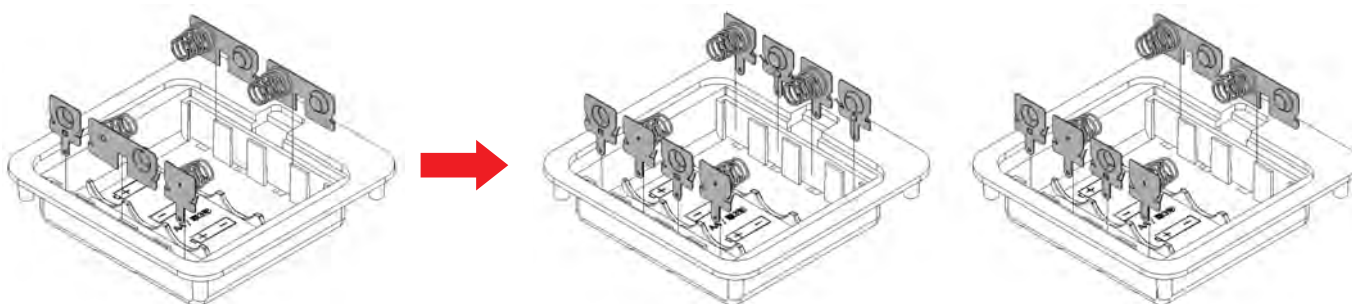
■ For BC3-4□ models, ▷ markings are shown on the frame. Install by matching the markings.



## Parallel circuit conversion on BC series battery box

- BC-3□ models can be converted from a series to a parallel circuit. See below illustration for further details.
- IT series (IT-3 models) optional battery contacts can be used for parallel circuit conversion. (See website for more information)
- Use caution when installing or replacing the terminals to avoid the damage to the material.
- Parallel series conversion is available via our customization services.

## Conversion Example

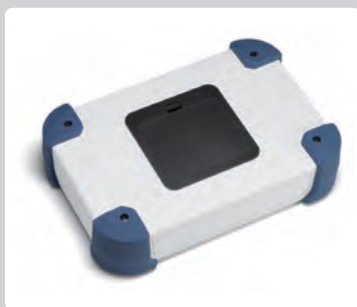


Series Circuit (Standard)

Parallel Circuit (4 batteries)

Parallel Circuit (2 batteries x 2)

### Customization Available



For more information, contact us here:

Online form: [https://www.takachi-enclosure.com/custom/form\\_custom](https://www.takachi-enclosure.com/custom/form_custom)  
 E-mail : [sales@takachi-el.co.jp](mailto:sales@takachi-el.co.jp)



# Mount Example



■ BC series battery boxes can also be mounted on aluminium enclosures.