



# 2025-2027 ENCLOSURE CATALOG NEW PRODUCT DIGEST

**Exciting 23,978 new products!**



**CASE BOX RACK & CUSTOM  
TAKACHI ELECTRONICS ENCLOSURE CO., LTD.**

# IP67 WEARABLE ENCLOSURE - SMW series

See our website

2 Sizes Available

A stylish design enclosure with wrist strap  
Perfect solution for wearable devices



**Stylish and luxurious mirror finish enclosure body**



Black Model



Off-white Model

IP67 (equivalent) protection

Water-repellent comfortable  
silicone wrist strap



For various wearable IoT devices

Environmental sensor



Access control system



GPS tracker



Emergency alert system



## IoT SMALL PLASTIC CASE - SIC series

[See our website](#)

19 Sizes Available



8 new sizes added for a total of 19 different sizes available for selection.

Small rounded plastic case ideal for use as IoT devices. Easy assembly snap-fit construction.

## WALL MOUNT IoT SMALL PLASTIC CASE - SIM series

14 Sizes Available

[See our website](#)



6 new sizes added for a total of 14 different sizes available for selection.

Easily attached to, or detached from the wall by using the wall mounting bracket.

## IP67 PORTABLE PLASTIC CASE - WC series

[See our website](#)

6 Sizes • 4 Battery Types Available



IP67 protection small plastic case with soft elastomer side grip for comfortable holding.

New CR2450/CR2477 battery compartment model added for a total of 4 different battery arrangements.



## IP68 DIECAST ALUMINIUM ENCLOSURE - DW series

4 Sizes Available

See our website



IP68 high performance aluminium diecast box protected from immersion as long as 24 hours at 1m depth.

Engineered for superior shielding capabilities by having the unfinished inner sides of the Top cover and Base, as well as the conductive silicone gasket.

## IP68 HEATSINK DIECAST ALUMINIUM ENCLOSURE - DWH series

4 Sizes Available

See our website



IP68 high performance and heat dissipation aluminium diecast box protected from immersion as long as 24 hours at 1m depth. Engineered for superior shielding capabilities by having the unfinished inner sides of the Top cover and Base, as well as the conductive silicone gasket.

## IP68 WATERPROOF ASA BOX - WG series

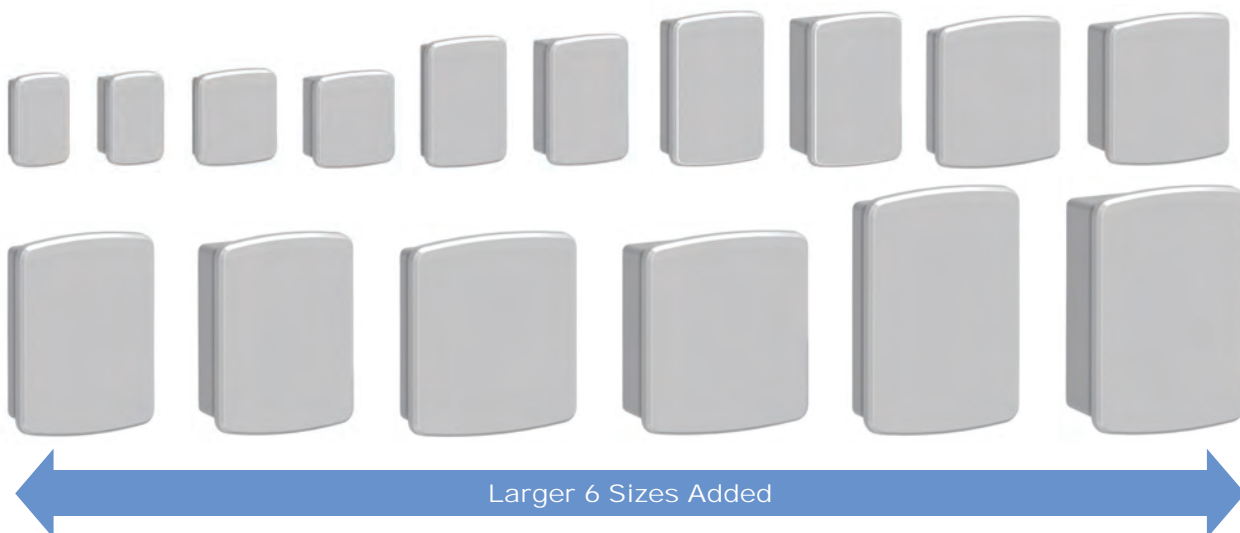
## IP68 WATERPROOF PC+ASA BOX - WGPC series



16 Sizes Available

See our website

IP68 high performance plastic box protected from immersion as long as 24 hours at 1m depth. ASA material of WG series is resistant to deterioration and discoloration from ultraviolet rays. PC/ASA material of WGPC series provides superior heat resistance and flame retardancy.



## IP68 POLYCARBONATE HINGED ENCLOSURE - UPC series

6 Sizes Available

See our website



IP68 high performance polycarbonate box that can withstand submersion to a depth of 2 meters for up to 24 hours. High durability achieved through material thickness and stainless steel latch. 2 new sizes added for a total of 6 different sizes available for selection.

## Raspberry Pi 5 HEATSINK CASE - RPH-5 series

[See our website](#)



Heatsink case exclusively for Raspberry Pi 5 in Desktop and Flanged wall mount models.

Equipped with highly efficient heat-sink top cover. Constructed using diecast aluminium for strength and rigidity. Flanged wall mount model is compatible with VESA mount standards (75 x 75mm / 100 x 100mm), and can be installed on the back side of PC displays, etc.

## DIN RAIL MOUNT Raspberry Pi 5 HEATSINK CASE - RPHD-5 series

[See our website](#)



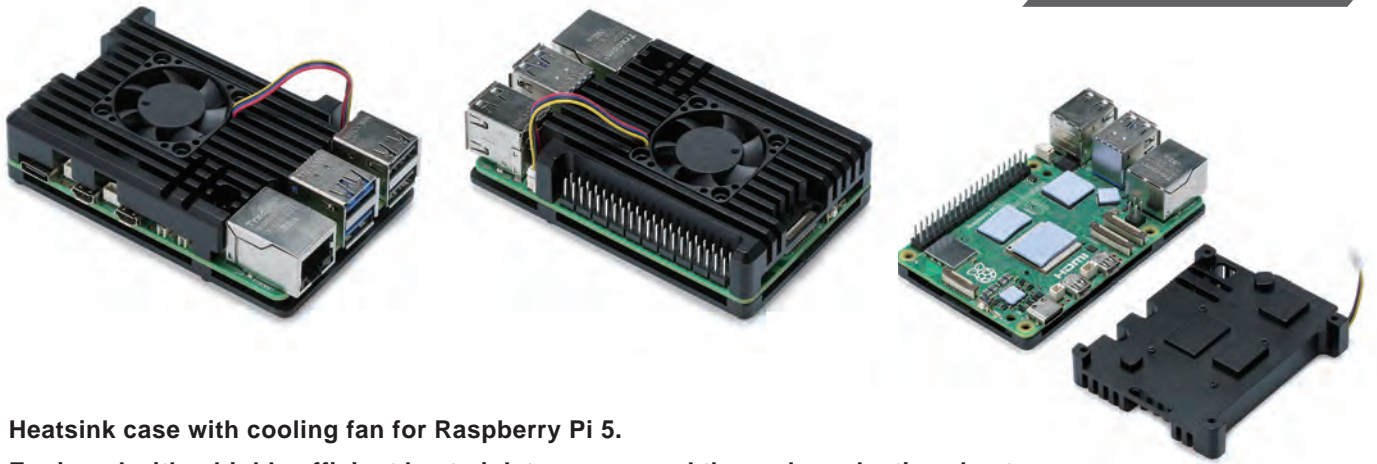
Heatsink DIN Rail mount case exclusively for use with the Raspberry Pi 5.

Equipped with highly efficient heat-sink top cover. Constructed using diecast aluminium for strength and rigidity. Easy mounting and dismounting from a DIN Rail with snap-in bracket.



## Raspberry Pi 5 HEATSINK CASE with COOLING FAN - RPF-5

[See our website](#)

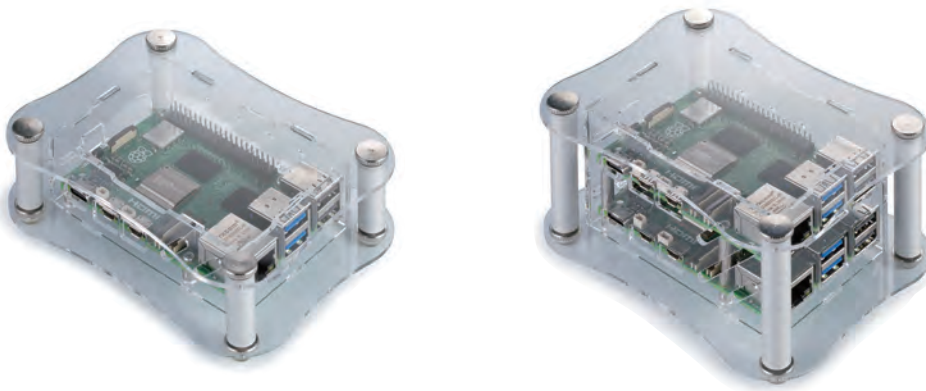


Heatsink case with cooling fan for Raspberry Pi 5.

Equipped with a highly efficient heat-sink top cover and thermal conductive sheets.

## Raspberry Pi 5 ACRYLIC CASE - RPA-5 series

[See our website](#)



Curved transparent acrylic case with corner support columns, exclusively for use with Raspberry Pi 5 models.  
Usable as a display enclosure for a unique and luxurious outlook.

## ROCK 5A/4C+ ALUMINIUM CASE - ROCK-5A

[See our website](#)



Aluminium case compatible with OKdo ROCK 5 Model A and ROCK 4 Model C+ single board computer.  
Curved arc designed aluminium case with corner support columns.  
Knurled thumb screw allows easy hand assembly.

## DIN RAIL BOX - DRC series

[See our website](#)

4 Sizes Available



Next generation designed plastic enclosure with mount bracket for 35mm DIN Rail.  
Suitable for network module, controller, data logger and more.

## DIN RAIL MOUNT ENCLOSURE - DRB series

[See our website](#)

6 Sizes Available



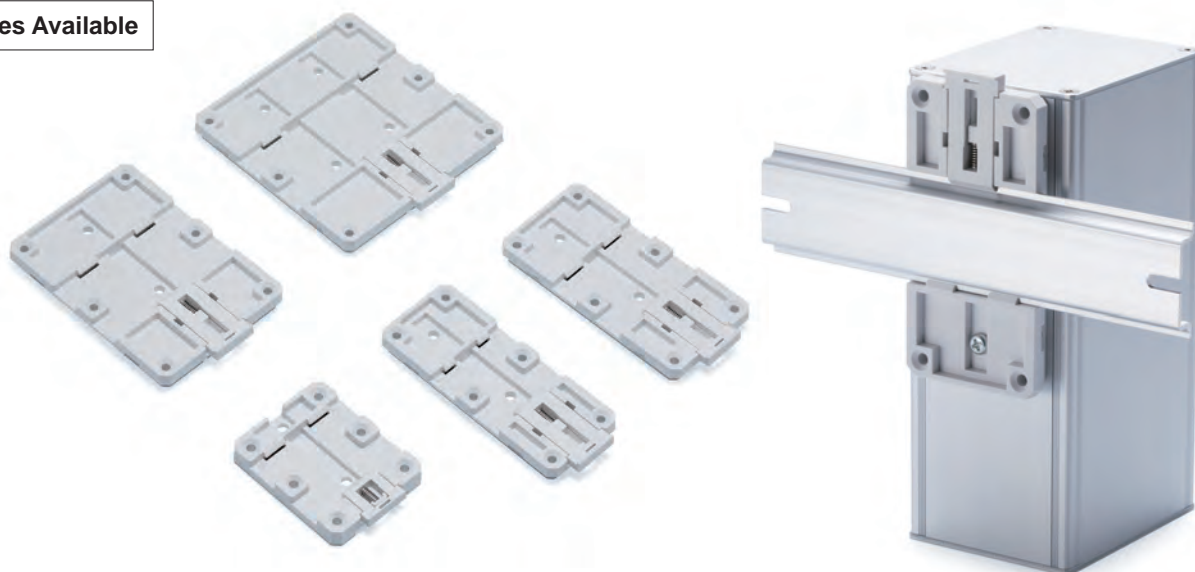
Aluminium enclosure with mount bracket for 35mm DIN Rail.  
Suitable to use as power supply, controller, and more.



## DIN RAIL MOUNTING BASE - DRP series

[See our website](#)

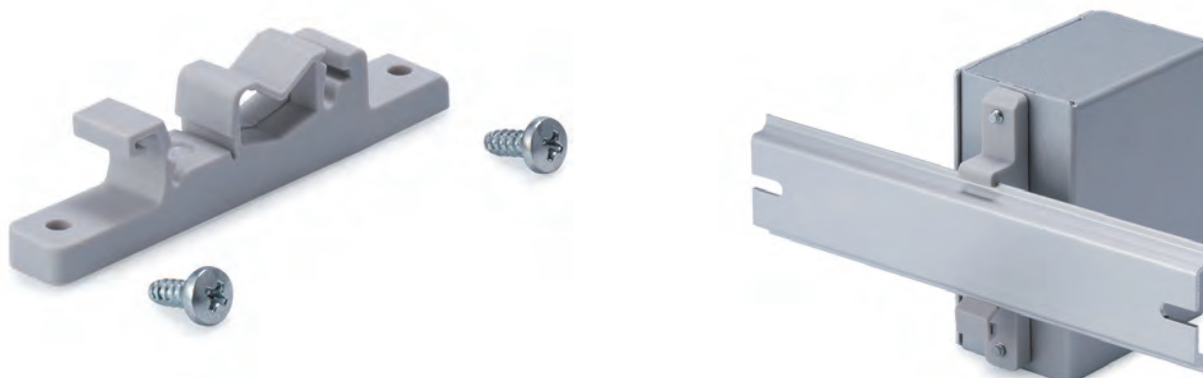
5 Sizes Available



Mounting base for installation of enclosures, PCB and other parts onto 35mm DIN Rail.  
Easy mounting and dismounting from a DIN Rail using the pull lever.

## DIN RAIL MOUNTING BRACKET - DRF series

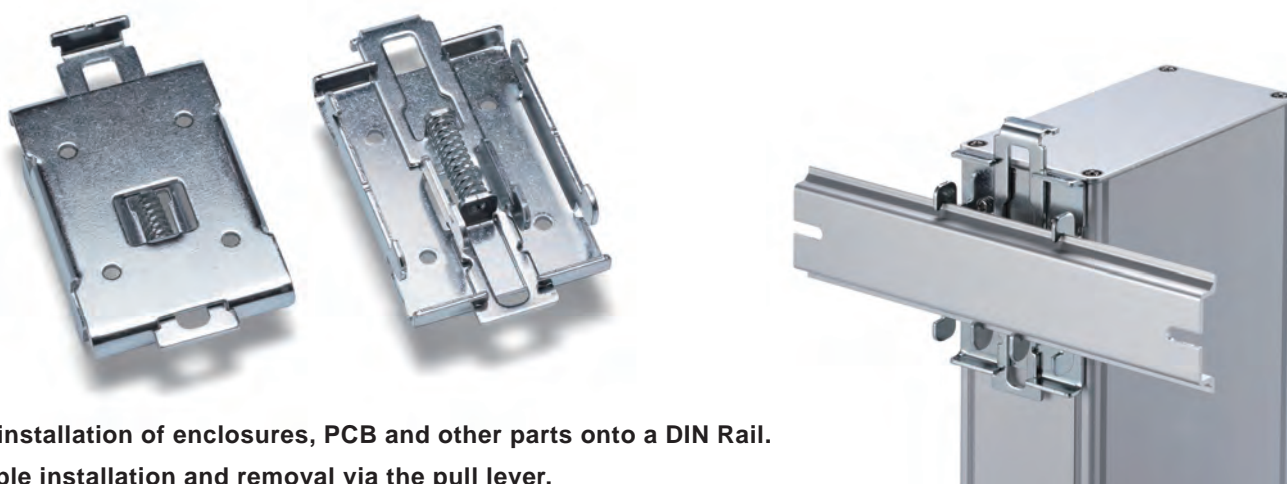
[See our website](#)



Mounting bracket for installation of enclosures, PCB and other parts onto 35mm DIN Rail. Can be easily detached.

## DIN RAIL MOUNT BRACKET - DRM-1

[See our website](#)



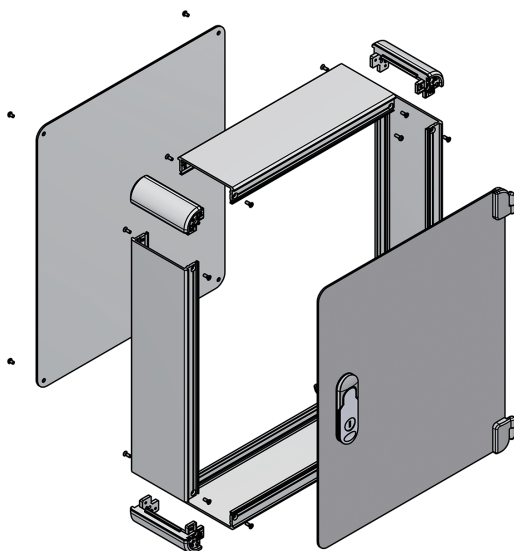
For installation of enclosures, PCB and other parts onto a DIN Rail.  
Simple installation and removal via the pull lever.

**Hinged cover control box version and rack mount case version are added on NEXT GENERATION Aluminium Case AU series.**

## **ALUMINIUM CONTROL BOX - AUH series**

**See our website**

252 Sizes Available



Suitable for use as industrial control panel, machine controller, audio amplifier, power supply, and more.

## NEXT GENERATION 19" Rack Case

[See our website](#)



## 19" RACK MOUNT ENCLOSURE - AUR series

[See our website](#)

35 Sizes Available

19" rack mount enclosure with insertion type front/rear panels, giving it a beautiful appearance.



## 19" RACK MOUNT ENCLOSURE WITH DETACHABLE PANELS - AUPR series

[See our website](#)

28 Sizes Available

19" rack mount enclosure with detachable panels. Available with variant EMC shielded type - AUPRE series.



## 19" RACK MOUNT ENCLOSURE - AUXR series

[See our website](#)

35 Sizes Available

Flat and rugged design 19" rack mount enclosure with 4 extruded aluminium frames. Available with variant EMC shielded type - AUXRE series.





## NEXT GENERATION Aluminium Case

**The perfect unity of flexibility, versatility and appearance!**

### ALUMINIUM ENCLOSURE - AU series

[See our website](#)

430 Sizes Available



### ALUMINIUM ENCLOSURE - AUP series

[See our website](#)

387 Sizes Available

Available with variant EMC shielded type - AUPE series.

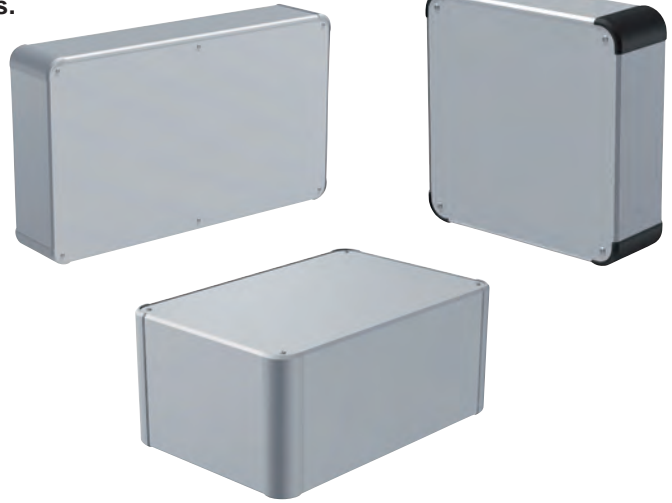


## ALUMINIUM CONTROL BOX - AUX series

[See our website](#)

270 Sizes Available

Available with variant EMC shielded type - AUXE series.



## ALUMINIUM ENCLOSURE with CORNER GUARD - AUG series

430 Sizes Available

[See our website](#)

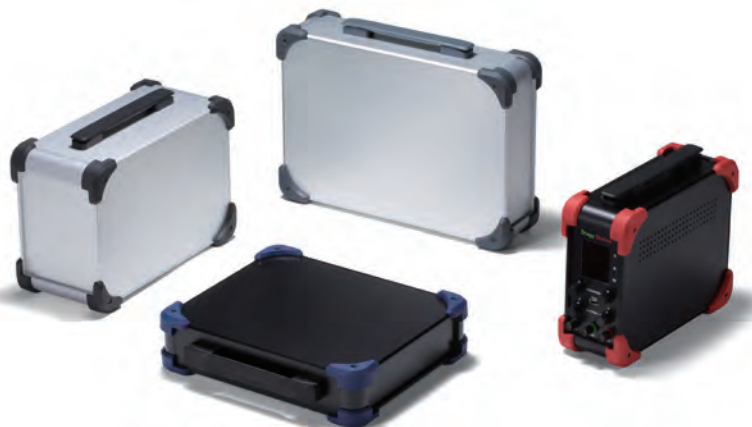
Available with total 384 sizes of variant EMC shielded type - AUGE series.



## PORTABLE INSTRUMENT CASE with HANDLE - AUGH series

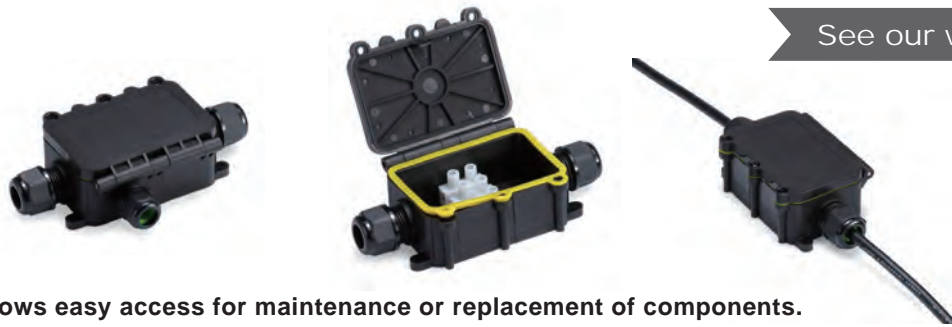
294 Sizes Available

[See our website](#)



## IP68 HINGED TERMINAL BLOCK JUNCTION BOX - JW series

6 Sizes Available



See our website

Hinged structure allows easy access for maintenance or replacement of components.

2, 3 and 4 way types are available.

## IP68 UL CERTIFIED SNAP-LOCK SCREWLESS CONNECTOR - THS389 series

See our website



Straight type THS389 series



Panel-mount type THS389E series

IP68 Plug-socket connector which consists of the plug side (male) and socket side (female).

4P and 5P pole models are available.

## STRAIN RELIEF CABLE GLAND - RSP series

See our website

7 Sizes Available



Protecting cables by preventing it from bending beyond its limit and breaking.

Economical price but high waterproofing capability equivalent to IP67. A total of 14 models available for selection.

## RUBBER STRAIN RELIEF CORD PROTECTOR - CBS series

8 Sizes Available

See our website



Strain relief cord protector helps relieve flex stress and prevents damage to cables.

A total of 8 different sizes available for selection.



## MULTI-HOLE CABLE GLAND - RMH series

[See our website](#)

5 Sizes Available



Multi-hole cable gland with equivalent to IP65 protection class.

Available Thread size / Mounting hole : M12 - M32 /  $\Phi$  1.5mm - 11mm

## RIGHT ANGLED CABLE GLAND - REL series

[See our website](#)

7 Sizes Available



L-shaped cable gland with M type threads which allows wires to be routed vertically.

## IP67 SPLIT INSERT CABLE GLAND - RSC series

[See our website](#)

4 Sizes Available



Split type sealing insert can protect cables with connector. IP65 protection class.

## LOW COST IP67 METAL CABLE GLAND - RMC series

[See our website](#)

10 Sizes Available



Economical metal cable gland. Equivalent to IP67 protection class.

## WATERPROOF TOP LOADER CASE - NK-T series

[See our website](#)

2 Sizes Available



**Robust and stylish IP65 waterproof carrying case in a top loader type design.**  
**Large carrying handle for easy transportation and for outdoor use.**

## EVA SHELL CASE - SC series

[See our website](#)

4 Sizes Available



**Economical zipper type soft carrying case with handle.**  
**Selectable in 4 different sizes, with each model available with, and without internal foam.**  
**Pre-cubed sponge foam allows for a stronger protection of the stored equipment.**  
**Suitable for storing delicate devices such as measuring instruments, medical equipments, tools, precision parts, and more.**