



**TAKACHI ELECTRONICS ENCLOSURE CO., LTD.**

3-21-16 Higashi-ryoke, Kawaguchi-shi, Saitama, 332-0003 JAPAN

Tel. +81-48-222-5409 / Fax. +81-48-222-7652

February 19, 2021

## **NOTICE**

### **CR2 · CR123A Series Battery Holder Mold Renewal and Design Change**

■ Affected series / models

Series / Product Number	Current Inventory Status
CR2-PC	5,000 pcs
CR2-R	1,200 pcs
CR123A-PC	1,200 pcs
CR123A-R	5,900 pcs

※Inventory depletion rate will vary for each model based on incoming orders

■ Change : Mold renewal and design change

**Current Mold Design**

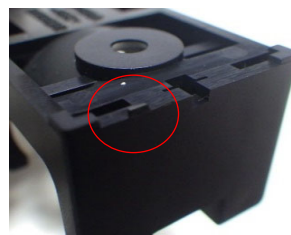


Injection Molding Gate on the side

**New Mold Design**



Addition of holes/gaps at 4 corners



Injection Molding Gate on the bottom

**Current Design : Made in Japan**

**New Design : Made in China**

- **Functionality:** No changes to functionality, size or dimensions, color, finish, material, or lead wire.
- **Purpose:** To ensure consistent quality throughout via streamlined supply chain and materials.
- **Period:** Once current inventory has been depleted.  
\*possibility of mixed batch (current & new design) delivery.
- **Series / Model:** No changes to Series, Product number, or pricing.

Thank you for your understanding.

For more information, kindly contact us at: [sales@takachi-el.co.jp](mailto:sales@takachi-el.co.jp)