

NOTICE

Changes to Screw Head Type

■ Affected series / models : See below chart.

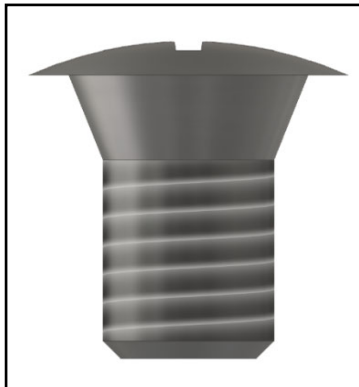
Product Name	Series	Note
SLOPED ENCLOSURE	CF Series	
ALUMINIUM CONTROL BOX	CH Series	
ALUMINUM CONTROL BOX	FC Series	
CONTROL BOX with CARRYING HANDLE	FCH Series	
MOUNTING BRACKET	FCK-K Series	
CUSTOM SIZED ALUMINIUM CONTROL BOX	FCS Series	
HEATSINK ALUMINUM ENCLOSURE	HY Series	
HEATSINK RACK MOUNTING ENCLOSURE	HYR Series	
HEATSINK RACK MOUNT ENCLOSURE with HANDLE	HYRH Series	
ALUMINIUM PROFILE ENCLOSURE - CUSTOM LENGTH	KCF Series	Applicable if D = 304mm or more

■ Changes : Screw Head Type

Current (Old) Screw

Type : Slotted raised countersunk, Phillips Head (+)

Size : M3-5



New Screw

Type : Binding, Phillips Head (+)

Size : M3-5



- Purpose: To ensure consistent quality throughout via streamlined supply chain and materials.
- Effective date : Once present inventory has run out / been depleted.
- Note 1: No changes to product's dimensions and surface finish.
- Note 2: No changes to screw size, material and surface finish.
- Note 3: No changes to recommended tightening torque.
- Note 4: No changes to item product number or pricing.

Thank you for your understanding.
For more information, kindly contact us at: sales@takachi-el.co.jp