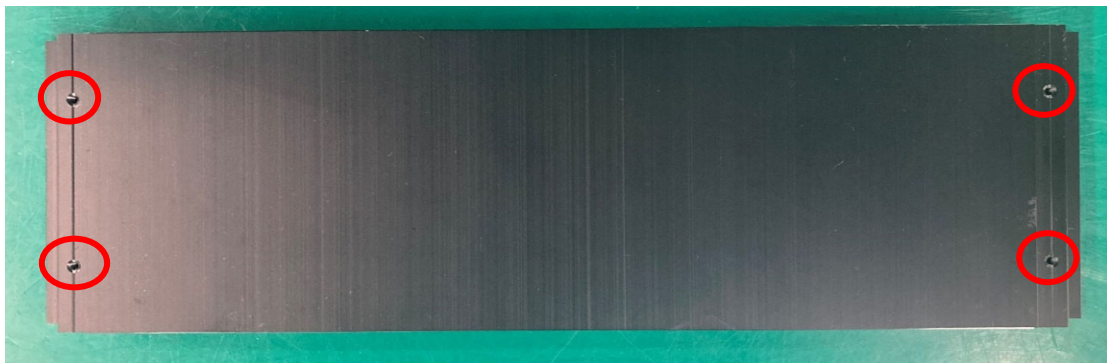


NOTICE

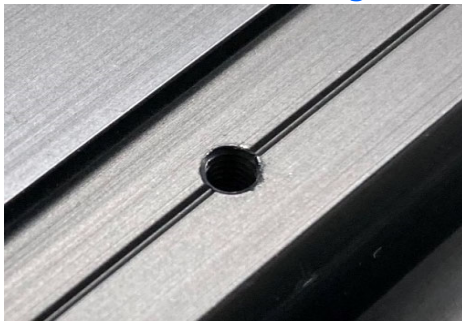
HY, HYR and HYRH Series

Changes to Hole Design on Heat-Sink Side Plate

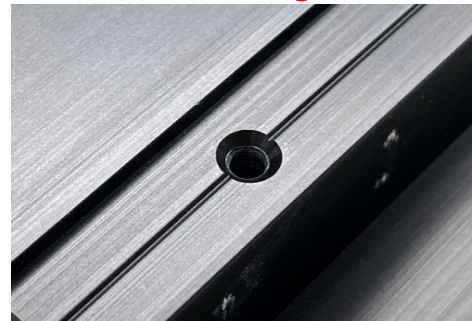
- Affected series / models : HY, HYR, and HYRH Series
- Changes : Hole Design (circled in red below) on Heat-Sink Side Plate



Current (Old) Design



New Design



※New hole shape is slightly tapered.

- Purpose: To ensure consistent quality throughout via streamlined supply chain and materials.
- Effective date : Once present inventory has run out / been depleted.
 - ※ Parts may be mixed and shipped in the same batch order as it does not affect usage functionality.
- Note 1: No changes to product's dimensions and surface finish.
- Note 2: No changes to item product number or pricing.

Thank you for your understanding.
For more information, kindly contact us at: sales@takachi-el.co.jp