

*Raspberry Pi Board is not included.

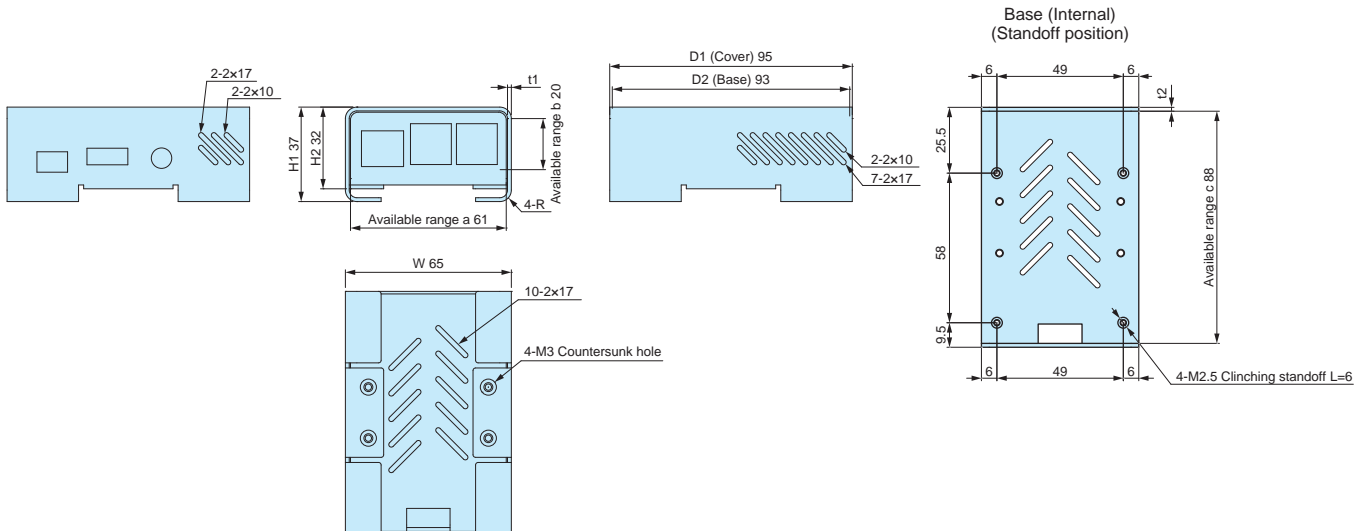
- Exclusively for use with Raspberry Pi.
Compatible with Raspberry Pi 2 and 3 boards.
- All aluminium, polished and elegant metallic silver finish.

Components

No.	Part name	Pcs	Material	Color / Finish
1	Cover	1	Aluminium	Metallic Silver / Painted
2	Base	1	Aluminium	Metallic Silver / Painted
3	Screw (M3-4 Flat-head)	4	Steel	Trivalent chromate
4	Screw for Board (M2.5-3)	4	Brass	Nickel plated
5	Rubber feet	4	Rubber	Black
6	Clinching standoff	4	Steel	Trivalent chromate

RPI dimensions

■ DXF/DWG/PDF drawings available on our website.



Product no. / Dimensions

Available range "a" x "c" = compatible board size

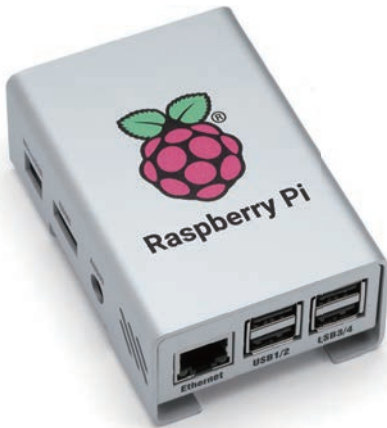
Product no.	W	H1	H2	D1	D2	R	t1	t2	a	b	c	Weight (g)
RPI-1	65	37	32	95	93	4.5	1.5	1.5	61	20	88	88.9

Raspberry Pi Case Customization

Create your very own unique **Raspberry Pi** Case!

Original Logo (Inkjet print, Engraving)

Inkjet printing services are available from just 1 piece, with low initial cost.



Size Adjustment

Custom size adjustments are possible to fit your unique PCB.



Shape Adjustment

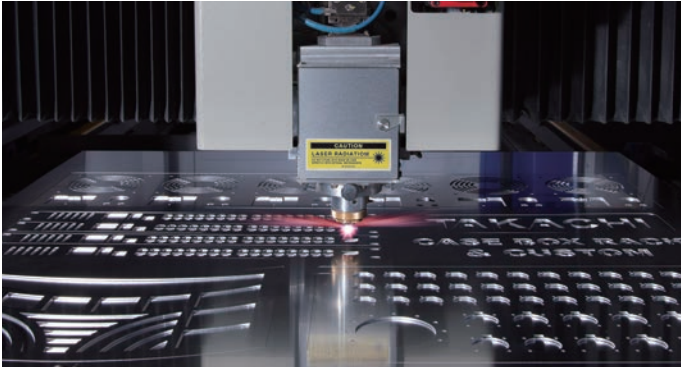
Custom shape adjustments are possible for wall and pole mounts, and so on.



Color Anodizing / Painting



Customization order is possible from just 1 piece.



High speed machining is possible with our fiber laser cutting machine.

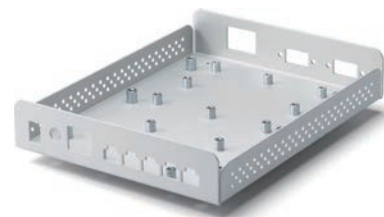


High speed CNC machine allows for a variety of milling services. Recesses, taper shapes, letter engravings which cannot be achieved by punching press or laser cutting, are available.



Inkjet printing utilizes a vector data file* instead of a physical print board, hence it has a significantly lower initial cost. It is also cost efficient for both small and medium batch quantities. Additionally, prints with multiple colors, color gradation and such can be printed with picture-like clarity.

**Vector data: Artwork/Graphic data in AI/EPS/PDF format originally created by Adobe Illustrator or similar software.*



A wide variety of standoffs, studs and fasteners are available for selection, with a low lead-time requirement. Aluminium stud welding can be performed without the need for hole milling.

www.takachi-enclosure.com

TAKACHI ELECTRONICS ENCLOSURE CO., LTD
3-21-16 Higashi-ryoke, Kawaguchi, Saitama
332-0003, JAPAN

Tel. +81-48-222-5409
sales@takachi-el.co.jp

● All products are EU RoHS 6 compatible.